

# RUTHERFORD AVENUE / SULLIVAN SQUARE RECONSTRUCTION PROJECT

*What does it mean for us?*

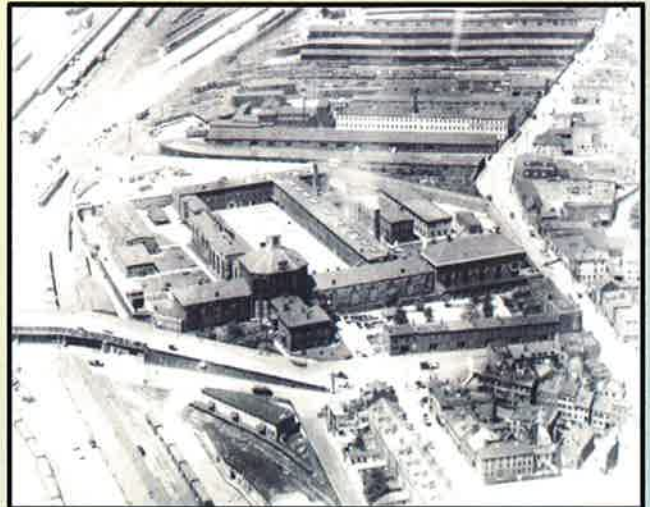


For more information contact:  
Gerald Robbins, 617-241-7717, [gmrobbins@yahoo.com](mailto:gmrobbins@yahoo.com)

## **Background**

- Plan created by Charlestown community from 2008 – 2010
- BTDC and consultants provided technical support
- RCIC are residents seeking to make neighborhood better
- We'll talk about common goals, review current proposal, discuss how to get involved

Charlestown State Prison



Sullivan Square Fountain



City Square Elevated Station





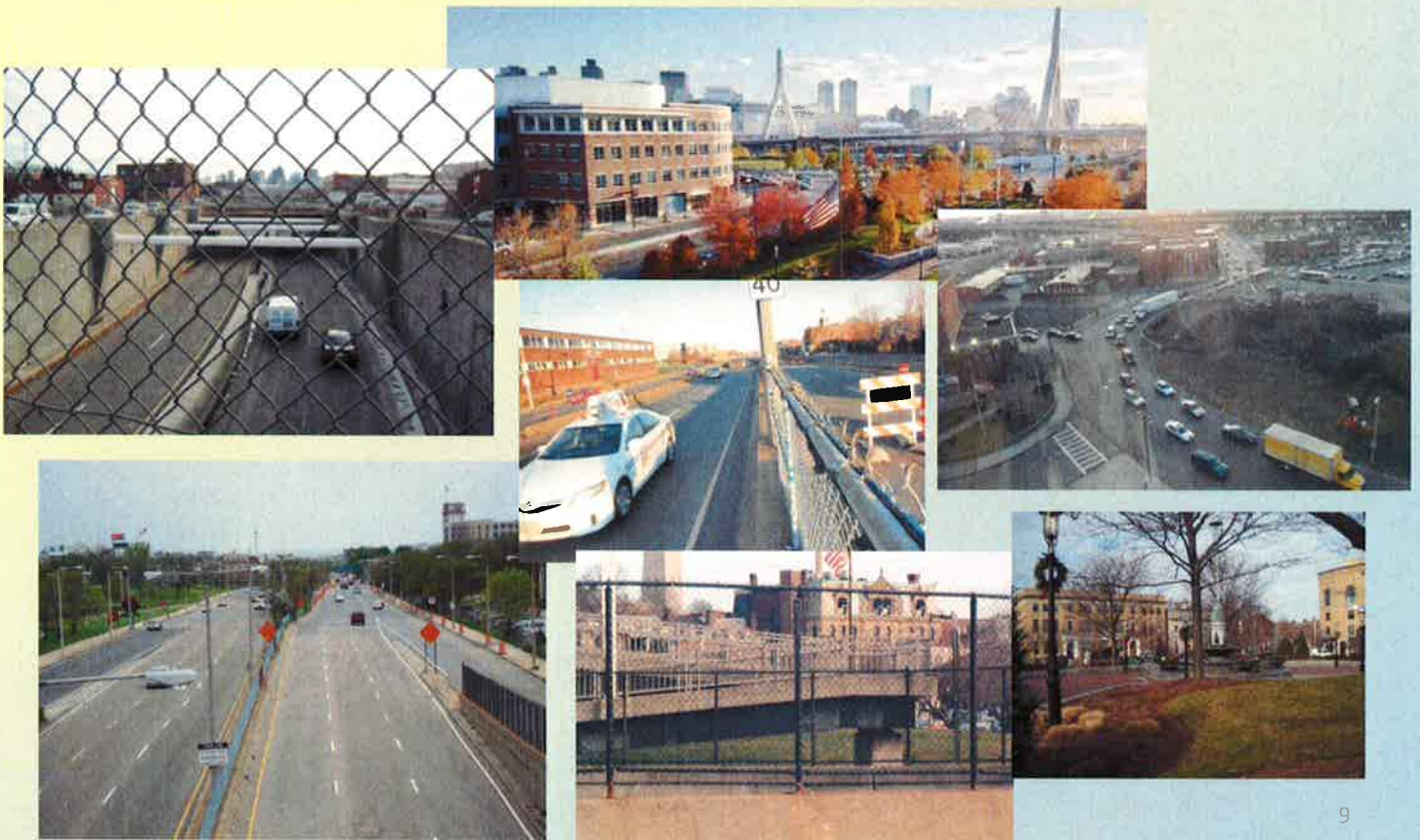


Main Street with EI , late 1960s

Main Street, today



# WHAT IS WORKING / NOT WORKING TODAY?



## **IMPROVEMENTS UNDER CONSIDERATION**

### **BTD Project Goals**

1. Create balanced streets
2. Enhance community connections
3. Improve pedestrian and bicycle environment
4. Create flexible framework for desirable redevelopment
5. Create attractive public open spaces
6. Establish community gateways
7. Ensure public/private coordination



## Project Area

Sullivan Square

Austin Street/BHCC

City Square



## Rutherford Avenue Design

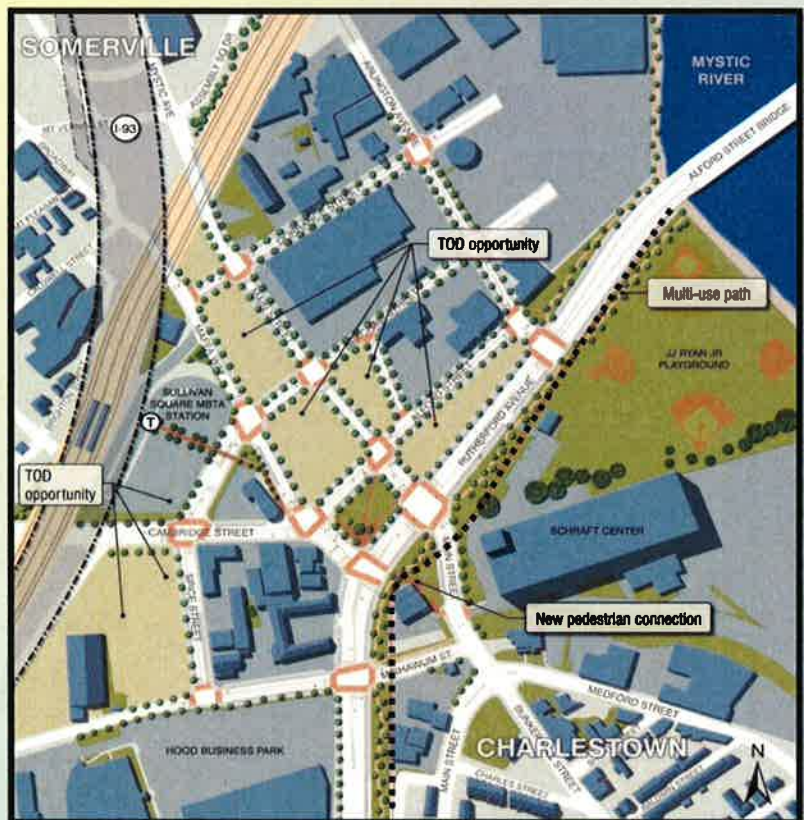
- Reduce number of lanes
- Create 5+ acre parks on neighborhood side
- Create safe places to cross street
- Add parking throughout area
- Less noise and dirt, and better overall air quality





## Sullivan Square Design

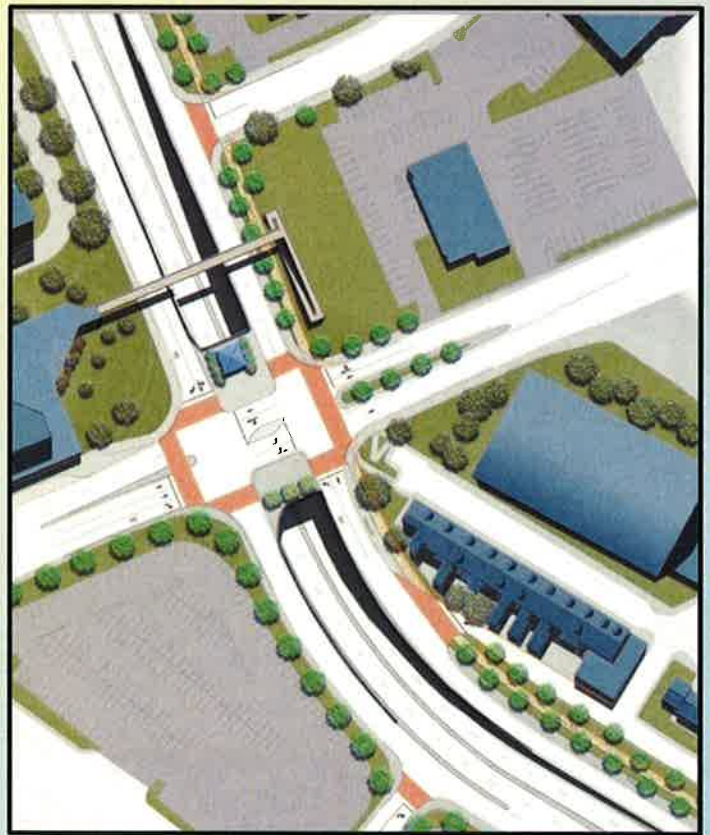
- Create city blocks: more options = less congestion
- Create parks
- Safer to walk and bike to Sullivan Square Station



## Austin Street Design



**Surface Option**



**Underpass Option**



# BOTH OPTIONS

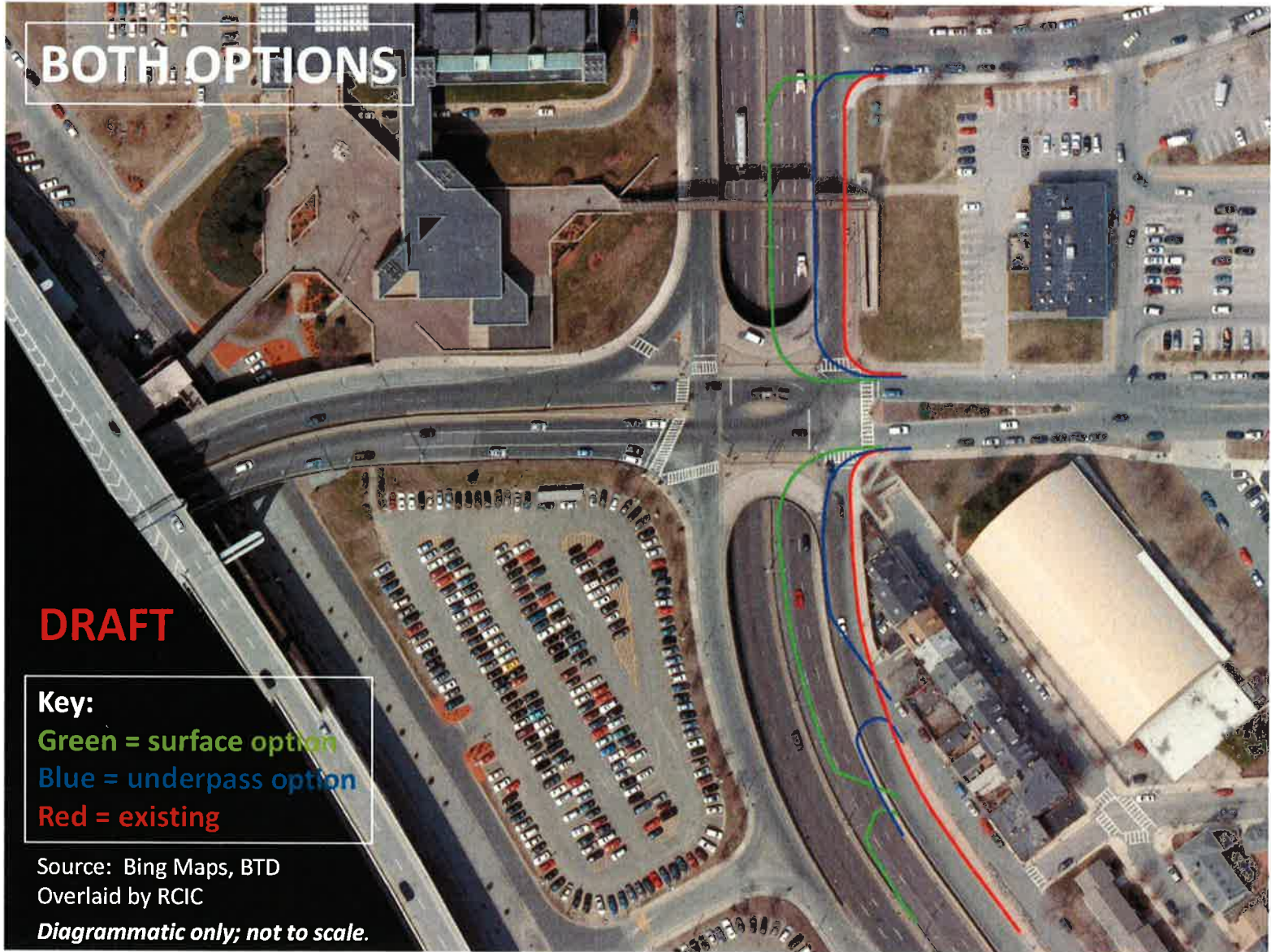
**DRAFT**

## Key:

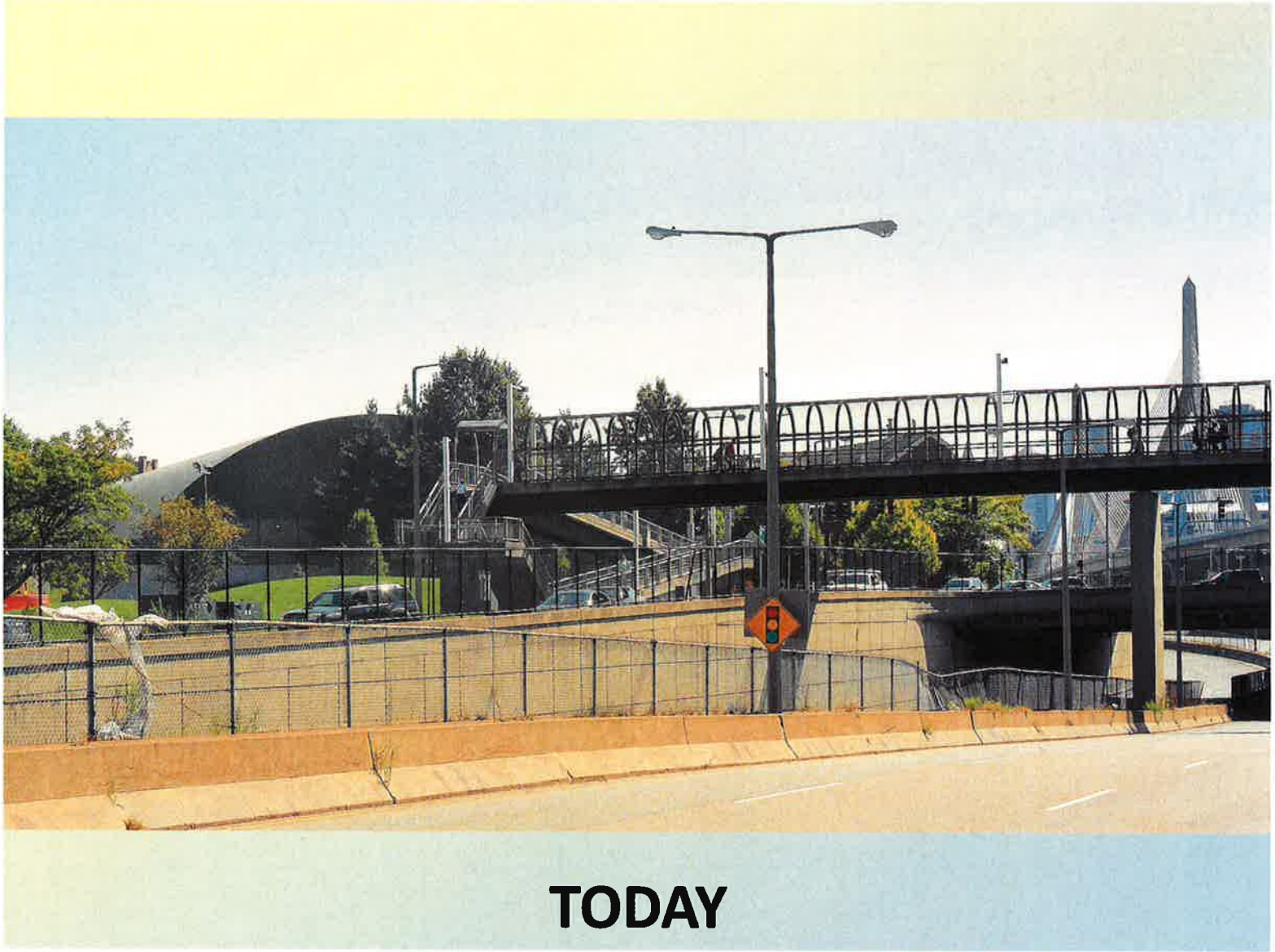
Green = surface option  
Blue = underpass option  
Red = existing

Source: Bing Maps, BTD  
Overlaid by RCIC

*Diagrammatic only; not to scale.*









**TOMORROW?**

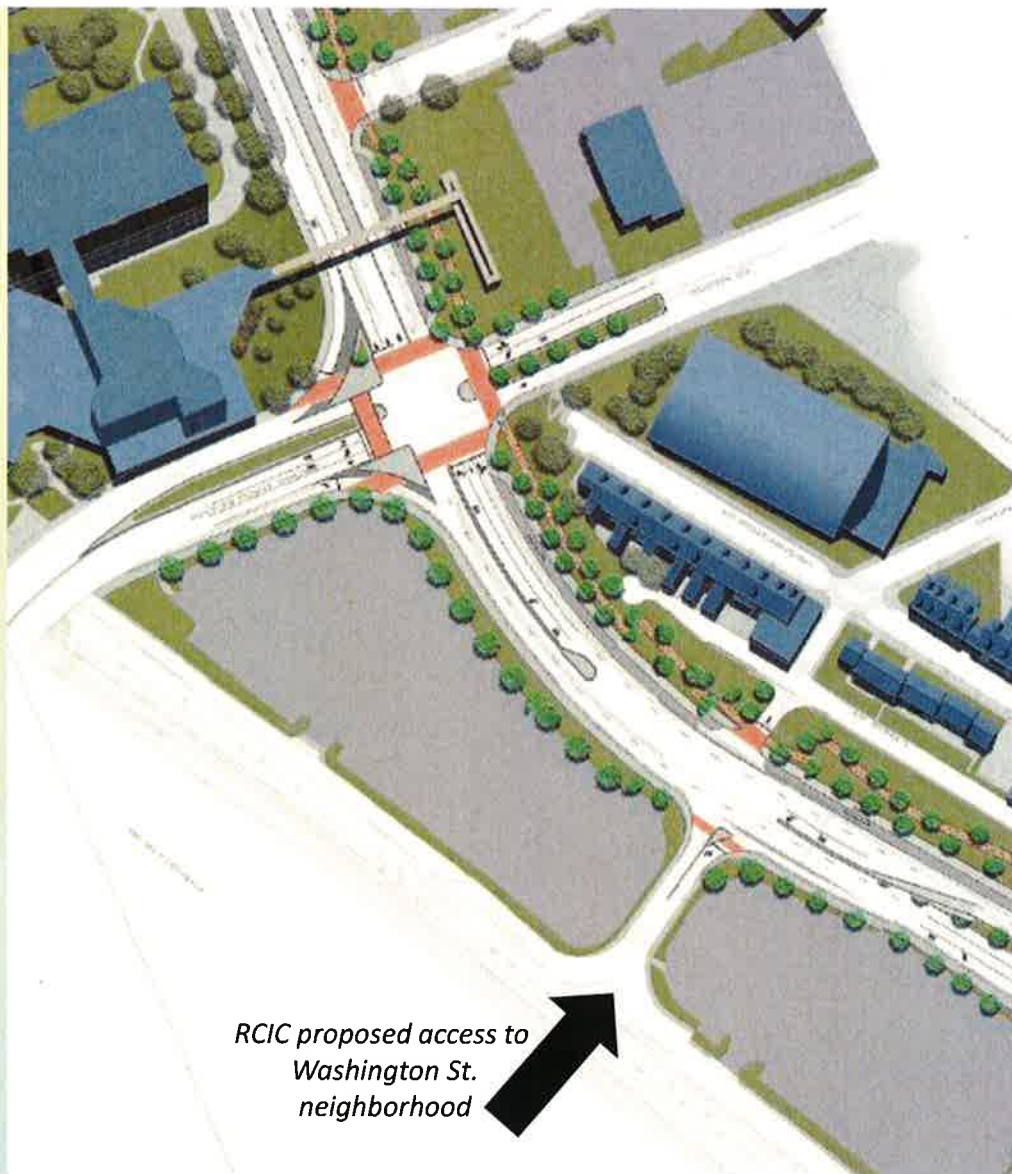
# Alternate Alignment at Union Street

(prepared by RCIC)

**DRAFT**

Source: BTD  
Modified by RCIC

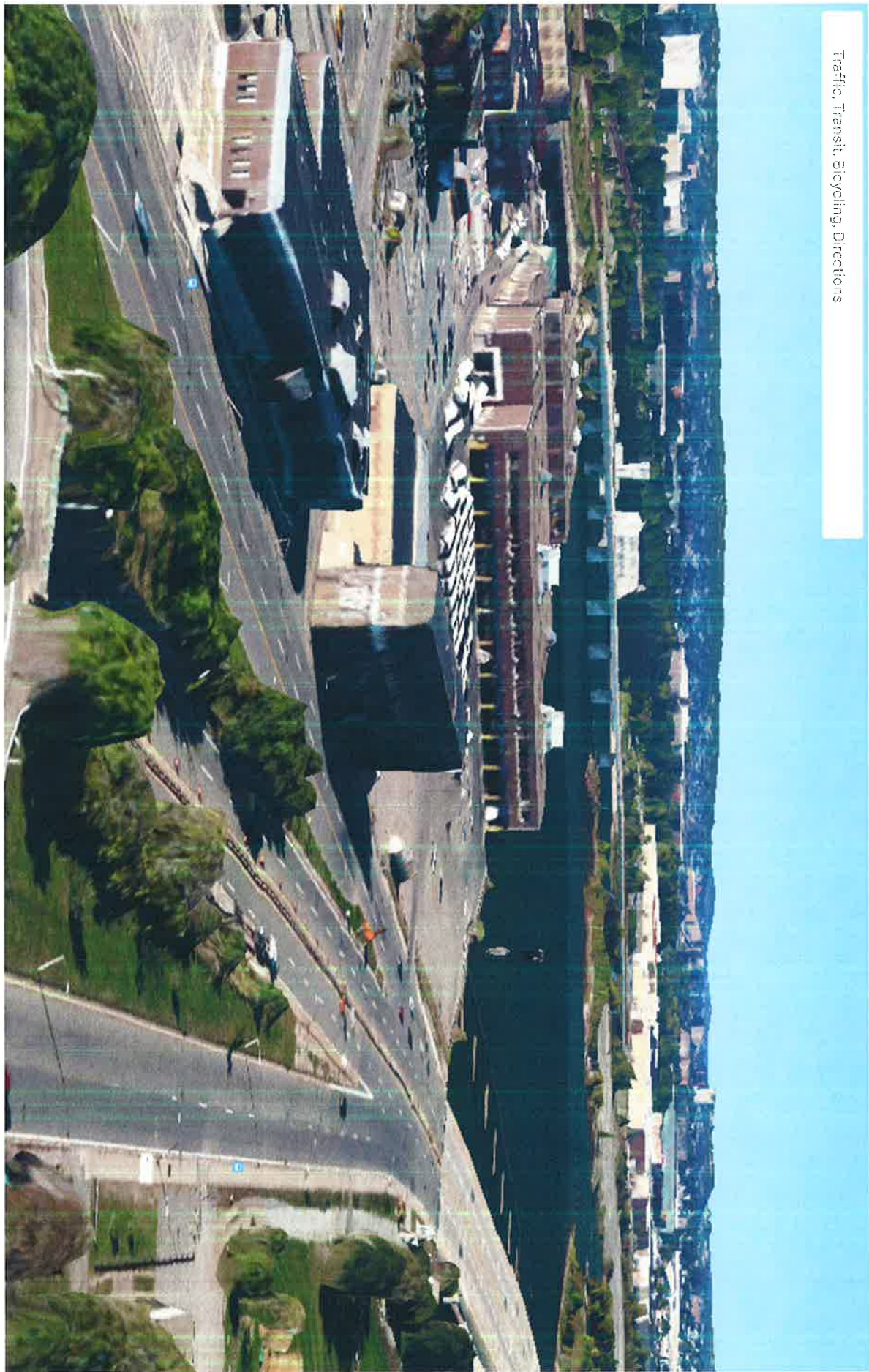
*Diagrammatic only; not to scale.*





8/20 measuring

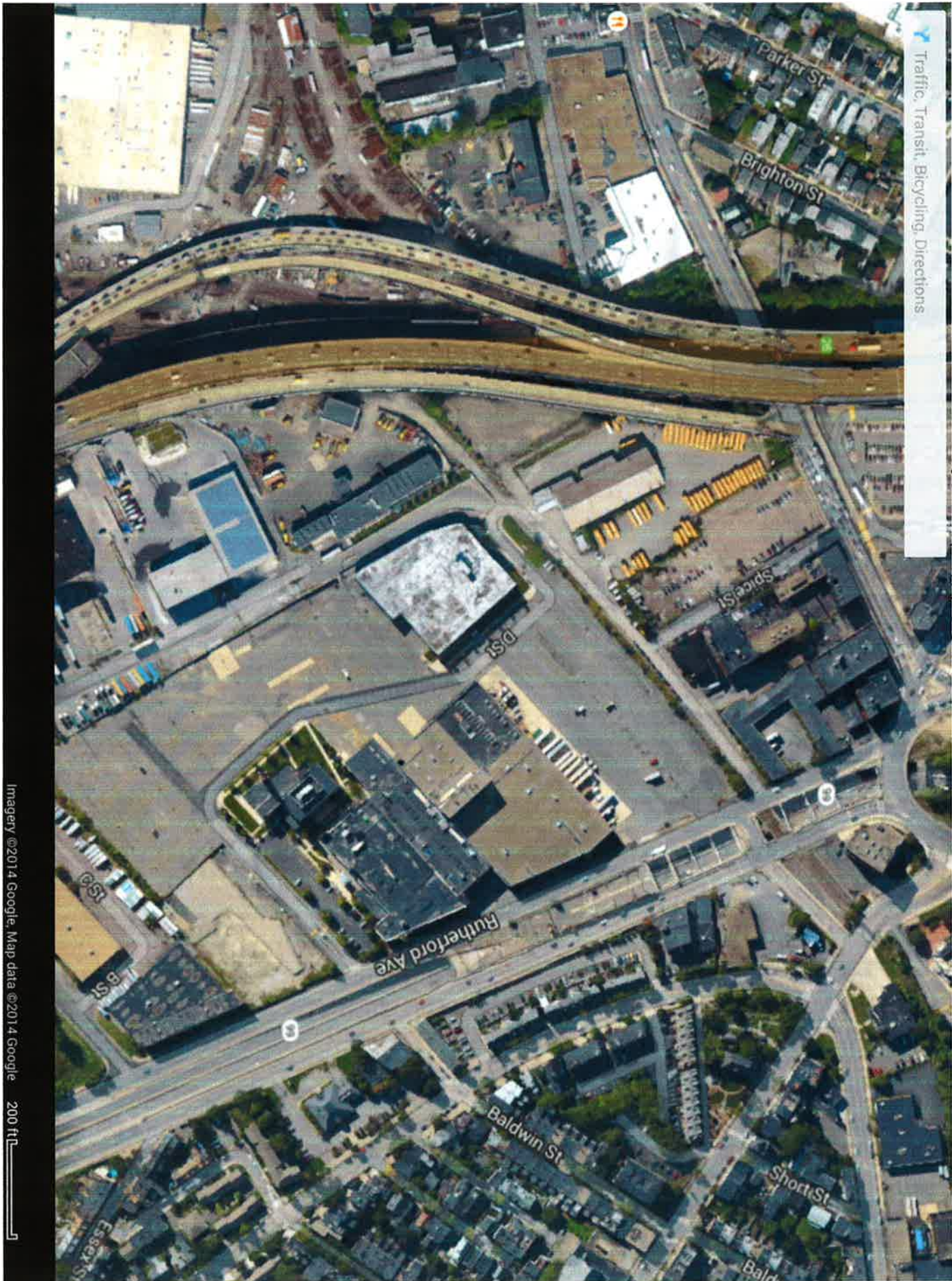
<https://www.google.com/maps/@42.3819009,-71.0736123,47a,20y,83.68t/data=!3m1!1e3>





Southern Hill Rotasold

8/20 meeting





$$* \#_1, -\#_2 \& \#_1' \#_1), -\#_1, 2) \#_1' 1.0$$


Source: Howard/Stein-Hudson Associates, Inc., 2011.

Existing from 2023 build includes all-incremental number  
Liz had at meetings