



**MassGaming Access and Opportunity Committee Meeting
NOTICE OF MEETING AND AGENDA**

Pursuant to the Massachusetts Open Meeting Law, G.L. c. 30A, §§ 18-25, notice is hereby given of a meeting of the Massachusetts Gaming Commission Access and Opportunity Committee. The meeting will take place:

Tuesday, October 9, 2018 | 2 PM – 4 PM
Springfield Technical Community College
1 Armory Street- Building 2, Room 703
Springfield, MA 01105

1. **Call to Order/Opening Remarks (2:00pm)**

Jill Lacey Griffin, Director; Workforce, Supplier and Diversity Development at MGC

2. **Approval of Minutes from September 11, 2018 (2:05pm) - Committee**

3. **REPORT: Encore Boston Harbor Design/Construction Activity (2:05 - 2:30pm)**

Jennie Peterson, Director of Employment;
Shelley Webster, Diversity Consultant

- Labor Outcomes to Date
- Contractor Outcomes to Date
- Upcoming Construction Activity

Followed by committee member questions/discussion and community input. (2:30 – 2:35pm)

----- **BREAK (2:35 – 2:45pm)** -----

4. **REPORT: MGM Springfield Final Design/Construction Activity (2:45 – 3:40pm)**

Chelan Brown, Diversity Specialist, Construction & Operations;
Jason Rosewell, Executive Director of Design and Construction;
Brian Packer, Vice President of Construction and Development

- Labor Outcomes to Date
- Contractor Outcomes to Date
- Upcoming Construction Activity

Followed by committee member remarks and community input. (3:40 -3:50pm)

5. **Closing Remarks (3:50 – 4:00pm)**

Commissioner Bruce Stebbins, MGC

Next Meeting: November 13, 2018 | 10 AM | Massachusetts Gaming Commission, 101 Federal Street, Boston



Massachusetts Gaming Commission

101 Federal Street, 12th Floor, Boston, Massachusetts 02110 | TEL 617.979.8400 | FAX 617.725.0258 | www.massgaming.com



Access and Opportunity Committee Meeting Minutes

Date/Time: September 11, 2018, 10:05 a.m. – 11:23 a.m.

Place: IBEW 103
256 Freeport Street
Dorchester, MA 02122

Committee Members Present:

Jill Lacey Griffin
Crystal Howard
Bruce Stebbins
Nader Acevedo
Andrew DeAngelo
Emily Earll

Priscilla Flint-Banks
Kim Hokanson
Susan Moir
Jennie Peterson
Liz Skidmore

A list of all committee members is available to the public by request.

Call to Order

10:05 a.m. Chair, Jill Griffin, called to order the Access and Opportunity Committee Meeting.

Approval of Minutes

10:13 a.m. The committee approved the minutes from August 22, 2018, with edits, based on suggestions from Liz Skidmore.

REPORT: Encore Design/Construction Activity – Jennie Peterson, Director of Employment; Shelley Webster, Diversity Consultant for In Order Business Solutions

10:22 a.m. Ms. Peterson opened the presentation stating that as of the end of August, \$14.5 million in design contracts had been awarded to diverse firms, totaling 23.6%. That totaled 13 MBE's, 15 WBE's and 4 VBE's.

Ms. Peterson explained that many of these diverse-owned contracts are direct consultants to Wynn Design and Development. The largest subcontractors are Jacobs Consulting which is performing well with MBE and VBEs but are struggling with WBEs. They are currently partnering to help a small WBE grow and working diligently to increase performance. She stated that another major design subcontractor struggling with meeting compliance is on the interior side and that Encore is working on carrying some existing WBEs from CA and/or Vegas

forward to assist with that goal. Wynn Design is unique in that it is a lot of work in house and some of the contracts carry forward. However, these agencies are certified by the three entities approved by the commission for diverse-owned certification.

10:28 a.m. For construction contracts, Ms. Peterson stated that new businesses in August resulted in two new awards for WBE's. With the project beginning to tail off, there will not be many opportunities for new contracts to be awarded, so this was an exciting addition for Encore. WBE's have 154 contracts to date (11.4%), VBE's have 48 contracts (2.6%), and MBE's have 78 contracts (6%). All of Encore's construction contracts are exceeding the goal.

10:31 a.m. Ms. Peterson gave a workforce update for Encore, stating that 3,800,959 hours had been performed to date by 5,805 workers. Of those, 1,338 were minorities, 357 were women and 265 were veterans. Encore's goal for minorities is 15.3% and they are currently at 24.9%. She was excited to report that the women's workforce number, which had previously been trailing, is finally back at 6.9. The goal for veterans on the project is 3% and Encore is reporting they are at 6.2% overall.

10:33 a.m. Encore's outreach efforts continue. August's efforts included a union opportunity event held in conjunction with City Academy and Suffolk, as well as Locals 4 and 25. Encore also had a table at Northeastern's Supplier Diversity Networking event. In addition, they are still accepting walk-on applications and continue to circulate information to unions for walk-on opportunities. Ms. Peterson reminded everyone that Lan-Tel was officially rewarded for their performance regarding diversity initiatives. They have a 13.1% veteran hiring rate on the project to date, and also meet the goals for women and minorities. She stated that for subcontractors to meet and exceed goals in all three categories is extremely challenging.

10:37 a.m. In discussing corrective action updates, Ms. Peterson stated that about 3 months ago, Encore decided not just to distribute emails and make phone calls, but to have a formal meeting, bringing to the table the subcontractors needing to get into compliance. A direct result of those meetings is hitting the female target. She noted that these meetings are not just focused on women, but specifically minority hiring too. She stated that interestingly they find the two go hand in hand. There are very few subcontractors meeting the female hiring goal that are not meeting the minority 15.3 % hiring goal. Two contractors currently on weekly meetings until achieving compliance are Century Drywall and Coughlin. Ms. Peterson stated they're constantly encouraging the subs to exceed all goals, which is the emphasis of the rewards and recognition program.

Ms. Peterson stated that the winners of the diversity awards get a certificate, framed and signed. They get a formal letter that detail exactly what they've done and who was involved. They receive four \$200 dining gift cards for their team and they're entered into an annual drawing for all expenses paid trip to Wynn Vegas. They also host a pizza luncheon for the entire work crew of the winning subcontractor.

Ms. Peterson said that ongoing challenges include Otis elevator, the cement masons (who had zero women for month of August and have only 2% to date.) She noted that the carpenters have made a significant improvement for August, but Encore is still working with them to make improvements overall. By reaching 7.8% workforce on the project for women in the month of August, they can now put even more emphasis on increasing the minority compliance. Overall they've seen outstanding response to corrective action meetings.

10:52 a.m. Susan Moir commended Encore for having 9 contracts already hitting the "20% by 2020" Build a Life program goal well before 2020. She also indicated that two other subcontractors were only slightly under that goal at 19%+. Ms. Moir encouraged Ms. Peterson to consider those contractors when additional awards cycles come up. She also stated that Encore has clearly demonstrated that the face to face is the best practice, being more impactful than emails and calls, which is important for the committee to note.

10:57 a.m. Encore presented some rough data regarding weekend overtime and diversity in the workforce, which did show weekend crews being less diverse. Ms. Peterson stated that they compiled the data via turnstile numbers to see how the crews were doing, and admitted although they're not completely accurate, it's a good picture. Emily Earll noted they were still working on the LCD tracker data as well, but that it takes a bit longer to compile. The Tuesday and Wednesday headcount reports did seem to correlate that the project would be on track, but when certified payrolls came through, they'd see a significant lag. Encore has now been talking to the subcontractors about the fact that their data supports the weekend workforce disparity. Ms. Earll said they're looking very high level at the issue, and stated that with July and August numbers increasing by a full 1%, even with the total workforce going up, it's promising.

REVIEW: MGM Design/Construction Activity

11:04 a.m. Commissioner Stebbins provided a brief review of the MGM report in absentia. All data provided to date regarding construction, design and workforce were exceeding project goals.

The Commissioner noted that while no photos were provided, he personally was in attendance for both test nights and the opening night. He said feedback was very positive and that people are blown away by the final construction, especially with the way it blends into the local town and community. Additionally, he had spoken with Brian Packer, who was ecstatic with how both the project completion and the affirmative action plan turned out.

11:06 a.m. Two points were raised by Ms. Moir. She expressed concern that for the most recent quarter, the report showed women at 6.72% of hours worked, which is below the overall goal of 6.9%. Though the overall total for women's hours on the project is at 8.3%, MGM's union construction hours for women is at 7.36%. Ms. Moir expressed interest in making sure that the total does not slip below the 6.9%. Secondly, there was question about MGM Springfield's permanent construction

crew and hoping that goal for the workforce could be 20% women, in alignment with the Build a Life campaign's industry goal.

New Business/Announcements/Update –

11:15 a.m. Ms. Griffin reminded the committee that the last meeting for MGM with their final presentation will be on Oct. 9. The meeting has been moved, and will take place from 2-4pm with a diversity close out celebration to follow. That event, put on by MGM, will begin at 5:30pm and will include anyone who has worked on the project, as well as some others from the community.

She also made note of the meeting dates and locations for November and December, which had been updated and were included in the packet.

11:18 a.m. Ms. Skidmore stated that the MA Girls in Trades event will be held at the IBEW 103 on Nov. 14 and all are invited. At least 500 girls in vocational high schools will attend with a full program of career fair and workshops. That week is National Apprenticeship week, as well.

Ms. Peterson added that they plan on having an apprentice lunch that week, too.

Ms. Skidmore stated that anyone hosting an event in tandem with that week can submit their details and it will be posted to the National Apprenticeship Week website.

11:19 a.m. Ms. Peterson shared that Encore has begun some limited operational hiring. She noted that many more positions will open in the spring, but requested that committee members take one of her employment cards.

11:23 a.m. A motion was made to adjourn the meeting. Motion passed unanimously.

List of Documents and Other Items Used:

1. September 2018 MGC AOC Agenda, signed 9/6/18 (pdf)
2. MGC AOC Draft Meeting Minutes from Aug. 14, 2018
3. Encore Boston Harbor June 2018 AOC Report v2 (pdf)
4. 2018 August EBH Construction Workforce (pdf)
5. 9-11-18 MGM Springfield AOC Presentation- FINAL (pdf)
6. 8-31-18 August Workforce Diversity Reports (pdf)
7. MGM Springfield Access and Opportunity data August 2018 (pdf)
8. Encore Everett Access and Opportunity data August 2018 (pdf)

ACCESS & OPPORTUNITY MONTHLY UPDATE SEPTEMBER 2018



Participation Goals Review

Consultant / Contractor Participation – Design Contracts:

Minority Business Enterprise (MBE): 7.9%

Women Business Enterprise (WBE): 10%

Veteran Business Enterprise (VBE): 1%

Contractor Participation – Construction Contracts:

Minority Business Enterprise (MBE): 5%

Women Business Enterprise (WBE): 5.4%

Veteran Business Enterprise (WBE): 1%

Workforce Participation – Construction (% of workforce hours):

Minorities: 15.3%

Women: 6.9%

Veterans: 3%

Design: M/W/VBE Participation

- As of September 30th, 23.3%, \$14.5 million of project design contracts have been awarded to M/W/VBEs.

	# Contract Awards	Goal	Awarded to Date	\$ Awarded to Date
MBE	13	7.9%	8.8%	\$5.4 M
WBE	15	10.0%	8.1%	\$5.1 M
VBE	4	1.0%	6.5%	\$4.0 M
TOTAL	31	18.9%	23.3%	\$14.5 M

Total Qualified Design Spend = \$62,149,353

M/W/VBE contract awards report includes awards made to businesses with more than one diverse classification (i.e. M/WBE).

Totals reported deduct any double counting due to awards to businesses with more than one diverse classification.

Design: M/W/VBE Participation

MBE (13)	Consultant / Contractor	Location	Scope	Award Amount (\$)	% Goal	% of Awarded Contracts
	Bryant Associates (Sub to AECOM)	Boston, MA	Surveying			
	Bukhari Design Studio	Las Vegas, NV	Interior Design			
	Crabtree McGrath (Sub to Jacobs)	Georgetown, MA	Food Service			
	C&C Consulting Engineers (Sub to AECOM)	Boston, MA	Surveying			
	DREAM Collaborative (Sub to Jacobs)	Boston, MA	Architecture			
	Eric Montelongo Irrigation Design	Orange, CA	Irrigation Design			
	Fernandez & Associates (Sub to Jacobs)	Byfield, MA	Fire Protection			
	Michael Hong Architects Inc.	Culver City, CA	Themed Architecture			
	Nobis Engineering (Sub to Bohler)	Concord, NH	Service Road Design			
	PEER Consultants(M/WBE) (Sub to Bohler)	Burlington, MA	Construction Administration			
	The Radio Frequency Network Company	Burbank, CA	Network Design			
	SAR Engineering (Sub to Jacobs)	Quincy, MA	MEP			
	Shen Milsom & Wilke (Sub to Jacobs)	New York, NY	Acoustics			
	TOTAL			\$5,439,916	7.9%	8.8%
WBE (15)						
	City Point Partners (Sub to AECOM)	Boston, MA	Roadway Inspection Services			
	Cleo Design	Las Vegas, NV	Interior Design			
	Comprehensive Environmental (Sub to AECOM)	Marlborough, MA	Permitting, Environmental			
	Design Enterprise	Las Vegas, NV	Interior Design			
	Keville Enterprises (Sub to AECOM)	Boston, MA	Scheduling, Cost Estimating			
	Lumen Studio (Sub to AECOM)	Lowell, MA	Lighting Design			
	Pam Shadley Associates (Sub to Lifescapes)	Lexington, MA	Landscape Architecture			
	Pam Shadley Associates (Sub to AECOM)	Lexington, MA	Landscape Architecture			
	PEER Consultants (M/WBE)(Sub to Bohler)	Burlington, MA	Construction Administration			
	Regina Villa Associates (Sub to AECOM)	Boston, MA	Public Relations / Outreach			
	Ryan Biggs Clark Davis	Clifton Park, NY	Independent Structural Review			
	Saam Architecture (Sub to Jacobs)	Boston, MA	Architecture			
	Saam Architecture	Boston, MA	Interior Architecture			
	Shadley Associates (Sub to AECOM)					
	Slover & Company	New York, NY	Signage Design			
	TOTAL			\$5,052,022	10.0%	8.1%
VBE (4)						
	JBA Consulting Engineers (Sub to Jacobs)	Las Vegas, NV	MEP, FP, Telecomm			
	JBA Consulting Engineers	Las Vegas, NV	Audio Visual			
	Eslick Design Associates	Tulsa, OK	Signage			
	Fort Hill Infrastructure (Sub to AECOM)	Boston, MA	Traffic Engineering			
	TOTAL			\$4,038,300	1.0%	6.5%

Construction: M/W/VBE Participation

- As of September 30th, 18.0%, \$229.3 million of construction contracts & purchase orders have been awarded to M/W/VBEs.
- Construction contracts & purchase orders in September included 1 award to a M/VBE.

	# Contract Awards	Goal	Awarded to Date	\$ Awarded to Date
MBE	79	5.0%	6.1%	\$77.7 M
WBE	154	5.4%	11.3%	\$144.1 M
VBE	49	1.0%	2.6%	\$32.7 M
TOTAL*	241	11.4%	18.0%	\$229.3 M

Total Qualified Construction Spend = \$1,271,917,823

* M/W/VBE contract awards report includes awards made to businesses with more than one diverse classification (i.e. M/WBE). Totals reported deduct any double counting due to awards to businesses with more than one diverse classification.

Construction: MBE Participation, 79 Contracts Awarded



MBE (79)	Sub-Contractor / Supplier	Location	Scope	Award Amount (\$)	% Goal	% of Awarded Contracts
	All Time Service, Inc. (M/WBE)	Jamaica Plain, MA	Cleaning			
	Adonai Water (M/WBE)	Randolph, MA	Water Supply			
	Adonai Water (M/WBE)	Randolph, MA	Water Supply			
	Anvil Steel & Engineering (M/VBE)	Taunton, MA	Shear Stud Installation			
	Anvil Steel & Engineering (M/VBE)	Taunton, MA	Rebar at main level			
	Anvil Steel & Engineering (M/VBE)	Taunton, MA	Misc. Metals & Glass			
	Anvil Steel & Engineering (M/VBE)	Taunton, MA	Labor - Ironworkers			
	Ariston	Alhambra, CA	Furniture			
	ASA Environmental Products (M/WBE)	Stonington, CT	Drywall Materials Supply			
	ASA Environmental Products (M/WBE)	Stonington, CT	Construction Materials (K&M Fire)			
	Bluebird Graphic Solutions	Woburn, MA	Fabrication			
	BRAVA Electric & Telecom	Brockton, MA	Labor for PV Installation			
	Building Enclosure Associates	Charlestown, MA	Commissioning			
	C&D Electronics (M/WBE)	Holyoke, MA	Specialty Equipment, Appliances			
	Carl-Louis & Co. Inc.	Dorchester, MA	Pipes, Valves, Fittings, Drainage			
	Carol's Lighting (M/W/VBE)	Canton, MA	Lighting Supplies & Materials			
	Carol's Lighting (M/W/VBE)	Canton, MA	Lighting Supplies & Materials			
	Carol's Lighting (M/W/VBE)	Canton, MA	Lighting Supplies & Materials			
	Carol's Lighting (M/W/VBE)	Canton, MA	Lighting Supplies & Materials			
	Carol's Lighting (M/W/VBE)	Canton, MA	Lighting Supplies & Materials			
	Carol's Lighting (M/W/VBE)	Canton, MA	Lighting Supplies & Materials			
	Carol's Lighting (M/W/VBE)	Canton, MA	Lighting Supplies & Materials			
	Carol's Lighting (M/W/VBE)	Canton, MA	Lighting Supplies & Materials			
	CDP Fastener Group	Brockton, MA	Ejector Pump Control Panel Supply			
	Charter Contracting Company	Boston, MA	Remediation			
	Charter Contracting Company	Boston, MA	Trucking			
	Charter Contracting Company	Boston, MA	Dredging			
	Don Martin	Marshfield, MA	Paving			
	Don Martin	Marshfield, MA	Paving			
	Don Martin	Marshfield, MA	Paving			
	D. Silva Trucking	Carver, MA	Trucking			
	Duray J.F. Duncan Industries	Downey, CA	Food Service Equipment			
	Edwards Group (M/WBE)	Mattapan, MA	Onsite Trucking/Soils Hauling			
	Erik Rueda Design Lab (M/VBE)	Chelsea, MA	Conference Tables			
	Edwards Group (M/WBE)	Mattapan, MA	Onsite Trucking/Soils Hauling			
	Edwards Group (M/WBE)	Mattapan, MA	Trucking			
	Evermore Light & Power (M/WBE)	Tewksbury, MA	ALC Install			
	Fisher Contracting Corporation (M/WBE)	Worcester, MA	Living Shore Line Earthwork			

Construction: MBE Participation, 79 Contracts Awarded



MBE (79)	Sub-Contractor / Supplier	Location	Scope	Award Amount (\$)	% Goal	% of Awarded Contracts
	FL&A Trucking	Dorchester, MA	Trucking			
	Gira Steel (M/WBE)	West Columbia, SC	Steel Fabrication			
	Global Supply Management (M/W/VBE)	Henderson, NV	Seating			
	Hope Trucking	Lynn, MA	Trucking			
	Henry Owens Movers	Everett, MA	Logistical Services and Warehousing			
	Independent Pipe Service	Houston, TX	Drill Casing Supply			
	Independent Pipe Service	Houston, TX	Pipe Supplies			
	In Order Business Solutions (M/WBE)	Roxbury, MA	Construction Compliance			
	Jerez LLC (M/WBE)	Saugus, MA	Sealer at VCT			
	Jerez LLC (M/WBE)	Saugus, MA	Construction Cleanup Services			
	Jerez LLC (M/WBE)	Saugus, MA	Final Cleaning			
	JHP Industrial Supply Co. Inc.	Syracuse, NY	Pipe, Valves, Fittings			
	KO Stone, Inc	Woburn, MA	Final Cleaning			
	Lancaster Packaging (M/WBE)	Hudson, MA	Special Equipment, Appliances			
	M-O-N Landscaping	North Dartmouth, MA	Erosion Control			
*	Mack Designer Hardware	Burlington, MA	Hardware			
	Moor Metals Inc	Holliston, MA	Pipe, Piles, Tile & Rod			
	Moor Metals Inc	Holliston, MA	Metal Materials			
	Moor Metals Inc	Holliston, MA	Metal Materials			
	Moor Metals Inc	Holliston, MA	Metal Materials			
	Native Gaming Services	Atmore, AL	Gaming Furniture			
	PMA Consultants	Ann Arbor, MI	Change Order Review			
	PSN Construction	Leominster, MA	Labor			
	Radiant Logistics Partners LLC	Belleuve, WA	Logistical Services and Warehousing			
	Regis Steel	Fall River, MA	Rebar Cages			
	Regis Steel	Fall River, MA	Rebar Cages			
	Regis Steel	Fall River, MA	Install Rebar & Mesh			
	SK Fabrics	Beaverton, OR	Fabrics			
	Sunbay Supplies	Las Vegas, NV	Amenities			
	S-Celo LLC (M/WBE)	Springfield, MA	Painting & Wallcovering			
	T&T Steel Erectors	Hyde Park, MA	Steel Erection			
	Tango Construction	Fitchburg, MA	Castings Install			
	Tavares, LLC	Providence, RI	Millwork Materials & Install Services			
	Tavares, LLC	Providence, RI	Construction Labor			
	Titan Roofing (M/VBE)	Quincy, MA	Roofing			
	Total Mechanical Service Corp	Plymouth, MA	F&I Air Handlers, Heat Exchangers			
	US Inspection & Consulting	Phoenix, AZ	Materials Testing			
	Villanova Construction	Boston, MA	Paint Materials and Supplies			
	Wang Commissioning (M/WBE)	West Roxbury, MA	Building Commissioning			
	West Hartford Lock (M/WBE)	Hartford, CT	Doors			
	West Hartford Lock (M/WBE)	Hartford, CT	Doors			
	Wood & Wire Fence	Lincoln, RI	Temporary Fence			
TOTAL				\$77,750,418	5.0%	6.1%

Construction: WBE Participation, 154 Contracts Awarded

WBE (154)	Sub-Contractor / Supplier	Location	Scope	Award Amount (\$)	% Goal	% of Awarded Contracts
	ACK Marine	Quincy, MA	Hopper Barge Rental			
	Adonai Water (M/WBE)	Randolph, MA	Water Supply			
	Adonai Water (M/WBE)	Randolph, MA	Water Supply			
	Angelini Plastering, Inc	North Reading, MA	Synthetic Stucco			
	Albanese Brothers, Inc	Dracut, MA	Stone			
	Albanese Brothers, Inc	Dracut, MA	Furnish stone & gravel			
	Alliance Detective & Security	Everett, MA	Site Security			
	Alliance Detective & Security	Everett, MA	Site Security			
	All Time Service, Inc. (M/WBE)	Jamaica Plain, MA	Cleaning			
	Architectural Products	Burlington, CT	Glass & Glazing Materials			
	ASA Environmental Products (M/WBE)	Stonington, CT	Drywall Materials Supply			
	ASA Environmental Products (M/WBE)	Stonington, CT	Drywall Materials Supply			
	ASA Environmental Products (M/WBE)	Stonington, CT	Construction Materials (K&M Fire)			
	Back Bay Concrete	Wakefield, MA	Place and Finish Concrete Slab			
	Baker Sign Works	Fall River, MA	Signage			
	Baker Steel	Fall River, MA	Steel Estimating & Procurement			
	Brennan Consulting	Burlington, MA	Surveying			
	Brennan Consulting	Burlington, MA	As-Built Survey			
	BOSS Steel	Everett, MA	Steel Erection			
	Boston Bridge & Steel	Methuen, MA	Catwalk Railing Fabrication			
	Carol's Lighting (M/W/VBE)	Canton, MA	Lighting Supplies & Materials			
	Carol's Lighting (M/W/VBE)	Canton, MA	Lighting Supplies & Materials			
	Carol's Lighting (M/W/VBE)	Canton, MA	Lighting Supplies & Materials			
	Carol's Lighting (M/W/VBE)	Canton, MA	Lighting Supplies & Materials			
	Carol's Lighting (M/W/VBE)	Canton, MA	Lighting Supplies & Materials			
	Carol's Lighting (M/W/VBE)	Canton, MA	Lighting Supplies & Materials			
	Carol's Lighting (M/W/VBE)	Canton, MA	Lighting Supplies & Materials			
	Carol's Lighting (M/W/VBE)	Canton, MA	Light Fixtures			
	Carol's Lighting (M/W/VBE)	Canton, MA	Lighting Supplies & Materials			
	C&D Electronics (M/WBE)	Holyoke, MA	Specialty Equipment, Appliances			
	Chapman Electric (W/VBE)	Sandwich, MA	ALC Installation			
	Coastal Marine	Canton, MA	Remediation			
	Coghlin Electrical	Worcester, MA	Medium Voltage Electrical			
	Coghlin Electrical	Worcester, MA	Podium North Electrical			
	Comtronics	Quincy, MA	Radios			
	Comus Design and Construction, Inc.	Clarksburg, MD	Diamond Plate Supplier			
	Consolidated Brick Supplies	Avon, MA	Masonry Accessories			
	County Draperies	Middleton, New York	Draperies			
	Dagle Electrical Construction	Woburn, MA	Electrical			
	Dagle Electrical Construction	Woburn, MA	Roadwork Electrical, MBTA Security			
	Delucca Fence Company	Methuen, MA	Fencing			
	Edwards Group (M/WBE)	Mattapan, MA	Onsite Trucking/Soils Hauling			
	Edwards Group (M/WBE)	Mattapan, MA	Trucking & Freight			
	Evermore Light & Power (M/WBE)	Tewksbury, MA	ALC Install			
	Fabiano Oil Corp	Wrentham, MA	Fuel Supply			
	Fabric Innovations	Coral Gables, FL	Fabrics			
	Federal Concrete	Hopkinton, MA	Site Concrete			
	Fiber Optic Splicing & Testing	Wakefield, MA	Furnish Fire Cable			
	Duende Glass	New Bedford, MA	Glass Balustrades			
	Fisher Contracting Corporation (M/WBE)	Worcester, MA	Living Shoreline Earthwork, Concrete			
	FOH dba Front of House	Miami, FL	FF&E			
	General Safety Services Corp.	Canton, MA	Safety Equipment & Material			
	General Safety Services Corp.	Canton, MA	Furnish Hangers & Attachments			

Construction: WBE Participation, 154 Contracts Awarded



WBE (154)	Sub-Contractor / Supplier	Location	Scope	Award Amount (\$)	% Goal	% of Awarded Contracts
	Gira Steel (M/WBE)	West Columbia, SC	Steel Fabrication			
	Gladstone	Las Vegas, NV	Lighting & Hardware			
	Gladstone	Las Vegas, NV	Lighting & Hardware			
	Gladstone	Las Vegas, NV	Lighting & Hardware			
	Glass Art Studios 2	Boston, MA	Glass			
	Global Supply Management (M/W/VBE)	Henderson, NV	Seating			
	Granite City Electrical	Quincy, MA	Electrical Supplies			
	Granite City Electrical	Quincy, MA	Electrical Supplies			
	Granite City Electrical	Quincy, MA	Electrical Supplies			
	Hat Creek Outfit	Rockland, MA	HVAC Supplies			
	Hat Creek Outfit	Rockland, MA	Pipe, Fitting Valves Supplier			
	Hat Creek Outfit	Rockland, MA	Pipe, Fitting Valves Supplier			
	Hat Creek Outfit	Rockland, MA	Pipe, Fitting Valves Supplier			
	Heritage Construction	Watertown, MA	Supplies			
	Heritage Construction & Supply	South Boston, MA	Paint Supplies			
	HiWay Safety Systems Inc	Rockland, MA	Pavement Markings			
	Imex Cargo	East Boston, MA	Trucking & Freight			
	Imex Cargo	East Boston, MA	Trucking & Freight			
	Inlight International	Gardena, CA	Portable and Hardwire Lighting			
	Interior Resources Group	Andover, MA	Office Furniture & Installation			
	Interstate Steel Sales, Inc.	Orchard Park, NY	Materials - Plates, Channels			
	In Order Business Solutions (M/WBE)	Dorchester, MA	Construction Compliance			
	J. Thibert Architectural Woodwork	Wilmington, MA	Millwork Installation			
	Jackson Glass	Roslindale, MA				
	Janet Yonaty	Hollywood, CA	Fabrics & Wallcover			
	Jerez LLC (M/WBE)	Saugus, MA	Sealer at VCT			
	Jerez LLC (M/WBE)	Saugus, MA	Construction Cleanup Services			
	Jerez LLC (M/WBE)	Saugus, MA	Final Cleaning			
	J F Shine Mechanical	West Roxbury, MA	Plumbing Insulation			
	JMD Building Products	New York, NY	Pipe supplies			
	* Keiver Willard Lumber	Newburyport, MA	Lumber			
	Ketchum Professional Resources	Portage, MI	Food Service Equipment			
	Keville Enterprises	Boston, MA	Construction Inspections			
	Lancaster Packaging (M/WBE)	Hudson, MA	Special Equipment, Appliances			
	Lily Jack	Gardena, CA	Seating			
	L&L Contracting	Braintree, MA	Materials			
	Lub-O-Line Industrial Oil	Somerville, MA	Lube & Fuel Supplier			
	Lusive Décor	Los Angeles, CA	Hardwire and Portable Lighting			
	Lynn Ladder & Scaffolding	Lynn, MA	Scaffolding			
	Maya Romanoff Design	Skokie, IL	Wallcovering			
	MCQ Fine Art, LLC	Las Vegas, NV	Fine Art Sculptures			
	Michele Quinn Fine Art Advisory	Las Vegas, NV	Art and Antiques			
	Melo's Rodbusters	South Dartmouth, MA	Reinforcing Steel Supply			
	Modulease Corporation	Plainville, MA	Storage Container			
	Nobscot Supply Company	Framingham, MA	Supplies			
	Novel Iron Works	Amesbury, MA	Steel Fabrication			
	Off Shore Construction	Manchester, CT	Roofing Materials			
	Opuzen Design	Los Angeles, CA	Fabrics			
	Osprey Construction Supply	Sharon, MA	Pipe Hanger & Fastener Supply			
	Osprey Construction Supply	Sharon, MA	Pipe Hanger & Fastener Supply			

Construction: WBE Participation, 154 Contracts Awarded



WBE (154)	Sub-Contractor / Supplier	Location	Scope	Award Amount (\$)	% Goal	% of Awarded Contracts
	Osprey Construction Supply	Sharon, MA	Materials, Supplies			
	Osprey Construction Supply	Sharon, MA	Pipe Markers			
	Osprey Construction Supply	Sharon, MA	Furnish pipe & valve tag ID			
	Osprey Construction Supply	Sharon, MA	Materials & Supplies			
	PC Trucking	Tewksbury, MA	Trucking			
	Pest End Inc	Methuen, MA	Pest Control			
	P J Spillane	Everett, MA	Waterproofing			
	P J Spillane	Everett, MA	Waterproofing			
	P J Spillane	Everett, MA	Waterproofing			
	P J Spillane	Everett, MA	Waterproofing			
	Protocol Management Services	N. Attleboro, MA	Materials			
	Quality Air	Holbrook, MA	Sheet Metal Fabrication			
	Ramco	West Bridgewater, MA	Stakes, Hay Bales, Fence			
	RAREculture	New York, NY	Artwork			
	Rebars & Mesh	Haverhill, MA	Rebar Supply			
	Rebars & Mesh	Haverhill, MA	Rebar Supply			
	Rebars & Mesh	Haverhill, MA	Rebar Supply			
	Rebars & Mesh	Haverhill, MA	Rebar at Lower Garage			
	Reid Witlin	Northridge, CA	Fabrics			
	S-Celo LLC (M/WBE)	Springfield, MA	Painting & Wallcovering			
	Shanahan Sound & Electronics	Lowell, MA	Audio/Video			
	SOS Corporation	Milford, MA	Labor - Pre-Cast Masonry			
	SOS Corporation	Milford, MA	Labor - Pre-Cast Masonry			
	SOS Corporation	Milford, MA	Materials			
	SOS Corporation	Milford, MA	Final Cleaning			
	Southcoast Supplies	Fairhaven, MA	CMU, Mortar, and Grout			
	Taibi Equipment	Wakefield, MA	Equipment Rental			
	Taycam LLC	Plymouth, MA	Equipment Rental			
	Taycam LLC	Plymouth, MA	Tools / Fixtures			
	Thompson Company	E. Weymouth, MA	Doors, Frames, Hardware			
	Thompson Company	E. Weymouth, MA	Doors, Frames, Hardware			
	Tools Unlimited	Stoughton, MA	Small tools supply			
	Tools Unlimited	Stoughton, MA	Tools & Hanging Materials			
	Tools Unlimited	Stoughton, MA	Saw Blades, Small Tools, PPE			
	Turtle & Hughes	Linden, NJ	Commodities / Gear			
	Turtle & Hughes	Linden, NJ	Electrical Materials & Equipment			
	Turtle & Hughes	Linden, NJ	Electrical Materials & Equipment			
	Turtle & Hughes	Linden, NJ	Electrical Materials & Equipment			
	Turtle & Hughes	Linden, NJ	Electrical Materials & Equipment			
	Turtle & Hughes	Linden, NJ	Electrical Materials & Equipment			
	United Elevators	Knoxville, TN	End Suite Elevators			
	Urban Insulation	Salisbury, MA	Furnish, Install Pipe Insulation			
	Urban Insulation	Salisbury, MA	Insulation			
	Urban Insulation	Salisbury, MA	F&I HVAC Ductwork & Piping			
	Valley Forge Textiles	Ft. Lauderdale, FL	Fabrics			
	Welch Associates Land Surveyors	West Bridgewater, MA	Layouts, As-built Surveys			
	Welch Associates Land Surveyors	West Bridgewater, MA	Layouts, As-built Surveys			
	Wang Commissioning (M/WBE)	West Roxbury, MA	Building Commissioning			
	West Hartford Lock (M/WBE)	Hartford, CT	Doors			
	West Hartford Lock (M/WBE)	Hartford, CT	Doors			
	William G. Moore	Freehold, NJ	Timber Piles Supply			
	Wynco Distributors of New England	Wilmington, MA	Carpet Pad Vendor			
				TOTAL	\$144,126,409	5.4%

Construction: VBE Participation, 49 Contracts Awarded



VBE (49)	Sub-Contractor / Supplier	Location	Scope	Award Amount (\$)	% Goal	% of Awarded Contracts
	4 Seasons Property Management	Hull, MA	Painting			
	AJ Industries West	Las Vegas, NV	Laundry Equipment			
	Anvil Steel Engineering (M/VBE)	Taunton, MA	Shear Stud Installation			
	Anvil Steel & Engineering (M/VBE)	Taunton, MA	Rebar at main level			
	Anvil Steel & Engineering (M/VBE)	Taunton, MA	Misc. Metals & Glass			
	Anvil Steel & Engineering (M/VBE)	Taunton, MA	Labor - Ironworkers			
	Arrow Security	Springfield, MA	Site Security			
	Broco Oil	North Reading, MA	Fuel Supply			
	Broco Oil	North Reading, MA	Fuel Supply			
	Broco Oil	North Reading, MA	Fuel Supply			
	Broco Oil	North Reading, MA	Fuel Supply			
	Broco Oil	North Reading, MA	Fuel Supply			
	Broco Oil	North Reading, MA	Fuel Supply			
	Broco Oil	North Reading, MA	Fuel Supply			
	Broco Oil	North Reading, MA	Fuel Supply			
	Broco Oil	North Reading, MA	Fuel Supply			
	Broco Oil	North Reading, MA	Fuel Supply			
	Broco Oil	North Reading, MA	Fuel Supply			
	Broco Oil	North Reading, MA	Fuel Supply			
	Broco Oil	North Reading, MA	Fuel Supply			
	Broco Oil	North Reading, MA	Fuel Supply			
	Broco Oil	North Reading, MA	Fuel Supply			
	Broco Oil	North Reading, MA	Fuel Supply			
	Broco Oil	North Reading, MA	Fuel Supply			
	Broco Oil	North Reading, MA	Fuel Supply			
	Broco Oil	North Reading, MA	Fuel Supply			
	Broco Oil	North Reading, MA	Fuel Supply			
	Broco Oil	North Reading, MA	Fuel Supply			
	Broco Oil	North Reading, MA	Fuel Supply			
	Broco Oil	North Reading, MA	Fuel Supply			
	Carol's Lighting (M/W/VBE)	Canton, MA	Lighting Supplies & Materials			
	Carol's Lighting (M/W/VBE)	Canton, MA	Lighting Supplies & Materials			
	Carol's Lighting (M/W/VBE)	Canton, MA	Lighting Supplies & Materials			
	Carol's Lighting (M/W/VBE)	Canton, MA	Lighting Supplies & Materials			
	Carol's Lighting (M/W/VBE)	Canton, MA	Lighting Supplies & Materials			
	Carol's Lighting (M/W/VBE)	Canton, MA	Lighting Supplies & Materials			
	Carol's Lighting (M/W/VBE)	Canton, MA	Lighting Supplies & Materials			
	Carol's Lighting (M/W/VBE)	Canton, MA	Lighting Supplies & Materials			
	Carol's Lighting (M/W/VBE)	Canton, MA	Lighting Supplies & Materials			
	Carol's Lighting (M/W/VBE)	Canton, MA	Lighting Supplies & Materials			
	Carol's Lighting (M/W/VBE)	Canton, MA	Lighting Supplies & Materials			
	Carol's Lighting (M/W/VBE)	Canton, MA	Lighting Supplies & Materials			
	Carol's Lighting (M/W/VBE)	Canton, MA	Lighting Supplies & Materials			
	Chair Choice	Santa Fe Springs, CA	Seating			
	Chapman Electric (W/VBE)	Sandwich, MA	ALC Installation			
	Cobiax	Dedham, MA	Stud Rail Supply			
	Custom Chemicals	N. Billerica, MA	Division 10 Specialties			
	Eastern Exterior Wall	Allentown, PA	Pre-Engineered Walls			
	Erik Rueda Design Lab (M/VBE)	Chelsea, MA	Conference Tables			
	Global Supply Management (M/W/VBE)	Henderson, NV	Seating			
	Homeland Mechanical	Quincy, MA	Furnish, Install Trench Drains			
	Homeland Mechanical	Quincy, MA	Pipe Fitter Labor			
	Homeland Mechanical	Quincy, MA	F&I Horizontal Fan Coil Units			
	KWL Inc.	Franklin, MA	Trucking, Freight			
	* Mack Designer Hardware	Burlington, MA	Hardware			
	Recon Outfitters	Sturbridge, MA	Water/slurry tanks			
	Sourcing Solutions	Tigard, OR	Crane Mat Supplier			
	Swag Tools	Waltham, MA	Miscellaneous Supplies			
	Tansey Electric	Manchester, NH	Electrical Labor			
	Titan Roofing (M/VBE)	Quincy, MA	Roofing			
	The Aulson Company Inc	Methuen, MA	Shotblast			
	Thermo Dynamics	Amesbury, MA	Insulation			
	Thermo Dynamics	Amesbury, MA	Plumbing & Insulation			
	Thompson & Lichtner, Inc.	Canton, MA	Materials Testing			
			TOTAL	\$32,709,989	1.0%	2.6%

Construction: Workforce Participation

- As of September 30th, 3,984,216.2 hours of work had been completed on the project site by 6,020 workers.
- 1,339 minorities, 375 females, and 275 veterans have performed construction work on the project.

	# Workers*	# Diverse Workforce Hours*	Goal	% Diverse Workforce Hours to Date
Minority	1,339	994,890.5	15.3%	25.0%
Female	375	275,838.3	6.9%	6.9%
Veteran	275	245,460.5	3.0%	6.2%

*Individual workers, and the hours worked by those individuals, may be counted in more than one diverse category.

- Ongoing outreach and work with community partners and Career Centers, including monthly reminders about upcoming Building Trades Apprenticeship Application Opportunities
- On-site sub-contractors notifications sent to all union walk-on applicants
- **9/04:** NCTE's Tradeswomen Tuesday
- **9/19:** Monthly Tradeswomen's Lunch
- **9/20:** Building Pathways 1st Annual Event
- **9/26:** Builders of Color Coalition Site Tour

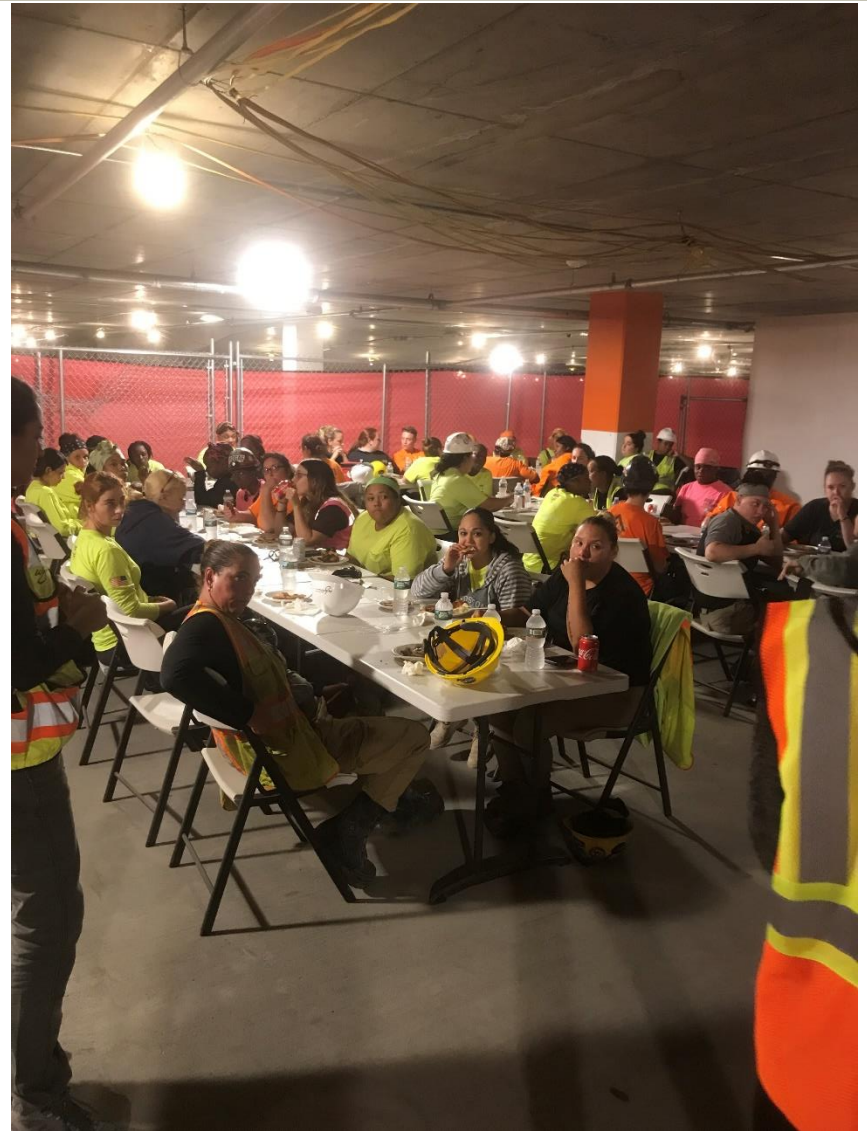
Corrective Action Meetings

- 1) Coghlin Electric
- 2) T&T Electric
- 3) Metropolitan Interactive
- 4) J.C. Cannistraro
- 5) Longden Company
- 6) Yesco
- 7) M.L. McDonald

NCTE's Tradeswomen Tuesday



Tradeswomen's Monthly Lunch

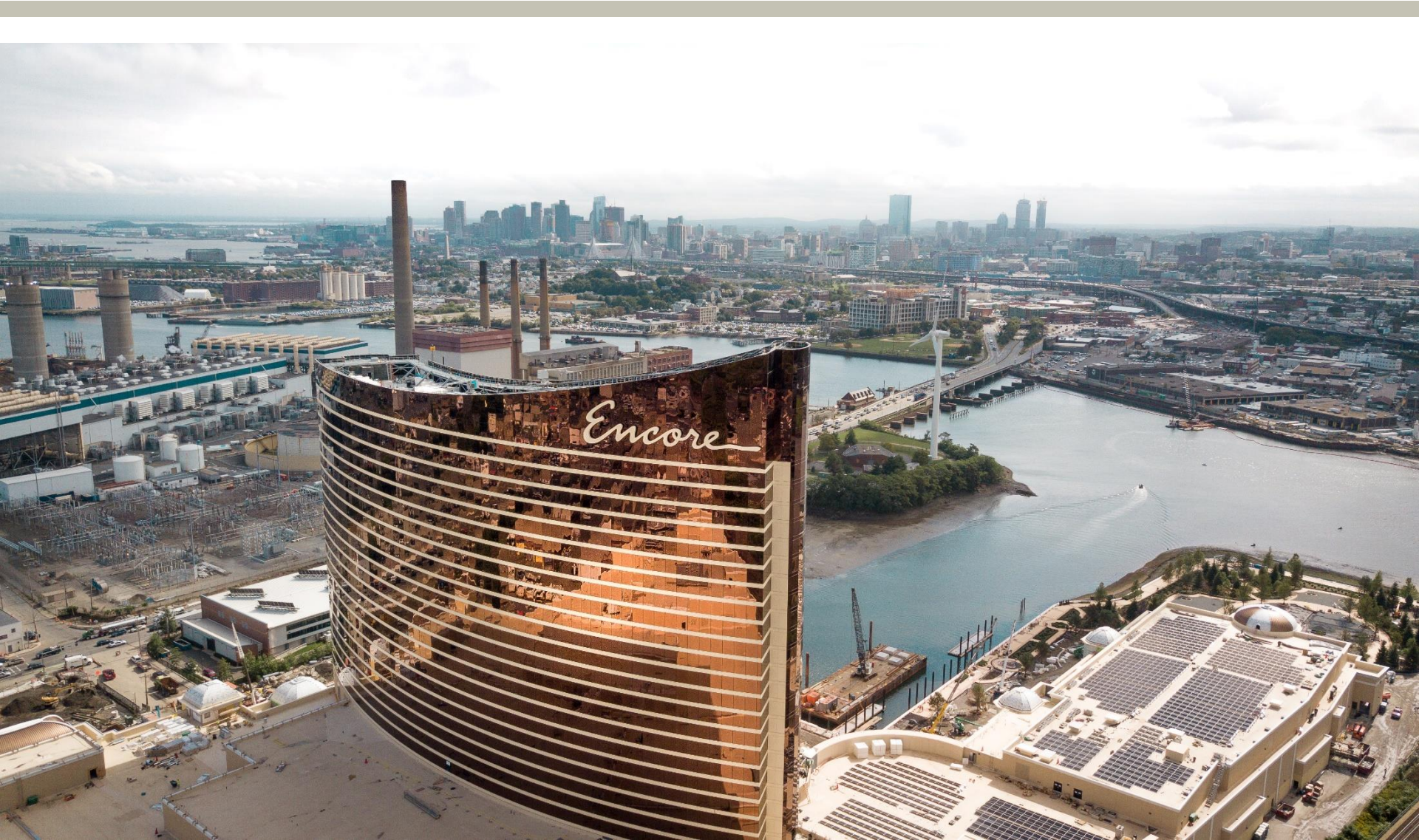


Building Pathways 1st Annual Event



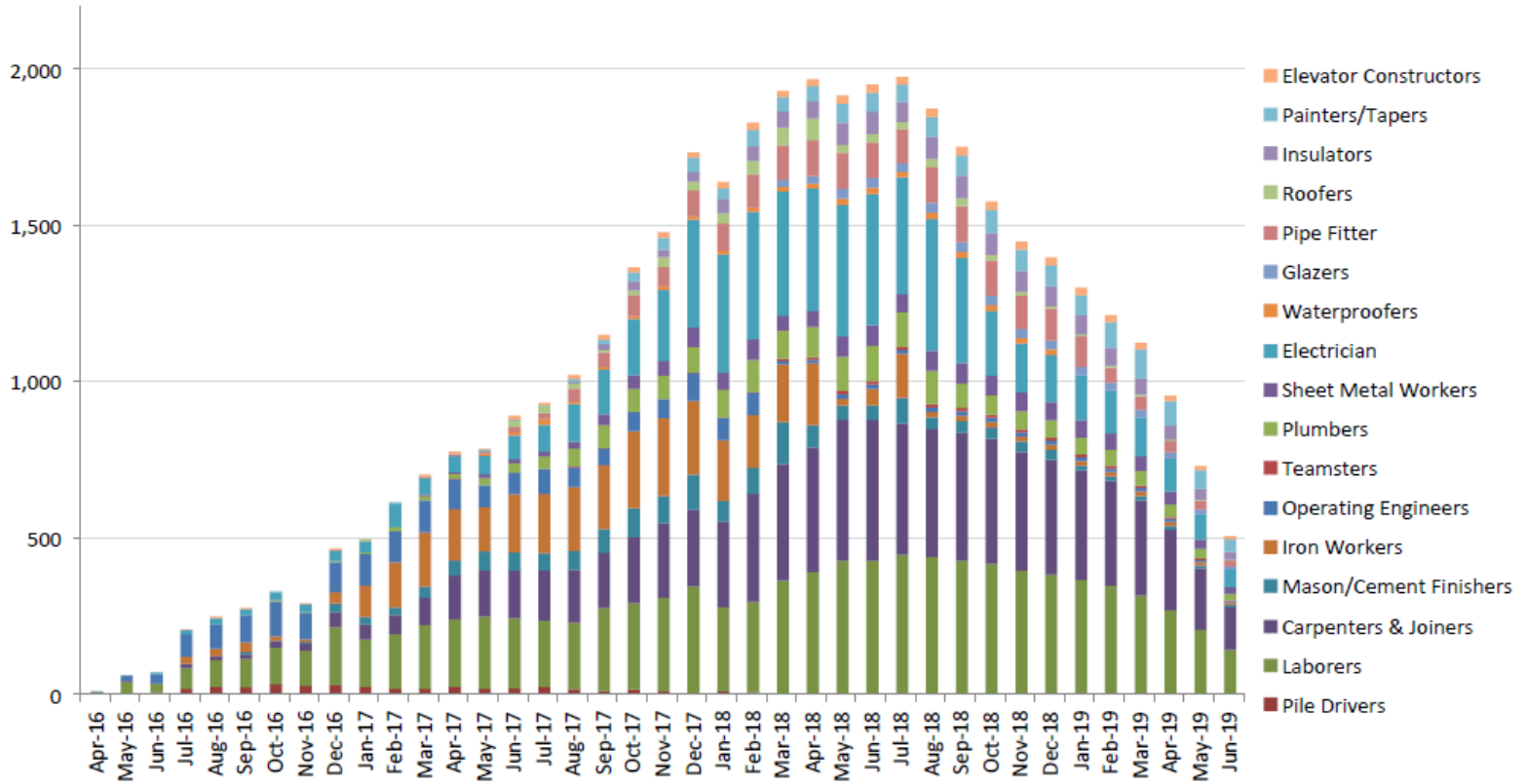
Builders of Color Coalition Site Tour







Encore Boston Harbor Labor Projection



For information purposes only; number of onsite workers.
Subject to change without notice at Suffolk's discretion

THANK YOU



Workforce Summary Report

ENCORE BOSTON HARBOR
Construction Workforce Diversity
09/30/2018

09/01/2015 -

CONTRACTOR	SEPTEMBER 2018											PROJECT TO DATE										
	Total Hours	Total # Workers	MINORITY - Goal: 15.3%			FEMALE - Goal: 6.9%			VETERAN - Goal: 3.0%			Total Hours	Total # Workers	MINORITY - Goal: 15.3%			FEMALE - Goal: 6.9%			VETERAN - Goal: 3.0%		
			# Workers	Hours	%	# Workers	Hours	%	# Workers	Hours	%			# Workers	Hours	%	# Workers	Hours	%	# Workers	Hours	%
AJ Conveyer and Laundry Systems	11.0	1	0	0.0	0.0%	0	0.0	0.0%	0	0.0	0.0%	269.0	4	1	86.0	32.0%	0	0.0	0.0%	0	0.0	0.0%
Allegheny Contract Flooring, Inc.	3,900.5	58	18	1,234.0	31.6%	4	248.0	6.4%	2	106.0	2.7%	36,433.0	76	20	9,809.5	26.9%	5	1,965.0	5.4%	3	2,125.5	5.8%
All-Pro Electric, LLC	0.0	0	0	0.0	0.0%	0	0.0	0.0%	0	0.0	0.0%	480.0	4	0	0.0	0.0%	0	0.0	0.0%	0	0.0	0.0%
Andella Iron Inc.	0.0	0	0	0.0	0.0%	0	0.0	0.0%	0	0.0	0.0%	565.0	4	1	153.0	27.1%	0	0.0	0.0%	0	0.0	0.0%
Angelini Plastering, Inc. (WBE)	471.5	5	0	0.0	0.0%	0	0.0	0.0%	0	0.0	0.0%	9,718.5	20	3	2,663.0	27.4%	0	0.0	0.0%	0	0.0	0.0%
Anvil Steel Engineering, Inc. (MVBE)	1,419.5	14	6	590.5	41.6%	4	374.5	26.4%	2	211.0	14.9%	19,136.5	40	15	8,692.0	45.4%	5	1,295.5	6.8%	4	3,973.0	20.8%
Archer Corp	608.5	9	1	85.0	14.0%	1	85.0	14.0%	0	0.0	0.0%	3,436.0	10	1	240.5	7.0%	1	240.5	7.0%	0	0.0	0.0%
Atlantic Lining Company Inc	0.0	0	0	0.0	0.0%	0	0.0	0.0%	0	0.0	0.0%	403.0	9	6	328.0	81.4%	0	0.0	0.0%	0	0.0	0.0%
Axion Specialty Contracting	2,031.0	29	4	227.0	11.2%	2	68.0	3.3%	3	162.0	8.0%	29,956.0	64	12	3,561.0	11.9%	5	880.0	2.9%	5	2,223.0	7.4%
Back Bay Concrete Corp. (WBE)	0.0	0	0	0.0	0.0%	0	0.0	0.0%	0	0.0	0.0%	3,801.0	58	15	963.0	25.3%	4	53.5	1.4%	3	96.5	2.5%
BOSS Steel Inc. (WBE)	0.0	0	0	0.0	0.0%	0	0.0	0.0%	0	0.0	0.0%	22,036.8	71	16	4,196.0	19.0%	3	1,406.0	6.4%	3	1,399.5	6.4%
Brava Electric & Telecom, Inc. (MBE)	273.5	3	1	102.5	37.5%	0	0.0	0.0%	0	0.0	0.0%	1,883.5	4	2	1,021.8	54.2%	0	0.0	0.0%	0	0.0	0.0%
Brightview Landscaping Development Inc.	1,408.0	24	11	748.0	53.1%	2	152.0	10.8%	0	0.0	0.0%	15,226.0	44	17	7,450.0	48.9%	4	1,640.0	10.8%	0	0.0	0.0%
Bunting Graphics, Inc.	0.0	0	0	0.0	0.0%	0	0.0	0.0%	0	0.0	0.0%	6,253.7	16	4	2,179.0	34.8%	0	0.0	0.0%	0	0.0	0.0%
Capco Steel Erection Company	493.0	5	1	73.0	14.8%	0	0.0	0.0%	0	0.0	0.0%	11,021.0	27	3	1,202.5	10.9%	1	183.0	1.7%	0	0.0	0.0%
Capital Carpet and Flooring Specialists, Inc. -	2,661.5	43	23	1,353.5	50.9%	2	121.5	4.6%	0	0.0	0.0%	9,955.5	52	29	4,457.5	44.8%	2	1,063.5	10.7%	0	0.0	0.0%
Cashman Dredging & Marine Contracting	0.0	0	0	0.0	0.0%	0	0.0	0.0%	0	0.0	0.0%	200.0	2	0	0.0	0.0%	0	0.0	0.0%	0	0.0	0.0%
Cavalieri Construction Company, Inc.	24.0	3	1	8.0	33.3%	0	0.0	0.0%	0	0.0	0.0%	5,247.0	28	6	2,428.5	46.3%	0	0.0	0.0%	1	531.0	10.1%
Century Drywall, Inc.	21,024.0	220	90	8,832.5	42.0%	16	1,385.5	6.6%	5	491.5	2.3%	363,553.8	415	170	140,086.0	38.5%	27	22,190.5	6.1%	8	12,649.3	3.5%
Chapman Construction Group, Inc. (WVBE)	484.0	10	0	0.0	0.0%	3	180.0	37.2%	0	0.0	0.0%	14,028.0	21	3	1,681.5	12.0%	4	3,403.5	24.3%	2	1,820.0	13.0%
Coastal Marine Construction	0.0	0	0	0.0	0.0%	0	0.0	0.0%	0	0.0	0.0%	2,223.5	15	0	0.0	0.0%	1	84.0	3.8%	1	116.5	5.2%
Coghlin Electrical Contractors, Inc. (WBE)	4,050.0	118	19	619.5	15.3%	8	238.5	5.9%	6	208.0	5.1%	375,892.0	244	37	61,029.5	16.2%	13	20,421.5	5.4%	13	20,280.0	5.4%
Collins Overhead Door Inc.	0.0	0	0	0.0	0.0%	0	0.0	0.0%	0	0.0	0.0%	474.2	3	0	0.0	0.0%	0	0.0	0.0%	0	0.0	0.0%
Component Assembly Systems, Inc.	4,333.0	44	6	665.0	15.3%	2	123.0	2.8%	2	259.5	6.0%	21,325.0	54	8	3,568.0	16.7%	2	960.0	4.5%	3	1,751.0	8.2%
Composite Company, Inc.	0.0	0	0	0.0	0.0%	0	0.0	0.0%	0	0.0	0.0%	470.0	6	2	278.0	59.1%	0	0.0	0.0%	0	0.0	0.0%
Construction Drilling, Inc.	0.0	0	0	0.0	0.0%	0	0.0	0.0%	0	0.0	0.0%	499.5	4	0	0.0	0.0%	0	0.0	0.0%	0	0.0	0.0%
Costa Brothers Masonry, Inc.	613.0	16	5	243.0	39.6%	1	30.5	5.0%	0	0.0	0.0%	37,735.5	77	16	9,152.5	24.3%	2	1,986.0	5.3%	1	24.0	0.1%
Cross Country Food Service Equipment	593.0	7	0	0.0	0.0%	0	0.0	0.0%	1	173.0	29.2%	1,729.5	10	0	0.0	0.0%	0	0.0	0.0%	1	456.5	26.4%
D.W. White Construction	2,217.0	25	5	506.0	22.8%	2	124.5	5.6%	1	113.0	5.1%	16,642.5	53	6	2,778.0	16.7%	4	1,432.0	8.6%	1	924.0	5.6%
Dagle Electrical Construction Corporation	299.0	19	0	0.0	0.0%	1	32.0	10.7%	1	8.5	2.8%	4,600.0	52	5	510.0	11.1%	1	48.0	1.0%	2	84.5	1.8%
Daniel Marr and Son Co.	462.5	12	3	163.0	35.2%	0	0.0	0.0%	0	0.0	0.0%	148,292.0	201	28	24,886.0	16.8%	14	7,342.5	5.0%	9	11,192.0	7.5%
DeLucca Fence Company (WBE)	0.0	0	0	0.0	0.0%	0	0.0	0.0%	0	0.0	0.0%	1,026.0	37	8	159.0	15.5%	2	24.0	2.3%	1	24.0	2.3%
Dependable Masonry Construction Co.	0.0	0	0	0.0	0.0%	0	0.0	0.0%	0	0.0	0.0%	848.5	6	2	203.0	23.9%	0	0.0	0.0%	0	0.0	0.0%
Don Martin Corporation (MBE)	0.0	0	0	0.0	0.0%	0	0.0	0.0%	0	0.0	0.0%	1,323.5	29	12	459.0	34.7%	0	0.0	0.0%	1	22.0	1.7%
Draper Elevator Cab Co, Inc.	0.0	0	0	0.0	0.0%	0	0.0	0.0%	0	0.0	0.0%	94.5	2	0	0.0	0.0%	0	0.0	0.0%	2	94.5	100.0%
D's Welding	0.0	0	0	0.0	0.0%	0	0.0	0.0%	0	0.0	0.0%	438.0	9	1	69.0	15.8%	0	0.0	0.0%	0	0.0	0.0%
Duggan & Marcon, Inc.	129.0	1	0	0.0	0.0%	0	0.0	0.0%	0	0.0	0.0%	764.0	1	0	0.0	0.0%	0	0.0	0.0%	0	0.0	0.0%
E.H. Marchant Co. Inc.	221.0	7	1	64.0	29.0%	0	0.0	0.0%	0	0.0	0.0%	4,416.0	13	1	801.0	18.1%	1	160.0	3.6%	1	220.0	5.0%
E.M. Duggan, Inc.	4,219.0	41	10	926.0	21.9%	6	513.0	12.2%	4	429.0	10.2%	137,113.5	152	23	22,708.0	16.6%	13	9,330.5	6.8%	12	15,327.0	11.2%
East Coast Fireproofing Co	301.0	6	2	48.0	15.9%	0	0.0	0.0%	1	8.0	2.7%	6,837.0	20	4	1,094.0	16.0%	2	169.0	2.5%	3	589.0	8.6%
East Coast Interiors	343.0	8	0	0.0	0.0%	1	33.0	9.6%	1	33.0	9.6%	959.0	8	0	0.0	0.0%	1	202.0	21.1%	1	146.0	15.2%
Eastern Exterior Wall Systems, Inc. (VBE)	0.0	0	0	0.0	0.0%	0	0.0	0.0%	0	0.0	0.0%	752.5	1	0	0.0	0.0%	0	0.0	0.0%	0	0.0	0.0%
Easton Concrete Cutting & Drilling LLC	0.0	0	0	0.0	0.0%	0	0.0	0.0%	0	0.0	0.0%	594.0	13	1	27.0	4.5%	0	0.0	0.0%	0	0.0	0.0%
Edward G. Sawyer Co., Inc.	0.0	0	0	0.0	0.0%	0	0.0	0.0%	0	0.0	0.0%	143,644.0	145	25	34,012.0	23.7%	12	13,850.0	9.6%	3	4,977.5	3.5%

CONTRACTOR	SEPTEMBER 2018										
	Total Hours	Total # Workers	MINORITY - Goal: 15.3%			FEMALE - Goal: 6.9%			VETERAN - Goal: 3.0%		
			# Workers	Hours	%	# Workers	Hours	%	# Workers	Hours	%
Evermore Light and Power Inc. (WBE)	316.0	3	0	0.0	0.0%	0	0.0	0.0%	1	112.0	35.4%
F.C. Construction Corp.	240.5	17	5	48.5	20.2%	0	0.0	0.0%	1	8.0	3.3%
Federal Concrete (WBE)	691.0	12	4	240.0	34.7%	2	136.0	19.7%	1	48.0	6.9%
Ferguson-Neudorf Glass Inc.	0.0	0	0	0.0	0.0%	0	0.0	0.0%	0	0.0	0.0%
Fischbach & Moore Electric Group, LLC	0.0	0	0	0.0	0.0%	0	0.0	0.0%	0	0.0	0.0%
Fisher Contracting Corporation (MWBE)	0.0	0	0	0.0	0.0%	0	0.0	0.0%	0	0.0	0.0%
Food Equipment Installations, Inc.	376.0	8	0	0.0	0.0%	0	0.0	0.0%	0	0.0	0.0%
Geologic Earth Exploration, Inc.	0.0	0	0	0.0	0.0%	0	0.0	0.0%	0	0.0	0.0%
Gleeson Powers, Inc.	476.0	8	1	32.0	6.7%	1	88.0	18.5%	0	0.0	0.0%
Greenwood Industries, Inc.	324.5	8	6	244.5	75.3%	0	0.0	0.0%	0	0.0	0.0%
Griffin Door dba Overhead Door Specialities	0.0	0	0	0.0	0.0%	0	0.0	0.0%	0	0.0	0.0%
Hayward Baker Inc.	0.0	0	0	0.0	0.0%	0	0.0	0.0%	0	0.0	0.0%
Homeland Mechanical LLC (VBE)	0.0	0	0	0.0	0.0%	0	0.0	0.0%	0	0.0	0.0%
Hub Foundation Co., Inc.	0.0	0	0	0.0	0.0%	0	0.0	0.0%	0	0.0	0.0%
J & M Brown Company, Inc.	1,526.0	21	5	379.0	24.8%	2	144.0	9.4%	1	88.0	5.8%
J Rams Inc	0.0	0	0	0.0	0.0%	0	0.0	0.0%	0	0.0	0.0%
J. Derenzo Co.	3,738.0	36	8	849.5	22.7%	4	385.5	10.3%	3	232.0	6.2%
J. Thibert Architectural Woodwork Installation	1,535.5	10	1	170.5	11.1%	1	170.5	11.1%	1	194.0	12.6%
J.C. Cannistraro	1,100.5	13	1	99.0	9.0%	0	0.0	0.0%	0	0.0	0.0%
J.C. Higgins Corp	3,456.0	31	6	669.0	19.4%	3	294.0	8.5%	2	138.0	4.0%
J.F. White Contracting Company, Inc	535.5	9	0	0.0	0.0%	0	0.0	0.0%	0	0.0	0.0%
Jackson Glass, Inc. (WBE) - Payroll is done on	1,979.5	26	6	361.0	18.2%	4	305.0	15.4%	2	211.5	10.7%
Jerez LLC (MWBE)	642.5	5	5	642.5	100.0%	1	119.5	18.6%	0	0.0	0.0%
John W. Egan Co., Inc.	0.0	0	0	0.0	0.0%	0	0.0	0.0%	0	0.0	0.0%
JP Obelisk, Inc.	0.0	0	0	0.0	0.0%	0	0.0	0.0%	0	0.0	0.0%
JR Vinagro Corp.	0.0	0	0	0.0	0.0%	0	0.0	0.0%	0	0.0	0.0%
K&H Electrical Systems, Inc.	0.0	0	0	0.0	0.0%	0	0.0	0.0%	0	0.0	0.0%
K&K Acoustical Ceilings, Inc.	571.0	7	2	192.0	33.6%	1	88.0	15.4%	1	111.0	19.4%
K&M Fire Protection Services, Inc. - Payroll	1,923.0	27	5	353.0	18.4%	2	128.0	6.7%	1	67.0	3.5%
K. DaPonte Construction Corp.	104.0	7	1	16.0	15.4%	0	0.0	0.0%	0	0.0	0.0%
K.O. Stone Inc. (MBE)	320.0	9	9	320.0	100.0%	5	176.0	55.0%	0	0.0	0.0%
Kenneth Castellucci & Associates, Inc.	762.0	13	1	72.0	9.4%	0	0.0	0.0%	0	0.0	0.0%
Killea Equipment	297.0	3	2	185.0	62.3%	0	0.0	0.0%	0	0.0	0.0%
KM Kelly, Inc.	1,583.0	16	3	246.0	15.5%	2	184.0	11.6%	1	22.0	1.4%
L.J. Mishel Electrical Contractors, Inc.	0.0	0	0	0.0	0.0%	0	0.0	0.0%	0	0.0	0.0%
Lan-Tel Communications, Inc.	1,229.0	12	4	437.0	35.6%	1	112.0	9.1%	2	240.0	19.5%
Leading Way Construction Co., Inc.	0.0	0	0	0.0	0.0%	0	0.0	0.0%	0	0.0	0.0%
Liberty Construction Services	15,409.0	129	41	4,535.0	29.4%	14	1,773.0	11.5%	2	196.0	1.3%
Liberty Equipment and Supply	237.0	4	1	80.0	33.8%	0	0.0	0.0%	0	0.0	0.0%
Lockwood Remediation	0.0	0	0	0.0	0.0%	0	0.0	0.0%	0	0.0	0.0%
Longden Company Inc.	0.0	0	0	0.0	0.0%	0	0.0	0.0%	0	0.0	0.0%
Lund Rebar Services, Inc.	125.0	5	1	8.0	6.4%	1	32.0	25.6%	0	0.0	0.0%
M.L. McDonald Sales Company, LLC	2,753.0	45	8	526.0	19.1%	3	164.0	6.0%	1	134.0	4.9%
Marguerite Concrete, Inc.	175.5	20	6	60.0	34.2%	0	0.0	0.0%	2	16.0	9.1%
Marr Equipment Corp.	0.0	0	0	0.0	0.0%	0	0.0	0.0%	0	0.0	0.0%
Mass Bay Electrical Corp.	0.0	0	0	0.0	0.0%	0	0.0	0.0%	0	0.0	0.0%
Massey's Plate Glass Aluminum, Inc.	688.0	13	2	160.0	23.3%	1	112.0	16.3%	1	32.0	4.7%
Maxim Crane Works, L.P.	615.0	9	2	174.0	28.3%	1	48.5	7.9%	0	0.0	0.0%
McCusker-Gill, Inc.	2,464.8	33	11	1,005.3	40.8%	2	239.0	9.7%	3	278.8	11.3%

CONTRACTOR	PROJECT TO DATE										
	Total Hours	Total # Workers	MINORITY - Goal: 15.3%			FEMALE - Goal: 6.9%			VETERAN - Goal: 3.0%		
			# Workers	Hours	%	# Workers	Hours	%	# Workers	Hours	%
Evermore Light and Power Inc. (WBE)	4,952.0	5	0	0.0	0.0%	0	0.0	0.0%	1	1,515.0	30.6%
F.C. Construction Corp.	2,275.5	35	8	414.5	18.2%	0	0.0	0.0%	1	111.0	4.9%
Federal Concrete (WBE)	3,535.5	27	7	886.5	25.1%	3	522.5	14.8%	2	270.0	7.6%
Ferguson-Neudorf Glass Inc.	44.0	1	0	0.0	0.0%	0	0.0	0.0%	0	0.0	0.0%
Fischbach & Moore Electric Group, LLC	996.0	7	1	8.0	0.8%	0	0.0	0.0%	0	0.0	0.0%
Fisher Contracting Corporation (MWBE)	4,876.0	20	3	604.0	12.4%	3	837.0	17.2%	1	276.0	5.7%
Food Equipment Installations, Inc.	3,611.0	12	0	0.0	0.0%	0	0.0	0.0%	0	0.0	0.0%
Geologic Earth Exploration, Inc.	72.5	2	0	0.0	0.0%	0	0.0	0.0%	0	0.0	0.0%
Gleeson Powers, Inc.	5,306.0	14	4	1,806.5	34.0%	1	232.0	4.4%	0	0.0	0.0%
Greenwood Industries, Inc.	3,302.8	16	7	1,403.0	42.5%	0	0.0	0.0%	0	0.0	0.0%
Griffin Door dba Overhead Door Specialities	112.0	2	0	0.0	0.0%	0	0.0	0.0%	0	0.0	0.0%
Hayward Baker Inc.	10,688.0	55	4	1,472.0	13.8%	2	250.0	2.3%	1	365.5	3.4%
Homeland Mechanical LLC (VBE)	340.0	3	0	0.0	0.0%	0	0.0	0.0%	1	168.0	49.4%
Hub Foundation Co., Inc.	18,363.5	45	6	2,839.5	15.5%	2	1,164.0	6.3%	6	4,377.0	23.8%
J & M Brown Company, Inc.	40,744.5	44	11	8,233.0	20.2%	2	3,612.5	8.9%	2	3,253.0	8.0%
J Rams Inc	17.0	2	0	0.0	0.0%	0	0.0	0.0%	1	8.0	47.1%
J. Derenzo Co.	162,063.4	134	19	36,923.5	22.8%	11	18,676.0	11.5%	11	14,100.5	8.7%
J. Thibert Architectural Woodwork Installation	4,229.5	12	1	290.5	6.9%	1	290.5	6.9%	1	476.5	11.3%
J.C. Cannistraro	34,927.0	61	4	5,282.0	15.1%	3	3,062.5	8.8%	2	504.0	1.4%
J.C. Higgins Corp	83,960.0	83	11	13,638.0	16.2%	5	7,097.5	8.5%	4	4,667.0	5.6%
J.F. White Contracting Company, Inc	34,032.0	58	8	4,712.0	13.8%	2	3,904.5	11.5%	3	1,334.5	3.9%
Jackson Glass, Inc. (WBE) - Payroll is done on	59,988.0	60	15	13,905.0	23.2%	6	7,625.0	12.7%	7	6,695.0	11.2%
Jerez LLC (MWBE)	8,933.0	9	7	7,575.0	84.8%	1	191.5	2.1%	0	0.0	0.0%
John W. Egan Co., Inc.	40.0	1	0	0.0	0.0%	0	0.0	0.0%	0	0.0	0.0%
JP Obelisk, Inc.	1,245.0	13	5	576.0	46.3%	0	0.0	0.0%	0	0.0	0.0%
JR Vinagro Corp.	2,657.0	25	5	223.0	8.4%	1	120.0	4.5%	1	122.0	4.6%
K&H Electrical Systems, Inc.	12,275.5	30	8	3,050.5	24.9%	1	457.5	3.7%	1	120.5	1.0%
K&K Acoustical Ceilings, Inc.	5,563.0	9	2	945.0	17.0%	2	717.0	12.9%	1	1,460.0	26.2%
K&M Fire Protection Services, Inc. - Payroll	79,345.0	63	10	15,430.0	19.4%	2	3,636.5	4.6%	6	7,951.5	10.0%
K. DaPonte Construction Corp.	720.0	18	1	72.0	10.0%	1	32.0	4.4%	0	0.0	0.0%
K.O. Stone Inc. (MBE)	632.0	11	10	616.0	97.5%	5	328.0	51.9%	0	0.0	0.0%
Kenneth Castellucci & Associates, Inc.	5,885.5	21	1	152.0	2.6%	0	0.0	0.0%	0	0.0	0.0%
Killea Equipment	501.0	3	2	305.0	60.9%	0	0.0	0.0%	0	0.0	0.0%
KM Kelly, Inc.	24,799.3	26	6	4,684.0	18.9%	4	3,350.3	13.5%	2	1,817.0	7.3%
L.J. Mishel Electrical Contractors, Inc.	96.0	2	0	0.0	0.0%	0	0.0	0.0%	1	48.0	50.0%
Lan-Tel Communications, Inc.	13,671.0	16	6	5,681.0	41.6%	1	1,479.0	10.8%	2	1,868.0	13.7%
Leading Way Construction Co., Inc.	96.0	6	0	0.0	0.0%	0	0.0	0.0%	0	0.0	0.0%
Liberty Construction Services	409,686.0	384	118	118,350.0	28.9%	33	36,634.0	8.9%	8	7,732.0	1.9%
Liberty Equipment and Supply	13,507.0	42	8	2,531.0	18.7%	3	679.0	5.0%	1	1,217.0	9.0%
Lockwood Remediation	32.0	1	0	0.0	0.0%	0	0.0	0.0%	0	0.0	0.0%
Longden Company Inc.	1,035.0	7	1	191.0	18.5%	0	0.0	0.0%	2	248.0	24.0%
Lund Rebar Services, Inc.	108,783.5	128	59	50,249.0	46.2%	11	7,536.0	6.9%	6	8,375.0	7.7%
M.L. McDonald Sales Company, LLC	82,947.0	121	25	12,819.0	15.5%	7	4,525.0	5.5%	5	5,655.0	6.8%
Marguerite Concrete, Inc.	587.0	34	9	166.0	28.3%	1	8.0	1.4%	2	32.0	5.5%
Marr Equipment Corp.	202.0	9	0	0.0	0.0%	0	0.0	0.0%	1	3.0	1.5%
Mass Bay Electrical Corp.	3,916.5	46	1	201.0	5.1%	1	155.0	4.0%	0	0.0	0.0%
Massey's Plate Glass Aluminum, Inc.	2,376.0	15	4	839.0	35.3%	1	192.0	8.1%	1	303.0	12.8%
Maxim Crane Works, L.P.	47,040.5	73	14	11,231.5	23.9%	3	3,756.5	8.0%	5	6,816.5	14.5%
McCusker-Gill, Inc.	73,798.0	101	19	24,125.0	32.7%	2	4,080.0	5.5%	8	11,240.0	15.2%

CONTRACTOR	SEPTEMBER 2018											PROJECT TO DATE										
	Total Hours	Total # Workers	MINORITY - Goal: 15.3%			FEMALE - Goal: 6.9%			VETERAN - Goal: 3.0%			Total Hours	Total # Workers	MINORITY - Goal: 15.3%			FEMALE - Goal: 6.9%			VETERAN - Goal: 3.0%		
			# Workers	Hours	%	# Workers	Hours	%	# Workers	Hours	%			# Workers	Hours	%	# Workers	Hours	%	# Workers	Hours	%
McDonald Electrical Corp.	3,228.0	51	7	440.0	13.6%	4	200.0	6.2%	7	430.0	13.3%	42,661.0	74	12	5,263.0	12.3%	7	1,982.0	4.6%	8	4,227.0	9.9%
McGregor Industries, Inc.	907.5	9	1	110.0	12.1%	2	225.5	24.8%	0	0.0	0.0%	19,017.0	33	7	1,922.5	10.1%	2	3,072.0	16.2%	3	1,864.5	9.8%
McPhee Electric Ltd.	2,194.5	21	3	279.0	12.7%	2	171.0	7.8%	3	351.0	16.0%	19,838.5	35	5	2,068.5	10.4%	3	613.0	3.1%	4	2,631.0	13.3%
Melo's Rodbusters, Inc. (WBE)	0.0	0	0	0.0	0.0%	0	0.0	0.0%	0	0.0	0.0%	13,566.5	22	11	7,113.0	52.4%	0	0.0	0.0%	1	1,820.0	13.4%
Midnight Iron Construction Management Inc.	0.0	0	0	0.0	0.0%	0	0.0	0.0%	0	0.0	0.0%	32.0	1	0	0.0	0.0%	0	0.0	0.0%	0	0.0	0.0%
Mitsubishi Electric US, Inc.	0.0	0	0	0.0	0.0%	0	0.0	0.0%	0	0.0	0.0%	5,886.0	7	2	2,119.0	36.0%	1	943.0	16.0%	4	3,355.0	57.0%
MON Landscaping Inc.	0.0	0	0	0.0	0.0%	0	0.0	0.0%	0	0.0	0.0%	416.0	15	1	16.0	3.8%	0	0.0	0.0%	0	0.0	0.0%
Moretrench	0.0	0	0	0.0	0.0%	0	0.0	0.0%	0	0.0	0.0%	19,856.0	38	11	5,850.0	29.5%	3	302.0	1.5%	2	1,335.5	6.7%
MTK Construction Services, Inc.	0.0	0	0	0.0	0.0%	0	0.0	0.0%	0	0.0	0.0%	514.0	12	8	396.0	77.0%	0	0.0	0.0%	0	0.0	0.0%
NER Construction Mgmt	585.5	8	0	0.0	0.0%	0	0.0	0.0%	0	0.0	0.0%	7,878.5	22	1	48.0	0.6%	0	0.0	0.0%	1	48.0	0.6%
New England Finish Systems	0.0	0	0	0.0	0.0%	0	0.0	0.0%	0	0.0	0.0%	473.5	10	1	44.0	9.3%	2	6.0	1.3%	0	0.0	0.0%
New England Installation, Inc.	0.0	0	0	0.0	0.0%	0	0.0	0.0%	0	0.0	0.0%	818.5	8	1	141.0	17.2%	0	0.0	0.0%	1	106.5	13.0%
NewRoads Environmental	0.0	0	0	0.0	0.0%	0	0.0	0.0%	0	0.0	0.0%	7,929.5	42	40	7,874.5	99.3%	4	1,412.0	17.8%	1	172.0	2.2%
Newtech Installation USA inc	2,634.5	23	3	350.0	13.3%	1	36.0	1.4%	2	148.0	5.6%	10,866.3	35	6	1,244.5	11.5%	1	44.0	0.4%	2	284.0	2.6%
North East Foam Solutions, Inc.	152.0	3	0	0.0	0.0%	1	72.0	47.4%	1	72.0	47.4%	5,563.0	10	4	1,217.0	21.9%	1	1,524.0	27.4%	3	2,240.0	40.3%
Northeast Interior aka Artisan Millwork	364.0	4	2	152.0	41.8%	0	0.0	0.0%	1	112.0	30.8%	5,269.5	10	3	1,854.0	35.2%	1	568.0	10.8%	1	1,067.5	20.3%
NorthStar Contracting Group, Inc	0.0	0	0	0.0	0.0%	0	0.0	0.0%	0	0.0	0.0%	37.0	2	1	12.0	32.4%	0	0.0	0.0%	0	0.0	0.0%
Oasis Shower Doors	232.0	6	0	0.0	0.0%	1	40.0	17.2%	0	0.0	0.0%	1,755.0	8	0	0.0	0.0%	1	222.0	12.6%	0	0.0	0.0%
Otis Elevator Company	2,483.8	33	4	327.0	13.2%	3	235.3	9.5%	0	0.0	0.0%	43,658.8	69	6	3,357.3	7.7%	5	1,443.0	3.3%	3	1,517.8	3.5%
P.J. Dionne Company, Inc.	0.0	0	0	0.0	0.0%	0	0.0	0.0%	0	0.0	0.0%	1,266.5	6	1	184.0	14.5%	1	120.0	9.5%	0	0.0	0.0%
P.J. Spillane Company, Inc. (WBE)	825.0	13	1	101.0	12.2%	1	119.0	14.4%	0	0.0	0.0%	12,645.5	46	10	2,542.0	20.1%	2	1,150.0	9.1%	1	36.0	0.3%
Peak Mechanical Services	904.0	11	3	248.0	27.4%	0	0.0	0.0%	1	112.0	12.4%	9,238.0	18	5	3,645.0	39.5%	0	0.0	0.0%	3	812.0	8.8%
Pick Crane Service, Inc.	0.0	0	0	0.0	0.0%	0	0.0	0.0%	0	0.0	0.0%	110.5	3	0	0.0	0.0%	0	0.0	0.0%	0	0.0	0.0%
Port Morris Tile & Marble Boston LP	4,010.0	46	9	816.0	20.3%	4	344.0	8.6%	2	216.0	5.4%	22,166.5	66	9	4,301.0	19.4%	4	1,617.0	7.3%	3	2,202.0	9.9%
PSN Construction Inc.	64.0	1	1	64.0	100.0%	0	0.0	0.0%	0	0.0	0.0%	1,028.3	2	2	1,028.3	100.0%	0	0.0	0.0%	0	0.0	0.0%
Quality Air Metals, Inc. (WBE)	784.0	7	2	207.0	26.4%	1	98.0	12.5%	0	0.0	0.0%	15,057.0	13	3	3,671.0	24.4%	1	1,455.0	9.7%	1	457.0	3.0%
R.J. Cobb LTD	0.0	0	0	0.0	0.0%	0	0.0	0.0%	0	0.0	0.0%	48.0	2	0	0.0	0.0%	0	0.0	0.0%	0	0.0	0.0%
Rapid Flow Inc.	0.0	0	0	0.0	0.0%	0	0.0	0.0%	0	0.0	0.0%	1,572.0	2	0	0.0	0.0%	0	0.0	0.0%	1	8.0	0.5%
Regis Steel Corporation (MBE)	0.0	0	0	0.0	0.0%	0	0.0	0.0%	0	0.0	0.0%	6,283.5	24	6	1,415.5	22.5%	3	613.0	9.8%	0	0.0	0.0%
Richard W. Reid Electric Company Inc.	0.0	0	0	0.0	0.0%	0	0.0	0.0%	0	0.0	0.0%	34.0	3	2	16.0	47.1%	0	0.0	0.0%	0	0.0	0.0%
Roadsafe Traffic Systems, Inc	0.0	0	0	0.0	0.0%	0	0.0	0.0%	0	0.0	0.0%	45.0	4	2	17.0	37.8%	0	0.0	0.0%	0	0.0	0.0%
Roman Iron Works, Inc.	8.0	2	1	4.0	50.0%	0	0.0	0.0%	0	0.0	0.0%	182.0	3	1	102.0	56.0%	0	0.0	0.0%	0	0.0	0.0%
S&A Cranes LLC	0.0	0	0	0.0	0.0%	0	0.0	0.0%	0	0.0	0.0%	62.5	7	1	10.5	16.8%	0	0.0	0.0%	1	8.0	12.8%
S&F Concrete Contractors, Inc.	689.5	24	4	280.0	40.6%	0	0.0	0.0%	1	48.0	7.0%	420,899.0	406	102	129,266.0	30.7%	17	23,739.0	5.6%	13	19,878.0	4.7%
Silverback Construction Inc.	0.0	0	0	0.0	0.0%	0	0.0	0.0%	0	0.0	0.0%	416.0	18	1	27.0	6.5%	0	0.0	0.0%	0	0.0	0.0%
Skylight Consultants of America, Inc.	346.0	4	0	0.0	0.0%	0	0.0	0.0%	0	0.0	0.0%	1,513.5	13	1	64.0	4.2%	0	0.0	0.0%	0	0.0	0.0%
SOEP Painting Corp.	3,382.0	40	16	1,352.0	40.0%	6	504.0	14.9%	1	120.0	3.5%	16,093.5	53	20	6,320.0	39.3%	9	2,214.0	13.8%	1	434.0	2.7%
SOS Corporation (WBE)	358.0	6	3	206.0	57.5%	4	138.0	38.5%	0	0.0	0.0%	1,838.0	15	7	563.0	30.6%	7	566.0	30.8%	0	0.0	0.0%
SPS New England, Inc.	2,170.5	19	4	527.0	24.3%	2	279.5	12.9%	0	0.0	0.0%	46,796.5	79	17	8,158.5	17.4%	6	3,424.0	7.3%	1	424.0	0.9%
Stafford Smith	0.0	0	0	0.0	0.0%	0	0.0	0.0%	0	0.0	0.0%	0.0	0	0	0.0	0.0%	0	0.0	0.0%	0	0.0	0.0%
Stanley & Sons, Inc.	400.0	12	4	144.0	36.0%	2	40.0	10.0%	2	72.0	18.0%	5,712.5	28	9	958.5	16.8%	2	706.0	12.4%	4	1,097.0	19.2%
Structures Derek International SA	0.0	0	0	0.0	0.0%	0	0.0	0.0%	0	0.0	0.0%	1,520.5	8	3	704.5	46.3%	0	0.0	0.0%	0	0.0	0.0%
Sullivan & McLaughlin Co., Inc.	108.0	1	0	0.0	0.0%	0	0.0	0.0%	0	0.0	0.0%	3,677.0	10	1	873.0	23.7%	2	945.0	25.7%	1	681.0	18.5%
Sunrise Erectors, Inc.	1,694.5	22	3	288.0	17.0%	2	158.0	9.3%	1	94.0	5.5%	44,492.0	79	12	5,089.5	11.4%	6	2,360.5	5.3%	4	3,330.5	7.5%
Sweeney Drywall Finishes Corp	514.0	8	2	120.0	23.3%	0	0.0	0.0%	1	2.0	0.4%	2,506.0	22	8	881.0	35.2%	0	0.0	0.0%	1	32.0	1.3%
T & T Steel Erectors, Inc. (MBE)	148.0	4	1	56.0	37.8%	1	60.0	40.5%	0	0.0	0.0%	807.0	6	1	275.0	34.1%	1	218.0	27.0%	0	0.0	0.0%
T&T Electrical Contractors, Inc.	9,061.0	92	13	1,307.0	14.4%	5	457.0	5.0%	4	382.0	4.2%	110,954.5	151	20	17,189.5	15.5%	8	3,758.0	3.4%	6	5,589.5	5.0%
Tavares LLC (MBE)	2,560.0	30	14	1,286.0	50.2%	1	96.0	3.8%	1	115.0	4.5%	24,726.5	50	21	16,813.5	68.0%	1	1,717.0	6.9%	1	1,820.0	7.4%
TCI Installations Inc. (WBE)	112.0	4	0	0.0	0.0%	0	0.0	0.0%	1	40.0	35.7%	2,576.0	8	1	416.0	16.1%	0	0.0	0.0%	1	666.0	25.9%

CONTRACTOR	SEPTEMBER 2018										
	Total Hours	Total # Workers	MINORITY - Goal: 15.3%			FEMALE - Goal: 6.9%			VETERAN - Goal: 3.0%		
			# Workers	Hours	%	# Workers	Hours	%	# Workers	Hours	%
The Railroad Associates Corporation	0.0	0	0	0.0	0.0%	0	0.0	0.0%	0	0.0	0.0%
The Welch Corporation	0.0	0	0	0.0	0.0%	0	0.0	0.0%	0	0.0	0.0%
Thermo-Dynamics International, Inc. (VBE)	270.0	6	2	32.0	11.9%	1	16.0	5.9%	1	16.0	5.9%
Titan Roofing, Inc. (MVBE)	2,393.8	36	14	762.0	31.8%	2	115.0	4.8%	1	106.0	4.4%
Total Mechanical Service Corp. (MBE)	0.0	0	0	0.0	0.0%	0	0.0	0.0%	0	0.0	0.0%
TREVIICOS CORPORATION	0.0	0	0	0.0	0.0%	0	0.0	0.0%	0	0.0	0.0%
Triboro Crane & Rigging Services	0.0	0	0	0.0	0.0%	0	0.0	0.0%	0	0.0	0.0%
Union Temporary Services, Inc.	398.0	5	1	78.0	19.6%	1	78.0	19.6%	0	0.0	0.0%
Unistrut International Corp.	336.0	6	1	56.0	16.7%	1	56.0	16.7%	1	56.0	16.7%
United Elevator Company (WBE)	124.0	2	0	0.0	0.0%	0	0.0	0.0%	0	0.0	0.0%
Universal Automation & Mechanical Services	280.0	4	0	0.0	0.0%	0	0.0	0.0%	0	0.0	0.0%
Urban Insulation Inc. (WBE)	607.5	6	3	335.5	55.2%	0	0.0	0.0%	0	0.0	0.0%
UTEC Constructors LLC	0.0	0	0	0.0	0.0%	0	0.0	0.0%	0	0.0	0.0%
Vanguard Plumbing & Mechanical LLC	0.0	0	0	0.0	0.0%	0	0.0	0.0%	0	0.0	0.0%
Vynorius Piledriving Inc.	0.0	0	0	0.0	0.0%	0	0.0	0.0%	0	0.0	0.0%
Wallco Installations, LLC	0.0	0	0	0.0	0.0%	0	0.0	0.0%	0	0.0	0.0%
WES Construction Corp	0.0	0	0	0.0	0.0%	0	0.0	0.0%	0	0.0	0.0%
Whitehawk Construction Services, Inc.	0.0	0	0	0.0	0.0%	0	0.0	0.0%	0	0.0	0.0%
Wood & Wire Fence Co. Inc. (MBE)	0.0	0	0	0.0	0.0%	0	0.0	0.0%	0	0.0	0.0%
TOTAL	144,113.8	1,856	476	38,520.8	26.7%	154	11,946.3	8.3%	87	6,822.8	4.7%

CONTRACTOR	PROJECT TO DATE										
	Total Hours	Total # Workers	MINORITY - Goal: 15.3%			FEMALE - Goal: 6.9%			VETERAN - Goal: 3.0%		
			# Workers	Hours	%	# Workers	Hours	%	# Workers	Hours	%
The Railroad Associates Corporation	68.5	3	0	0.0	0.0%	0	0.0	0.0%	0	0.0	0.0%
The Welch Corporation	11,582.5	21	2	1,308.0	11.3%	3	1,057.0	9.1%	2	1,225.0	10.6%
Thermo-Dynamics International, Inc. (VBE)	13,088.5	35	10	3,151.0	24.1%	2	686.5	5.2%	1	1,579.0	12.1%
Titan Roofing, Inc. (MVBE)	47,464.0	100	26	13,667.0	28.8%	3	4,174.5	8.8%	4	3,582.0	7.5%
Total Mechanical Service Corp. (MBE)	96.0	3	0	0.0	0.0%	0	0.0	0.0%	0	0.0	0.0%
TREVIICOS CORPORATION	60,534.5	89	24	16,023.0	26.5%	7	4,090.5	6.8%	3	2,630.0	4.3%
Triboro Crane & Rigging Services	1,128.0	9	0	0.0	0.0%	0	0.0	0.0%	0	0.0	0.0%
Union Temporary Services, Inc.	3,611.5	7	1	214.0	5.9%	1	214.0	5.9%	0	0.0	0.0%
Unistrut International Corp.	14,980.8	22	5	5,468.5	36.5%	2	1,077.5	7.2%	1	1,574.0	10.5%
United Elevator Company (WBE)	124.0	2	0	0.0	0.0%	0	0.0	0.0%	0	0.0	0.0%
Universal Automation & Mechanical Services	1,041.0	8	1	8.0	0.8%	0	0.0	0.0%	0	0.0	0.0%
Urban Insulation Inc. (WBE)	9,653.0	20	5	2,330.0	24.1%	2	1,267.5	13.1%	2	959.0	9.9%
UTEC Constructors LLC	688.0	9	1	116.0	16.9%	0	0.0	0.0%	0	0.0	0.0%
Vanguard Plumbing & Mechanical LLC	312.0	2	0	0.0	0.0%	0	0.0	0.0%	0	0.0	0.0%
Vynorius Piledriving Inc.	13,626.3	32	3	1,810.3	13.3%	3	657.5	4.8%	4	1,592.0	11.7%
Wallco Installations, LLC	662.0	6	0	0.0	0.0%	0	0.0	0.0%	0	0.0	0.0%
WES Construction Corp	4,134.0	15	1	356.5	8.6%	1	398.0	9.6%	0	0.0	0.0%
Whitehawk Construction Services, Inc.	6.0	1	0	0.0	0.0%	0	0.0	0.0%	0	0.0	0.0%
Wood & Wire Fence Co. Inc. (MBE)	8.0	2	1	4.0	50.0%	0	0.0	0.0%	0	0.0	0.0%
TOTAL	3,984,216.2	6,020	1,399	994,890.5	25.0%	375	275,838.3	6.9%	275	245,460.5	6.2%

SUMMARY PERFORMANCE: PROJECT TO DATE

	# Workers	Hours	Goal	Project to Date
Minority	1,399	994,890.5	15.3%	25.0%
Female	375	275,838.3	6.9%	6.9%
Veteran	275	245,460.5	3.0%	6.2%

Workforce Summary Report

ENCORE BOSTON HARBOR
Construction Workforce Diversity
09/30/2018

09/01/2015 -

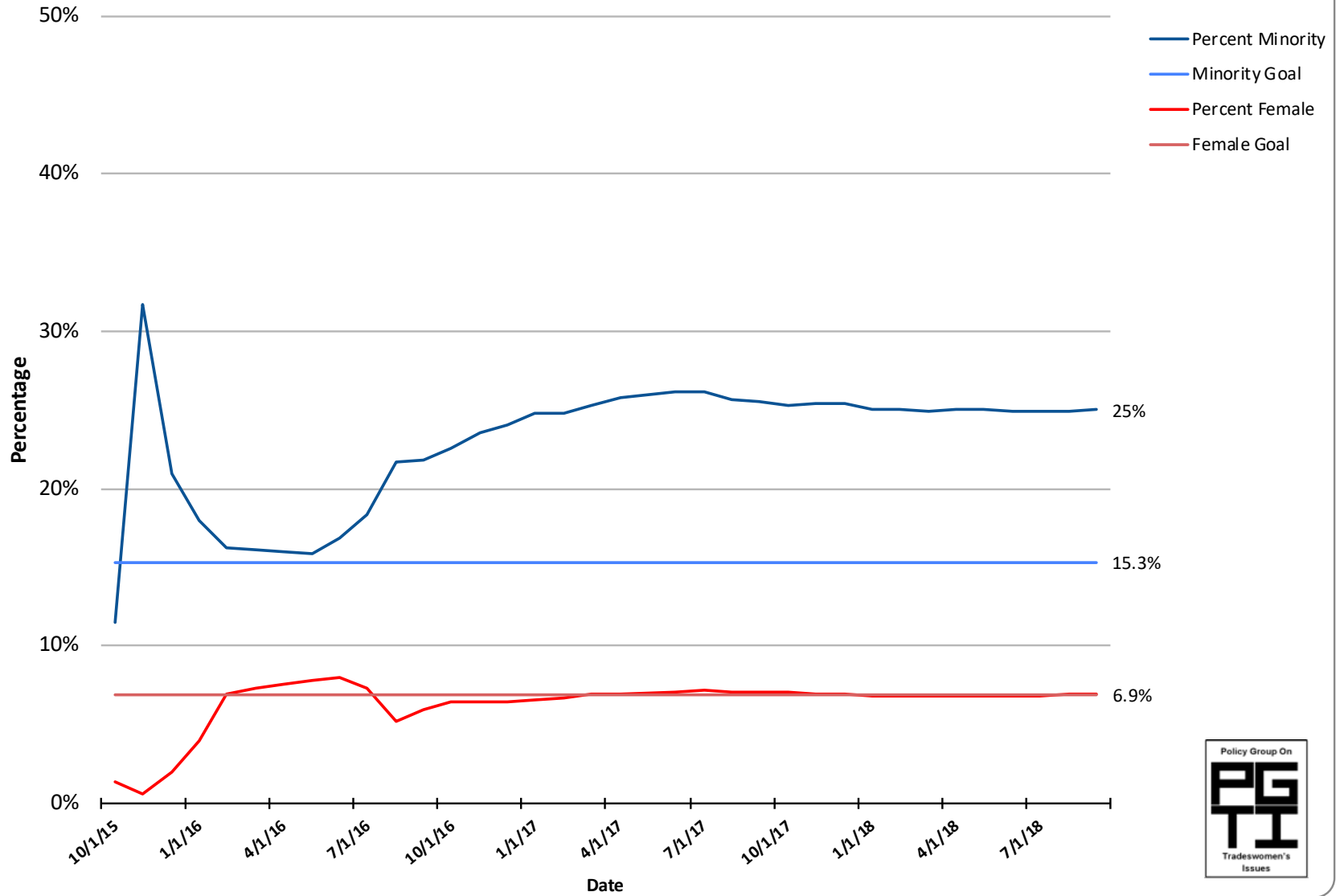
LOCAL TRADE UNION	SEPTEMBER 2018										
	Total Hours	Total # Workers	MINORITY - Goal: 15.3%			FEMALE - Goal: 6.9%			VETERAN - Goal: 3.0%		
			# Workers	Hours	%	# Workers	Hours	%	# Workers	Hours	%
Asbestos Workers Local 6	2,908.5	41	9	594.5	20.4%	3	84.0	2.9%	4	178.0	6.1%
Boilermakers Local 29	122.0	1	0	0.0	0.0%	0	0.0	0.0%	0	0.0	0.0%
Bricklayers Local 3 Eastern Mass.	10,214.5	142	32	2,451.0	24.0%	9	622.5	6.1%	4	322.0	3.2%
Carpenters, New England	31,975.5	361	95	8,180.5	25.6%	25	1,940.5	6.1%	19	1,588.5	4.2%
Electricians Local 103 I.B.E.W.	24,623.5	370	55	3,810.0	15.5%	28	1,718.5	7.0%	26	1,841.5	7.5%
Electricians Local 104 I.B.E.W.	8.5	1	0	0.0	0.0%	0	0.0	0.0%	0	0.0	0.0%
Elevator Constructors Local 4	2,607.8	35	4	327.0	12.5%	3	235.3	9.0%	0	0.0	0.0%
Floorcoverers Local 2168	2,661.5	43	23	1,353.5	50.9%	2	121.5	4.6%	0	0.0	0.0%
Iron Workers Local 7	6,061.5	86	17	1,220.5	20.1%	14	1,157.5	19.1%	4	390.0	6.4%
Massachusetts Laborers	24,328.0	284	103	8,828.0	36.3%	37	3,437.5	14.1%	11	896.5	3.7%
Millwrights Local 1121	11.0	1	0	0.0	0.0%	0	0.0	0.0%	0	0.0	0.0%
Operating Engineers Local 4	4,171.5	54	6	651.0	15.6%	1	48.5	1.2%	1	8.0	0.2%
Operating Engineers Local 98	144.3	2	0	0.0	0.0%	0	0.0	0.0%	0	0.0	0.0%
Painters & Allied Trades D.C. #35	13,724.0	166	67	6,308.0	46.0%	16	1,193.5	8.7%	3	278.5	2.0%
Piledrivers Local 56	383.5	7	0	0.0	0.0%	0	0.0	0.0%	0	0.0	0.0%
Pipe Fitters Local 537	5,136.0	51	12	1,119.0	21.8%	5	422.0	8.2%	4	323.0	6.3%
Plasterers & Cement Masons Local	1,045.5	30	5	119.0	11.4%	0	0.0	0.0%	2	16.0	1.5%
Plumbers & Gasfitters Local 12	4,764.0	51	9	887.0	18.6%	4	385.0	8.1%	3	356.0	7.5%
Roofers & Slaters Local 33	2,382.5	39	20	1,006.5	42.2%	2	115.0	4.8%	1	106.0	4.4%
Sheet Metal Workers Local 17	4,917.3	64	14	1,312.3	26.7%	3	337.0	6.9%	4	451.8	9.2%
Sheet Metal Workers Local 63	0.0	0	0	0.0	0.0%	0	0.0	0.0%	0	0.0	0.0%
Sprinkler Fitters Local 550	1,923.0	27	5	353.0	18.4%	2	128.0	6.7%	1	67.0	3.5%
Teamsters Local 25	0.0	0	0	0.0	0.0%	0	0.0	0.0%	0	0.0	0.0%
Woodframe Local 723	0.0	0	0	0.0	0.0%	0	0.0	0.0%	0	0.0	0.0%
Total	144,113.8	1,856	476	38,520.8	26.7%	154	11,946.3	8.3%	87	6,822.8	4.7%

LOCAL TRADE UNION	PROJECT TO DATE										
	Total Hours	Total # Workers	MINORITY - Goal: 15.3%			FEMALE - Goal: 6.9%			VETERAN - Goal: 3.0%		
			# Workers	Hours	%	# Workers	Hours	%	# Workers	Hours	%
Asbestos Workers Local 6	52,697.5	119	27	9,042.0	17.2%	9	2,834.0	5.4%	8	4,761.0	9.0%
Boilermakers Local 29	1,744.0	2	0	0.0	0.0%	0	0.0	0.0%	0	0.0	0.0%
Bricklayers Local 3 Eastern Mass.	102,732.5	259	48	21,314.0	20.7%	11	4,893.0	4.8%	9	4,435.5	4.3%
Carpenters, New England	711,396.8	911	255	213,676.5	30.0%	55	42,215.0	5.9%	41	39,262.8	5.5%
Electricians Local 103 I.B.E.W.	819,901.3	914	147	145,595.3	17.8%	58	53,920.3	6.6%	48	48,912.0	6.0%
Electricians Local 104 I.B.E.W.	1,427.0	27	1	116.0	8.1%	1	155.0	10.9%	0	0.0	0.0%
Elevator Constructors Local 4	51,843.0	89	9	6,053.5	11.7%	6	2,386.0	4.6%	10	5,536.8	10.7%
Floorcoverers Local 2168	9,955.5	52	29	4,457.5	44.8%	2	1,063.5	10.7%	0	0.0	0.0%
Iron Workers Local 7	408,543.2	692	176	110,786.5	27.1%	47	27,074.0	6.6%	31	31,993.0	7.8%
Massachusetts Laborers	808,587.7	1221	379	265,150.8	32.8%	103	78,887.0	9.8%	37	29,127.5	3.6%
Millwrights Local 1121	269.0	4	1	86.0	32.0%	0	0.0	0.0%	0	0.0	0.0%
Operating Engineers Local 4	273,617.5	461	59	42,528.0	15.5%	16	14,268.0	5.2%	27	27,098.5	9.9%
Operating Engineers Local 98	240.0	2	0	0.0	0.0%	0	0.0	0.0%	0	0.0	0.0%
Painters & Allied Trades D.C. #35	130,147.0	261	100	53,520.0	41.1%	21	11,800.0	9.1%	5	3,579.5	2.8%
Piledrivers Local 56	44,014.0	106	9	5,218.5	11.9%	8	1,775.0	4.0%	9	5,113.0	11.6%
Pipe Fitters Local 537	107,539.0	120	16	19,746.5	18.4%	7	9,104.0	8.5%	10	7,690.0	7.2%
Plasterers & Cement Masons Local	63,697.5	212	47	11,869.0	18.6%	7	1,451.0	2.3%	5	245.0	0.4%
Plumbers & Gasfitters Local 12	163,851.5	218	29	26,511.5	16.2%	16	10,666.5	6.5%	13	14,008.0	8.5%
Roofers & Slaters Local 33	45,679.8	107	33	15,070.0	33.0%	3	4,174.5	9.1%	4	3,582.0	7.8%
Sheet Metal Workers Local 17	106,744.5	167	24	28,719.0	26.9%	3	5,535.0	5.2%	10	12,153.5	11.4%
Sheet Metal Workers Local 63	20.0	2	0	0.0	0.0%	0	0.0	0.0%	0	0.0	0.0%
Sprinkler Fitters Local 550	79,345.0	63	10	15,430.0	19.4%	2	3,636.5	4.6%	6	7,951.5	10.0%
Teamsters Local 25	215.0	10	0	0.0	0.0%	0	0.0	0.0%	2	11.0	5.1%
Woodframe Local 723	8.0	1	0	0.0	0.0%	0	0.0	0.0%	0	0.0	0.0%
Total	3,984,216.2	6,020	1,399	994,890.5	25.0%	375	275,838.3	6.9%	275	245,460.5	6.2%

SUMMARY PERFORMANCE: PROJECT TO DATE

	# Workers	Hours	Goal	Project to Date
Minority	1,399	994,890.5	15.3%	25.0%
Female	375	275,838.3	6.9%	6.9%
Veteran	275	245,460.5	3.0%	6.2%

Encore Everett: Totals for Access and Opportunity Goals as of 9/30/2018 -- 3,984,216.2 Hours Completed



Access and Opportunity Committee

October 9, 2018



Agenda

1. Construction Workforce
2. Design & Construction Payments
3. Design Commitments
4. Construction Commitments



Construction Workforce



WORKFORCE DIVERSITY STATISTICS - UNION

AS OF SEPTEMBER 30, 2018

Group	Project Goals	Project To Date %
Women	6.90%	7.53%
Minority	15.30%	22.49%
Veteran	8.00%	8.33%

Notes:

(1) Statistics include all workforce reports that were received by MGM as of September 30, 2018.

WORKFORCE DIVERSITY STATISTICS - TOTAL

AS OF SEPTEMBER 30, 2018

Group	Project Goals	Project To Date %
Women	6.90%	8.55%
Minority	15.30%	21.78%
Veteran	8.00%	8.71%

Notes:

- (1) Statistics include all workforce reports that were received by MGM as of September 30, 2018.
- (2) The Diversity plan approved by the MGC allows reporting to include hours allocated to multiple diversity categories. 5.23% of total workforce hours are included in two of the diversity categories and 0.29% of total workforce hours are included in three diversity categories.
- (3) While this is not a reporting requirement of the approved diversity plan, the total hours worked through 3rd quarter 2018 is as follows:
 - Approximately 35% are from Springfield/ Surrounding Communities
 - Approximately 55% are from Western Massachusetts
 - Approximately 71% are from Massachusetts

Design & Construction Payments



DESIGN & CONSTRUCTION PAYMENTS

AS OF AUGUST 31, 2018

Group	Project Goals	Payments	Variance	Company Count	Value
WBE	10.0%	20.5%	10.5%	80	\$113.1M
MBE	5.0%	7.4%	2.4%	49	\$41.0M
VBE	2.0%	6.3%	4.3%	25	\$34.7M

Notes:

(1) Total Payments through August 31, 2018 are \$552.3M. Total payments is inclusive of \$112.7M in plan approved exemptions.

(2) Includes companies that are certified with the following agencies:

- MBE - Massachusetts Supplier Diversity Office or Greater New England Minority Supplier Development Council.
- WBE - Massachusetts Supplier Diversity Office or Women's Business Enterprise National Council.
- VBE - United States Department of Veteran Affairs or Massachusetts Gaming Commission.

WBE = Woman-owned Business Enterprise; MBE = Minority-owned Business Enterprise; VBE = Veteran-owned Business Enterprise.

Design & Construction Commitments



DESIGN & CONSTRUCTION COMMITMENTS

AS OF SEPTEMBER 30, 2018

Group	Project Goals	Commitments	Variance	Company Count	Value
WBE	10.0%	20.9%	10.9%	82	\$127.8M
MBE	5.0%	7.8%	2.8%	49	\$47.6M
VBE	2.0%	6.5%	4.5%	25	\$39.5M

Notes:

(1) Total Commitments through September 30, 2018 are \$611.3M.

(2) Includes companies that are certified with the following agencies:

- MBE - Massachusetts Supplier Diversity Office or Greater New England Minority Supplier Development Council.
- WBE - Massachusetts Supplier Diversity Office or Women's Business Enterprise National Council.
- VBE - United States Department of Veteran Affairs or Massachusetts Gaming Commission.

WBE = Woman-owned Business Enterprise; MBE = Minority-owned Business Enterprise; VBE = Veteran-owned Business Enterprise.

Design & Consulting Commitments



DESIGN & CONSULTING COMMITMENTS

AS OF SEPTEMBER 30, 2018

Group	Project Goals	Commitments	Company Count	Value
WBE	10.0%	16.4%	22	\$8.1M
MBE	5.0%	13.1%	19	\$6.5M
VBE	2.0%	6.6%	3	\$3.3M

Notes:

(1) Total Commitments through September 30, 2018 are \$49.6M.

(2) Includes companies that are certified with the following agencies:

- MBE - Massachusetts Supplier Diversity Office or Greater New England Minority Supplier Development Council.
- WBE - Massachusetts Supplier Diversity Office or Women's Business Enterprise National Council.
- VBE - United States Department of Veteran Affairs or Massachusetts Gaming Commission.

WBE = Woman-owned Business Enterprise; MBE = Minority-owned Business Enterprise; VBE = Veteran-owned Business Enterprise.

DESIGN & CONSULTING COMMITMENTS

AS OF SEPTEMBER 30, 2018

Ref	Company	Scope	Location	Diversity Status
1	AAC Investments, LLC	Interior Design	Los Angeles, CA	WBE
2	AFO Project Consulting, LLC	Construction Consulting	Las Vegas, NV	VBE
3	Akal Engineering, Inc.	Project Commissioning - MEP Services	Boylston, MA	MBE
4	American Project Management	Signage Installation Management	Las Vegas, NV	MBE
5	Andelman & Lelek Engineering, Inc.	Energy Modeling	Norwood, MA	WBE
6	Blackford, LLC	Construction Management	Las Vegas, NV	VBE
7	Black Hawk Group	Consulting Engineer Services	Philadelphia, PA	MBE
8	C&C Consulting Engineers, LLC	Structural Peer Review	Allston, MA	MBE
9	Calvin Consulting Services, LLC	Construction Consulting	Las Vegas, NV	WBE
10	Clayton, LLC	Sign Procurement and Installation	Woburn, MA	MBE
11	Communications for Design LLC	Design and Project Management Support Services	Northfield, MN	WBE
12	Convergent Technologies	Acoustics/ Audio Visual/ IT/ Low Voltage	Lockport, NY	WBE
13	Copley Wolff Design Group, Inc.	Full Landscape Architectural Services	Boston, MA	WBE
14	Desert Construction Consulting, Ltd	Estimating and Contractor Bidding Services	Henderson, NV	MBE
15	Desman, Inc.	Parking Garage Bridging Documents (LOA)	Boston, MA	MBE

Notes:

- (1) Includes companies that are certified with the following agencies:
- MBE - Massachusetts Supplier Diversity Office or Greater New England Minority Supplier Development Council.
 - WBE - Massachusetts Supplier Diversity Office or Women's Business Enterprise National Council.
 - VBE - United States Department of Veteran Affairs or Massachusetts Gaming Commission.
- (2) Green highlighted companies have been paid as of August 31, 2018.
- WBE = Woman-owned Business Enterprise; MBE = Minority-owned Business Enterprise; VBE = Veteran-owned Business Enterprise.

DESIGN & CONSULTING COMMITMENTS

AS OF SEPTEMBER 30, 2018

Ref	Company	Scope	Location	Diversity Status
16	Dietz & Company Architects, Inc.	Full Service Architecture and Interior Design	Springfield, MA	WBE
17	Engineers Design Group, Inc.	Structural Engineering Consulting Services	Malden, MA	MBE
18	Erin Chrusciel Photography, LLC	Photography	East Longmeadow, MA	WBE
19	Fernandez & Associates	Fire Protection Design and Code Consulting Services	Byfield, MA	MBE
20	Hamilton Anderson Associates, Inc.	Architectural Services	Detroit, MI	MBE
21	Hi-Rise Graphics, Inc.	Signage Design	Lawrence, MA	MBE
22	Hyde Business Services, LLC	Permit and Community Commitment Coordination	Medina, MN	WBE
23	Independent Design, LLC	Historical MOA Research/ Signage Design	Quincy, MA	WBE
24	JoAnn Jones	Administrative Services	Henderson, NV	WBE
25	KLM Revolution	Project Management	Henderson, NV	WBE
26	Marshall Moya Design, LLC	Architectural Services	Washington, DC	MBE
27	Maryann Thompson Architects	Architectural Design Services	Henderson, NV	WBE
28	MCLA, Inc.	Lighting	Washington, DC	WBE
29	Moya Design Partners	Interior Design	Henderson, NV	WBE
30	Nitsch Engineering, Inc.	Engineering Services	Boston, MA	WBE

Notes:

- (1) Includes companies that are certified with the following agencies:
- MBE - Massachusetts Supplier Diversity Office or Greater New England Minority Supplier Development Council.
 - WBE - Massachusetts Supplier Diversity Office or Women's Business Enterprise National Council.
 - VBE - United States Department of Veteran Affairs or Massachusetts Gaming Commission.
- (2) Green highlighted companies have been paid as of August 31, 2018.
- WBE = Woman-owned Business Enterprise; MBE = Minority-owned Business Enterprise; VBE = Veteran-owned Business Enterprise.

DESIGN & CONSULTING COMMITMENTS

AS OF SEPTEMBER 30, 2018

Ref	Company	Scope	Location	Diversity Status
31	Pristine Engineers, Inc.	MEP Peer Review Services	Raynham, MA	MBE
32	Pro Cure, LLC	FFE Project Management	National Harbor, MD	WBE
33	Renderready, LLC	Rendering and Graphic Design	Albuquerque, NM	MBE
34	RSE Associates, Inc.	Engineering Design	Watertown, MA	MBE
35	Sign Design, Inc.	Signage Design	Brockton, MA	WBE
36	Soden Sustainability Consulting, LLC	LEED	Winchester, MA	WBE
37	Spec's Design Group, LLC	Interior Design	Springfield, MA	WBE
38	Stevens & Associates	Façade Stabilization Design	Brattleboro, VT	VBE
39	Timothy Haahs & Associates, Inc.	Architect and Engineer of Record/ Parking Consultant	Blue Bell, PA	MBE
40	Two Twelve	Graphic Designer	New York, NY	WBE
41	US Inspection & Consulting, LLC	Construction Inspections	Lake Havasu City, AZ	MBE
42	VAV International, Inc.	Mechanical Consulting	Woburn, MA	MBE
43	WA Architects, Inc.	Architectural Services	Cleveland, OH	MBE
44	YA Construction Services, LLC	MEP Peer Review	St. Louis, MO	WBE

Notes:

- (1) Includes companies that are certified with the following agencies:
- MBE - Massachusetts Supplier Diversity Office or Greater New England Minority Supplier Development Council.
 - WBE - Massachusetts Supplier Diversity Office or Women's Business Enterprise National Council.
 - VBE - United States Department of Veteran Affairs or Massachusetts Gaming Commission.
- (2) Green highlighted companies have been paid as of August 31, 2018.
- WBE = Woman-owned Business Enterprise; MBE = Minority-owned Business Enterprise; VBE = Veteran-owned Business Enterprise.

Construction Commitments



CONSTRUCTION COMMITMENTS

AS OF SEPTEMBER 30, 2018

Group	Project Goals	Commitments	Company Count	Value
WBE	10.0%	21.3%	60	\$119.7M
MBE	5.0%	7.4%	30	\$41.1M
VBE	2.0%	6.4%	22	\$36.2M

Notes:

(1) Total Commitments through September 30, 2018 are \$561.6M.

(2) Includes companies that are certified with the following agencies:

- MBE - Massachusetts Supplier Diversity Office or Greater New England Minority Supplier Development Council.
- WBE - Massachusetts Supplier Diversity Office or Women's Business Enterprise National Council.
- VBE - United States Department of Veteran Affairs or Massachusetts Gaming Commission.

WBE = Woman-owned Business Enterprise; MBE = Minority-owned Business Enterprise; VBE = Veteran-owned Business Enterprise.

DIVERSE CONSTRUCTION COMPANIES

AS OF SEPTEMBER 30, 2018

Ref	Company	Scope	Location	Diversity Status
1	84 Lumber	Material Supplier	Hampden, MA	WBE
2	Aces Enterprises, LLC	Steel Plate Supplier	Dunlap, IL	VBE
3	AeroSage, LLC	Fire Protection Material Supplier	Tampa, FL	VBE
4	Alares, LLC	Commissioning and Construction Services	Quincy, MA	VBE
5	All American Signs	Signage	Plymouth, MA	VBE
6	Alonzee Consulting	Construction Consulting	Las Vegas, NV	WBE
7	American Environmental, Inc.	Abatement	Holyoke, MA	MBE
8	American Stair Corporation	Stair Supplier	Romeoville, IL	VBE
9	Architectural Products, Inc.	Glass and Glazing	Burlington, CT	WBE
10	Argent Associates, Inc.	Material Vendor	Burlington, CT	WBE
11	Arrow Security Corporation	Security Guard Services	Springfield, MA	VBE
12	Ayala Excavating and Trucking, LLC	Trucking	Springfield, MA	MBE
13	Baron Industries, Inc	Coiling Doors	Woburn, MA	VBE
14	Beacon Light & Supply, Co.	Electrical Supplier	Burlington, CT	MBE
15	BECO Electrical Contractors, Inc.	Electrical	Monson, MA	VBE
16	Berkshire Concrete Cutting, LLC	Saw Cutting	Torrington, CT	WBE
17	Brican, Inc.	General Contracting Services	Springfield, MA	VBE
18	C&C Contractors, LLC	Trucking Services	Springfield, MA	MBE
19	C&D Electronics, Inc.	Cabling, Wiring, Electronics Supplier	Holyoke, MA	MBE

Notes:

(1) Green highlighted companies have worked on site and been paid as of August 31, 2018.

WBE = Woman-owned Business Enterprise; MBE = Minority-owned Business Enterprise; VBE = Veteran-owned Business Enterprise.

DIVERSE CONSTRUCTION COMPANIES

AS OF SEPTEMBER 30, 2018

Ref	Company	Scope	Location	Diversity Status
20	C4 Cables	Hotel Electrical Material Supplier	Taunton, MA	WBE
21	Capasso Restoration, Inc.	95 State Masonry Contractor	North Haven, CT	WBE
22	Carl-Louis & Co, Inc.	Plumbing, Pipe Fitting, Heating	Dorchester, MA	MBE
23	Carol's Lighting & Supply Company	Electrical Supplies	Canton, MA	MBE
24	Certified Connection, Inc.	Podium Electrical Material Supplier	Worcester, MA	MBE
25	Central Ceilings, Inc.	Drywall Contractor	South Easton, MA	VBE
26	Chabot & Burnett Construction Co., Inc.	Masonry Contractor	Agawam, MA	WBE
27	Charle George Companies, Inc.	Solid Waste Disposal, Recycling, Trucking	Londonberry, NH	WBE
28	CK Flooring Solutions, Inc.	Carpet Installer	Chicopee, MA	WBE
29	CMJ, LLC	Property Management/Maintenance	Springfield, MA	MBE
30	Connecticut Drywall Finishing, Inc.	Drywall	West Springfield, MA	WBE
31	Connecticut Temperature Controls, LLC	Controls	Newington, CT	VBE
32	Consolidated Brick & Building Supplies, Inc.	Brick, Stone & Masonry Distributor	Avon, MA	WBE
33	Construction Labor Unlimited	Labor/Clean-Up	West Springfield, MA	WBE
34	Coghlin Electrical Contractors, Inc.	Electrical Services	Worcester, MA	WBE
35	C.R. Levesque Trucking Corp.	Hauling & Equipment Transportation	Monson, MA	WBE
36	Critical Power Testing and Maintenance, Inc.	Commissioning	Amesbury, MA	VBE
37	CSL, Inc.	Daycare Landscaping	Ludlow, MA	WBE

Notes:

(1) Green highlighted companies have worked on site and been paid as of August 31, 2018.

WBE = Woman-owned Business Enterprise; MBE = Minority-owned Business Enterprise; VBE = Veteran-owned Business Enterprise.

DIVERSE CONSTRUCTION COMPANIES

AS OF SEPTEMBER 30, 2018

Ref	Company	Scope	Location	Diversity Status
38	Dagle Electrical Construction Corp.	Offsite Improvements - Electrical	Melrose, MA	WBE
39	Davenport Advisors, LLC	Property Management/ Maintenance	Boston, MA	MBE
40	Dependable Masonry Construction Company, Inc.	Masonry and Brickpaving	North Reading, MA	MBE
41	Duray/J.F. Duncan Industries, Inc.	Food Service Equipment Packages	Downey, CA	MBE
42	D & W Construction, LLC	Drywall Finishing, Material & Labor	Winchester, MA	MBE
43	Eagle Elevator Company, Inc.	Elevator Repairs, Service, Maintenance	Boston, MA	VBE
44	East Coast Air Barrier & Restoration, Inc.	Waterproofing Services	Pittsfield, MA	WBE
45	EDI Landscape, LLC	Landscaping Services	Hartford, CT	WBE
46	EDM Construction, Inc.	Carpentry & Structural Steel Erection	Merrimac, MA	WBE
47	E L Waterman, Inc.	Pipe Supplier	Foxboro, MA	WBE
48	Evermore Light & Power, Inc.	Electrical	Somerville, MA	WBE
49	Fabiano Oil Corp.	Fuel & Oil Supplier	Wrentham, MA	WBE
50	Federal Concrete, Inc.	Concrete Services	Hopedale, MA	WBE
51	Fisher Contracting Corporation	General Contracting Services	Worcester, MA	WBE
52	Fletcher Sewer & Drain, Inc.	Inspection - FEIR	Ludlow, MA	WBE
53	Folan Waterproofing and Construction Company, Inc.	Masonry Contractors & Waterproofing	South Easton, MA	WBE
54	Frisoli Electric, Inc.	Electrical	Holbrook, MA	VBE
55	Front Line, Inc.	Final Cleaning	Hopedale, MA	WBE
56	Gomes Construction Co. Inc.	Utility Connections	Ludlow, MA	WBE

Notes:

(1) Green highlighted companies have worked on site and been paid as of August 31, 2018.

WBE = Woman-owned Business Enterprise; MBE = Minority-owned Business Enterprise; VBE = Veteran-owned Business Enterprise.

DIVERSE CONSTRUCTION COMPANIES

AS OF SEPTEMBER 30, 2018

Ref	Company	Scope	Location	Diversity Status
57	Granite City Electric Supply Company, Inc.	Electrical Supplier	Quincy, MA	WBE
58	Great In Counters, Inc.	Natural Stone & Quarts Fabrication	Smithfield, RI	WBE
59	Green Insulation, Inc.	Insulation	Adams, MA	WBE
60	H B Welding, Inc.	Steel, Welding, Iron Work	Johnston, RI	WBE
61	Hiway Safety Systems, Inc	Offsite Improvements - Traffic line striping	Rockland, MA	WBE
62	Homeland Mechanical, LLC	Pipe Supplier	Quincy, MA	VBE
63	Industrial Flame Cutting, Inc.	Steel Plate Supplier	Beacon Falls, CT	VBE
64	J.J. Curran & Sons, Inc.	Specialty Flooring	Albany, NY	WBE
65	JMK Building Supply, Inc	Drywall	Colchester, CT	WBE
66	JRL Construction, Inc.	General Contractor - Demolition	Springfield, MA	VBE
67	Kittredge Equipment Company, Inc.	Kitchen Equipment	Agawam, MA	WBE
68	L.K. Sheet Metal, Inc.	Sheet Metal	East Hartford, CT	WBE
69	Larry's Trucking Co.	Trucking	Springfield, MA	MBE
70	Lindon Group	Piping Materials	East Providence, RI	WBE
71	Liquore Sand & Gravel, LLC	Trucking and Materials	Enfield, CT	VBE
72	M. Frank Higgins & Co., Inc.	Casino Tile and Stone	Newington, CT	WBE
73	Mastercraft Floor Covering, Inc.	Carpet Installation	Glenpool, OK	WBE
74	McElroy Scenic Service, LLC	Millwork Fabricator	Ashley Falls, MA	WBE
75	Medeiros Hydroseeding & Landscaping Construction, Inc.	Trucking and Soil Materials	Monson, MA	MBE
76	Moor Metals, Inc.	Sales and Distribution of Metals	Holliston, MA	MBE

Notes:

(1) Green highlighted companies have worked on site and been paid as of August 31, 2018.

WBE = Woman-owned Business Enterprise; MBE = Minority-owned Business Enterprise; VBE = Veteran-owned Business Enterprise.

DIVERSE CONSTRUCTION COMPANIES

AS OF SEPTEMBER 30, 2018

Ref	Company	Scope	Location	Diversity Status
77	Ms. Pipe, LLC	Procurement of Valves, Pipes and Fittings	South Windsor, CT	WBE
78	Multi-Residential Kitchens	Cabinetry, Countertops, Millwork, Install	Hagerstown, MD	WBE
79	New Bedford Floor Covering Sales Company, Inc	Floor Covering Supplier	New Bedford, MA	MBE
80	New England Foundation Company, Inc.	Helical Piles	Boston, MA	WBE
81	Northeastern Steel Corporation	Steel Distributor	Revere, MA	MBE
82	Orissa, LLC	Cleaning Service	Rocky Hill, CT	MBE
83	Performance Testing & Balancing LLC	Testing & Balancing	South Hampton, MA	VBE
84	Piping Systems, Inc.	HVAC	Assonet, MA	WBE
85	Protocol Management Services, Inc.	Raised Access Floors Material Supplier	North Attleboro, MA	WBE
86	Quinette King Consulting	Blackout Paint Supplier	Las Vegas, NV	MBE
87	Rebars & Mesh, Inc.	Concrete	Haverhill, MA	WBE
88	Regis Steel Corporation	Steel Erection/ Reinforcing	Fall River, MA	MBE
89	S&F Concrete Contractors, Inc.	Concrete	Hudson, MA	MBE
90	S-Cel-O, LLC	95 State Painting	Springfield, MA	MBE
91	Security Construction Services, Inc.	Fencing	Hudson, MA	WBE
92	SOS Corporation	Construction Cleaning, Selective Interior Demolition	Milford, MA	WBE
93	Steere Engineering, Inc.	Engineering Services	Warwick, RI	WBE
94	Strategic Environmental Services, Inc.	Environmental Consultants	Sutton, MA	WBE

Notes:

(1) Green highlighted companies have worked on site and been paid as of August 31, 2018.

WBE = Woman-owned Business Enterprise; MBE = Minority-owned Business Enterprise; VBE = Veteran-owned Business Enterprise.

DIVERSE CONSTRUCTION COMPANIES

AS OF SEPTEMBER 30, 2018

Ref	Company	Scope	Location	Diversity Status
95	Sullivan and Narey Construction, Inc.	Armory Building Masonry	Holyoke, MA	VBE
96	Superior Caulking & Waterproofing	Caulking & Waterproofing	Palmer, MA	VBE
97	Supplies Exchange Systems	Materials Supplier	Dorchester, MA	MBE
98	T & M Equipment Corporation	Excavating Contractor	Springfield, MA	VBE
99	Tango Construction Inc.	Paving, Catch Basin, Manhole Adjustment	Fitchburg, MA	MBE
100	Tavares, LLC	Fireproofing	Providence, RI	MBE
101	Titan Roofing Company	Roofing	Springfield, MA	MBE
102	Total Mechanical Service Corp.	Pool Mechanical Contractor	Plymouth, MA	MBE
103	Triton Leasing and Rental, Inc.	Demolition & Abatement	Feeding Hills, MA	WBE
104	Turtle & Hughes, Inc.	Podium Unistrut Supplier	Linden, NJ	WBE
105	United Personnel Services, Inc.	Kitchen Equipment Labor	Springfield, MA	WBE
106	Ultimate Abatement Company, Inc.	Abatement	Plainfield, MA	WBE
107	Wallco Installations, LLC	Operable Partition Installation	Fairfield, CT	WBE
108	Welch Associates Land Surveyors, Inc.	Land Surveying	West Bridgewater, MA	WBE
109	West Floor Covering, Inc.	Sales and Installation of Floor Coverings	Pembroke, MA	WBE
110	Willow Tree Outdoor, LLC	Landscape	Springfield, MA	WBE
111	Woodchuck's Building & Hone Center	Construction Supplier	Rockland, MA	MBE
112	Younger Brothers Construction, LLC	Materials Supplier	Watertown, MA	MBE

Notes:

(1) Green highlighted companies have worked on site and been paid as of August 31, 2018.

WBE = Woman-owned Business Enterprise; MBE = Minority-owned Business Enterprise; VBE = Veteran-owned Business Enterprise.

MGM Springfield
 Workforce Diversity Report (By Company)
 As of: September 30, 2018

Reference	Company	This Month's Workforce Diversity Statistics							Project To Date Workforce Diversity Statistics								
		Employee Count	This Month's Total Hours	Women		Minority		Veteran		Employee Count	Project To Date Total Hours	Women		Minority		Veteran	
				Hours	%	Hours	%	Hours	%			Hours	%	Hours	%	Hours	%
64	Gomes Construction Company, Inc.	-	0.00	0.00	0.00%	0.00	0.00%	0.00	0.00%	4	575.50	0.00	0.00%	0.00	0.00%	0.00	0.00%
65	Granite State Specialties LLC	-	0.00	0.00	0.00%	0.00	0.00%	0.00	0.00%	5	341.50	0.00	0.00%	0.00	0.00%	0.00	0.00%
66	Green Insulation, Inc.	-	0.00	0.00	0.00%	0.00	0.00%	0.00	0.00%	5	2,264.00	0.00	0.00%	48.00	2.12%	0.00	0.00%
67	H. Carr & Sons, Inc.	-	0.00	0.00	0.00%	0.00	0.00%	0.00	0.00%	224	190,401.50	9,399.00	4.94%	46,176.50	24.25%	19,118.00	10.04%
68	Harry Grodsky & Co.	-	0.00	0.00	0.00%	0.00	0.00%	0.00	0.00%	217	121,710.50	6,031.00	4.96%	9,294.50	7.64%	11,988.50	9.85%
69	Hayward Baker Inc.	-	0.00	0.00	0.00%	0.00	0.00%	0.00	0.00%	32	4,465.50	306.50	6.86%	1,170.50	26.21%	775.00	17.36%
70	HB Welding	-	0.00	0.00	0.00%	0.00	0.00%	0.00	0.00%	16	6,833.00	148.50	2.17%	470.00	6.88%	1,082.00	15.83%
71	Heritage Restoration, Inc.	-	0.00	0.00	0.00%	0.00	0.00%	0.00	0.00%	17	5,868.00	82.00	1.40%	2,336.00	39.81%	100.00	1.70%
72	Hickman & Sgroi Electric Inc.	-	0.00	0.00	0.00%	0.00	0.00%	0.00	0.00%	2	192.00	0.00	0.00%	0.00	0.00%	0.00	0.00%
73	Insulation Contractor of New England LLC	-	0.00	0.00	0.00%	0.00	0.00%	0.00	0.00%	26	7,778.50	0.00	0.00%	3,128.00	40.21%	902.00	11.60%
74	Interbuild, Inc.	-	0.00	0.00	0.00%	0.00	0.00%	0.00	0.00%	19	8,725.50	343.00	3.93%	512.00	5.87%	0.00	0.00%
75	J.D. Rivet & Co. Inc.	-	0.00	0.00	0.00%	0.00	0.00%	0.00	0.00%	1	3.00	0.00	0.00%	0.00	0.00%	0.00	0.00%
76	Jantile Boston	-	0.00	0.00	0.00%	0.00	0.00%	0.00	0.00%	54	24,778.00	363.00	1.47%	3,498.50	14.12%	0.00	0.00%
77	JDC Demolition	-	0.00	0.00	0.00%	0.00	0.00%	0.00	0.00%	29	3,874.00	400.00	10.33%	792.00	20.44%	160.00	4.13%
78	John W. Egan	-	0.00	0.00	0.00%	0.00	0.00%	0.00	0.00%	10	1,327.50	0.00	0.00%	484.00	36.46%	0.00	0.00%
79	Jones Engineering LLC	-	0.00	0.00	0.00%	0.00	0.00%	0.00	0.00%	2	168.00	0.00	0.00%	0.00	0.00%	0.00	0.00%
80	JRL Construction, Inc.	-	0.00	0.00	0.00%	0.00	0.00%	0.00	0.00%	84	29,913.56	5,897.21	19.71%	11,391.50	38.08%	5,272.00	17.62%
81	K&K Acoustical Ceilings, Inc.	-	0.00	0.00	0.00%	0.00	0.00%	0.00	0.00%	8	2,237.56	321.50	14.37%	357.50	15.98%	0.00	0.00%
82	KHS&S Contractors, Inc.	-	0.00	0.00	0.00%	0.00	0.00%	0.00	0.00%	123	77,140.50	5,090.00	6.60%	23,637.00	30.64%	5,905.00	7.65%
83	Kleeberg Mechanical Services, LLC	-	0.00	0.00	0.00%	0.00	0.00%	0.00	0.00%	29	2,675.50	0.00	0.00%	334.00	12.48%	0.00	0.00%
84	Kleeberg Sheet Metal, Inc.	-	0.00	0.00	0.00%	0.00	0.00%	0.00	0.00%	13	1,144.50	255.00	22.28%	104.00	9.09%	0.00	0.00%
85	L.K. Sheet Metal, Inc.	-	0.00	0.00	0.00%	0.00	0.00%	0.00	0.00%	77	61,161.25	4,448.25	7.27%	10,551.25	17.25%	4,348.00	7.11%
86	Langan Insulation LLC	-	0.00	0.00	0.00%	0.00	0.00%	0.00	0.00%	2	568.00	0.00	0.00%	0.00	0.00%	0.00	0.00%
87	Legere Group	-	0.00	0.00	0.00%	0.00	0.00%	0.00	0.00%	10	6,818.00	1,084.00	15.90%	1,596.00	23.41%	557.00	8.17%
88	Longden Company, Inc.	-	0.00	0.00	0.00%	0.00	0.00%	0.00	0.00%	13	2,770.00	184.00	6.64%	1,270.00	45.85%	144.00	5.20%
89	M. Frank Higgins & Co., Inc.	-	0.00	0.00	0.00%	0.00	0.00%	0.00	0.00%	42	19,023.00	383.00	2.01%	3,766.00	19.80%	0.00	0.00%
90	M.L. McDonald Sales Co., LLC	-	0.00	0.00	0.00%	0.00	0.00%	0.00	0.00%	11	1,409.00	192.00	13.63%	192.00	13.63%	0.00	0.00%
91	M.L. Schmitt, Inc.	-	0.00	0.00	0.00%	0.00	0.00%	0.00	0.00%	43	36,787.75	5,867.00	15.95%	5,923.00	16.10%	1,994.50	5.42%
92	Major Theatre Equipment Corp.	-	0.00	0.00	0.00%	0.00	0.00%	0.00	0.00%	7	1,044.00	0.00	0.00%	0.00	0.00%	216.00	20.69%
93	Manganaro Northeast, LLC	-	0.00	0.00	0.00%	0.00	0.00%	0.00	0.00%	9	621.00	0.00	0.00%	306.00	49.28%	0.00	0.00%
94	Marr Equipment Company	-	0.00	0.00	0.00%	0.00	0.00%	0.00	0.00%	22	9,212.75	4,544.25	49.33%	6,567.25	71.28%	0.00	0.00%
95	Marr Scaffold	-	0.00	0.00	0.00%	0.00	0.00%	0.00	0.00%	21	638.00	0.00	0.00%	282.00	44.20%	16.50	2.59%
96	Marguerite Concrete	-	0.00	0.00	0.00%	0.00	0.00%	0.00	0.00%	115	6,069.00	0.00	0.00%	1,011.00	16.66%	1,016.00	16.74%
97	Massey's Plate Glass & Aluminum, Inc.	-	0.00	0.00	0.00%	0.00	0.00%	0.00	0.00%	35	23,943.00	1,616.00	6.75%	3,739.00	15.62%	2,255.00	9.42%
98	Mastercraft FC LLC	-	0.00	0.00	0.00%	0.00	0.00%	0.00	0.00%	22	7,434.77	20.50	0.28%	3,180.81	42.78%	44.75	0.60%
99	Maxim Crane Works LP	-	0.00	0.00	0.00%	0.00	0.00%	0.00	0.00%	7	1,136.00	0.00	0.00%	543.00	47.80%	24.00	2.11%
100	Medeiros Hydroseding & Landscape Construction, Inc.	-	0.00	0.00	0.00%	0.00	0.00%	0.00	0.00%	2	17.00	0.00	0.00%	11.00	64.71%	0.00	0.00%
101	Midwest Pro Painting Inc	-	0.00	0.00	0.00%	0.00	0.00%	0.00	0.00%	66	47,683.50	5,408.50	11.34%	15,862.00	33.27%	1,117.00	2.34%
102	Mobile Welding Service	-	0.00	0.00	0.00%	0.00	0.00%	0.00	0.00%	3	132.00	0.00	0.00%	44.00	33.33%	0.00	0.00%
103	Moran Sheet Metal, Inc.	-	0.00	0.00	0.00%	0.00	0.00%	0.00	0.00%	15	1,051.25	0.00	0.00%	289.75	27.56%	0.00	0.00%
104	MTK Construction Services, Inc.	-	0.00	0.00	0.00%	0.00	0.00%	0.00	0.00%	28	1,278.00	0.00	0.00%	64.00	5.01%	0.00	0.00%
105	NER Construction Management	-	0.00	0.00	0.00%	0.00	0.00%	0.00	0.00%	19	2,125.00	0.00	0.00%	405.00	19.06%	0.00	0.00%
106	New England Concrete Cutting, Inc.	-	0.00	0.00	0.00%	0.00	0.00%	0.00	0.00%	3	456.00	0.00	0.00%	0.00	0.00%	0.00	0.00%
107	New England Decks & Floors, Inc.	-	0.00	0.00	0.00%	0.00	0.00%	0.00	0.00%	11	4,317.00	817.00	18.93%	340.00	7.88%	0.00	0.00%
108	New England Foundation Co., Inc.	-	0.00	0.00	0.00%	0.00	0.00%	0.00	0.00%	20	2,727.00	0.00	0.00%	587.50	21.54%	226.00	8.29%
109	New England Partition & Installation, LLC	-	0.00	0.00	0.00%	0.00	0.00%	0.00	0.00%	1	70.50	0.00	0.00%	0.00	0.00%	0.00	0.00%
110	New Hampshire Steel Erectors, LLC	-	0.00	0.00	0.00%	0.00	0.00%	0.00	0.00%	11	2,753.50	518.50	18.83%	104.00	3.78%	0.00	0.00%
111	North East Foam Solutions, Inc.	-	0.00	0.00	0.00%	0.00	0.00%	0.00	0.00%	3	528.00	0.00	0.00%	376.00	71.21%	0.00	0.00%
112	Northeast Contractors, Inc.	-	0.00	0.00	0.00%	0.00	0.00%	0.00	0.00%	37	26,339.50	2,276.00	8.64%	918.00	3.49%	1,318.00	5.00%
113	Northeast Lighting Protection, LLC	-	0.00	0.00	0.00%	0.00	0.00%	0.00	0.00%	7	435.95	0.00	0.00%	119.35	27.38%	0.00	0.00%
114	Northeast Steel Erectors	-	0.00	0.00	0.00%	0.00	0.00%	0.00	0.00%	7	1,359.00	34.00	2.50%	183.00	13.47%	393.00	28.92%
115	Northeastern Steel Corporation	-	0.00	0.00	0.00%	0.00	0.00%	0.00	0.00%	6	64.00	9.00	14.06%	50.00	78.13%	0.00	0.00%
116	Northern General	-	0.00	0.00	0.00%	0.00	0.00%	0.00	0.00%	118	52,051.50	3,852.50	7.40%	9,281.50	17.83%	4,498.50	8.64%
117	Orissa, LLC	-	0.00	0.00	0.00%	0.00	0.00%	0.00	0.00%	8	78.00	54.00	69.23%	13.00	16.67%	0.00	0.00%
118	P. Gioioso & Sons Inc.	-	0.00	0.00	0.00%	0.00	0.00%	0.00	0.00%	9	834.50	114.50	13.72%	0.00	0.00%	0.00	0.00%
119	Palmer Paving Corporation	-	0.00	0.00	0.00%	0.00	0.00%	0.00	0.00%	59	942.00	53.00	5.63%	14.00	1.49%	0.00	0.00%
120	Performance Testing & Balancing, LLC	-	0.00	0.00	0.00%	0.00	0.00%	0.00	0.00%	5	266.00	0.00	0.00%	0.00	0.00%	38.00	14.29%
121	Professional Drywall Construction, Inc.	-	0.00	0.00	0.00%	0.00	0.00%	0.00	0.00%	96	12,880.50	438.50	3.40%	2,254.50	17.50%	1,862.00	14.46%
122	Regis Steel Corp	-	0.00	0.00	0.00%	0.00	0.00%	0.00	0.00%	69	9,976.50	1,436.50	14.40%	2,335.00	23.41%	305.00	3.06%
123	RoadSafe Traffic Systems	-	0.00	0.00	0.00%	0.00	0.00%	0.00	0.00%	6	49.00	0.00	0.00%	0.00	0.00%	0.00	0.00%
124	S & F Concrete Contractors, Inc.	-	0.00	0.00	0.00%	0.00	0.00%	0.00	0.00%	371	89,248.00	7,427.50	8.32%	27,991.50	31.36%	6,112.50	6.85%
125	Safespan	-	0.00	0.00	0.00%	0.00	0.00%	0.00	0.00%	11	780.50	0.00	0.00%	56.00	7.17%	0.00	0.00%
126	Safway Services	-	0.00	0.00	0.00%	0.00	0.00%	0.00	0.00%	81	37,006.58	2,243.00	6.06%	18,958.50	51.23%	1,269.00	3.43%
127	Save-On-Wall Co., Inc.	-	0.00	0.00	0.00%	0.00	0.00%	0.00	0.00%	9	290.50	45.00	15.49%	45.00	15.49%	8.00	2.75%
128	S-Cel-O Painting, LLC	-	0.00	0.00	0.00%	0.00	0.00%	0.00	0.00%	20	6,490.50	594.50	9.16%	1,764.00	27.18%	1,066.00	16.42%
129	Schindler Elevator Corp	-	0.00	0.00	0.00%	0.00	0.00%	0.00	0.00%	48	26,812.90	1,138.00	4.24%	1,460.20	5.45%	3,074.00	11.46%
130	Security Construction Services, Inc. d/b/a: Security Fence Co.	-	0.00	0.00	0.00%	0.00	0.00%	0.00	0.00%	14	3,866.00	300.00	7.76%	1,233.25	31.90%	40.00	1.03%
131	Sera Design	-	0.00	0.00	0.00%	0.00	0.00%	0.00	0.00%	4	705.50	0.00	0.00%	522.00	73.99%	0.00	0.00%
132	Skyline Drywall, Inc.	-	0.00	0.00	0.00%	0.00	0.00%	0.00	0.00%	20	11,839.00	1,497.00	12.64%	3,399.00	28.71%	2,479.50	20.94%
133	Soep Painting Corp	-	0.00	0.00	0.00%	0.00	0.00%	0.00	0.00%	39	11,791.50	0.00	0.00%	1,392.00	11.81%	0.00	0.00%
134	SOS Corporation	-	0.00	0.00	0.0												

MGM Springfield

Workforce Diversity Report (By Company)

As of: September 30, 2018

Reference	Company	This Month's Workforce Diversity Statistics								Project To Date Workforce Diversity Statistics							
		Employee Count	This Month's Total Hours	Women		Minority		Veteran		Employee Count	Project To Date Total Hours	Women		Minority		Veteran	
				Hours	%	Hours	%	Hours	%			Hours	%	Hours	%	Hours	%
141	Tavares, LLC	-	0.00	0.00	0.00%	0.00	0.00%	0.00	0.00%	30	6,643.00	489.00	7.36%	1,970.00	29.66%	0.00	0.00%
142	Tech Valley Contracting, LLC	-	0.00	0.00	0.00%	0.00	0.00%	0.00	0.00%	8	2,018.00	206.00	10.21%	0.00	0.00%	0.00	0.00%
143	The Northern Corp.	-	0.00	0.00	0.00%	0.00	0.00%	0.00	0.00%	5	170.00	0.00	0.00%	32.00	18.82%	0.00	0.00%
144	The Pappas Company, Inc.	-	0.00	0.00	0.00%	0.00	0.00%	0.00	0.00%	4	128.00	24.00	18.75%	78.00	60.94%	0.00	0.00%
145	Thunderbird Construction	-	0.00	0.00	0.00%	0.00	0.00%	0.00	0.00%	6	97.00	0.00	0.00%	40.00	41.24%	0.00	0.00%
146	Tishman	-	0.00	0.00	0.00%	0.00	0.00%	0.00	0.00%	29	44,501.00	11,261.00	25.31%	12,120.00	27.24%	7,120.00	16.00%
147	Titan Roofing, Inc.	-	0.00	0.00	0.00%	0.00	0.00%	0.00	0.00%	136	39,850.25	611.25	1.53%	6,769.25	16.99%	3,233.75	8.11%
148	T.J. Conway Company	-	0.00	0.00	0.00%	0.00	0.00%	0.00	0.00%	83	57,528.75	2,237.00	3.89%	10,039.25	17.45%	10,077.50	17.52%
149	Triton Leasing and Rental, Inc.	-	0.00	0.00	0.00%	0.00	0.00%	0.00	0.00%	35	3,187.50	0.00	0.00%	1,547.50	48.55%	239.00	7.50%
150	Ultimate Abatement Company, Inc.	-	0.00	0.00	0.00%	0.00	0.00%	0.00	0.00%	47	10,430.50	3,632.50	34.83%	10,119.50	97.02%	0.00	0.00%
151	Unistrut International Corporation	-	0.00	0.00	0.00%	0.00	0.00%	0.00	0.00%	25	5,477.50	586.00	10.70%	1,069.00	19.52%	184.00	3.36%
152	Universal Electric Co.	-	0.00	0.00	0.00%	0.00	0.00%	0.00	0.00%	22	7,323.50	556.50	7.60%	2,166.00	29.58%	394.00	5.38%
153	Walco Installations, LLC	-	0.00	0.00	0.00%	0.00	0.00%	0.00	0.00%	15	1,221.00	177.00	14.50%	241.50	19.78%	182.00	14.91%
154	Whitehawk Construction Company Inc.	-	0.00	0.00	0.00%	0.00	0.00%	0.00	0.00%	48	16,877.00	1,164.00	6.90%	2,380.00	14.10%	776.00	4.60%
155	William Roberts Electric Co., Inc.	-	0.00	0.00	0.00%	0.00	0.00%	0.00	0.00%	27	18,571.00	488.00	2.63%	334.00	1.80%	0.00	0.00%
156	Willow Tree Outdoor, LLC	-	0.00	0.00	0.00%	0.00	0.00%	0.00	0.00%	5	261.50	0.00	0.00%	105.50	40.34%	0.00	0.00%
157	Winterberry Irrigation, LLC	-	0.00	0.00	0.00%	0.00	0.00%	0.00	0.00%	5	1,548.50	0.00	0.00%	1,072.75	69.28%	0.00	0.00%
158	Wolfe House Movers, LLC	-	0.00	0.00	0.00%	0.00	0.00%	0.00	0.00%	10	1,194.50	0.00	0.00%	306.00	25.62%	228.00	19.09%
159	Wolverine Fire Protection Co	-	0.00	0.00	0.00%	0.00	0.00%	0.00	0.00%	34	34,422.50	2,267.50	6.59%	6,894.50	20.03%	1,591.00	4.62%
160	Worcester Elevator Co., Inc.	-	0.00	0.00	0.00%	0.00	0.00%	0.00	0.00%	2	12.00	0.00	0.00%	0.00	0.00%	6.00	50.00%
Total - Unions		-	0.00	0.00	0.00%	0.00	0.00%	0.00	0.00%	5,589	2,370,604.51	178,569.46	7.53%	533,221.68	22.49%	197,373.67	8.33%
161	On-Site Design / Management	-	0.00	0.00	0.00%	0.00	0.00%	0.00	0.00%	622	370,359.33	55,918.90	15.10%	63,798.48	17.23%	41,231.55	11.13%
Total		-	0.00	0.00	0.00%	0.00	0.00%	0.00	0.00%	6,211	2,740,963.84	234,488.36	8.55%	597,020.16	21.78%	238,605.22	8.71%

Totals - Overall				
Group	Project Goals	Project To Date	Delta	
Women	6.90%	8.55%	1.65%	
Minority	15.30%	21.78%	6.48%	
Veteran	8.00%	8.71%	0.71%	

Notes:

(1) Statistics include all workforce reports that were received by MGM as of September 30, 2018

(2) The total number of unique union workers that have worked on site is approximately 4,985. The 5,589 union workers identified above includes workers that have worked for multiple companies.

MGM Springfield
 Workforce Diversity Report (By Union)
 As of: September 30, 2018

Reference	Union	This Month's Workforce Diversity Statistics						Project To Date Workforce Diversity Statistics									
		Employee Count	This Month's Total Hours	Women		Minority		Veteran	Employee Count	Project To Date Total Hours	Women		Minority		Veteran		
				Hours	%	Hours	%				Hours	%	Hours	%			
1	AEEF CWA Local #1300	0	0.00	0.00	0.00%	0.00	0.00%	0.00	0.00%	1	324.00	0.00	0.00%	0.00	0.00%	0.00	0.00%
2	AFCME Local #230	0	0.00	0.00	0.00%	0.00	0.00%	0.00	0.00%	1	48.00	0.00	0.00%	48.00	100.00%	0.00	0.00%
3	Asbestos Workers #6	0	0.00	0.00	0.00%	0.00	0.00%	0.00	0.00%	109	28,643.00	0.00	0.00%	9,382.50	32.76%	3,307.00	11.55%
4	Boston Plasters' & Cement Masons' - Asphalt Layers' Union #534	0	0.00	0.00	0.00%	0.00	0.00%	0.00	0.00%	107	8,428.50	817.00	9.69%	1,032.50	12.25%	45.00	0.53%
5	Bricklayers Local #1	0	0.00	0.00	0.00%	0.00	0.00%	0.00	0.00%	45	10,656.00	0.00	0.00%	4,927.00	46.24%	152.00	1.43%
6	Bricklayers Local #3	0	0.00	0.00	0.00%	0.00	0.00%	0.00	0.00%	294	94,282.00	2,986.00	3.17%	18,667.00	19.80%	2,735.50	2.90%
7	Building Wreckers Union #1421	0	0.00	0.00	0.00%	0.00	0.00%	0.00	0.00%	3	542.90	0.00	0.00%	542.00	100.00%	0.00	0.00%
8	Carpenters Commercial Construction Local #349	0	0.00	0.00	0.00%	0.00	0.00%	0.00	0.00%	1	6.00	0.00	0.00%	6.00	100.00%	0.00	0.00%
9	Carpenters Interior Systems Local #352	0	0.00	0.00	0.00%	0.00	0.00%	0.00	0.00%	2	12.00	0.00	0.00%	6.00	50.00%	0.00	0.00%
10	Carpenters Local #24	0	0.00	0.00	0.00%	0.00	0.00%	0.00	0.00%	4	33.50	0.00	0.00%	0.00	0.00%	0.00	0.00%
11	Carpenters Local #26	0	0.00	0.00	0.00%	0.00	0.00%	0.00	0.00%	1	21.00	0.00	0.00%	0.00	0.00%	0.00	0.00%
12	Carpenters - Local #108	0	0.00	0.00	0.00%	0.00	0.00%	0.00	0.00%	817	337,609.74	26,582.00	7.87%	84,428.50	25.01%	36,603.00	10.84%
13	Carpenters Local #107	0	0.00	0.00	0.00%	0.00	0.00%	0.00	0.00%	18	7,787.50	0.00	0.00%	1,658.00	21.29%	112.00	1.44%
14	Carpenters Local #109	0	0.00	0.00	0.00%	0.00	0.00%	0.00	0.00%	2	671.50	117.00	17.42%	117.00	17.42%	0.00	0.00%
15	Carpenters Local #111	0	0.00	0.00	0.00%	0.00	0.00%	0.00	0.00%	1	56.00	0.00	0.00%	0.00	0.00%	0.00	0.00%
16	Carpenters Local #1305	0	0.00	0.00	0.00%	0.00	0.00%	0.00	0.00%	4	366.00	0.00	0.00%	226.00	61.75%	0.00	0.00%
17	Carpenters Local #210	0	0.00	0.00	0.00%	0.00	0.00%	0.00	0.00%	2	16.00	0.00	0.00%	0.00	0.00%	8.00	50.00%
18	Carpenters Local #2168	0	0.00	0.00	0.00%	0.00	0.00%	0.00	0.00%	23	4,683.56	10.50	0.22%	2,374.70	50.70%	44.75	0.96%
19	Carpenters Local #2169	0	0.00	0.00	0.00%	0.00	0.00%	0.00	0.00%	3	1,152.51	0.00	0.00%	0.00	0.00%	0.00	0.00%
20	Carpenters Local #218	0	0.00	0.00	0.00%	0.00	0.00%	0.00	0.00%	1	6.00	0.00	0.00%	0.00	0.00%	0.00	0.00%
21	Carpenters Local #275	0	0.00	0.00	0.00%	0.00	0.00%	0.00	0.00%	4	114.00	0.00	0.00%	32.00	28.07%	0.00	0.00%
22	Carpenters Local #33	0	0.00	0.00	0.00%	0.00	0.00%	0.00	0.00%	13	3,259.50	45.00	1.38%	0.00	0.00%	0.00	0.00%
23	Carpenters Local #326	0	0.00	0.00	0.00%	0.00	0.00%	0.00	0.00%	4	1,097.00	0.00	0.00%	92.00	8.39%	0.00	0.00%
24	Carpenters Local #327	0	0.00	0.00	0.00%	0.00	0.00%	0.00	0.00%	3	1,829.50	0.00	0.00%	0.00	0.00%	0.00	0.00%
25	Carpenters Local #328	0	0.00	0.00	0.00%	0.00	0.00%	0.00	0.00%	2	20.00	0.00	0.00%	0.00	0.00%	0.00	0.00%
26	Carpenters Local #330	0	0.00	0.00	0.00%	0.00	0.00%	0.00	0.00%	4	885.00	0.00	0.00%	809.00	91.41%	0.00	0.00%
27	Carpenters Local #336	0	0.00	0.00	0.00%	0.00	0.00%	0.00	0.00%	273	132,508.09	8,684.50	6.55%	34,735.50	26.21%	14,846.00	11.20%
28	Carpenters Local #337	0	0.00	0.00	0.00%	0.00	0.00%	0.00	0.00%	1	328.50	0.00	0.00%	0.00	0.00%	0.00	0.00%
29	Carpenters Local #338	0	0.00	0.00	0.00%	0.00	0.00%	0.00	0.00%	6	761.00	0.00	0.00%	210.00	27.60%	0.00	0.00%
30	Carpenters Local #339	0	0.00	0.00	0.00%	0.00	0.00%	0.00	0.00%	3	104.00	0.00	0.00%	54.00	51.92%	0.00	0.00%
31	Carpenters Local #346	0	0.00	0.00	0.00%	0.00	0.00%	0.00	0.00%	1	32.00	0.00	0.00%	0.00	0.00%	0.00	0.00%
32	Carpenters Local #349	0	0.00	0.00	0.00%	0.00	0.00%	0.00	0.00%	7	1,190.00	0.00	0.00%	258.00	21.68%	0.00	0.00%
33	Carpenters Local #424	0	0.00	0.00	0.00%	0.00	0.00%	0.00	0.00%	2	80.00	0.00	0.00%	72.00	90.00%	65.00	81.25%
34	Carpenters Local #43	0	0.00	0.00	0.00%	0.00	0.00%	0.00	0.00%	6	554.00	0.00	0.00%	48.00	8.66%	0.00	0.00%
35	Carpenters Local #475	0	0.00	0.00	0.00%	0.00	0.00%	0.00	0.00%	1	39.00	0.00	0.00%	0.00	0.00%	0.00	0.00%
36	Carpenters Local #535	0	0.00	0.00	0.00%	0.00	0.00%	0.00	0.00%	3	565.00	0.00	0.00%	0.00	0.00%	0.00	0.00%
37	Carpenters Local #67	0	0.00	0.00	0.00%	0.00	0.00%	0.00	0.00%	3	320.00	0.00	0.00%	136.00	42.50%	0.00	0.00%
38	Carpenters Local #635	0	0.00	0.00	0.00%	0.00	0.00%	0.00	0.00%	5	343.50	0.00	0.00%	0.00	0.00%	89.00	25.91%
39	Carpenters Local #1977	0	0.00	0.00	0.00%	0.00	0.00%	0.00	0.00%	23	13,421.00	0.00	0.00%	8,425.00	62.77%	32.00	0.24%
40	Cement Mason Local #592	0	0.00	0.00	0.00%	0.00	0.00%	0.00	0.00%	1	65.00	0.00	0.00%	0.00	0.00%	0.00	0.00%
41	CT Bricklayers #1	0	0.00	0.00	0.00%	0.00	0.00%	0.00	0.00%	19	5,859.00	0.00	0.00%	2,931.50	50.03%	0.00	0.00%
42	Floorcoverers Local #2168	0	0.00	0.00	0.00%	0.00	0.00%	0.00	0.00%	54	6,790.00	1,064.00	15.67%	2,178.00	32.08%	521.50	7.68%
43	Glaziers Union Local 1133	0	0.00	0.00	0.00%	0.00	0.00%	0.00	0.00%	9	714.00	0.00	0.00%	0.00	0.00%	0.00	0.00%
44	International Alliance Theatrical Stage Employees Local #53	0	0.00	0.00	0.00%	0.00	0.00%	0.00	0.00%	7	1,044.00	0.00	0.00%	0.00	0.00%	216.00	20.69%
45	International Association of Heat and Frost Insulators - Local 33	0	0.00	0.00	0.00%	0.00	0.00%	0.00	0.00%	5	835.50	0.00	0.00%	0.00	0.00%	0.00	0.00%
46	International Association of Iron Workers Local #7	0	0.00	0.00	0.00%	0.00	0.00%	0.00	0.00%	146	69,795.00	6,383.00	9.15%	6,225.00	8.92%	4,084.00	5.85%
47	International Association of Iron Workers Local #15	0	0.00	0.00	0.00%	0.00	0.00%	0.00	0.00%	5	2,219.50	40.00	1.80%	137.00	6.17%	0.00	0.00%
48	International Brotherhood of Electrical Workers - IBEW Local #455	0	0.00	0.00	0.00%	0.00	0.00%	0.00	0.00%	3	112.25	50.75	45.21%	112.25	100.00%	0.00	0.00%
49	International Brotherhood of Electrical Workers - IBEW Local #7	0	0.00	0.00	0.00%	0.00	0.00%	0.00	0.00%	739	557,175.00	32,157.50	5.77%	87,230.75	15.66%	49,642.00	8.91%
50	International Brotherhood of Electrical Workers - IBEW Local #8	0	0.00	0.00	0.00%	0.00	0.00%	0.00	0.00%	1	273.50	0.00	0.00%	0.00	0.00%	0.00	0.00%
51	International Brotherhood of Electrical Workers - IBEW Local #35	0	0.00	0.00	0.00%	0.00	0.00%	0.00	0.00%	38	18,986.45	2,677.00	14.10%	4,730.35	24.91%	3,027.00	15.94%
52	International Brotherhood of Electrical Workers - IBEW Local #90	0	0.00	0.00	0.00%	0.00	0.00%	0.00	0.00%	3	773.00	0.00	0.00%	0.00	0.00%	0.00	0.00%
53	International Brotherhood of Electrical Workers - IBEW Local #96	0	0.00	0.00	0.00%	0.00	0.00%	0.00	0.00%	1	8.00	0.00	0.00%	8.00	100.00%	0.00	0.00%
54	International Brotherhood of Electrical Workers - IBEW Local #103	0	0.00	0.00	0.00%	0.00	0.00%	0.00	0.00%	21	2,194.00	204.00	9.30%	16.00	0.73%	211.00	9.62%
55	International Brotherhood of Electrical Workers - IBEW Local #104	0	0.00	0.00	0.00%	0.00	0.00%	0.00	0.00%	10	1,850.00	0.00	0.00%	212.00	11.46%	0.00	0.00%
56	International Brotherhood of Electrical Workers - IBEW Local #1228	0	0.00	0.00	0.00%	0.00	0.00%	0.00	0.00%	1	8.00	0.00	0.00%	8.00	100.00%	0.00	0.00%
57	International Brotherhood of Electrical Workers - IBEW 2nd District	0	0.00	0.00	0.00%	0.00	0.00%	0.00	0.00%	1	23.00	0.00	0.00%	0.00	0.00%	0.00	0.00%
58	International Union of Elevator Constructors Local #4	0	0.00	0.00	0.00%	0.00	0.00%	0.00	0.00%	6	404.00	0.00	0.00%	0.00	0.00%	0.00	0.00%
59	International Union of Elevator Constructors Local #41	0	0.00	0.00	0.00%	0.00	0.00%	0.00	0.00%	57	27,047.90	1,138.00	4.21%	1,460.20	5.40%	3,080.00	11.39%
60	International Union of Elevator Constructors Local #42	0	0.00	0.00	0.00%	0.00	0.00%	0.00	0.00%	1	46.00	0.00	0.00%	0.00	0.00%	0.00	0.00%
61	International Union of Elevator Constructors Local #43	0	0.00	0.00	0.00%	0.00	0.00%	0.00	0.00%	1	46.00	0.00	0.00%	0.00	0.00%	0.00	0.00%
62	International Union of Operating Engineers - IUOE Local #4	0	0.00	0.00	0.00%	0.00	0.00%	0.00	0.00%	79	8,218.00	0.00	0.00%	241.50	2.94%	807.00	9.82%
63	International Union of Operating Engineers - IUOE Local #5	0	0.00	0.00	0.00%	0.00	0.00%	0.00	0.00%	1	9.00	0.00	0.00%	0.00	0.00%	0.00	0.00%
64	International Union of Operating Engineers - IUOE Local #98	0	0.00	0.00	0.00%	0.00	0.00%	0.00	0.00%	218	64,663.55	7,645.75	11.82%	14,150.30	21.88%	3,366.75	5.21%
65	International Union of Operating Engineers - IUOE Local #106	0	0.00	0.00	0.00%	0.00	0.00%	0.00	0.00%	1	12.00	0.00	0.00%	12.00	100.00%	12.00	100.00%
66	International Union of Operating Engineers - IUOE Local #478	0	0.00	0.00	0.00%	0.00	0.00%	0.00	0.00%	5	2,317.50	0.00	0.00%	2,149.50	92.75%	0.00	0.00%
67	International Union of Painters and Allied Trades - RUPAT District #11	0	0.00	0.00	0.00%	0.00	0.00%	0.00	0.00%	6	125.50	0.00	0.00%	0.00	0.00%	0.00	0.00%
68	International Union of Painters and Allied Trades - RUPAT Local #1333	0	0.00	0.00	0.00%	0.00	0.00%	0.00	0.00%	35	14,779.50	0.00	0.00%	270.00	1.83%	2,170.00	14.68%
69	International Union of Painters and Allied Trades - RUPAT, DC #11, Local #481	0	0.00	0.00	0.00%	0.00	0.00%	0.00	0.00%	19	9,098.00	3,182.00	34.97%	2,564.00	28.18%	0.00	0.00%
70	Iron Workers District Council of New England	0	0.00	0.00	0.00%	0.00	0.00%	0.00	0.00%	177	39,752.00	4,543.00	11.43%	8,699.50	21.88%	4,946	

MGM Springfield
 Workforce Diversity Report (By Union)
 As of: September 30, 2018

Reference	Union	This Month's Workforce Diversity Statistics								Project To Date Workforce Diversity Statistics							
		Employee Count	This Month's Total Hours	Women		Minority		Veteran		Employee Count	Project To Date Total Hours	Women		Minority		Veteran	
				Hours	%	Hours	%	Hours	%			Hours	%	Hours	%	Hours	%
79	Laborers Local #230	0	0.00	0.00	0.00%	0.00	0.00%	0.00	0.00%	14	3,175.50	0.00	0.00%	2,111.00	66.48%	7.50	0.24%
80	Laborers Local #243	0	0.00	0.00	0.00%	0.00	0.00%	0.00	0.00%	6	4,057.50	82.00	2.02%	0.00	0.00%	0.00	0.00%
81	Laborers Local #271, Rhode Island	0	0.00	0.00	0.00%	0.00	0.00%	0.00	0.00%	8	1,358.00	1,072.00	78.94%	156.00	11.49%	0.00	0.00%
82	Laborers Local #385	0	0.00	0.00	0.00%	0.00	0.00%	0.00	0.00%	6	182.00	0.00	0.00%	8.00	4.40%	0.00	0.00%
83	Laborers Local #39	0	0.00	0.00	0.00%	0.00	0.00%	0.00	0.00%	9	3,091.51	0.00	0.00%	119.01	3.85%	2,347.50	75.93%
84	Laborers Local #429	0	0.00	0.00	0.00%	0.00	0.00%	0.00	0.00%	3	64.84	0.00	0.00%	40.84	62.99%	0.00	0.00%
85	Laborers Local #455	0	0.00	0.00	0.00%	0.00	0.00%	0.00	0.00%	24	6,097.50	1,496.00	24.53%	6,097.50	100.00%	0.00	0.00%
86	Laborers Local #473	0	0.00	0.00	0.00%	0.00	0.00%	0.00	0.00%	17	3,476.00	0.00	0.00%	34.00	0.98%	0.00	0.00%
87	Laborers Local #547	0	0.00	0.00	0.00%	0.00	0.00%	0.00	0.00%	8	2,183.00	0.00	0.00%	0.00	0.00%	0.00	0.00%
88	Laborers Local #560	0	0.00	0.00	0.00%	0.00	0.00%	0.00	0.00%	16	1,627.00	1,192.00	73.26%	1,057.00	64.97%	0.00	0.00%
89	Laborers Local #596	0	0.00	0.00	0.00%	0.00	0.00%	0.00	0.00%	223	88,184.75	9,732.50	11.04%	23,051.50	26.14%	4,951.00	5.61%
90	Laborers Local #609	0	0.00	0.00	0.00%	0.00	0.00%	0.00	0.00%	27	2,914.00	718.50	24.66%	125.00	4.29%	474.00	16.27%
91	Laborers Local #610	0	0.00	0.00	0.00%	0.00	0.00%	0.00	0.00%	14	403.50	0.00	0.00%	14.00	3.47%	0.00	0.00%
92	Laborers Local #611	0	0.00	0.00	0.00%	0.00	0.00%	0.00	0.00%	31	8,084.75	0.00	0.00%	6,254.00	77.36%	0.00	0.00%
93	Laborers Local #665	0	0.00	0.00	0.00%	0.00	0.00%	0.00	0.00%	9	1,659.50	32.00	1.93%	1,659.50	100.00%	0.00	0.00%
94	Laborers Local #675	0	0.00	0.00	0.00%	0.00	0.00%	0.00	0.00%	1	133.50	0.00	0.00%	133.50	100.00%	0.00	0.00%
95	Laborers Local #88 [Tunnel Workers]	0	0.00	0.00	0.00%	0.00	0.00%	0.00	0.00%	4	338.50	0.00	0.00%	8.00	2.36%	41.00	12.11%
96	Laborers Local #721	0	0.00	0.00	0.00%	0.00	0.00%	0.00	0.00%	1	33.00	0.00	0.00%	0.00	0.00%	0.00	0.00%
97	Laborers Local #876	0	0.00	0.00	0.00%	0.00	0.00%	0.00	0.00%	1	40.00	0.00	0.00%	0.00	0.00%	0.00	0.00%
98	Laborers Local #999	0	0.00	0.00	0.00%	0.00	0.00%	0.00	0.00%	677	237,645.71	37,748.71	15.88%	76,068.25	32.01%	17,849.00	7.51%
99	Laborers Local #1000	0	0.00	0.00	0.00%	0.00	0.00%	0.00	0.00%	3	24.00	8.00	33.33%	8.00	33.33%	0.00	0.00%
100	Massachusetts Laborers' District Council	0	0.00	0.00	0.00%	0.00	0.00%	0.00	0.00%	11	962.00	0.00	0.00%	85.00	8.84%	96.00	9.98%
101	Nevada Laborer's Local #872	0	0.00	0.00	0.00%	0.00	0.00%	0.00	0.00%	4	2,638.00	0.00	0.00%	0.00	0.00%	0.00	0.00%
102	Nevada Painters Local #159	0	0.00	0.00	0.00%	0.00	0.00%	0.00	0.00%	21	7,767.50	541.00	6.96%	2,339.50	30.12%	0.00	0.00%
103	Nevada Plasterer's & Cement Mason Local #797	0	0.00	0.00	0.00%	0.00	0.00%	0.00	0.00%	3	74.00	0.00	0.00%	36.00	48.65%	0.00	0.00%
104	New England Regional Council of Carpenters	0	0.00	0.00	0.00%	0.00	0.00%	0.00	0.00%	2	99.50	0.00	0.00%	0.00	0.00%	0.00	0.00%
105	New England Regional Council of Carpenters - Local #43	0	0.00	0.00	0.00%	0.00	0.00%	0.00	0.00%	1	649.61	0.00	0.00%	649.61	100.00%	0.00	0.00%
106	No. Cal Carpenters Local #9144	0	0.00	0.00	0.00%	0.00	0.00%	0.00	0.00%	1	16.00	0.00	0.00%	16.00	100.00%	0.00	0.00%
107	NY Bricklayers #2	0	0.00	0.00	0.00%	0.00	0.00%	0.00	0.00%	1	4.00	0.00	0.00%	0.00	0.00%	0.00	0.00%
108	Operating Engineers Local #4	0	0.00	0.00	0.00%	0.00	0.00%	0.00	0.00%	22	1,866.00	0.00	0.00%	20.00	1.07%	0.00	0.00%
109	Operating Engineers Local #478	0	0.00	0.00	0.00%	0.00	0.00%	0.00	0.00%	8	728.00	0.00	0.00%	183.50	25.21%	0.00	0.00%
110	Operative Plasterers and Cement Masons International Association, Local 40	0	0.00	0.00	0.00%	0.00	0.00%	0.00	0.00%	51	25,786.50	702.50	2.72%	6,248.00	24.23%	2,749.00	10.66%
111	Painters and Allied Trades IM	0	0.00	0.00	0.00%	0.00	0.00%	0.00	0.00%	13	4,108.50	121.00	2.95%	390.00	9.49%	0.00	0.00%
112	Painters and Allied Trades District Council #35	0	0.00	0.00	0.00%	0.00	0.00%	0.00	0.00%	152	60,921.50	2,907.00	4.77%	18,935.00	31.08%	2,183.00	3.58%
113	Pile Drivers Local #56	0	0.00	0.00	0.00%	0.00	0.00%	0.00	0.00%	18	2,114.00	0.00	0.00%	468.50	22.16%	180.50	8.54%
114	Plasterers and Cement Masons Local #534	0	0.00	0.00	0.00%	0.00	0.00%	0.00	0.00%	77	5,587.00	0.00	0.00%	1,603.50	28.70%	921.50	16.49%
115	Plumbers & Pipefitters #104	0	0.00	0.00	0.00%	0.00	0.00%	0.00	0.00%	386	204,636.37	9,678.50	4.73%	26,731.25	13.06%	23,115.00	11.30%
116	Plumbers & Pipefitters Local #777	0	0.00	0.00	0.00%	0.00	0.00%	0.00	0.00%	15	5,154.50	0.00	0.00%	144.00	2.79%	1,583.00	30.71%
117	Roofers #241	0	0.00	0.00	0.00%	0.00	0.00%	0.00	0.00%	1	8.00	0.00	0.00%	0.00	0.00%	0.00	0.00%
118	Roofers #248	0	0.00	0.00	0.00%	0.00	0.00%	0.00	0.00%	107	31,414.50	0.00	0.00%	6,084.75	19.37%	1,965.50	6.26%
119	Sheet Metal Workers #17	0	0.00	0.00	0.00%	0.00	0.00%	0.00	0.00%	5	349.50	0.00	0.00%	0.00	0.00%	0.00	0.00%
120	Sheet Metal Workers #19	0	0.00	0.00	0.00%	0.00	0.00%	0.00	0.00%	6	2,601.00	0.00	0.00%	0.00	0.00%	1,036.00	39.83%
121	Sheet Metal Workers #40	0	0.00	0.00	0.00%	0.00	0.00%	0.00	0.00%	32	14,972.00	0.00	0.00%	1,565.50	10.46%	0.00	0.00%
122	Sheet Metal Workers #63	0	0.00	0.00	0.00%	0.00	0.00%	0.00	0.00%	128	59,408.50	5,352.50	9.01%	11,291.00	19.01%	4,805.00	8.09%
123	Sheet Metal Workers #83	0	0.00	0.00	0.00%	0.00	0.00%	0.00	0.00%	2	17.00	0.00	0.00%	0.00	0.00%	0.00	0.00%
124	So. Cal Painters Local #256	0	0.00	0.00	0.00%	0.00	0.00%	0.00	0.00%	5	375.00	105.00	28.00%	135.00	36.00%	0.00	0.00%
125	Sprinkler Fitters #669	0	0.00	0.00	0.00%	0.00	0.00%	0.00	0.00%	43	35,776.50	2,267.50	6.34%	7,150.50	19.99%	1,591.00	4.45%
126	Teamsters' #404	0	0.00	0.00	0.00%	0.00	0.00%	0.00	0.00%	10	972.50	114.50	11.77%	32.00	3.29%	0.00	0.00%
127	Teamsters Local #25	0	0.00	0.00	0.00%	0.00	0.00%	0.00	0.00%	9	131.50	0.00	0.00%	4.00	3.04%	0.00	0.00%
128	United Union of Roofers, Waterprooferers and Allied Workers/ Local Union #12	0	0.00	0.00	0.00%	0.00	0.00%	0.00	0.00%	2	1,080.50	0.00	0.00%	0.00	0.00%	0.00	0.00%
129	United Union of Roofers, Waterprooferers and Allied Workers/ Local Union #9	0	0.00	0.00	0.00%	0.00	0.00%	0.00	0.00%	1	328.50	0.00	0.00%	328.50	100.00%	0.00	0.00%
Total - Unions		0	0.00	0.00	0.00%	0.00	0.00%	0.00	0.00%	5,996	2,370,604.51	178,569.46	7.53%	533,221.68	22.49%	197,373.67	8.33%
130	On-Site Design / Management	0	0.00	0.00	0.00%	0.00	0.00%	0.00	0.00%	622	370,359.33	55,918.90	15.10%	63,798.48	17.23%	41,231.55	11.13%
Total		0	0.00	0.00	0.00%	0.00	0.00%	0.00	0.00%	6,618	2,740,963.84	234,488.36	8.55%	597,020.16	21.78%	238,605.22	8.71%

Totals - Overall			
Group	Project Goals	Project To Date	Delta
Women	6.90%	8.55%	1.65%
Minority	15.30%	21.78%	6.48%
Veteran	8.00%	8.71%	0.71%

Notes:
 (1) Statistics include all workforce reports that were received by MGM as of September 30, 2018.
 (2) The total number of unique union workers that have worked on site is approximately 4,985. The 5,996 union workers identified above includes workers that have worked for multiple companies and/or multiple unions.