



Q2 2025 Report Massachusetts Gaming Commission

August 14, 2025

Revenue, Taxes, Lottery & Spend Update

MGM Springfield Q2 2025

Q2 2025 Gaming Revenue & Taxes

Month	Gaming Revenue	MA Taxes
April	\$23,539,213	\$5,884,803
May	\$25,431,179	\$6,357,795
June	\$22,833,766	\$5,708,442
Total	\$71,804,159	\$17,951,040

2025 YOY Gaming Revenue & Taxes

Year	Quarter	Table Games Revenue	Slots Gaming Revenue	Total Gaming Revenue	MA Taxes
2024	Q1	\$13,966,721	\$54,936,465	\$68,933,186	\$17,233,296
	Q2	\$12,978,593	\$54,139,847	\$67,118,440	\$16,779,610
	Q3	\$14,226,647	\$53,918,082	\$68,184,729	\$17,046,182
	Q4	\$12,788,884	\$55,123,010	\$67,911,894	\$16,977,973
	Total	\$54,030,844	\$218,117,404	\$272,148,248	\$68,037,062
2025	Q1	\$12,906,917	\$56,317,096	\$69,224,013	\$17,306,003
	Q2	\$13,317,810	\$58,486,348	\$71,804,159	\$17,951,040
	Q3	-	-	-	-
	Q4	-	-	-	-
	Total	\$26,224,727	\$114,803,444	\$141,028,171	\$35,257,043

Q2 2025 Sports Wagering Revenue



Month	Taxable Revenue	Taxes
April	(\$261,706)	\$0
May	(\$112,455)	\$0
June	\$59,369	\$8,905
Total	(\$314,792)	\$8,905

Month	Taxable Revenue	Taxes
April	\$3,931,035	\$786,207
May	\$4,901,528	\$980,305
June	\$5,161,059	\$1,032,212
Total	\$13,993,622	\$2,798,724

Q2 2025 Lottery

Month	Lottery Sales	% Change from Previous Year
April	\$119,588	11%
May	\$135,985	20%
June	\$182,712	45%
Total	\$438,285	26%

2025 YOY Lottery Sales

Year	Quarter	Lottery Sales	% Change from Previous Year
2024	Q1	\$414,543	-
	Q2	\$347,063	-
	Q3	\$410,768	-
	Q4	\$461,933	-
	Total	\$1,634,307	-
2025	Q1	\$399,038	(4%)
	Q2	\$438,285	26%
	Q3	-	-
	Q4	-	-
	Total	\$837,323	10%

Q 2 2025 Diversity Spend

Diversity Category	Annual Goal	Q2%	Q2 Spend
MBE Vendor Spend	10%	4%	\$271,770
VBE Vendor Spend	2%	3%	\$206,554
WBE Vendor Spend	15%	9%	\$630,043
Total	27%	16%	\$1,108,367

2025 Local Spend

Diversity Category	Q2%	Q2 \$
Local* Vendor Spend	42%	\$2,821,919
MA Vendor Spend	48%	\$3,248,536

Note: Total Biddable Spend excludes gaming vendors, utilities, insurance, banking fees/services, and other expenses outlined within the American Gaming Association Diversity Spending Exclusion List (MGM Springfield Diversity and Affirmative Junketing Program - Appendix D).

*Local Vendor Spend includes Springfield, Surrounding Communities and Western Massachusetts.

Q2 Procurement Efforts

Q2 Procurement Events:

- 6/16/2025 – MGC's Diverse & Small Vendor Opportunity Fair
- 6/18/2025 – CWE/Veteran's Affairs Matchmaker Event
- 6/30/2025 – GNEMSDC 2025 Supplier Diversity Golf Classic



Compliance

MGM Springfield Q2 2025

Q2 2025 Compliance

Month	Minors intercepted in Gaming Area and prevented from Gaming	Compared to 2024	# Change	Minors intercepted gaming	Compared to 2024	# Change	Minors intercepted consuming alcohol	Compared to 2024	# Change
Apr	3	24	-21	1	1	0	1	3	-2
May	6	23	-17	1	1	0	0	0	0
Jun	2	28	-26	0	3	-3	0	1	-1

- Longest time in Gaming Area – 53 minutes
- Shortest time in Gaming area – 21 seconds
- 2 underage were under 18 years old, the remaining 9 across the quarter, were between the ages of 18 – 20.

Employment

MGM Springfield Q2 2025

2025 Employment Numbers

2025	Goals	Q1 2025 %	Q1 2025 Total # of Employees	Q2 2025 %	Q2 2025 Total # of Employees	Q3 2025 %	Q3 2025 Total # of Employees	Q4 2025 %	Q4 2025 Total # of Employees
Minority	50%	52%	804	53%	821	%		%	
Veteran	2%	4%	68	5%	73	%		%	
Women	50%	41%	639	41%	636	%		%	
Springfield Residents	35%	37%	575	39%	604	%		%	
Western MA Residents	-	75%	1,165	75%	1,171	%		%	
MA Residents	-	77%	1,190	77%	1,198	%		%	
Total # Of Gaming Establishment Employees*	-		1,546		1,553				
Full Time	-		984		974				
Part Time	-		314		328				
On Call	-		248		251				

- MGM Springfield Sportsbook currently employs 9 team members.

Q2 2025 Workforce & Hiring Initiatives

Continued Property Tours and Presentations to Students of:

- Holyoke Community College (HCC) Line Cook Program
- Hampden County Sheriffs Department MassSTEP Culinary Arts

Career Fairs at:

- Bay Path University
- Westover Job Corps

Workforce Development:

- Dress for Success
- Transferrable skills workshop
- *Foot in the Door* program presentation & graduation

Workforce Community Outreach:

- *Fresh Start Career Day* hosted by the City of Springfield



**FRESH START
CAREER DAY!**

Actively Hiring Employers **Apprenticeship Opportunities** **CORI Sealing Assistance**

Open to ALL job seekers! Connect with hiring employers, explore new career opportunities, and access valuable resources to move forward! If you're looking to start fresh, advance your career, or need CORI sealing assistance, we can try to help you seal it to open new opportunities!

WEDNESDAY, MAY 21st, 2025

1:00 - 5:00 PM **Basketball Hall of Fame
Springfield, MA**

Pre-registration is highly encouraged for all job seekers, but is a requirement for people seeking CORI assistance. Please use the link or QR code below.

https://bit.ly/Fresh_Start_Career_Day or QR Code

MassMutual Community Legal Aid WNE School of Law HOLYOKE RECOVERY READY MASSHIRE western mass CORE



Community Outreach & Special Events

MGM Springfield Q2 2025

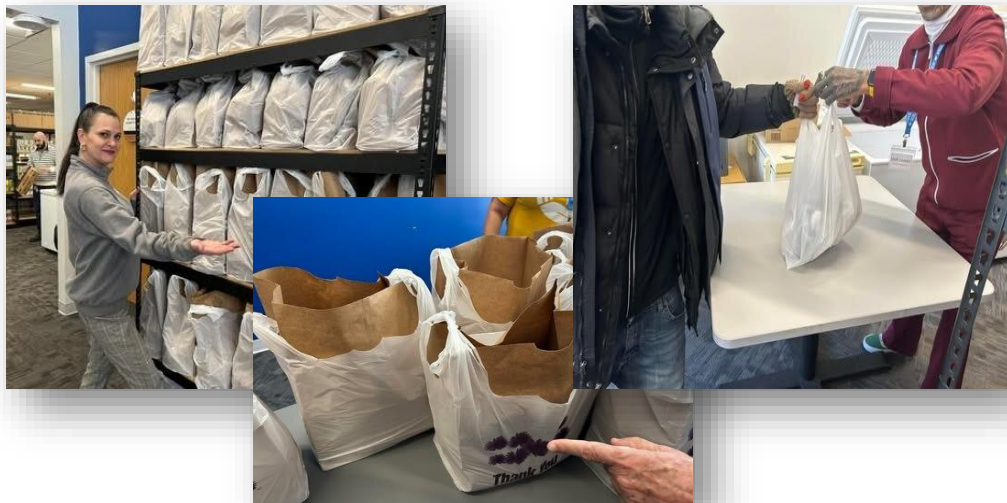
Q2 2025 Community Outreach & Special Events



Loaves & Fishes



Friends of the Homeless

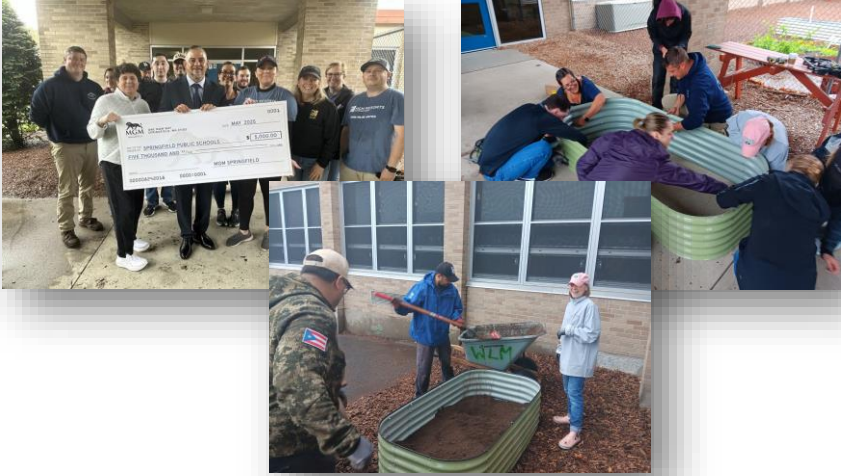


United Way Grocery Distribution



Revitalize CDC

Q2 2025 Community Outreach & Special Events



Springfield Public Schools



Memorial Day



Springfield Pride Parade/You Ball



YMCA Garden Cleanup



Wine Safari: Zoo at Forest Park

Q2 2025 Community Outreach & Special Events

- Partnered with Hunger Relief Organizations:
 - Served over 1,800 meals
 - Hundreds of grocery bags distributed
- Grants totaling more than \$160K to 14 community partners including:
 - ROCA
 - Tech Foundry
 - WestMass Eldercare, Inc.
 - Habitat for Humanity
 - Boys & Girls Club
 - Revitalize CDC
 - Springfield Museums
 - Grow Food Northampton



Entertainment

MGM Springfield Q2 2025

Q2 Entertainment at MassMutual Center



Upcoming Entertainment at MassMutual Center



Upcoming Entertainment at MassMutual Center

A promotional poster for WWE Raw. At the top, the WWE logo is on the left and the word 'RAW' is in large, metallic, 3D block letters on the right. Below the logo, a group of nine wrestlers is posed. From left to right: a Black man in a blue and white armored suit with a white fur collar; a Black man in a similar suit; a woman with long red hair in a black leather jacket; a man in a maroon jacket; a man in a red t-shirt and a red 'U.S. ME' cap; a man with a beard and sunglasses in a white shirt; a man with long blonde hair and a beard in a white shirt; a woman with dark hair in a black leather jacket; and a man in a black and white mask with a star on the forehead. The background is black with red horizontal stripes. At the bottom, the text 'SPRINGFIELD, MA' is in black, and 'MONDAY SEPTEMBER 15 7:30PM' is in large red letters. Below that, 'MassMutual Center' is in blue and black, and 'MASSMUTUALCENTER.COM' is in black.

SPRINGFIELD, MA

MONDAY SEPTEMBER 15 7:30PM

MassMutual Center

MASSMUTUALCENTER.COM

Q2 Entertainment at MGM Springfield & Symphony Hall

MICHAEL W. SMITH

**BEYOND THE
HORIZON
TOUR**



MICHAEL W. SMITH
APRIL 26

SYMPHONY HALL
SPRINGFIELD




**Legends
in Concert**

SATURDAY, JUNE 28
MGM Springfield
ARIA Ballroom

**A TRIBUTE TO
TAYLOR SWIFT
(LEGENDS' VERSION)**

FEATURING
ELIZABETH BURNETT

MGM
SPRINGFIELD



FREE MUSIC FRIDAYS

LIVE ON THE PLAZA


MAY 23	THE EAGLES EXPERIENCE <small>THE PREMIER EAGLES TRIBUTE SHOW</small>	JUL 18	BACK IN BLACK <small>THE TRUSSARDI EXPERIENCE</small>
MAY 30	AMERICAN HONEY <small>A MODERN COUNTRY ROCK'N' POP PARTY</small>	JUL 25	PETTY LARCENY <small>NEW ENGLAND'S TOP TON PETTY TRIBUTE</small>
JUN 06	THE GREAT ESCAPE <small>A TRIBUTE TO JOURNEY</small>	AUG 01	BELOW DECK <small>TRASHY ROCK FAVORITES</small>
JUN 13	NEON 90s <small>NEW ENGLAND'S PREMIER TRIBUTE TO THE 1990s</small>	AUG 08	BILLY & THE JETS <small>PLAYING THE HITS FROM LESTER PAIN & BILLY JOEL</small>
JUN 20	CATHEDRAL <small>ALL ERA VAN HALEN TRIBUTE</small>	AUG 15	JOHNNY SIXGUN <small>AUTHENTIC CLASSIC ROCK THE WAY YOU REMEMBER IT</small>
JUN 27	DOOKIE <small>AMERICA'S PREMIER GREEN DAY TRIBUTE</small>	AUG 22	TRAMPS LIKE US <small>THE #1 BRUCE SPRINGSTEEN TRIBUTE BAND</small>
JUL 04	TRAILER TRASH* <small>TODAY'S MODERN COUNTRY MUSIC "GPM" START</small>	AUG 29	HIGH NOON <small>A TRIBUTE TO LONERD SKYDIVER & SOUTHERN ROCK</small>
JUL 11	MALADO! <small>SPRINGFIELD'S TOP MAHOON DANCE, FUNK & MORE!</small>	SEP 05	AQUANETT <small>TRIBUTE TO MICHAEL BUCKLE & METAL</small>

**FRIDAY NIGHTS OUTDOORS ON
THE PLAZA STARTING AT 7:30PM.**

WEATHER PERMITTING. SCHEDULE SUBJECT TO CHANGE WITHOUT
NOTICE. VISIT MGMSPRINGFIELD.COM FOR ADDITIONAL INFO.

PRESENTING SPONSORS:

**MANSFIELD
PAPER COMPANY, INC.**



**HAYMOND
LAW FIRM**

Eastern States Examination presents

THE BIG E

Sept. 12 - 28

SYMPHONY HALL

**THERESA
CAPUTO**

MAY 30



*Theresa
Caputo*

LIVE

"THE EXPERIENCE"
FROM *Lifetime* RAISING SPIRITS



RYAN ADAMS

heartbreaker

'25 WORLD TOUR

07/11
SYMPHONY HALL
SPRINGFIELD, MA

SYMPHONY HALL
SPRINGFIELD

Upcoming Entertainment at MGM Springfield





Thank you
