

**21****COMMUNITY
MITIGATION
FUND**☐ check if joint application**APPENDIX F - 2021 Community Planning Grant Application****(formerly known as Non-Transportation Planning)****BD-21-1068-1068C-1068L-56499*****Please complete entire the Application*****1. PROJECT INFORMATION****a) NAME OF MUNICIPALITY/GOVERNMENT ENTITY/DISTRICT**

City of Chelsea & City of Revere, Massachusetts

b) PROJECT NAME (LIMIT 10 WORDS)

Contextualized ESOL & Digital Literacy Programs in Chelsea & Revere

c) BRIEF PROJECT DESCRIPTION (LIMIT 50 WORDS)

Our municipalities, in partnership with local community led organizations, are seeking funding to develop tailored curricula for *Contextualized ESOL Programs & Adult Digital Literacy* classes. Curricula will be geared towards industries at the casino's nexus, including hospitality, logistics, IT, healthcare and complemented by adult digital literacy programs for non-English speakers.

d) CONTACT PERSON(S)/TITLE (Persons with responsibility for this grant)

Karl Allen, Economic Development Planner, City of Chelsea Department of Housing & Community Development
Ben Cares, Senior Planner, City of Chelsea Department of Housing & Community Development

e) PHONE # AND EMAIL ADDRESS OF CONTACT PERSON(S)

kallen@chelseama.gov, 617-466-4190
bcares@chelseama.gov, 781-300-3016

f) MAILING ADDRESS OF CONTACT PERSON(S)

Department of Housing & Community Development, Room 100, 500 Broadway, Chelsea, MA 02150

2. IMPACT DESCRIPTION/CONNECTION TO GAMING FACILITY**a) Please describe in detail the impact that is attributed to the operation of a gaming facility.**

When the Encore Casino opened in June 2019, the local communities had high hopes that significant numbers of local residents would be hired into good living-wage jobs. 2019 saw one of the tightest job markets in a generation and competition for employees was intense. Encore hired 302 Chelsea residents, well below the community's goal of 500. In conversations with Encore, several factors were identified as being impediments to hiring more local residents from historically marginalized populations. Chief among these were the level of fluency in English and the digital skills needed to navigate the application process and succeed in the workplace.

When Encore furloughed 3000 employees in the summer of 2020, the impact rippled through the local communities. Unemployment rates surged in Chelsea from 2.8% in 2019 to 24.8% in June 2020. The November 2020 unemployment rate has decreased to 7.8%, but the size of the workforce has shrunk by 10.5% over those 6 months, as people have stopped looking for jobs. The situation in Revere is similar, unemployment was 2.9% in 2019, rose to 28% in June, receded to 8.3% in November, with a 13.9% reduction in the workforce. Residents throughout the region were and are struggling to pay rent and keep food on the table.

Encore is certainly not responsible for the impacts that Covid has had on the local economy and labor markets. But as one of the largest regional employers, who it hires and where those wages are spent deeply impacts the surrounding communities.

b) Please provide documentation, specificity or evidence that gives support for the determination that the operation of the gaming facility caused or is causing the impact (i.e. surveys, data, reports).

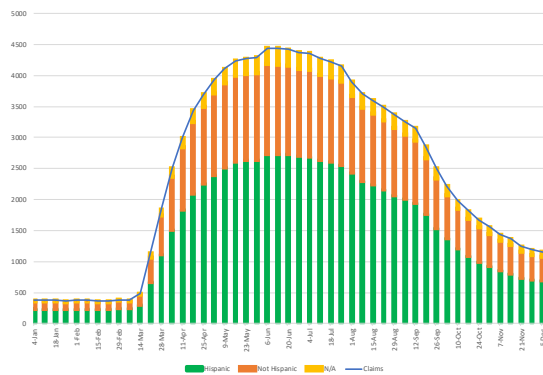
While data on the Social and Economic Impacts of Gambling in Massachusetts are not yet available for the Encore Casino from the Donahue Institute, the data from Plainville are informative. In particular, it was found that new employees spend new wages in their communities, supporting new economic activity. While Plainville created 556 new jobs, the public sector and private sector activity spurred by the casino created or supported approximately 2,400 jobs. The 4.3 multiplier, if applied to Encore's 3000 jobs, would result in almost 13,000 new jobs in the local economy that many local residents are ill equipped to take advantage of. This is largely due to their level of English proficiency and their abilities to interact with digital platforms during the hiring process and on the job were they to be hired.

As we begin to reopen society and reintegrate the Encore Casino into the local economy, all of these opportunities should be available to the large segment of the local population that has been historically marginalized and disproportionately impacted by the pandemic. This is true in the hospitality sector as well as other sectors where the new jobs will appear.

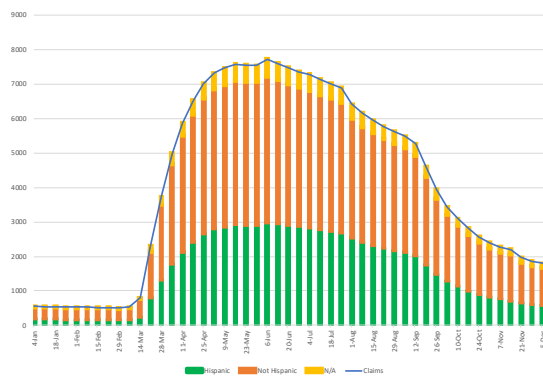
Hospitality workers have been among the hardest hit by the pandemic as the industry was largely shut down for a substantial portion of 2020. While overall unemployment has decreased since its peak during the summer of 2020, it is still high by historical standards and does not include the large number of people, primarily women, who have left the job market. The industry sector with the most continuing unemployment claims remains food preparation and serving.

The following graphs illustrate the unemployment trajectory in Chelsea and Revere. Though vastly improved, there are still over 1100 and 1800 people without work in the two cities as of the beginning of December 2020. These numbers include over 700 individuals in Chelsea and over 600 in Revere who self-report their ethnicity as Hispanic. These numbers do not include those who have dropped out of the workforce, which is almost 1200 in Chelsea and over 3000 in Revere.

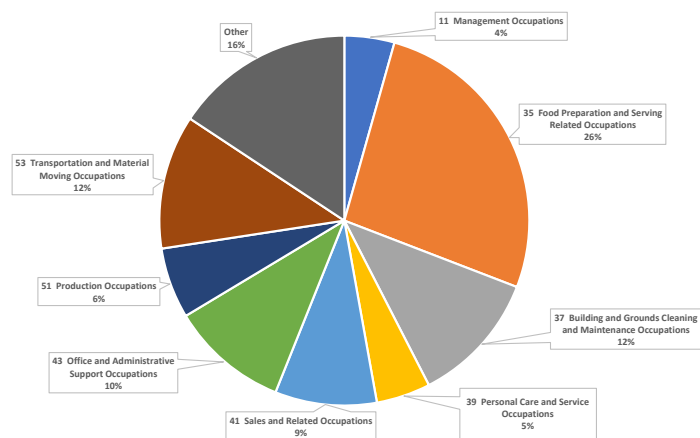
Chelsea Continued UI Claims by Week



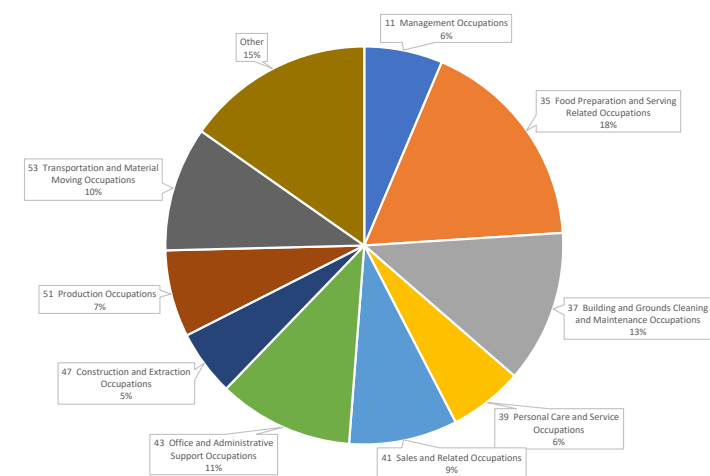
Revere Continued UI Claims by Week



Chelsea Continued UI Claims by Occupation
Week Ending 29 August 2020

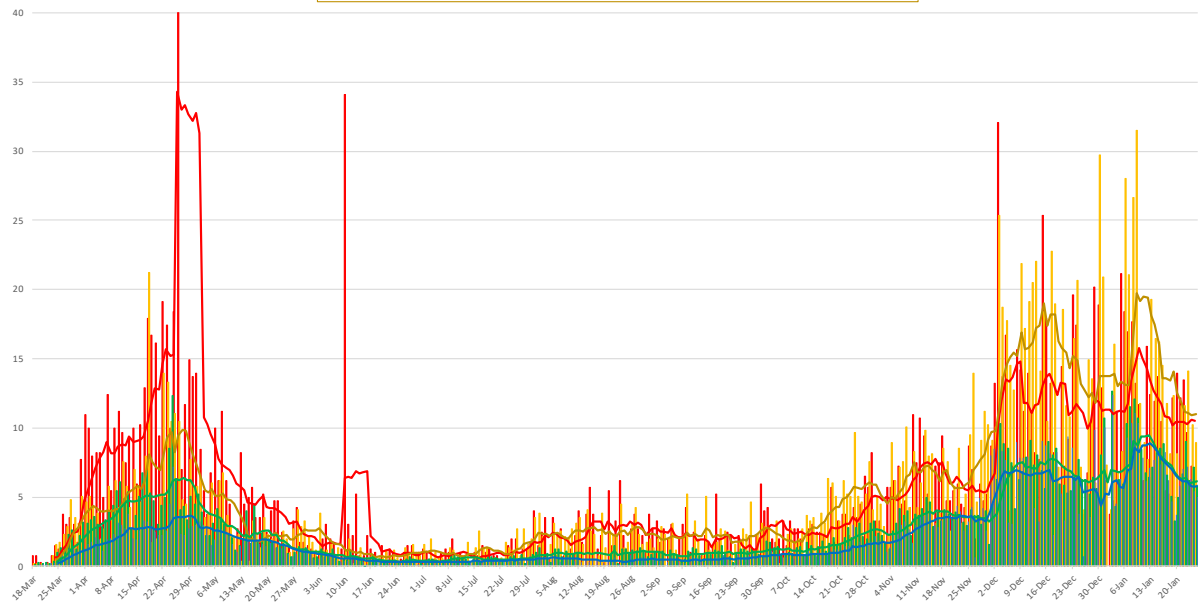


Chelsea Continued UI Claims by Occupation
Week Ending 5 December 2020



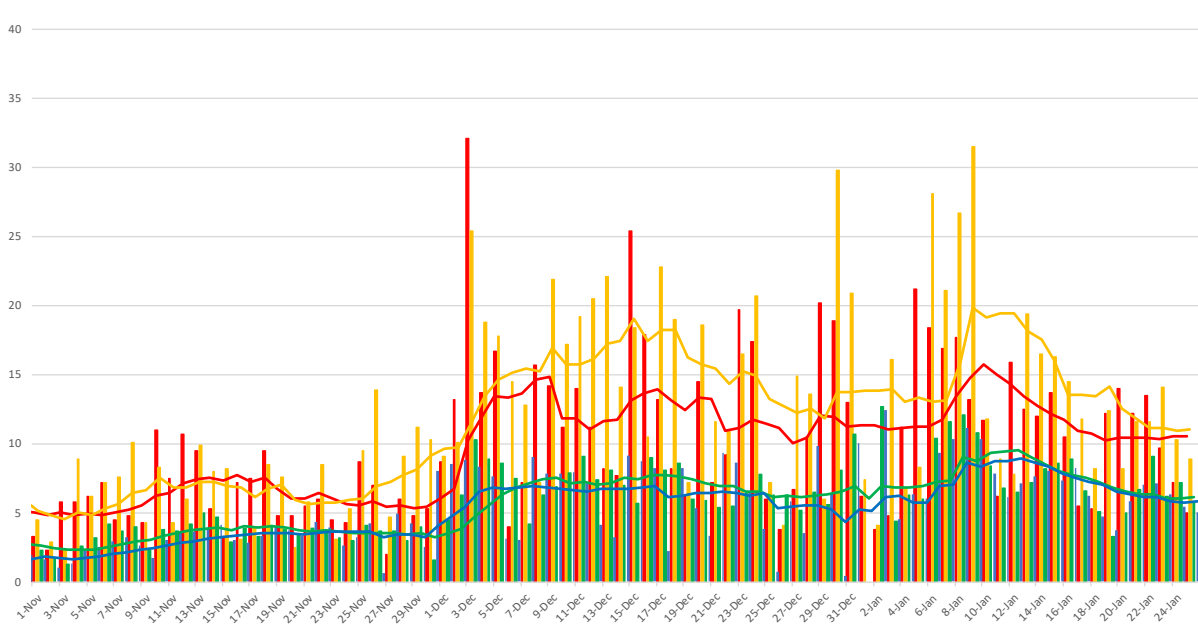
Chelsea and Revere have been two of the communities most impacted by Covid anywhere. The charts below show the disproportionate impact in both the April 2020 surge and the current December 2020 to January 2021 surge. Both cities are part of Suffolk County and their new case numbers reflected in Suffolk rates. The difference in new case rates reflects how much greater the impact was in communities north of Boston Harbor.

Chelsea, Revere, Suffolk, and Massachusetts
New Daily Cases per 10K Population with 7-Day Trends



*The daily infection rate on 26 April in Chelsea was 150 per 10,000 population and is clipped on this chart. This was due to a test reporting backlog. Data for Suffolk County were not reported between 12 and 18 August.

Chelsea, Revere, Suffolk, and Massachusetts
New Daily Cases per 10K Population with 7-Day Trends



c) How do you anticipate your proposed remedy will address the identified impact.

The development of contextualized ESOL and digital literacy curricula will empower members of the local community to better engage in the local economy, including being better positioned to apply for jobs at Encore, to be hired, and to succeed in the workplace. The resources being developed would be in the public domain and be available to every service provider who wishes to use them.

Through helping the local workforce elevate itself and become more competitive, the impact of Encore as a major local employer that is not hiring sufficiently from the local community can be mitigated. We are proposing creating targeted curricula for skills development and foundational training that will broadly benefit the local communities by enabling members to better pursue good jobs both at the casino and in the larger local economy.

We are focusing on areas where local jobs are likely to be during the transition to a post-Covid economy. This includes the casino, but considers the local economy more broadly. This approach is to address structural inequities that existed prior to the casino opening, but to which the casino is now contributing. By helping all area residents get good, living-wage jobs, we can create an environment where gaming has a positive impact on the communities that surround the casino.

Both Chelsea and Revere are currently engaged with MAPC in developing a regional digital equity plan. Everett is engaged with MAPC separately to create a similar plan. These plans are scheduled to be completed in June 2021 and will include recommendations on digital literacy. The proposed development of a digital literacy curriculum in this application will be the logical next step to that effort and will instantiate its recommendations to allow local service providers to deliver training that is better targeted to the community. Topics will be broken into modules that can be taken sequentially and include basic skills like setting up an email account, applying for a job online, and interacting with systems in the workplace.

Chelsea and Revere have substantial populations that will directly benefit from increasing English proficiency in the context of a workplace. This is also true for many other communities surrounding the Encore Casino as well as the MGM Casino. We envision creating contextualized ESOL content in up to 4 career pathways that focus on the vocabulary specific to a sector and conversational skills that are necessary in the workplace. After consultation with Bunker Hill Community College and local service providers, we are targeting career pathways in hospitality, health care, information technology, and logistics. There is broad consensus that these are the areas where community members for whom English proficiency is a barrier and who are most in need of good or better jobs will find them.

3. PROPOSED USE OF COMMUNITY PLANNING FUNDS (Please attach additional sheets/supplemental materials if necessary.)

a) Please identify the amount of funding requested.

The Cities of Chelsea & Revere respectfully request \$97,500 for the proposed project scope. Through screening of existing programs and consultant entities working within the disciplines of curricula development for ESOL (English of Speakers of Other Languages) and Adult Digital Literacy programs in the Greater Boston Area, the costs for the development of such curricula have been solicited. Coordination with English for New Bostonians, La Colaborativa, The Neighborhood Developers, MassHire, Northstar Digital Literacy, and Chelsea's Community School's Intergenerational Literacy Program, a robust scope and associated budget have been developed to carry out the creation of these curricula to be used in future, actionable, and meaningful impacts to our community.

b) Please identify below the manner in which the funds are proposed to be used. Please provide a detailed scope, budget and timetable for the use of funds.

Funding secured through this grant opportunity will be used to directly fund the City of Chelsea and the City of Revere's Project Consultant Team. In the attached Scope & Budget, we have outlined the distinct task deliverables under both the *Contextualized ESOL Curriculum & Adult Digital Curriculum* Tasks.

In order to commission a consultant for this project, the City of Chelsea will issue a competitive bidding process with the associated parameters for curricula design. Consultant selection will occur thereafter, through qualification review, due diligence, and under state mandated procurement laws and regulations.

c) Please provide documentation (e.g. - invoices, proposals, estimates, etc.) adequate for the Commission to ensure that the funds will be used for the cost of planning to mitigate the impact.

A request for quotes was sent, via email, to English for New Bostonians (ENB), located at 105 Chauncy Street, 4th Floor, Boston MA 02111.

ENB replied via email with an estimated nominal cost of \$25,000 for 20 hours per week for 8 weeks of course curricula. Therefore, we anticipate approximately \$156 per consultant hour (\$25,000 / 160 hours) of curricula design and complementary materials.

Through community organization input, the City of Chelsea and Revere mutually agreed upon four distinct contextualized ESOL pathways that would be carried out through classes offered twice (2) a week for fifteen (15) weeks, each totaling one hour and forty minutes, for a total of 30 classes per curricula pathway. This culminates to 100 hours total per curricula pathway (hospitality, logistics, healthcare, and IT) which equates to 400 total hours for Task 1 under the attached Scope & Budget.

Additionally, our municipalities centered around a similar course layout for the adult digital literacy program, outlined in Task 2. Through collaboration with Chelsea Public Schools and the City of Chelsea's community group La Colaborativa, we ascertained a curricula of 160 hours for an adult digital literacy program.

For a total of 560 hours of curricula development, which will also be complemented by the design of pre and post assessment surveys for course qualifications and comprehension, we estimated our final project ask to be $\$156 \times 560 \text{ hours} = \$87,360$ plus a nominal cost for assessment development from ENB of approximately \$10,000 for a Grant Total of \$97,500.

d) Please describe how the planning request will address the impact indicated. Please attach additional sheets/supplemental materials if necessary.

The Encore Casino, since its opening, projected nearly 4,000 jobs for the region's workforce development benefit. Further analysis of the Environmental Impact Report unearthed the Encore Casino's commitment to prioritizing and preferencing Chelsea & Revere residents for its employment opportunities. Unfortunately, without robust programs that help to enable residents overcome special language needs and digital literacy skill sets, the occupations offered by the casino could not be met with competitive applications and interests by Chelsea & Revere's most disenfranchised residents. Moreover, the covid-19 pandemic has borne undue pressure on these groups of people, who now suffer from significantly increased unemployment rates and income.

Our belief is that through this planning exercise of curricula development within key industries and underpinned by digital literacy comprehension, we can enable our workforces to truly take hold of the opportunities set forth by the Encore Casino, and to assist the casino in meeting its commitments outlined as a part of its Environmental Impact Report, Surrounding Community Agreement, and Arbitration of Award to Chelsea & Revere.

e) For joint grant requests, please state the amount requested for the joint request. Please also state the amount of any Regional Planning Incentive Award requested and provide separate detail on the use of these additional funds.

This application involves a joint grant request for the municipalities of Chelsea & Revere. However, funding need not be dispersed between the two communities, as the City of Chelsea is committed to acting as the primary fiscal agents of said grant funds.

The City of Chelsea's Department of Housing & Community Development will act as the internal fiscal agent and grant status reporter for this grant. All approvals of consultants, project timelines, project spending, and the execution of the project scope will occur with explicit acceptance and guidance by the City of Revere's Office of Strategic Planning & Economic Development.

Moreover, our grant ask is \$97,500, and therefore does not require consideration of the Regional Planning Incentive Award. Should the Mass Gaming Commission choose to award this amount to the grant project, our municipalities accept its supplemental nature to the base grant award amount. Moreover, adjustment to a budget and scope to include such an additional award is possible.

4. CONSULTATION WITH REGIONAL PLANNING AGENCY (RPA)/NEARBY COMMUNITIES

a) Please provide details about the Applicant's consultation with the Regional Planning Agency serving the community and nearby communities to determine the potential for cooperative regional efforts regarding planning activities.

The City of Chelsea & Revere have coordinated with several regional entities in order to determine the potential for cooperative regional efforts regarding planning activities.

Primarily, coordination with MassHire has resulted in complementary applications under this round of Mass Gaming Commission Community Mitigation Funds. MassHire is seeking a Workforce Development grant to continue its operation as a regional economic development and workforce development entity. Our ongoing collaboration will yield meaningful input to both proposed projects. To codify this collaborative effort, the City of Chelsea's City Manager signed a letter of support for their grant proposal.

Moreover, the City of Chelsea & Revere have consulted with the Metropolitan Area Planning Council's Senior Economic Development Planners, Josh Eichen and Raul Gonzales. A letter of support was sent along to the MAPC's Executive Director Marc Draisen, who, unfortunately was unable to execute said letter in time for our submission of this grant. We do anticipate the communication of this letter of support to the Mass Gaming Commission after the deadline of the application to demonstrate our regional collaboration with the MAPC.

5. MATCHING FUNDS FROM GOVERNMENTAL OR OTHER ENTITY

a) Please demonstrate that the governmental or other entity will provide significant funding to match or partially match the assistance required from the Community Mitigation Fund.

The City of Chelsea & Revere are not contributing any funding to these projects, beyond the in kind hours of our staff. This budget season has been hued by a necessity to cut down on funding in all areas, and therefore neither municipality will be able to contribute additional funds towards this project.

b) Please provide detail on what your community will contribute to the planning projects such as in-kind services or planning funds.

The City of Chelsea & Revere are not contributing any funding to these projects, beyond the in kind hours of our staff. This budget season has been hued by a necessity to cut down on funding in all areas, and therefore neither municipality will be able to contribute additional funds towards this project.

6. RELEVANT EXCERPTS FROM HOST OR SURROUNDING COMMUNITY AGREEMENTS AND MASSACHUSETTS ENVIRONMENTAL POLICY ACT (MEPA”) DECISION

a) Please describe and include excerpts regarding the impact and potential mitigation from any relevant sections of the community's Host or Surrounding Community Agreement.

The "Surrounding Community Arbitration Between Wynn, MA LLC and the City of Chelsea" filed with the Massachusetts Gaming Commission provides information on Wynn LLC's *Educational and Social Impacts* and *Section 3: Jobs Program* on page 9 and page 13, respectively.

Wynn BAFO explicitly outlines its intent for "outreach to Chelsea residents" and "participation in a job readiness training program, and preference to qualified Chelsea residents for jobs at the Wynn casino." The Wynn BAFO provides this support in lieu of payment of such purposes, under the initial arbitration between the City of Chelsea and Wynn, LLC. However, the City of Chelsea respectfully requests that Wynn, LLC reconsider its initial stance on committing funding to efforts involving workforce development for the betterment and qualification of Chelsea and Revere residents who might prosper from the job security and job creation set forth by the casino. To reinforce this sentiment, it is important to note that Wynn LLC also mentioned that "jobs which the Wynn casino would bring to Chelsea would alleviate poverty, although that benefit would probably not be uniform, especially among Chelsea's undocumented immigrant population." The casino acknowledges the deficiencies in Chelsea's residents as it pertains to their qualifications for the jobs created by the casino, therefore, we urge the casino to contribute this portion of grant funding to allay these concerns and bring together a holistic model for supporting the employment of Chelsea and Revere's most disenfranchised populations.

Moreover, under *Section 3: Jobs Program* in the initial arbitration, Wynn LLC acknowledges that "Chelsea desires to help its community members and residents who are interested in attaining employment at the Project. The parties agree that Chelsea's demographic is an appropriate, suitable, desirable and employable work force for the Project, and therefore it is mutually beneficial to provide a structured program to educate Chelsea's residents about available employment opportunities." This section is contextualized by the actual construction of the casino, however, we believe this should be extended to encompass jobs created at the casino regarding its ongoing functionality as a regional giant overseeing a significant portion of the hospitality, logistical, healthcare, and IT industries. Therefore, funding awarded under this particular grant program is warranted to help realize these core beliefs within the initial arbitration.

Funding and participation by the Wynn Casino under this initial arbitration have been insufficient to mitigate the gaps in necessary workforce development programs for Chelsea and Revere's residents, in which the Wynn casino claims ready participation and support. Therefore, the City respectfully petitions the Commission for \$97,500 in Community Planning Grant Program funds for this project. Without support from the Commission in this amount, the City of Chelsea and Revere will be unable to effectuate necessary education of its residents in relationship to jobs created at the nexus of the casino.

b) Where applicable, please also briefly summarize and/or provide page references to the most relevant language included in the most relevant MEPA certificate(s) or comment(s) submitted by the community to MEPA.

Per our review of all documents associated in the initial Environmental Impact Report and subsequent MEPA certificates or comments submitted by the community to MEPA, we did not locate any relevant language associated with jobs, workforce development, or economic development within the context of employment for residents within surrounding communities to the casino. We have developed a strong narrative through review of the initial arbitration of award, however, such a proposal of a public service and workforce development planning exercise does not fit in with the criteria and topics discussed within MEPA documentation, certificates, or public comments.

c) Please explain how this impact was either anticipated or not anticipated in that Agreement or such MEPA decision.

The impact of the casino in catering its employment opportunities to demographics outside of Chelsea and Revere's most disenfranchised communities was anticipated in the initial arbitration of award but not within MEPA's decision or the Environmental Impact Report package submitted to MEPA. The anticipation of gaps in preferential employment to the casino is outlined in response 6a of this application and is referenced under the initial arbitration of award.

d) If planning funds are sought for mitigation not required under MEPA, please provide justification why funding should be utilized to plan for such mitigation.

Planning funds are sought for mitigation not required under MEPA. However, the City of Chelsea and Revere have made a strong case and constructed a narrative based in factual unemployment data and financial necessity for our mutual municipalities.

The impacts of the Covid-19 pandemic are unprecedented. Municipalities across the nation are struggling to thin out their existing public service programs in order to meet budgetary requirements set forth by their respective government structures to allay the worst of revenue deficits experienced by many. The City of Chelsea and Revere, due to their workforce and economic characteristics, are struggling to provide meaningful public service programs and robust post-pandemic economic recovery strategies because of these financial limitations.

Funding secured through this grant will aid in a collaborative mission to educate Chelsea and Revere residents in a way that prepares them for the reopening of industries across Massachusetts's, pending the roll out of a recovery program and solid vaccination rate executed by the United States, the State of Massachusetts, and through local efforts. The Encore Casino can provide effective measures to reduce unemployment rates for the most marginalized demographics experiencing unemployment and significant financial debt due to the Covid-19 pandemic and associated economic downturn.

7. INTERNAL CONTROLS/ADMINISTRATION OF FUNDS

a) Please provide detail regarding the controls that will be used to ensure that funds will only be used to address the impact.

The City of Chelsea, through its Department of Housing & Community Development, will utilize the funds to commission a qualified consultant to undertake the development of curricula in Task 1 and Task 2 as outlined in the Scope & Budget attached to this application. In addition to a project management team that specializes in curricula development for communities like Chelsea and Revere, the City of Chelsea maintains the internal controls, expertise, and staffing necessary to attain compliance with all grant terms and applicable laws.

This project will include the procurement of a consultant contract with a qualified consultant firm. All procurement activities shall occur under the oversight of the City of Chelsea's Chief Procurement Officer subject to M.G.L, c. 30B. Under M.G.L., Ch. 30B, the City of Chelsea shall abide by the established uniform procedures of procurement when contracting for supplies, services, and real property. All contracting procedures for this project have been established to adhere to all federal and state mandated internal financial and administrative controls.

This effort will be managed by the City of Chelsea's Economic Development Specialist and Senior Planner, in partnership with the City of Revere's Project Manager and Senior Economic Development Planner. Combined, these four staff persons impart a strong comprehension of the project goals and an ability to carry out the proposed scope within the temporary and financial constraints set forth by the casino.

b) Will any nongovernmental entity receive funds? If so, please describe. If non-governmental entities will receive any funds, please describe what reporting will be required and how the applicant will remedy any misuse of funds.

Financially, the City of Chelsea's organizational structure is rooted in a system of checks and balances. No one employee, nor single department, may unilaterally authorize the issuance of payment of disbursement of funds. Under City of Chelsea policy, approvals of invoices and disbursements of funds must be collectively approved by the Department of Housing & Community Development, the Chief Procurement Officer, and the City's Auditor, to ensure conformance with professional financial practices. Copies of all procurement documents will be submitted to the Commission for verification when the City submits to the Commission its quarterly progress reports.

The City of Chelsea reserves the right to remedy the misuse of funds by any of its contractors through a comprehensive process of legal recourse specified in its standard contract terms and conditions. These terms and conditions will be provided to the Commission. Reporting requirements of the contractor will comprise a weekly report summary of expended funding and dedicated hours towards distinct Task Deliverables set forth in the project Scope & Budget. Any diversion from these mandated reporting requirements will trigger a formal review of the consultants financing and potential delays to dispersal of payment until said diversions have been rectified by the City of Chelsea's system of checks and balances.

**NO COMMUNITY IS ELIGIBLE FOR MORE THAN ONE COMMUNITY
PLANNING REGIONAL PLANNING INCENTIVE AWARD.**

8. CERTIFICATION BY MUNICIPALITY/GOVERNMENTAL ENTITY

On behalf of the aforementioned municipality/governmental entity I hereby certify that the funds that are requested in this application will be used solely for the purposes articulated in this Application.

By
:

Date:

2/1/21

Signature of Responsible Municipal
Official/Governmental Entity

Thomas G. Ambrosio

(print name)

City Manager

Title:

Scope : City of Chelsea & City of Revere Community Planning Grant

Project Task Description	Deliverables	Deliverable Due Date	Total Grant
Task 1: Contextualized ESOL Curriculum			
a. Hospitality Pathway	100 hour curriculum content for hospitality contextualized ESOL Program	5/1/2022	\$ 15,625
b. Logistics Pathway	100 hour curriculum content logistics contextualized ESOL Program	5/1/2022	\$ 15,625
c. Healthcare Pathway	100 hour curriculum content for healthcare contextualized ESOL Program	5/1/2022	\$ 15,625
d. Information Technology Pathway	100 hour curriculum content for information technology (IT) contextualized ESOL Program	5/1/2022	\$ 15,625
d. Pre & Post Assessments	Pre and post assessments to ascertain level of completion and successful comprehension of program course	6/1/2022	\$ 7,500
Total Task 1 Cost			\$ 70,000
Task 2: Digital Literacy Curriculum			
a. Adult Digital Literacy Curriculum	160 hour curriculum for beginner and intermediate adult digital literacy program	7/1/2022	\$ 25,000
a. Pre & Post Assessment	Pre and post assessments to ascertain level of completion and successful comprehension of program course	7/1/2022	\$ 2,500
Total Task 2 Cost			\$ 27,500
TOTAL PROJECT COSTS			\$ 97,500

Budget : City of Chelsea & City of Revere Community Planning Grant			
			Total Task (Grant)
	Project Team Hours		
	Consultant		
Hourly Rate	\$156.00		
Task 1: Contextualized ESOL Curriculum	Hours	Total	
a. Hospitality Pathway	100	\$ 15,624.96	\$ 15,625
b. Logistics Pathway	100	\$ 15,624.96	\$ 15,625
c. Healthcare Pathway	100	\$ 15,624.96	\$ 15,625
d. Information Technology Pathway	100	\$ 15,624.96	\$ 15,625
d. Pre & Post Assessments	48	\$ 7,500.00	\$ 7,500
Total Task 1 Cost	449	\$ 70,000	\$70,000
Task 2: Digital Literacy Curriculum			
a. Adult Digital Literacy Curricum	160	\$ 25,000.00	\$ 25,000
a. Pre & Post Assesssment	16	\$ 2,500.00	\$ 2,500
Total Task 2 Cost	176	\$27,500.00	\$27,500
TOTAL PROJECT COSTS			\$97,500



Massachusetts Gaming Commission
101 Federal St, 12th Floor
Boston, Massachusetts 02110

Re: *Letter of Support*

Dear Commissioners,

On behalf of La Colaborativa, I submit this letter of support in regard to the City of Chelsea and the City of Revere's Community Planning Grant Application via the Massachusetts's Gaming Commission Community Mitigation Fund Program. Our friends, family, and community members have struggled to recover from the pandemic and its effect on their livelihoods. Any funding that the Encore Casino can contribute, as it relates to enhancing our residents opportunities for jobs at the Encore Casino within the industries of hospitality, logistics, healthcare, and information technologies would help to solve many barriers our residents have to accessing jobs at the casino.

A Community Planning Grant will allow for meaningful improvements to be made to existing ESOL and Digital Literacy programs through tailored and contextualized approaches in designing curriculum that will develop a workforce well postured to work at the Encore Casino and within the hospitality, logistics, healthcare, and information technologies. Moreover, accentuating such workforce language skill sets with a robust digital literacy program will impart greater upward mobility for otherwise financially and economically oppressed demographics within Chelsea and our sister community, Revere.

We do hope you will consider the City of Chelsea and Revere's application for funding and we look forward continuing our work with the City of Chelsea and our beloved community.

Sincerely,

A handwritten signature in black ink, appearing to read "Dinanyili Paulino", is written over a red dashed line.

Dinanyili Paulino
La Colaborativa



CITY OF REVERE

Brian M. Arrigo
Mayor

January 28, 2021

Cathy Judd-Stein, Chair
Massachusetts Gaming Commission
101 Federal St, 12th Floor
Boston, MA 02110

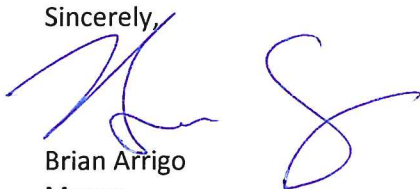
Dear Chair Judd-Stein:

On behalf of the City of Revere, I am writing in support of a joint application for grant funding from the City of Chelsea, in partnership with the City of Revere and The Neighborhood Developers (TND) for a 2021 Community Mitigation Fund Community Planning Grant. This proposal for contextualized ESOL curriculum development and digital literacy curriculum development will serve as a significant investment in the capacity of our local workforce systems to build economic resiliency among our residents. This capacity will be critical as our communities work to support the re-entry, employment, and upskilling of residents heavily impacted by furloughs and layoffs at Encore Boston Harbor and within our region's hospitality industry.

With Revere's unemployment rate topping 27% in June 2020 and remaining among the highest in the Commonwealth, the City of Revere recognizes that strong and effective regional partnerships will be critical to economic recovery. This project represents a deliberate and responsive approach to identifying and addressing common barriers to employment and training for residents in Chelsea, Revere, and other surrounding communities of Encore Boston Harbor; and it will also yield significant learning that can be scaled to the benefit of communities across the Commonwealth.

As one of Encore's surrounding communities, the City of Revere is committed to working with its regional partners to support workers impacted adversely by the COVID-19 pandemic. The City of Revere offers its full support for this Community Planning Grant application and commits to working with all partners to ensure the success of this project.

Sincerely,



Brian Arrigo
Mayor
City of Revere



CITY OF CHELSEA, MA
Office of the City Manager

City Hall, 500 Broadway, Room 302 · Chelsea, MA 02150
Phone: 617.466.4100 · Fax: 617.466.4175 · Email: tambrosino@chelseama.gov

Thomas G. Ambrosino
City Manager

February 1, 2021

Massachusetts Gaming Commission
101 Federal St, 12th Floor
Boston, Massachusetts 02110

Re: *Letter of Support*

Dear Commissioners:

On behalf of City of Chelsea, I am writing in support of the joint Community Planning Grant Application from the Cities of Chelsea and Revere. Our two communities have been severely impacted by the economic downturn caused by the COVID -19 pandemic. Any funding we can secure in order to mitigate the worst of these impacts is crucial to our recovery and the financial security of our residents.

The proposed Community Planning Grant will allow for meaningful improvements to be made to existing ESOL and Digital Literacy curriculum programs in order to ensure our workforce is well-positioned for employment at the Encore Casino and within the hospitality, logistics, healthcare, and information technologies industries. Moreover, accentuating workforce language skill sets with a robust digital literacy program will impart greater upward mobility for otherwise financially and economically oppressed demographics within both Chelsea and Revere.

Chelsea is pleased to align our efforts with the City of Revere and with local partners at The Neighborhood Developers, La Colaborativa and MassHire. We know that this planning exercise, should it be approved, will address the most critical issues facing our communities in regard to workforce development and post-pandemic economic recovery.

I thank you in advance for your consideration of this proposal. If you have any questions, please contact Karl Allen, Planner & Economic Development Specialist with the City of Chelsea's Department of Housing & Community Development at kallen@chelsema.gov or (617) 466-4190.

Sincerely,

Thomas G. Ambrosino
City Manager



January 26, 2021

Cathy Judd-Stein
Chair
Massachusetts Gaming Commission
101 Federal Street, 12th Floor
Boston, MA 02110

Dear Chair Judd-Stein,

The Neighborhood Developers (TND) is pleased to submit this letter of support for the City of Chelsea's Community Planning Grant application. The City of Chelsea, in collaboration with the City of Revere and TND, is proposing contextualized ESOL curriculum development and digital literacy curriculum development. Community Planning Grant funds will help community-based organizations in both cities create stronger training pathways to jobs. This project addresses the impact of furloughs and layoffs at Encore Casino, which have created a need for these training pathways in our communities.

The Neighborhood Developers (TND) is a Chelsea-based community development nonprofit with a mission to support community members in their efforts to secure a stable home, achieve economic mobility, and determine their own future. TND is the lead agency of CONNECT, an economic mobility partnership helps people achieve sustainable living wage jobs and financial health and well-being by partnering to provide essential skills, knowledge and social capital in one central and supportive location. Since its launch in 2012, CONNECT has developed a track record for delivering strong economic mobility results for low-income first- and second-generation immigrants, our priority population. From 2017 to 2019, CONNECT has placed 990 clients into jobs with a median wage of \$16.00/hr.

Our home communities of Chelsea and Revere are among Massachusetts' top ten communities for COVID-19 infection on a per capita basis. Chelsea in particular has received national attention as an early and sustained COVID-19 hotspot. The pandemic has also devastated the local economies of both Chelsea and Revere with each city reaching ~24% unemployment in mid-2020. In November 2020, Chelsea's unemployment rate was 7.8% - more than a threefold increase from the pre-pandemic rate of 2.2%. Similarly, Revere's November 2020 unemployment rate was 8.3%, compared to just 2.4% a year prior. With much of Encore Casino's workforce furloughed or laid off, we are seeing the need for pathways to job training programs. The proposed Community Planning Grant would help us meet this need by developing ESOL and digital literacy curricula.

TND fully supports this Community Planning Grant application and eagerly awaits the Massachusetts Gaming Commission decision on its funding.

Sincerely,

Rafael Mares
Executive Director

