



19

COMMUNITY
MITIGATION
FUND

APPENDIX D

2019 Transportation Planning Grant Application

BD-19-1068-1068C-1068L-33629

Please complete the entire application.

☒ Check if a joint application

1. NAME OF MUNICIPALITY(IES)/GOVERNMENT ENTITY(IES)/DISTRICT(s)

City of Revere & Town of Saugus

2. DEPARTMENT RECEIVING FUNDS

Department of Strategic Planning and Economic Development

3. LEAD APPLICANT - NAME AND TITLE OF INDIVIDUAL RESPONSIBLE FOR HANDLING OF FUNDS (CONTRACT MANAGER)

Robert O'Brien Director of Strategic Planning and Economic Development

4. ADDRESS OF INDIVIDUAL RESPONSIBLE FOR HANDLING OF FUNDS (CONTRACT MANAGER)

Department of Strategic Planning and Economic Development
City Hall
281 Broadway
Revere, MA 02151

5. PHONE # AND EMAIL ADDRESS OF INDIVIDUAL RESPONSIBLE FOR HANDLING OF FUNDS (CONTRACT MANAGER)

781-286-8184

robrien@revere.org

6. NAME AND CONTACT INFORMATION OF JOINT APPLICANTS - MUNICIPALITIES /GOVERNMENT ENTITIES/DISTRICTS

City of Revere
281 Broadway
Revere, MA 02151
781-286-8111

Town of Saugus
298 Central Street
Saugus, MA 01906
781-231-4111

7. NAME AND TITLE OF INDIVIDUAL(S) AUTHORIZED TO COMMIT FUNDS ON BEHALF OF MUNICIPALITY(IES)/GOVERNMENTAL ENTITY(IES)

Mayor Brian Arrigo: 781-286-8111 barrigo@revere.org
Town Manager Scott Crabtree: 781-231-4111 scrabtree@saugus-ma.gov

8. ADDRESS OF INDIVIDUAL(S) AUTHORIZED TO COMMIT FUNDS ON BEHALF OF

2019 TRANSPORTATION PLANNING GRANT APPLICATION

BD-19-1068-1068C-1068L-33629

Page 2

MUNICIPALITY(IES)/GOVERNMENTAL ENTITY(IES)

**Mayor Brian Arrigo
City of Revere, MA
281 Broadway
Revere, MA 02151**

**Town Manager Scott Crabtree
Town of Saugus
298 Central Street
Saugus, MA 01906**

9. PHONE #, EMAIL, AND ADDRESS OF INDIVIDUAL(S) AUTHORIZED TO COMMIT FUNDS ON BEHALF OF MUNICIPALITY(IES)/GOVERNMENTAL ENTITY(IES)

**Mayor Brian Arrigo
City of Revere, MA
281 Broadway
Revere, MA 02151**

**Town Manager Scott Crabtree
Town of Saugus
298 Central Street
Saugus, MA 01906**

10. NAME OF GAMING LICENSEE

Encore Boston Harbor (Everett)

1. IMPACT DESCRIPTION

Please describe in detail the transportation related impact that is attributed to the construction or operation of a gaming facility. Please provide support for the determination that the construction or operation of the gaming facility caused, is causing or may cause the impact.

In 2018, the Massachusetts Gaming Commission awarded a joint Transportation Planning grant of \$425,000 to the Town of Saugus and the City of Revere. This grant fund was intended to fund for one year, a transportation planning specialist and to begin the process of preliminary design of certain smaller components of the Route 1 Improvement Project. The communities were unable to find a qualified party for this position and with the approval of MGC instead engaged a consultant traffic engineer to undertake the effort. BETA of Norwood, MA has been engaged by the communities and has been working on this effort for several months. This firm is focused on achievable transportation improvement projects that are intended to mitigate anticipated traffic increases generated by the Encore Boston Harbor Casino in Everett on the Route 1 – Route 99 corridor as well as along Routes 1A, 107 and 16. The City of Revere and the Town of Saugus are applying for an additional 2019 Joint Transportation Planning Grant from the MassGaming Commission (MGC) to continue this initiative and to advance certain achievable elements of long planned improvements to the Route 1 project and other elements of their transportation network impacted by the operation of the Encore Boston Harbor Casino. The communities seek \$425,000 for this purpose.

The City of Revere and the Town of Saugus have long been plagued by the woeful inadequacy of outmoded old Route 1. The highway is subject to ever increasing traffic volumes and virtual gridlock during attenuated morning and evening rush hours. A number of Route 1 interchanges have very high accident rates because of this increased traffic. The City and the Town believe the Wynn Casino will bring substantial volumes of new traffic onto the Route 1-Route 99 corridor.

Saugus believes that to a lesser but still significant degree, some casino generated traffic may bypass lower Route 1 exiting the highway onto Walnut Street-Central Street or Main Street-Center Street and on to Winter Street then Ballard Street and then Route 107 as an alternative way to access route 16 towards Everett.

Revere will be negatively impacted by traffic heading to Route 16 west from Route 1 south and some northeast originated traffic will choose to follow route 107 through the heart of the city to access route 16 west. And of course, Revere will undoubtedly see an increase of traffic along already overtaxed route 1A as residents of North Shore coastal communities use that route to connect to route 16 and the Wynn Casino.

The City and the Town hope to work together and enlist the support of other nearby impacted communities, so as to affect key roadway improvements along these arterials that will help alleviate existing traffic and offset anticipated traffic problems resulting from increased volume attributable to the new casino.

2. PROPOSED USE OF TRANSPORTATION PLANNING FUND

The previous grant of \$150,000 has been used to focus primarily on the Route 1 Project and enable the consultant team to become more acquainted with its history and related documents such as the submitted EIR/EA and the Secretary's decision/findings. A strategic outreach program to solidify project goals, and then update the Route 1 Project's Transportation Improvement Program (TIP) status is being crafted. The review of Route 1 project plans and materials primary focus on the transportation aspects and justifications for the project (capacity issues, collision issues, access issues, overall deficiencies of the current facility). The review of past positions on land use, environmental resources and constraints, and potential regulatory issues were included.

The follow-up grant of \$275,000 is being used to collect current traffic data and crash data at key locations, review/assess the corridor's geometry/right of way, establish a Vissim traffic model for the project corridor (Route 1 between Route 60 and Route 99), assess current traffic operations, update conceptual designs to depict recommendations for improvements and to develop related budgetary estimates of probable construction cost for planning purposes.

It is anticipated that improvements will need to be made incrementally given that previous efforts suggest that likely Route 1 improvements would cost in excess of \$175 million as estimated based on a concept developed over 6 years ago. Also the implications of current (and available right of way) will be a large factor. However, the need for the implementation of some improvement measures in the near term is heightened by the Encore Boston Harbor Casino; and therefore, an incremental approach will be followed.

The requested grant will continue this effort to the next logical stage; to get the Route 1 project begun by completing preliminary design for the Route 1 – Route 99 interchange, and working to get the project in the TIP and in line for funding in the nearer term.

3. PROPOSED MITIGATION (Please attach additional sheets/supplemental materials if necessary.)

a) Please identify the amount of funding requested.

\$425,000

b) Please identify below the manner in which the funds are proposed to be used.

The 2019 Transportation Planning Grant will be used to build on the pursuit and development of transportation road network improvements along the Route 1 project corridor and related elements including additional deficient roadway and intersection locations identified as part of the VISSIM analysis. The central project is the Route 1 and Route 99 interchange. The funds will be used to create a preliminary design for improvement of this critical arterial interchange and to advance the project by working to include it in the state transportation Improvement Plan.

c) Please provide documentation (e.g. - invoices, proposals, estimates, etc.) adequate for the Commission to ensure that the funds will be used for the cost of mitigating the impact from the construction of a proposed gaming establishment.

BETA has advised the communities that this approach will involve the following steps:

1. Identity and assess improvements to the Route 1 corridor based on the assessment of existing operations developed by previous grant efforts. This will be done using the established Vissim model. (Future Full Build for Route 1 Improvement program)
2. For funding purposes, from the overall Route 1 Program, identify more manageable / fundable individual "standalone" project elements from the overall program between Revere and Saugus. Currently, the following is of primary importance
 - a. Pursue preliminary design for the intersection of Route 1 and Route 99 by evaluating the addition of new northbound lanes and a bridge over the Route 99 ramp to Route 1. The Route 99 ramp would enter Route 1 from the right travel lane instead of the high speed lanes as currently configured.
 - b. Further preliminary design for the addition of a travel lane in each direction for a consistent six-lane facility on Route 1 within the project limits.
3. Evaluate "standalone" projects using the Vissim model to assess benefits along with other considerations such as geometric conditions and right of way constraints. Up to 10 Vissim runs are anticipated to assess projects, individually and in various combinations.
4. Select preferred alternative for this project. Advance/revise existing Route 1 conceptual plans for this location to a higher level of completeness to depict proposed improvements.
5. Update budgetary construction costs for each project.
6. Prepare summary report describing the nature of the project along with estimated costs,

right of way impacts, regulatory/environmental issues and constraints and other such issues.

7. Prepare project funding applications MassDOT for both projects.

d) Please describe how the mitigation request will address the specific impact indicated.

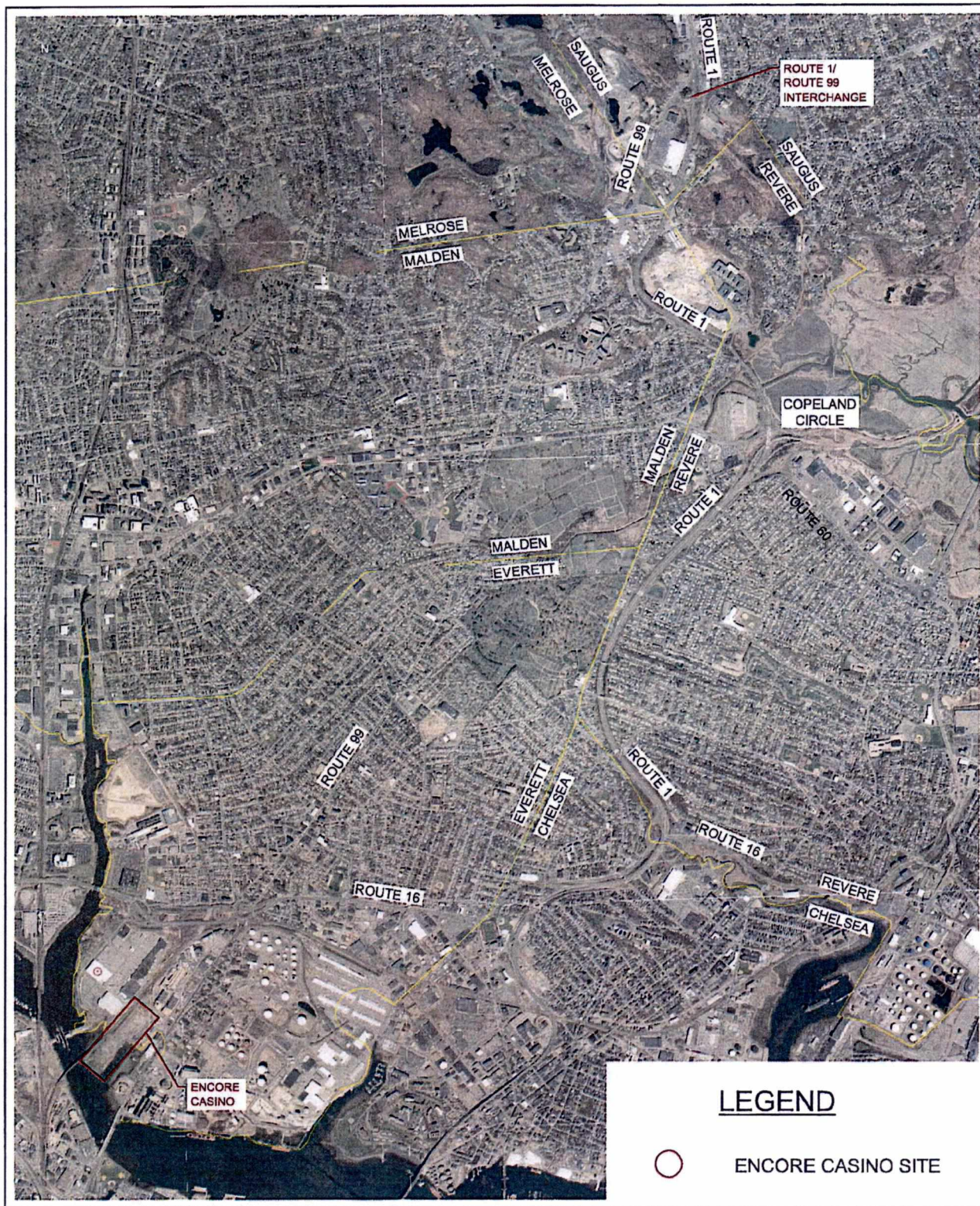
As described in 3) b and c above, a 2019 Joint Transportation Planning Grant will provide the two communities with the means to focus on achievable transportation improvement projects that are intended to mitigate anticipated traffic increases on the Route 1 – Route 99 corridor generated by the Encore Casino. The anticipated end result is a preliminary traffic improvement project that can reasonably be funded in the nearer term within the state Transportation Improvement Plan, and then constructed to better enable this key corridor to handle increased traffic projected for patrons of the Encore Casino.

4. CONNECTION TO GAMING FACILITY

Please provide specificity/evidence that the requested funds will be used to address issues or impacts directly related to the gaming facility.

The Town of Saugus and the City of Revere will use \$275,000 of the requested funds solely to address through the preliminary design phase, traffic issues and impacts directly related to anticipated traffic volume increases from the opening of the Encore Boston Harbor Casino in Everett in 2019. These will focus on the critical Route 1 – Route 99 interchange and corridor. The \$150,000 remainder of the joint request will be used to continue to fund the Revere-Saugus contracted Joint Transportation Planning firm engaged to advance needed casino related traffic improvements through the regional transportation planning and funding processes.

It is anticipated that improvements will need to be made incrementally given that previous efforts suggest that likely Route 1 improvements would cost in excess of \$175 million as estimated based on a concept developed over 6 years ago. The implications of current (and available right of way) will be a large factor. However, the need for the implementation of some improvement measures in the near term is heightened by the Encore Boston Harbor Casino; and therefore, an incremental approach will be followed.





Route 1 & Route 99 Interchange

Saugus, MA
Scale: 1" = 300'

5. IMPACT CONTROLS/ADMINISTRATION OF IMPACT FUNDS

Please provide detail regarding the controls that will be used to ensure that funds will only be used to plan to address the specific impact. If non-governmental entities will receive any funds, please describe what reporting will be required and how the applicant will remedy any misuse of funds.

The City of Revere will again act as Administrative agent for this additional joint transportation planning effort with the Town of Saugus. The sole purpose of this joint transportation planning effort is aimed at mitigation of specific local/regional traffic impacts that will come from the opening of the Wynn Casino in the second half of 2019. The City of Revere will adhere to all applicable state and local procurement policies and administrative/fiscal controls. No non-governmental entities will receive any of these funds directly or indirectly.

6. CONSULTATION WITH REGIONAL PLANNING AGENCY (RPA)/NEARBY COMMUNITIES

Please provide details about the Applicant's consultation with the Regional Planning Agency serving the community and nearby communities to determine the potential for cooperative regional efforts regarding planning activities.

The City of Revere and the Town of Saugus have been in communication with the Metropolitan Area Planning Council regarding the goals and approaches to this joint transportation planning effort.

Additionally, Saugus and Revere have frequently consulted with the Cities of Malden and Chelsea as to the prospect of greater collaboration with them, and perhaps more surrounding communities, to advance regional transportation planning efforts on a number of fronts, but most specifically on mitigation of casino related traffic impacts.

7. MATCHING FUNDS FROM GOVERNMENTAL OR OTHER ENTITY

Please demonstrate that the governmental or other entity will provide significant funding to match or partially match the assistance required from the Community Mitigation Fund. Please provide detail on what your community will contribute to the planning projects such as in-kind services or planning funds.

As with the case of the 2017/2018 Joint Transportation Planning Grants, both the City of Revere and Town of Saugus will provide significant in-kind services to support this initiative. This includes the provision of office space and supplies; administrative and fiscal support services. Of course the Mayor and Town Manager will make significant contributions in terms of public policy and guidance of the effort. Additionally, the effort will require substantive interrelationship with not only line planning personnel, but other municipal experts in the public safety, traffic, public works and engineering departments of both communities.

8. RELEVANT EXCERPTS FROM HOST OR SURROUNDING COMMUNITY AGREEMENTS AND MASSACHUSETTS ENVIRONMENTAL POLICY ACT (MEPA") DECISION

- a) Please describe and include excerpts regarding the transportation impact and potential mitigation from any relevant sections of any Host or Surrounding Community Agreement.

As neither Revere nor Saugus has been recognized as a Surrounding Community to the Encore Casino, the grant is sought in order to provide the means for these communities to continue jointly and cooperatively, to pursue measures to mitigate anticipated casino traffic impacts. In the process, some negative conditions that pre-date the casino may be alleviated

- b) Please provide a demonstration that such mitigation measure is not already required to be completed by the licensee pursuant to any regulatory requirements or pursuant to any agreements between such licensee and applicant.

N/A

- c) Please also briefly summarize and/or provide page references to the most relevant language included in the most relevant MEPA certificate(s) or comment(s) submitted by the community to

MEPA.
N/A

d) Please explain how this transportation impact was either anticipated or not anticipated in that Agreement or such MEPA decision.
N/A

e) If transportation planning funds are sought for mitigation not required under MEPA, please provide justification why funding should be utilized to plan for such mitigation. For example, a community could provide information on the significance of potential impacts if trip generation totals exceed projected estimates.
<p>The Encore Boston Harbor Casino project will include 2,914 parking spaces on-site and 800 parking spaces off-site for employees. The project is projected to generate the following daily and peak hour vehicle trips:</p> <ul style="list-style-type: none"> • Friday Daily = 36,846 • Friday Daily Net New: 20, 130 • Friday PM Peak Hour Net New: 1,358 • Saturday Daily = 43,930 • Saturday Daily Net New = 23,982 • Saturday Peak Hour Net New: 1,810 <p>The Route 1/Route 99 interchange is located to the northeast in Saugus, less than 5 miles from the casino site. The weekday average daily traffic near the interchange is over 120,000 vehicles on Route 1 and almost 27,000 vehicles on Route 99. The interchange is noted regionally as experiencing mobility and safety issues (Long Range Transportation Plan of Boston MPO, July 2015). The casino is expected to increase traffic through the Route 1/Route 99 interchange. If the Transportation Demand Management (TDM) program proposed as part of the proposed project underperforms and does not meet estimates, the traffic impact to this critical interchange may increase significantly.</p>

No Community is eligible for more than one
Transportation Regional Planning Incentive Award.

CERTIFICATION BY MUNICIPALITY/GOVERNMENTAL ENTITY

On behalf of the aforementioned municipality/governmental entity I hereby certify that the funds that are requested in this application will be used solely for the purposes articulated in this Application.

Brian Arrigo, Mayor of Revere

Signature(s) of Responsible Municipal
Official(s)/Governmental Entity(ies)



Date

1.28.19

CERTIFICATION BY MUNICIPALITY/GOVERNMENTAL ENTITY

On behalf of the aforementioned municipality/governmental entity I hereby certify that the funds that are requested in this application will be used solely for the purposes articulated in this Application.

Scott Crabtree, Saugus Town Manager

Signature(s) of Responsible Municipal
Official(s)/Governmental Entity(ies)



Date

1-30-19