

Assessing the Impact of Gambling on Public Safety in Massachusetts

ANALYSIS OF PLAINRIDGE PARK'S
FIRST TWO YEARS

Christopher W. Bruce

Crime analysis consultant



Summary

Plainridge Park opened at the end of June 2015.

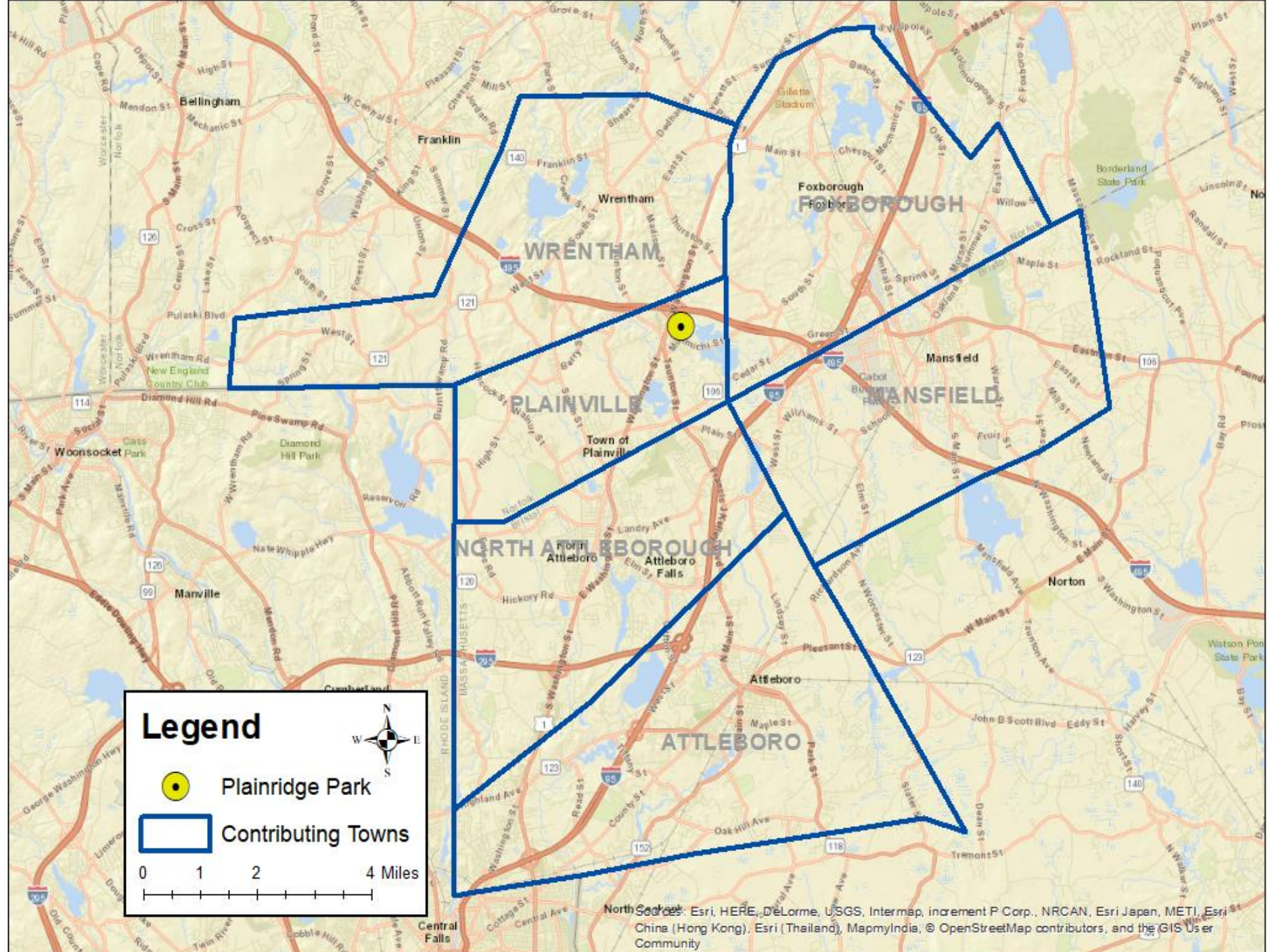
Since that time, it has reported a number of crimes and calls for service commensurate with facilities of similar size and number of visitors.

As for the surrounding community (including six towns), the totality of the evidence shows little impact on most crimes and calls for service.

The types of calls for service to increase are those highly correlated with the number of cars and visitors to a community, such as traffic issues and reports of lost property and suspicious activity.

One potential crime increase concerns the use of stolen credit cards in the area, but this did not persist past the first year.

The analysis is complicated by changes in reporting practices at several of the participating agencies.



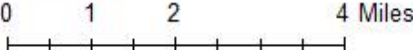
Legend



Plainridge Park



Contributing Towns



Sources: Esri, HERE, DeLorme, USGS, Intermap, increment P Corp., NRCAN, Esri Japan, METI, Esri China (Hong Kong), Esri (Thailand), MapmyIndia, © OpenStreetMap contributors, and the GIS User Community

Methodology

Data collected from records systems of Plainville, Attleboro, Foxborough, Mansfield, North Attleborough, Wrentham

Merged and translated into common database.

Period of July 2015 - June 2017 compared against past periods since 2010. Unusual changes noted.

Any category significantly higher than normal fully analyzed with collected data, plus narratives from samples of reports. Summaries provided in full report.

Reviewed by Research Advisory Committee

Agencies given chance to comment by e-mail and at February meeting.

Signs of a casino relationship

Sign	Hypothetical example	Hypothetical opposite
Type of crime logically tied to activity at casino	Increase in robberies in surrounding area	Increase of thefts of property at schools
More offenders and victims from outside the local area	Increase in domestic dispute and violence calls at area hotels	Increase in domestic dispute and violence calls at homes
Same category increasing in multiple agencies	3 of 5 communities see increase in thefts from cars	1 community reports increase in burglary while 4 report decreases
Complementary increases in related offenses	Theft, robbery, and fraud all increase in area	Only identity theft increases in area
Casino specifically mentioned by offenders/victims	Drunk drivers mention they were last drinking at casino	Serial burglar admits to stealing for heroin
Increase is spatially related to location of casino	Traffic collisions increase on Route 1 in Plainville	Traffic collisions increase on residential roads in Attleboro
Increase only happened in Plainville area, not in control communities or statewide	Thefts from vehicles went up 20% in Plainville area but went down 5% everywhere else	Identity theft increased 20% in Plainville area but also increased 20% statewide

Comparison communities

Area	Communities	Population (2010)	Square Miles	2014 IBR Total
Study	Plainville, Attleboro, Foxborough, Mansfield, North Attleborough, Wrentham	131,401	122.9	3,924
Comp 1	Berlin, Hudson, Marlborough, Northborough, Shrewsbury, Southborough, Westborough	139,230	124.9	3,519
Comp 2	Canton, Dedham, Norwood, Randolph, Westwood	121,622	62.4	3,953
Comp 3	Bedford, Concord, Lexington, Lincoln, Waltham, Weston	140,638	102.2	2,910

Notes from previous research

Previous research has generally depended on summary statistics and only for Part 1 crimes as reported to the FBI.

Previous studies are mixed when it comes to the impact of casinos on crime in the surrounding communities.

Changes in crime may fluctuate across temporal “bands” after the casino’s introduction.

Studies that show an increase do not establish a causal relationship between gambling *specifically* and crime.

“Crime does not inevitably increase with the introduction of a casino...The effects of casinos on crime appear to be related to a variety of variables which are only poorly understood.” (Stitt, Nichols, & Giacomassi, 2003, p. 253)

Major findings

Violent crime up in area, property and total crimes down

Incidents at the casino itself led to a 10% increase in property crime and a 12% increase in total crime in Plainville

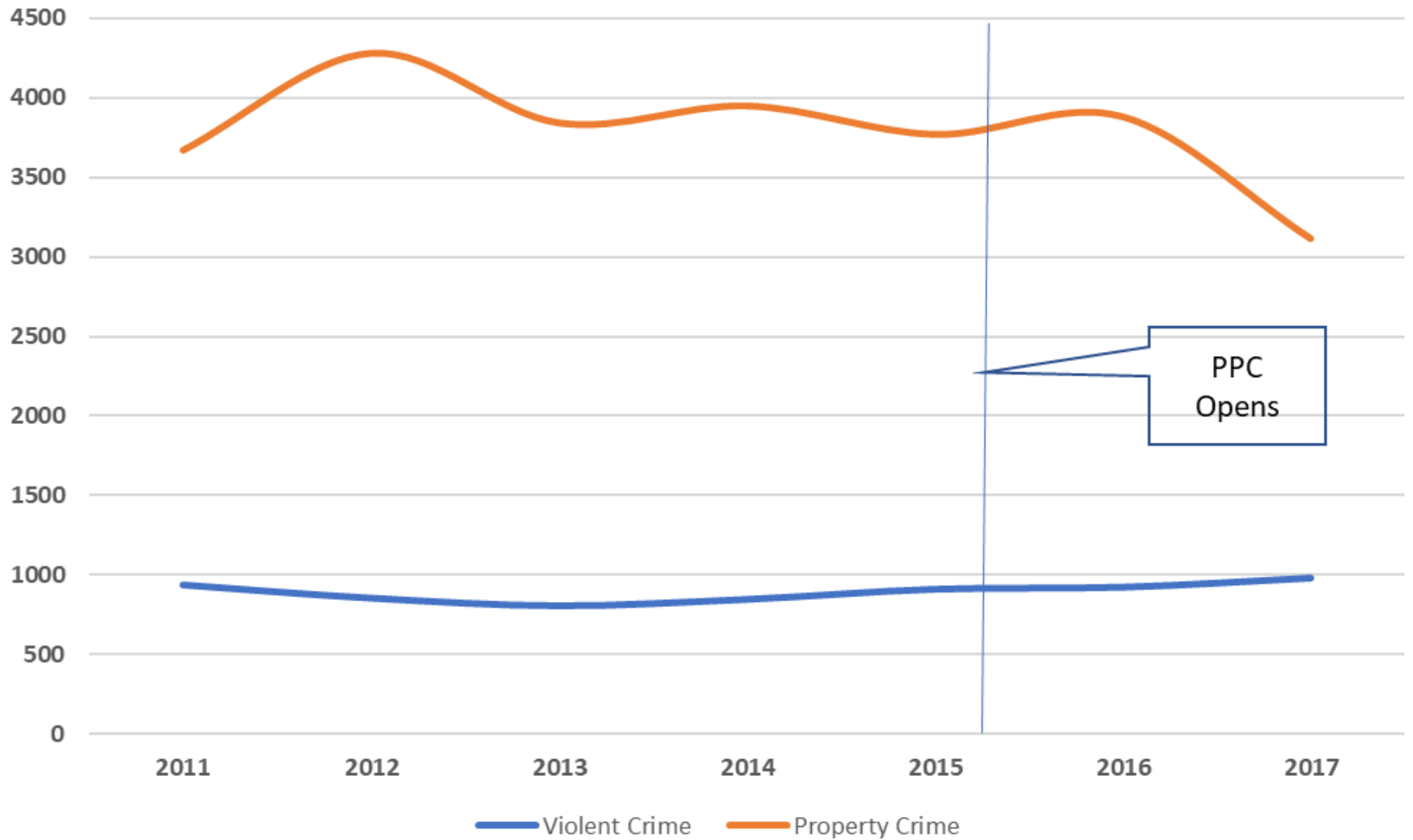
Total arrests/charges down significantly, particularly for liquor offenses

In the surrounding area, increases “likely” related to PPC:

- Credit card fraud throughout region during first year
- Traffic collisions on feeder routes in several communities
- “Lost property” calls in Plainville
- “Suspicious activity” calls in Plainville
- Traffic/parking complaints in Plainville
- General increase at hotels, convenience stores, gas stations

Crime Trends in the 6 PPC-Area Communities

Years starting 1 July and ending 30 June



Selected crimes and calls

Type	Pre-PPC Avg.	St. Dev.	Post-PPC Avg.	Z-Score
Robbery	33.0	8.22	23.0	-1.22
Simple Assault	607.4	47.01	676.0	+1.46
Burglary	516.0	88.05	345.5	-1.94
Thefts from Vehicles	311.4	96.57	234.5	-0.80
Auto Theft	109.4	10.37	80.0	-2.84
Credit Card Fraud	104.0	14.87	1430	+2.62
Drug Offenses	226.0	14.68	207.0	-1.29
Liquor Law Violations	418.0	144.56	112.5	-2.11
Drunk Driving	269.6	29.29	286.5	+0.58
Traffic Collisions	4583.2	182.50	4975.0	+2.15

Compared to controls (18 mo.)

Crime	PPC Area	Control
Sex Assault	+1%	-5%
Robbery	-20%	-30%
★ Kidnapping	+22%	-53%
Agg. Assault	-8%	-3%
★ Simple Assault	+18%	-11%
Burglary	-28%	-34%
Auto Theft	-26%	-6%
Theft from Veh.	-21%	-18%
Vandalism	-13%	-24%

Crime	PPC Area	Control
Forgery	+4%	+4%
Credit Card Frd.	+51%	+2%
Con Games	+22%	+25%
ID Theft	+79%	+79%



Trends at PPC

Trend	At least	Notes
Theft of gaming credits/TITO	80	High solvability rate
Drug use/distribution outside	40	Cocaine, heroin, marijuana
Drunk/angry/obnoxious patrons	32	
Theft of personal property	20	Again, high solvability rate
Fake ID	12	More banned than underage
Patrons damaging machines	10	Often by pouring drinks
Domestic disputes/assaults	10	Male assailants, alcohol
Children left alone in cars	6	
Money laundering	4	

Effects on Plainville's Statistics

0% increase in violent crime

10% increase in property crime

12% increase in total crime

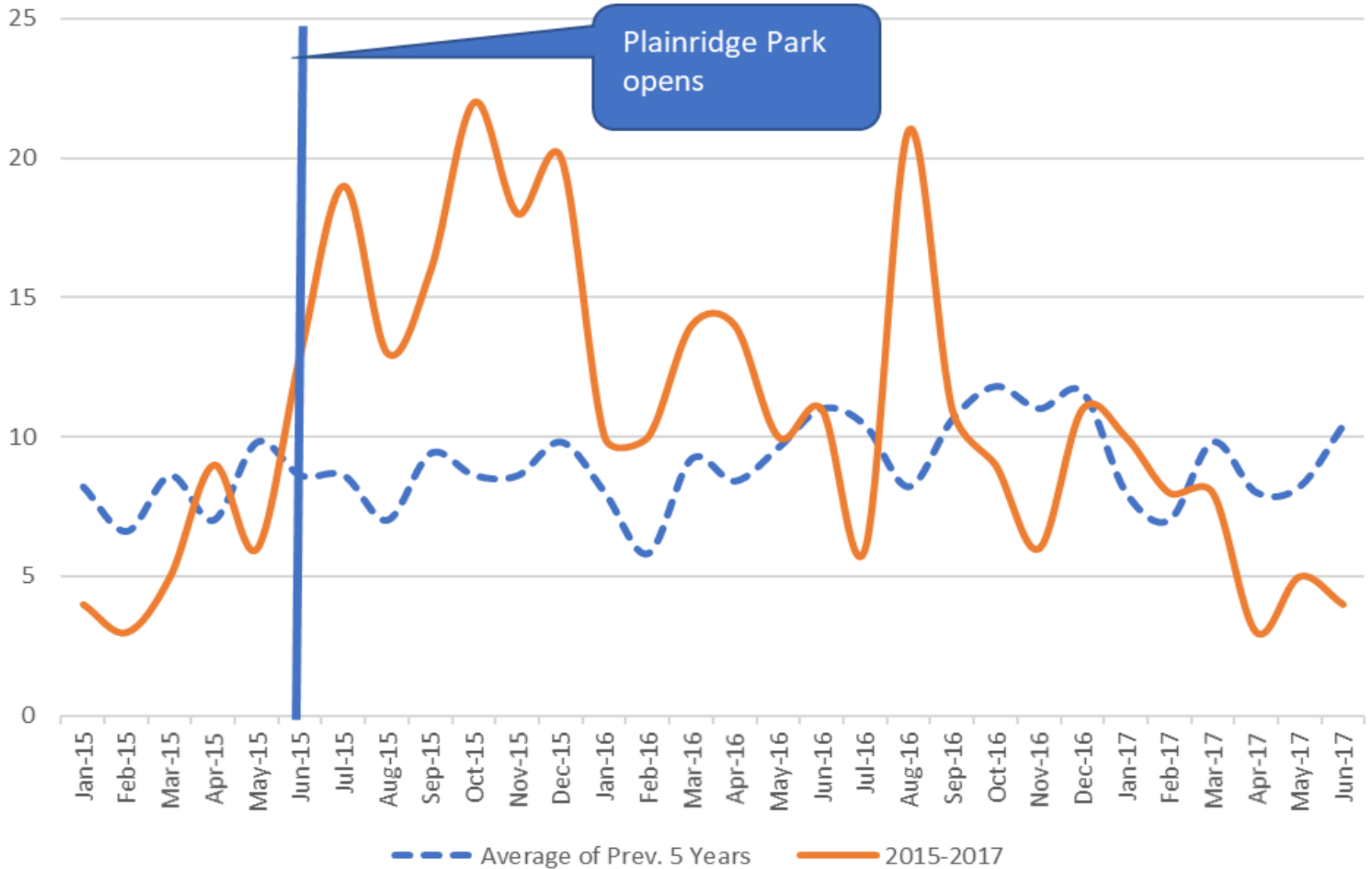
3% increase in calls for service

Balanced by 36%
increase in sworn
officers at Plainville
PD (14 to 19)

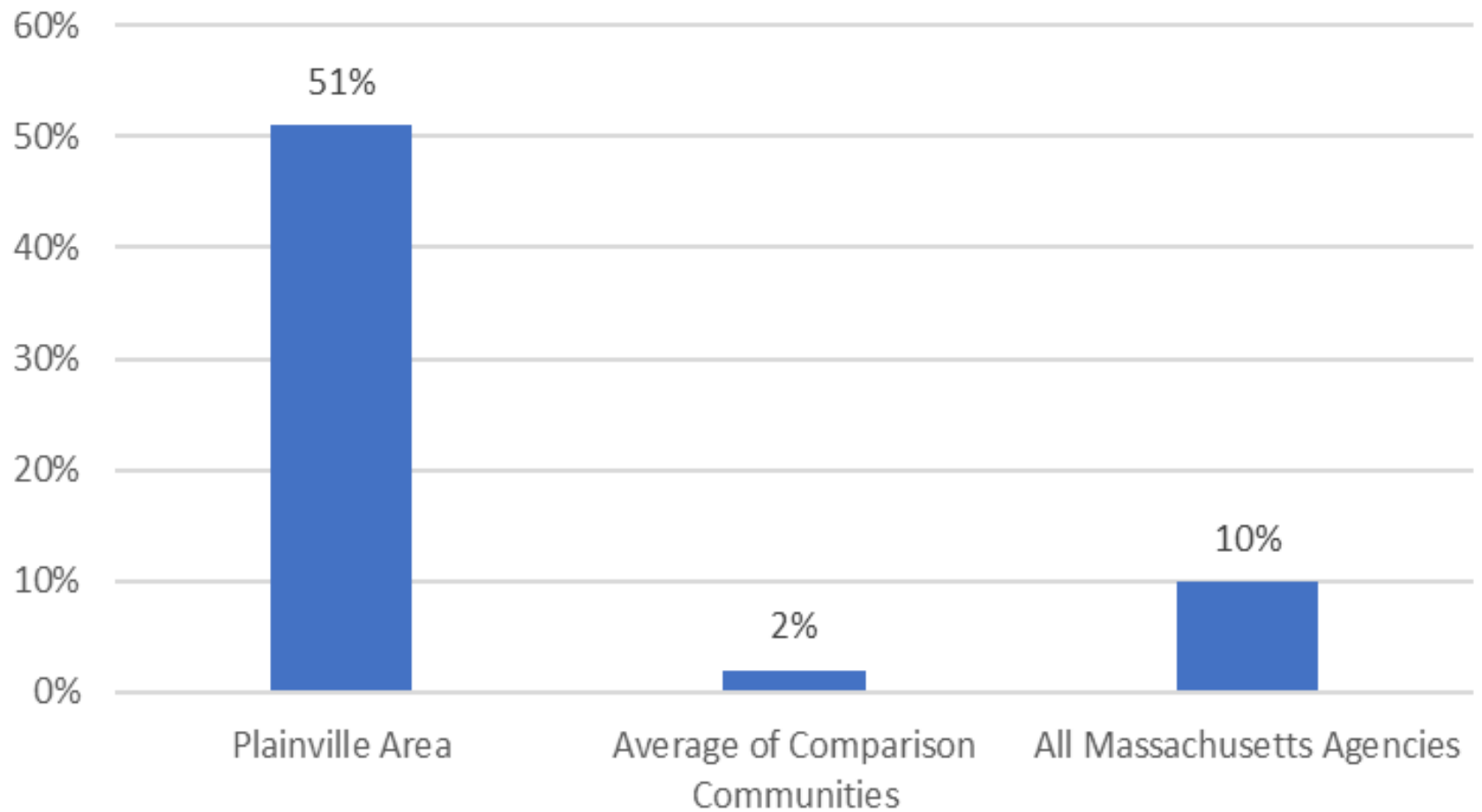
Percentage of activity at top locations, June 2015–July 2017

Community	Top Offense Location	% Violent Crimes	% Property Crimes	% Total Crimes	% Calls for Service
Plainville	Plainridge Park	0%	11%	13%	9%
Plainville #2	Plainville Commons	0%	12%	10%	2%
Attleboro	Bristol Place	1%	9%	8%	3%
Mansfield	Xfinity Center*	24%	4%	58%	<1%
N. Attleborough	Emerald Square	6%	23%	17%	11%
Wrentham	Wrentham Vlg. outlets	12%	62%	59%	24%

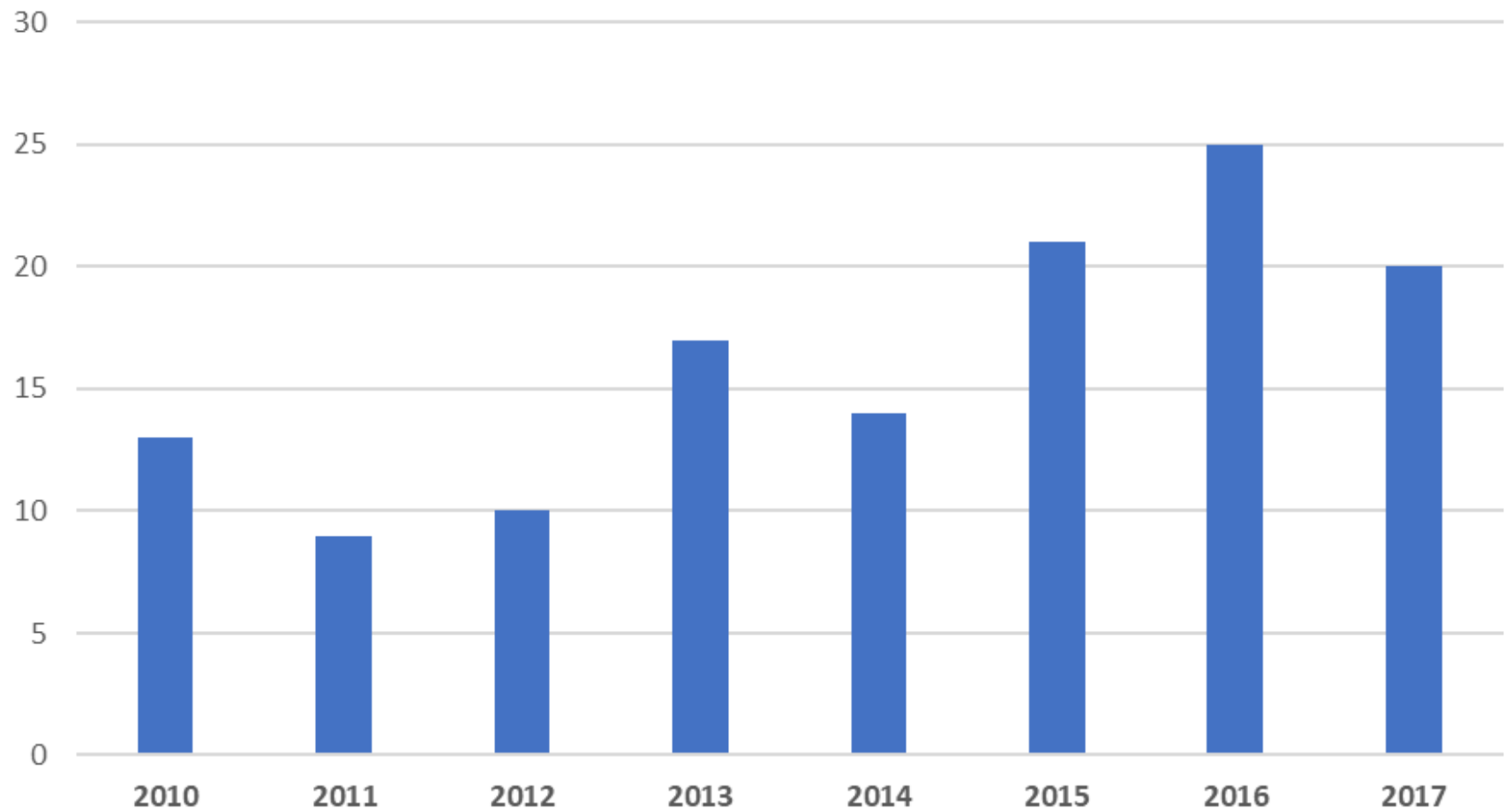
Credit Card Fraud in the 6 Communities



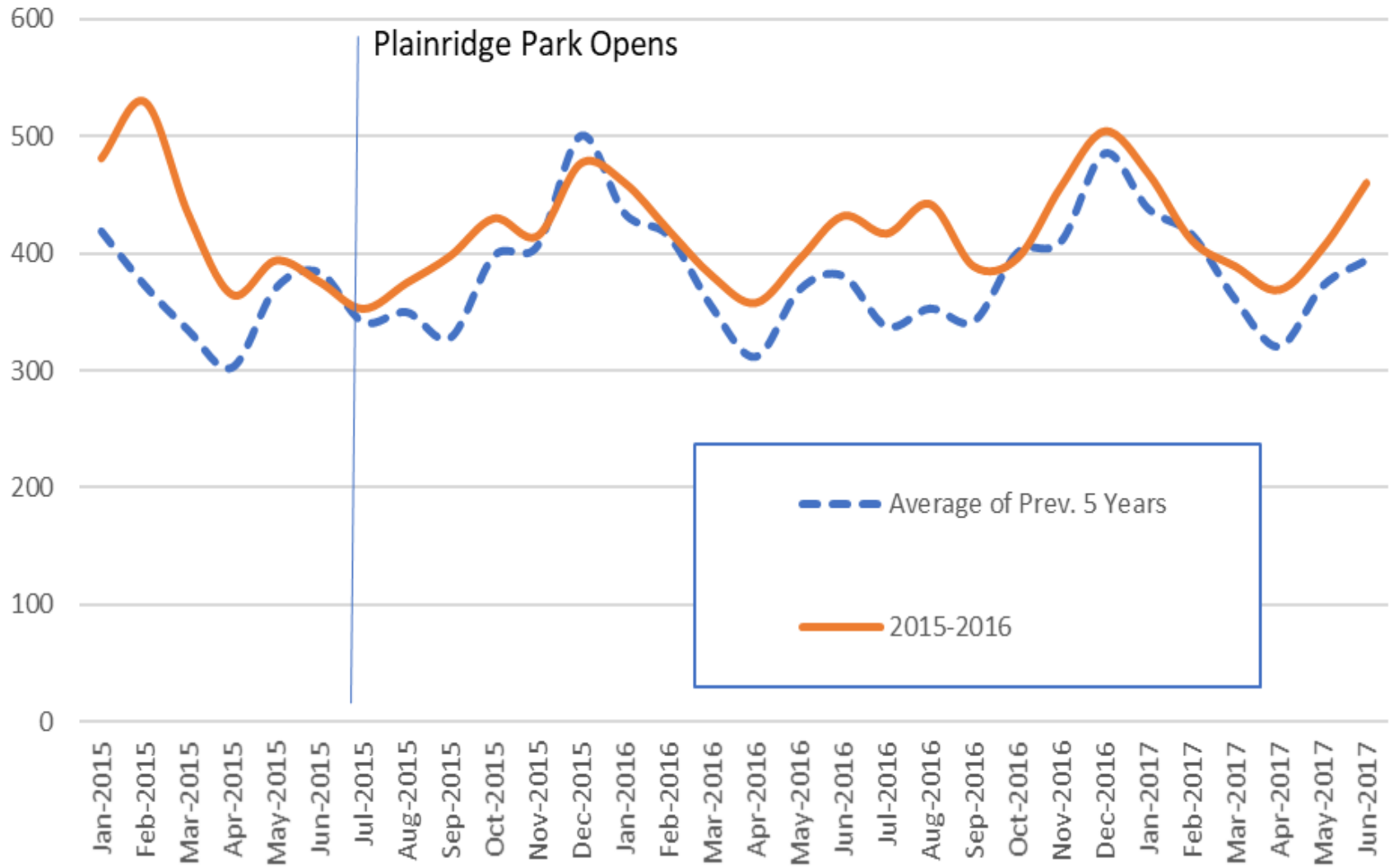
Changes in Credit Card Fraud 1 July 2015-31 December 2016



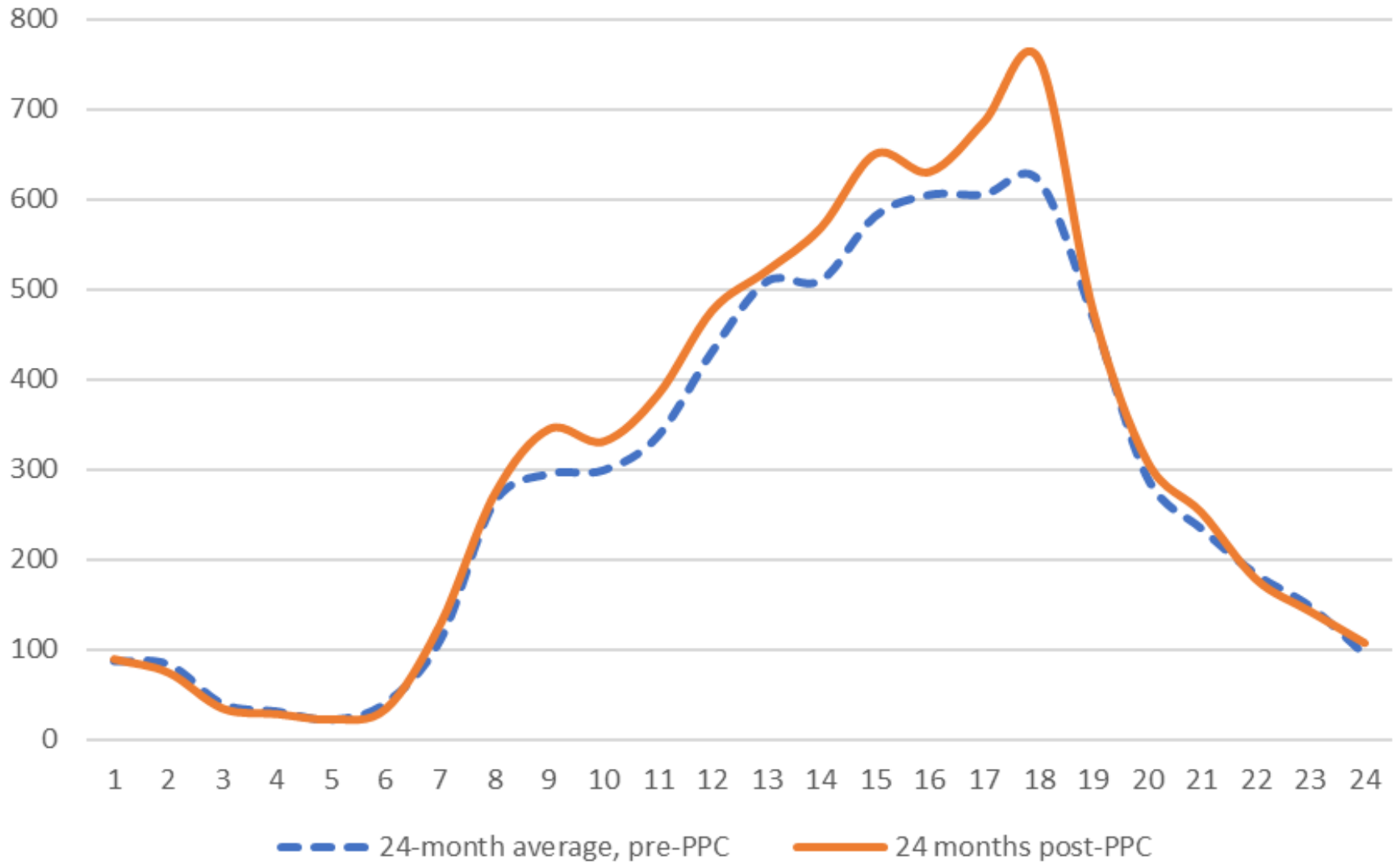
Percentage of Illegal Credit Card Use in 6 Communities for Food, Liquor, or Cigarettes, Years Ending 30 June



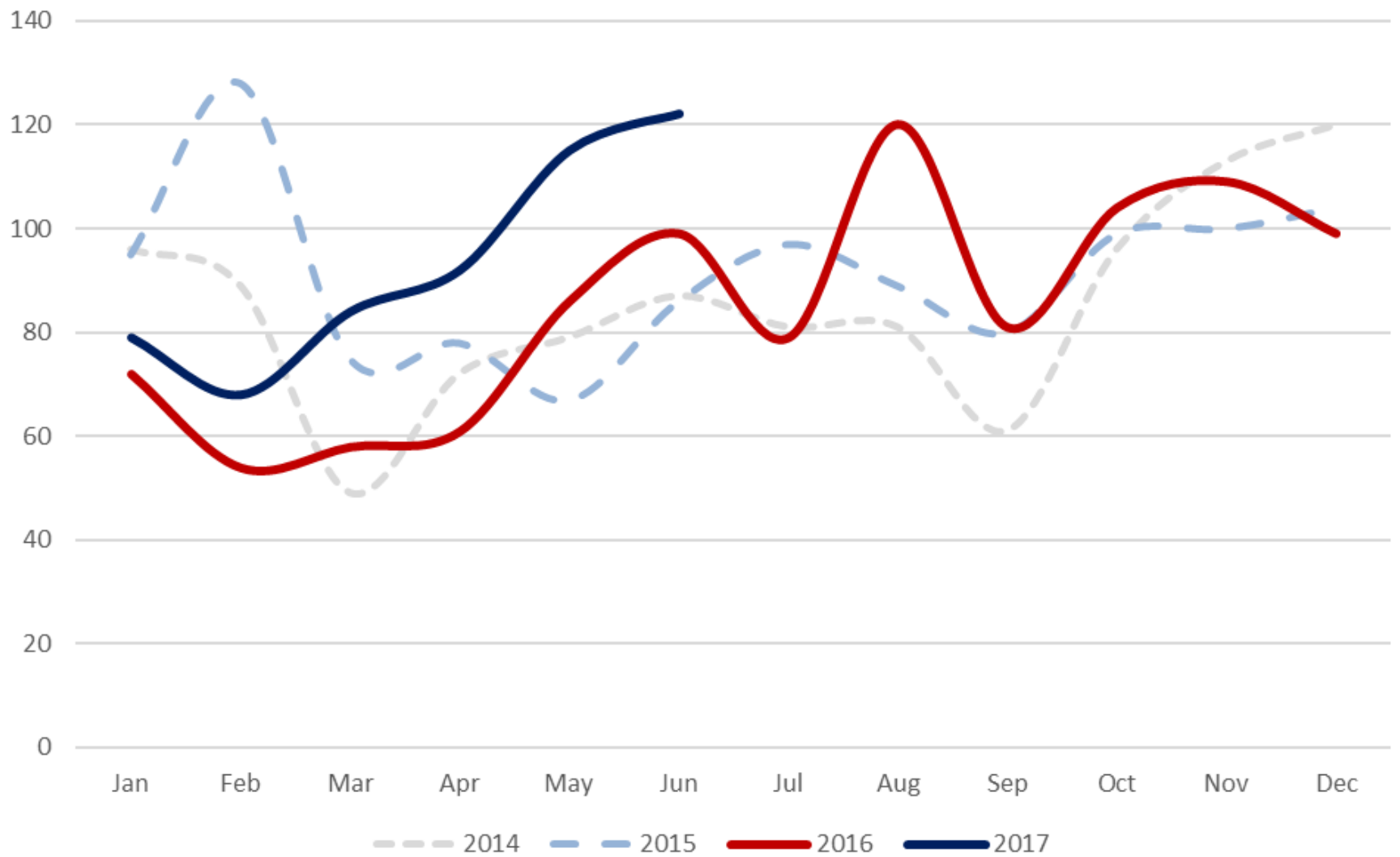
Motor Vehicle Collisions in the 6 Communities



Traffic Collisions in 6 Communities by Hour of Day



Collisions reported to Massachusetts State Police in the 6 communities



Troubling trends (non-PPC)

Increases in fraud

- Telephone scams in particular (IRS, credit bureau, family in trouble)
- Overpayment in online purchases
- A lot of mis-coding in this category (~20%)

Increases in identity theft

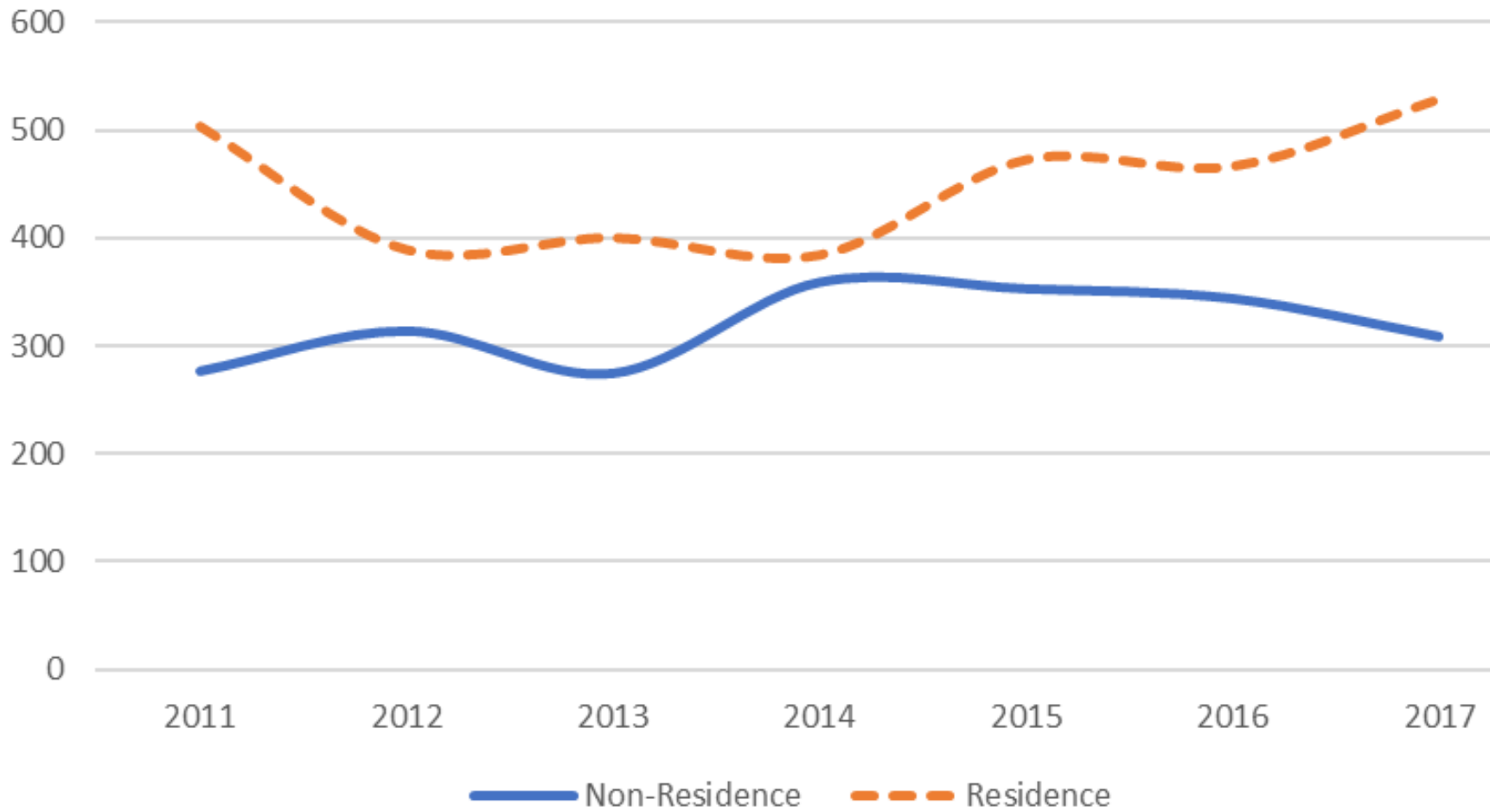
- High in 2015, got better (but still high) in 2016 and 2017
- Mirrors state increase

Increases in domestic simple assault and “family offenses”

Wrentham: Premium Outlets

Simple and Aggravated Assault by Location Type

Years ending 30 June



Upcoming reports and events

April 2018:	PPC 30-month report
May 2018:	Access/IMC training (May 10-11, Chicopee)
June 2018:	PPC traffic study
June 2018:	MGM baseline
Summer 2018:	[Wynn] kick-off meeting
December 2018:	PPC 3-year report
March 2019:	MGM 90-day report

Thank You!

Christopher W. Bruce

Crime analyst consultant to the
Massachusetts Gaming Commission

978-853-3502

cwbruce@gmail.com