

Assessing the Impact of Gambling on Public Safety in Massachusetts

Analysis of Plainridge Park's first year

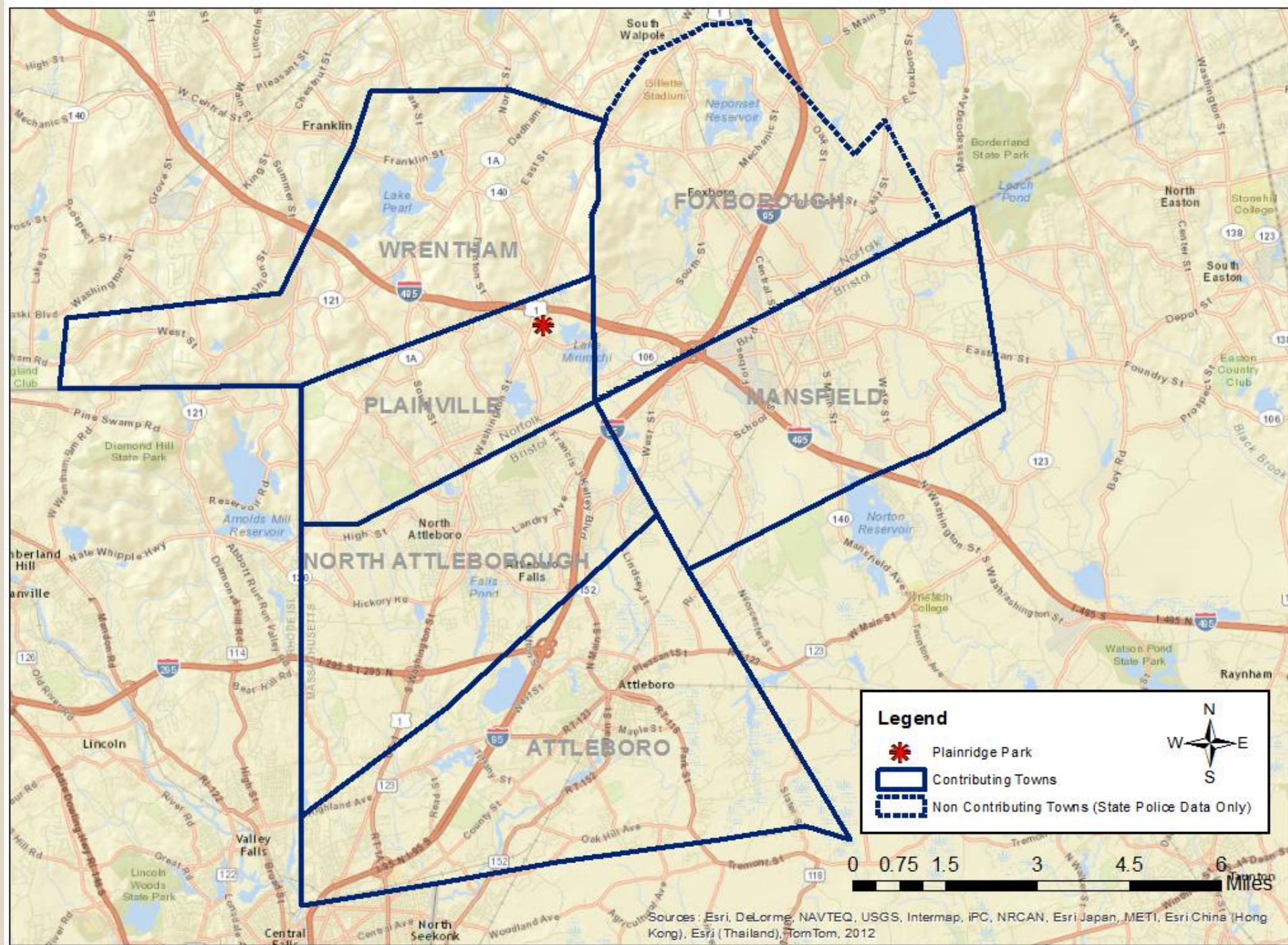
Christopher W. Bruce

Trainer and consultant in crime analysis
and data-driven policing



Elevator summary

Since its opening in June 2015, Plainridge Park has shown crime and call-for-service totals commensurate with similarly-sized and trafficked facilities. As for the surrounding community, the totality of the evidence shows **little impact** on most crimes and calls for service. The casino may have influenced an increase in **credit card fraud, identity theft, and “con games”** in the region, although more analysis is needed. The presence of the casino also does seem related to increases in the types of calls for service that one would expect to increase with **extra traffic and people in the area**, including traffic collisions, lost property, and citizen complaints of traffic problems. The analysis is complicated by changes in reporting practices at several of the participating agencies.



Methodology

- Data collected from records systems of Plainville, Attleboro, Mansfield, North Attleborough, Wrentham, and State Police RAMS system.
- Merged and translated into common database.
- Period of July 2015-June 2016 compared against past June periods since 2010. Unusual changes noted.
- Any category significantly higher than normal fully analyzed with collected data; plus:
- Memo sent back to each agency with list of increased crimes for review of individual crime reports, in an attempt to identify patterns and/or determine casino relationship.

incnum	agency	dtreceived	IncidentType	OrigIncidentType	Street
15-15178	Mansfield	07/12/2015 18:38:00	Crime Enforcement		SCHOOL ST
2015000005935	Wrentham	07/12/2015 18:37:43	Traffic Collision		Washington Street
2015000018989	North Attleboro	07/12/2015 18:32:58	Domestic Dispute	Domestic	SOUTH WASHINGTON S
15072062	Attleboro	07/12/2015 18:31:54	Building Check	SEC CHK	OAKHILL AVE
2015000005934	Wrentham	07/12/2015 18:30:42	Disorderly		Premium Outlet Boulev
2015-0H3-003706	MSP	07/12/2015 18:30:00	Fire	Fire	RT 495 North, South of E
2015000003935	Plainville	07/12/2015 18:27:02	Lost Property	Lost and Found	Bacon Square
2015000005933	Wrentham	07/12/2015 18:26:57	Medical		Washington Street
2015000018988	North Attleboro	07/12/2015 18:26:12	Building Check	Building Check	HOMEWARD LN
15-15177	Mansfield	07/12/2015 18:26:00	Crime Enforcement		SOUTH MAIN ST
2015000005932	Wrentham	07/12/2015 18:25:54	General Service		Premium Outlet Boulev
2015000018987	North Attleboro	07/12/2015 18:25:29	Investigation	Investigation	SOUTH WASHINGTON S
15-15176	Mansfield	07/12/2015 18:17:00	Traffic Enforcement		MAPLE ST
2015-0H3-003705	MSP	07/12/2015 18:16:00	Road Conditions	Debris in Road	RT 295 South, South of E
15072061	Attleboro	07/12/2015 18:14:43	Suspicious Activity	SUSP PERS	PLEASANT ST
2015000018986	North Attleboro	07/12/2015 18:11:41	Traffic Collision	Accident NO/PI	CUMBERLAND AV

Signs of a casino relationship

Sign	Hypothetical example	Hypothetical opposite
Type of crime logically tied to activity at casino	Increase in robberies in surrounding area	Increase of thefts of property at schools
More offenders and victims from outside the local area	Increase in domestic dispute and violence calls at area hotels	Increase in domestic dispute and violence calls at area homes
Same category increasing in multiple agencies	3 of 5 communities see increase in thefts from cars	1 community reports increase in burglary while 4 report decreases
Complementary increases in related offenses	Theft, robbery, and fraud all increase in area	Only identity theft increases in area
Casino specifically mentioned by offenders/victims	Drunk drivers mention they were last drinking at casino	Serial burglar admits to stealing for heroin
Increase is spatially related to location of casino	Traffic collisions increase on Route 1 in Plainville, N. Attleborough	Traffic collisions increase on residential streets in Attleboro

Limitations

- Full statewide dataset for crime, including data for control areas, not yet available for study period. (Preliminary results for a 6-month period offered.)
- Full statewide dataset for traffic collisions not yet available.
- No current comparative data on calls for service.
- Future reports will be better able to demonstrate relationship between casino and crime *quantitatively*.

Notes from previous research

- Previous research has generally depended on summary statistics and only for Part 1 crimes as reported to the FBI.
- Previous studies are mixed when it comes to the impact of casinos on crime in the surrounding communities.
- Changes in crime may fluctuate across temporal “bands” after the casino’s introduction.
- Studies that show an increase do not establish a causal relationship between gambling *specifically* and crime.
- “Crime does not inevitably increase with the introduction of a casino...The effects of casinos on crime appear to be related to a variety of variables which are only poorly understood.” (Stitt, Nichols, & Giacomassi, 2003, p. 253)

Findings: Plainridge Park

Category	GEU Statistics
Burglary	5
Theft/fraud/forgery/checks	146
Identity theft	4
Forgery/counterfeiting	19
Drug offenses/investigations	77
Drunkenness/liquor/disorderly	134
Suspicious persons	224
Medical aids	113

- Thefts of gaming credits
- Thefts of personal property
- Drug use/distribution in parking areas
- Intoxicated/obnoxious on casino floor
- Intoxicated persons in parking areas
- Small children left alone in cars
- **Detection rate near 100%**

Effects on Plainville's Statistics

- 0% increase in violent crime
- 10% increase in property crime
- 14% increase in total crime
- 3% increase in calls for service

Balanced by 36% increase in sworn officers at Plainville PD (14 to 19)

Percentage of activity at top locations, June 2015–July 2016

Community	Top Offense Location	% Violent Crimes	% Property Crimes	% Total Crimes	% Calls for Service
Plainville	Plainridge Park	0%	11%	16%	10%
Plainville #2	Plainville Commons	0%	13%	10%	2%
Attleboro	Bristol Place	1%	10%	7%	3%
Mansfield	Xfinity Center*	24%	5%	64%	<1%
N. Attleborough	Emerald Square	6%	22%	16%	9%
Wrentham	Wrentham Vlg. outlets	12%	59%	55%	22%

Notes on findings from area

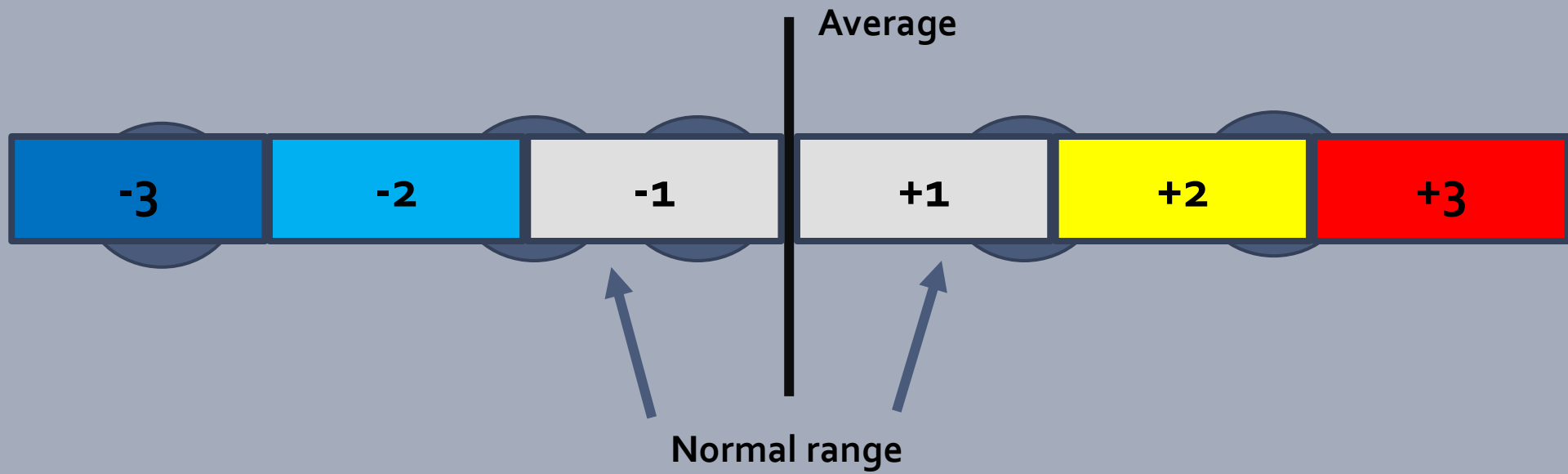
- As with all agencies in all time periods, area agencies reported some significant increases and decreases in various crimes and calls for service.
- There were many increases that clearly had nothing to do with Plainridge Park; examples:
 - Increase in kidnapping statistics in region (domestic)
 - “Increase” in prostitution—2 incidents at hotel in Wrentham
 - Serial burglars responsible for increase in North Attleborough
- Statistics complicated by:
 - Increase in heroin/opioid use within the region
 - Lower gas prices likely increasing miles driven
 - Improvements in data quality and reporting by 2 agencies
 - Fair weather in first half of 2016

Findings from area

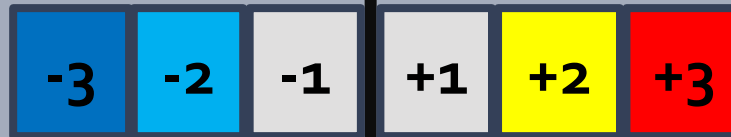
- **Likely related to presence of casino (more coming up)**
 - Increase in credit card fraud
 - Increases in traffic-related calls for service, primarily in Plainville, somewhat in North Attleborough. Improper or erratic driving, parking, disabled vehicles, suspicious vehicles.
 - Minor increase in traffic collisions on Route 1
- **Possibly related**
 - Increases in regular fraud/con games
 - Increase in drunk driving in 3 communities

Findings from area (cont.)

- **Likely not related** (sample)
 - Increase in simple assault (improved coding)
 - Increases in “family offenses”
 - “Increase” in prostitution (2 at Wrentham hotel)
 - Serial burglaries in North Attleborough (local heroin addicts)
 - Many drug/alcohol crimes in North Attleborough (improved coding)
 - Increase in vandalism in Plainville
- **Did not happen at all**
 - No increase in robbery
 - No increase in burglary area-wide
 - No increases in thefts from buildings, persons, or vehicles
 - Significant decrease in auto thefts
 - Significant increase in reported drug offenses and liquor law violations



Average



Average



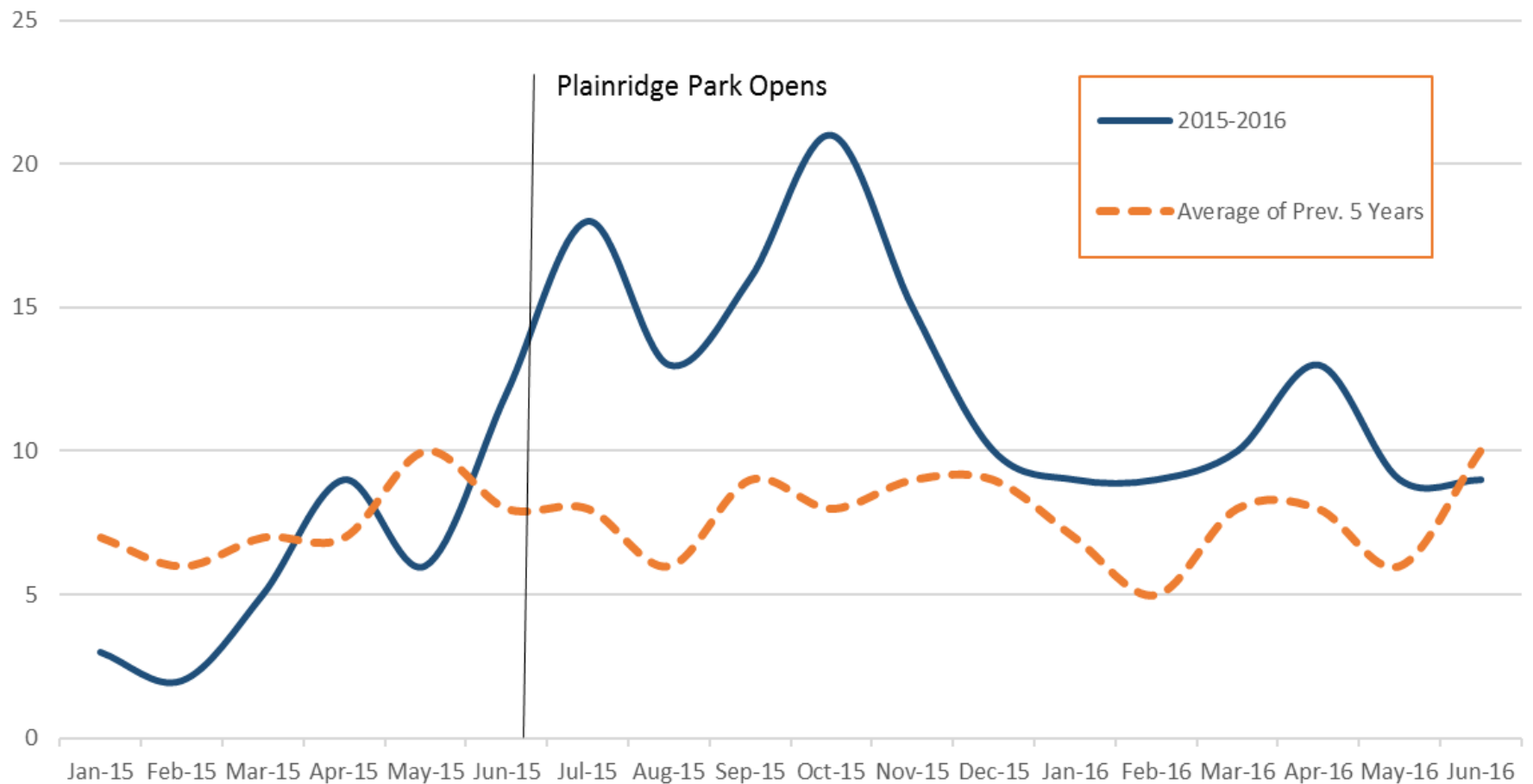
Comparison to baseline: Selected Crimes

Plainville, Attleboro, Mansfield, North Attleboro, and Wrentham

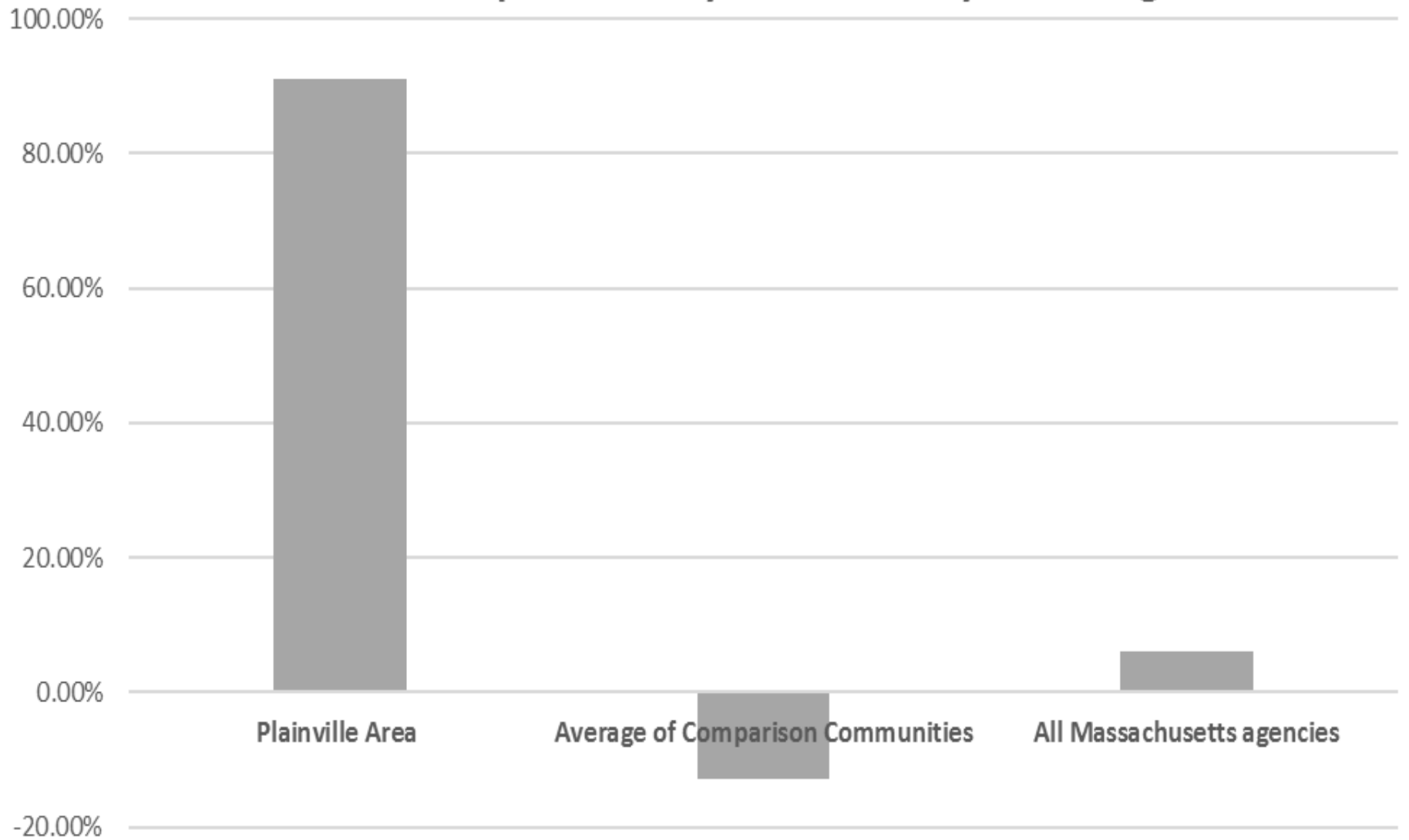
Crime	July-Jun Avg.	St. Dev.	2016	Z
Sexual Assault	48.2	6.34	57	+1.39
Robbery	30.4	7.81	20	-1.33
Aggravated Assault	141.8	14.34	122	-1.38
Simple Assault	507.0	38.59	595	+2.28
Burglary	448.8	79.61	363	-1.08
Theft from buildings	209.2	28.66	171	-1.33
Thefts from vehicles	308.8	96.34	219	-0.93
Auto theft	101.4	10.40	73	-2.73
Credit card fraud	96.4	12.48	151	+4.37
Forgery	78.4	8.82	84	+0.63
Vandalism	490.0	53.80	455	-0.65
Total Violent Crime	734.4	42.44	805	+1.64
Total Property Crime	3535.2	183.92	3378	-0.85

Credit card fraud

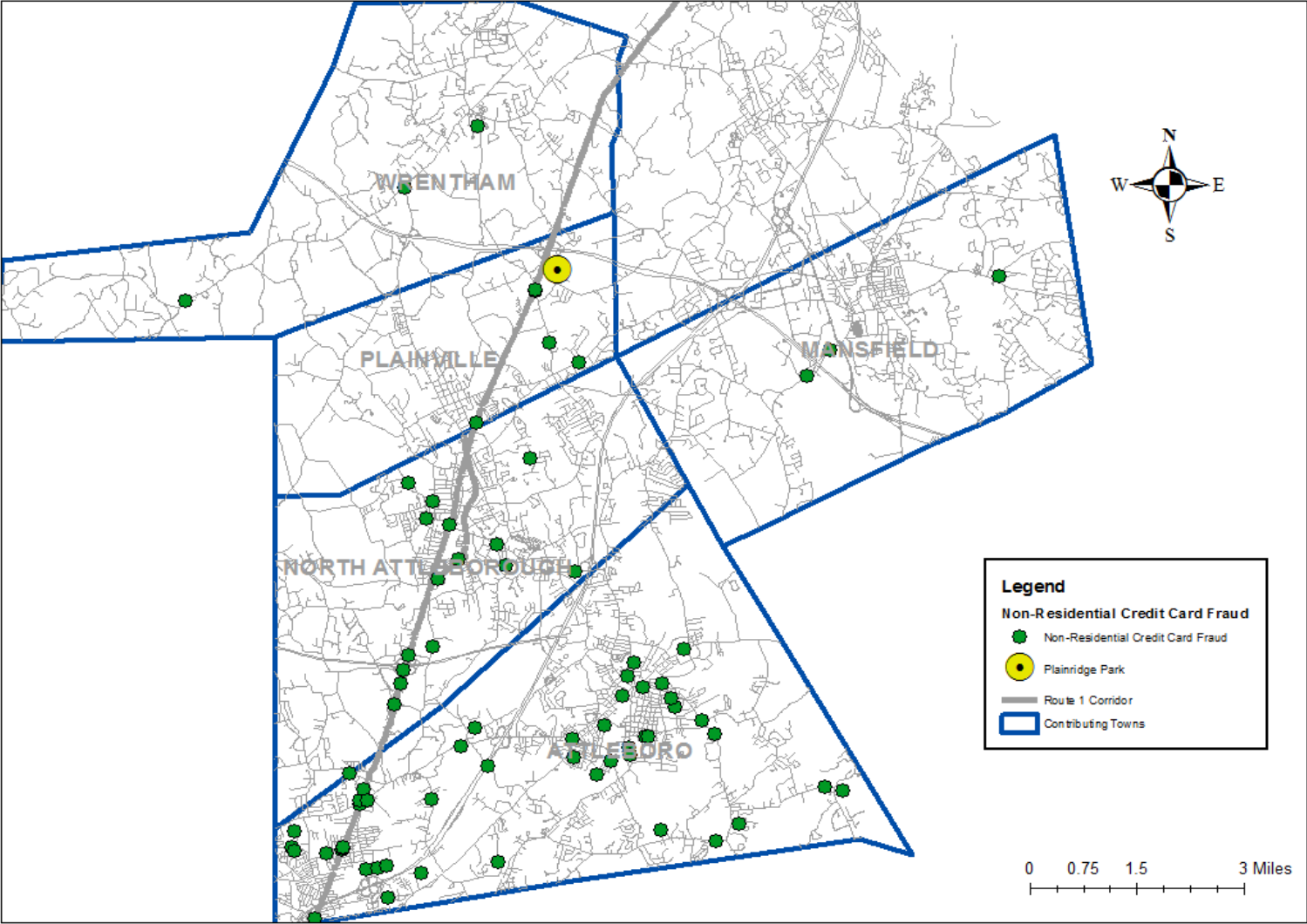
Credit Card Fraud in Plainville, Attleboro, Mansfield, North Attleborough, and Wrentham



Changes in reported credit card fraud, July 2015 - December 2015 compared to July-December 5-year average



Credit cards not stolen at PPC



Analysis of credit card fraud shows

- 42% involve credit cards lost or stolen elsewhere and used to purchase merchandise at stores in Plainville area.
 - **Liquor, food, cigarettes, and gift cards**
 - No single hot spot
 - Possible PPC relationship in this category
- 31% involve Plainville-area residents' cards used online or out of state.
- 12% involve Plainville-area residents' ATM cards used to make withdrawals, often out of state

Fraud/con games

- Telephone scams: impersonating IRS, family member, credit card employee
- Online retail/Moneygram scams
- Also increasing statewide at about the same pace
- Probably no PPC relationship

Comparison to baseline: Selected Calls

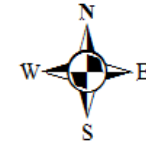
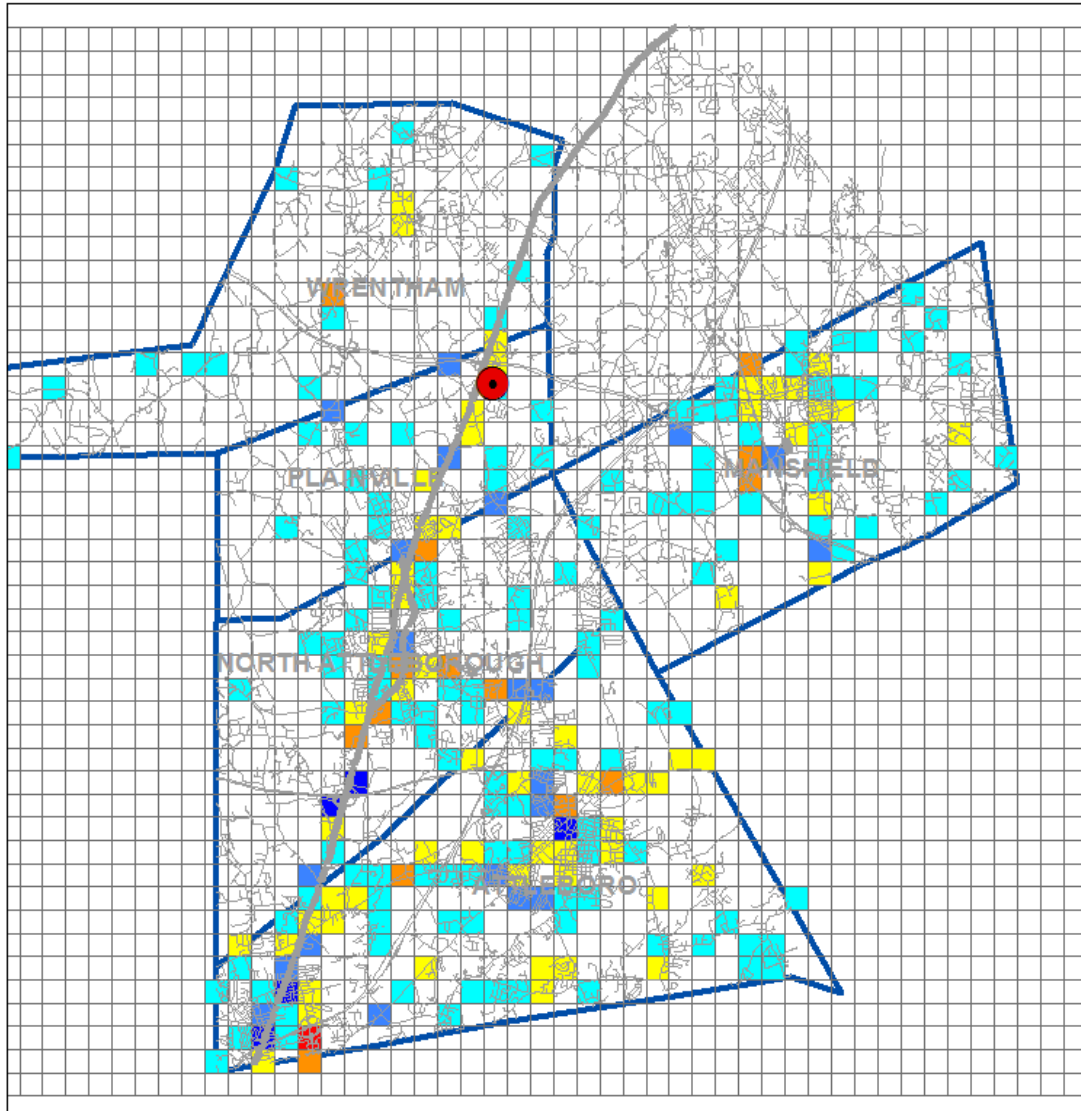
Plainville, Attleboro, Mansfield, North Attleboro, and Wrentham

Crime	July-Jun Avg.	St. Dev.	2016	Z
Alarms	4857.0	89.20	4845	-0.13
Disabled vehicles	1734.0	184.85	1734	-0.53
Disorderly	3250.6	238.16	2930	-1.35
General service	5125.4	337.53	5046	-0.24
Lost property	131.8	25.13	174	+1.68
Medical aid	1814.6	188.61	1856	+0.22
Psychological	351.2	33.59	452	+3.00
Suspicious activity	5774.0	364.52	6004	+0.63
Traffic collisions	4005.6	143.98	4285	+1.94
Traffic complaints	1582.8	156.34	1780	+1.26

Increase in traffic-related calls

- Traffic complaints up to 1,780 from average of 1583 (z=1.26) in region
 - Up to 311 from average of 235 in Plainville (z=2.39)
 - Up to 2380 from average of 168 in Attleboro (z=2.33)
 - Up to 572 from average of 478 in N. Attleborough (z=4.68)
 - Up to 230 from average of 168 in Mansfield (z=2.33)
 - Disabled vehicles also up to 85 from average of 58 in Plainville (z=2.65)
 - And suspicious activity (mostly vehicles) up to 785 from average of 605 in Plainville (z=6.83)
- Makes logical sense given extra traffic in area
 - Route 1 in particular responsible for large part of increase
- But other factors may be involved

Traffic collisions



Legend

- Plainridge Park
- Route 1 Corridor
- Difference**
- Significant Decrease
- Moderate Decrease
- Mild Decrease
- No Change
- Mild Increase
- Moderate Increase
- Significant Increase
- Contributing Towns

0 0.75 1.5 3 Miles

Notes from State Police Data

- No major increases in any crime or reactive call-for service categories
- Increase in traffic collisions in second half of 2015 balanced by decreases in first half of 2016
- Major increases in self-directed activities such as building checks and special enforcement in the region
- No influence of PPC detectable on state roads

Comparison communities

Area	Communities	Population (2010)	Square Miles	2014 IBR Total
Study	Plainville, Attleboro, Foxborough, Mansfield, North Attleborough, Wrentham	131,401	122.9	3,924
Comp 1	Berlin, Hudson, Marlborough, Northborough, Shrewsbury, Southborough, Westborough	139,230	124.9	3,519
Comp 2	Canton, Dedham, Norwood, Randolph, Westwood	121,622	62.4	3,953
Comp 3	Bedford, Concord, Lexington, Lincoln, Waltham, Weston	140,638	102.2	2,910

Changes, July-December 2015

Measure	Study Area	Comp 1	Comp 2	Comp 3	All	All MA
All Violent Crime	-5.5%	-14.9%	+6.8%	-17.0%	-8.0%	-7.0%
All Property Crime	-9.8%	-13.2%	-12.7%	-25.9%	-16.6%	-15.6%
Robbery	-59.8%	-15.1%	-35.0%	-46.4%	-34.6%	-19.8%
Burglary	-13.5%	-40.0%	-20.2%	-29.7%	-29.9%	-32.4%
Auto Theft	-46.5%	-18.4%	+11.1%	-11.1%	-3.6%	-10.3%
Counterfeiting/Forgery	-26.1%	-17.9%	-5.2%	+54.8%	+3.3%	-11.7%
Credit Card Fraud	+91.2%	+16.1%	-15.3%	-53.6%	-13.0%	+6.1%
Fraud/Con Games	+2.2%	+16.9%	+14.1%	+32.9%	+21.4%	+5.1%
Identity Theft	+38.9%	+96.2%	+77.6%	+187.2%	+100.6%	+25.1%
All Fraud/Forgery	+21.8%	+22.9%	+1.7%	+31.5%	+14.4%	+3.0%
Theft from a Vehicle	-28.1%	-25.0%	-15.5%	-62.8%	-34.3%	-25.4%
Drug Offenses	-22.9%	-32.1%	-12.6%	-30.7%	-21.9%	-5.3%

Summary

- In the first 6 months of activity, Plainridge Park produced crime and call figures commensurate with similarly-sized facilities in the region.
- Few significant increases in crimes in the surrounding area.
- Most significant increases were tied to traffic activity: complaints, collisions, disabled vehicles, suspicious vehicles.
- Major increase in credit card fraud disturbing/puzzling, but no specific evidence of Plainridge Park involvement.
- Some agencies seeing drunk driving increases, but data is inconsistent and phenomenon needs further study.

Summary

- In the first 6 months of activity, Plainridge Park produced crime and call figures commensurate with similarly-sized facilities in the region.
- Few significant increases in crimes in the surrounding area.
- Most significant increases were tied to traffic activity: complaints, collisions, disabled vehicles, suspicious vehicles.
- Some evidence of increases in economic crimes (credit card fraud, con games) tied to casino presence
- Further studies needed with full comparison datasets for crime and traffic collisions when data is available in 2017

Thank You!

Christopher W. Bruce

Trainer and consultant in crime analysis and
data-driven policing

978-853-3502

cwbruce@gmail.com