



# 21

COMMUNITY  
MITIGATION  
FUND

## APPENDIX G – RESERVE PLANNING/TRIBAL GAMING TECHNICAL ASSISTANCE PROGRAM APPLICATION

**BD-21-1068-1068C-1068L-56499**

***Please complete entire Application***

### **1. PROJECT INFORMATION**

#### **a) NAME OF MUNICIPALITY/GOVERNMENT ENTITY/DISTRICT**

Town of Agawam

#### **b) PROJECT NAME (LIMIT 10 WORDS)**

Suffield Street (Route 75), Cooper Street, Rowley Street Intersection Redesign

#### **c) BRIEF PROJECT DESCRIPTION (LIMIT 50 WORDS)**

Redesign of the intersection at Suffield Street, Cooper Street and Rowley Street. The project includes study of alternatives analysis including the feasibility of a roundabout. Once a concept design is selected, the selected Engineering Consultant will create construction ready plans. Improvements may include but not be limited to: the realignment of the roads at the intersection, upgraded signals including emergency pre-emption, bicyclist accommodations, and new sidewalks and curb cuts in accordance with the American With Disabilities Act and the Town's Complete Street Policy. See Attachment "A" for approximate limits of project and location in relation to MGM Casino.

#### **d) CONTACT PERSON(S)/TITLE (Persons with responsibility for this grant)**

Mario Mazza, DPW Superintendent  
Michelle Chase, Town Engineer  
William Sapelli, Mayor

#### **e) PHONE # AND EMAIL ADDRESS OF CONTACT PERSON(S)**

Mario Mazza - 413-821-0600, mmazza@agawam.ma.us  
Michelle Chase - 413-821-0600, mchase@agawam.ma.us  
William Sapelli - 413-786-0400, wsapelli@agawam.ma.us

#### **f) MAILING ADDRESS OF CONTACT PERSON(S)**

1000 Suffield Street  
Agawam, MA 01001

**2. IMPACT DESCRIPTION/CONNECTION TO GAMING FACILITY**

**a) Please describe in detail the impact that is attributed to the operation of a gaming facility.**

Once Covid-19 (and variants) subsides and the Route 147 Bridge Over the Westfield River is complete, Casino operations and events are expected to result in an increase in traffic through the route 75 corridor which includes this intersection. Residents in Agawam, Southwick, and Connecticut or visitors flying in from Bradley Airport who wish to avoid delays often experienced on Route 91 will likely travel through this intersection. During late afternoon commutes, vehicular traffic can back up on the South End Bridge and Route 57 heading east. With improvements recently made at the Route 147 Bridge and neighboring intersections and future improvements planned along Memorial Ave, this intersection will become a congestion point in the near future. With the anticipated increase in congestion, the need to provide a more efficient and complete streets friendly design at this intersection will become an even higher priority than it is today.

**b) Please provide documentation, specificity or evidence that gives support for the determination that the operation of the gaming facility caused or is causing the impact (i.e. surveys, data, reports).**

Due to Covid-19 and construction of the Route 147 Bridge over the Westfield River, traffic numbers through this intersection have been reduced compared to previous levels. Construction on the Route 147 Bridge has recently been completed. This intersection has recently seen a minor increase in traffic since last year, but is expected to see an even more significant increase as it is within a corridor that residents of Agawam, Suffield, CT, and neighboring communities will use to get to and from the Casino. Also, motorists who choose to avoid Route 91 traveling from Bradley Airport, may choose to pass through this intersection as Route 75 and 147 provide a direct non-highway route to downtown Springfield.

**c) How do you anticipate your proposed remedy will address the identified impact.**

The goal of the project is to reduce traffic congestion for all approaches, improve emergency response times by incorporating an emergency pre-emption system, and addressing bicyclist and pedestrian safety issues by constructing a complete streets friendly design. The current intersection is undersized for the amount of traffic that travels through it on a daily basis. This is a 5-way intersection with each approach only having one lane. Motorists are unable to pass vehicles that are waiting to make a left turn resulting in back-ups. The proposal will address this issue by either adding left turn lanes or by replacing the intersection with a roundabout. Improved signal timing, camera detection, emergency pre-emption and ADA/complete streets accommodations will improve the level of service, safety, and reduce congestion/delays for all users.

**3. PROPOSED MITIGATION (Please attach additional sheets/supplemental materials if necessary.)**

**a) Please identify the amount of funding requested**

We are requesting \$100,000 to assist in funding the design of this project.

**b) Please identify below the manner in which the funds are proposed to be used. Please provide a detailed scope, budget and timetable for the use of funds.**

The funds will be used to pay an engineering consulting firm to work with the Town of Agawam on creating construction ready plans for the intersection. While the final scope is not currently available, it is anticipated that the project will start with a planning/engineering study that will first assess the intersection for deficiencies in accommodations for vehicular traffic, pedestrian, bicyclists, and ADA compliance. A Road Safety Audit will likely be performed to allow for input from Police, Fire, DPW, Schools, Public, MassDOT, PVI, etc. An Alternatives Analysis Report will be created which will propose several different concept plans including a possible roundabout design. The alternative that provides the most fiscally reasonable plan while addressing congestion mitigation and safety improvements for all users of all abilities to the best extent practicable will be chosen. The Town will then work with the engineering consultant to create construction ready plans for implementation. The overall budget for this work will be determined once a consultant is brought on board for the project. Any additional funds needed above and beyond the \$100,000 mitigation funding will be provided by the Town (local/chapter 90 funds.). The anticipated timetable is to perform the planning/design work in the fall/winter of 2021-2022. ROW takings (if necessary), and pulling the bid out for Construction in Spring/Summer 2022, with construction starting in late 2022/early 2023. The town is planning to perform the advertisement of this project. The project will be designed to meet ADA, MassDOT, Town of Agawam, and other applicable standards.

**c) Please provide documentation (e.g. - invoices, proposals, estimates, etc.) adequate for the Commission to ensure that the funds will be used for the cost of mitigating the impact from the operation of a proposed gaming establishment.**

Documentation unavailable at this time. An On-call Engineering Firm Selection process is currently underway. Once a consultant is selected, the proposal, estimate, invoices, etc. for the project can be made available if necessary. All funds from this grant will be exclusively used on the contract between the Town and the selected consultant/engineering firm. The funds will be retained in a grant account, pursuant to G.L. c.44, section 53A, and could only be expended for the purposes stated herein and in the grant.

**d) Please describe how the mitigation request will address the impact indicated.**

If approved, this mitigation request will help fund this project design so that construction can begin as soon as possible. Improvements to the intersection will help mitigate the anticipated increase in traffic due to the casino.

**4. INTERNAL CONTROLS/ADMINISTRATION OF IMPACT FUNDS**

**a) Please provide detail regarding the internal controls that will be used to ensure that funds will only be used in planning to address the impact.**

All funds received from this grant will be used exclusively on the contract between the Town and the selected consulting engineering firm. When awarded the grant, a copy of the final executed contract between the Town and the firm can be provided to the Gaming Commission as well as a copy of the purchase order documenting the use of the grant and Town funds used on the project. The funds will be retained in a grant account, pursuant to G.L. c.44, section 53A, and could only be expended for the purposes stated herein and in the grant.

**b) If non-governmental entities will receive any funds, please describe what reporting will be required and how the applicant will remedy any misuse of funds.**

No non-governmental entities will directly receive funding. 100% of funds will go toward the development of construction ready plans for an intersection improvement project. The project will not be used to benefit any private property. All improvements will be within the municipally owned right of way or easements. A contract with the selected engineering consultant will be executed between the town and the Engineering firm. Payments of invoices will be reviewed by multiple municipal departments and can be made available if needed.

**5. CONSULTATION WITH REGIONAL PLANNING AGENCY (RPA) / NEARBY COMMUNITIES**

**Please provide details about the Applicant's consultation with the Regional Planning Agency serving the community and nearby communities to determine the potential for cooperative regional efforts regarding planning activities.**

While there has not yet been any consultation with the Pioneer Valley Planning Commission for this specific project, it is anticipated that they will be called upon for input on the project once an Engineering firm is brought in to assist in the development of the plans. The Town of Agawam has been working with the PVPC on many projects over the years. They have assisted in intersection safety studies for the Feeding Hills Intersection and the Pine and Barry Street intersection. They also worked with the Town on our Walnut Street Extension Improvement study. In addition, PVPC has worked with Agawam on many projects involving: stormwater/MS4 NPDES compliance, subdivision regulation revisions, and neighborhood studies. PVPC also worked directly with the Town and MassDOT to push for safety and Complete Streets Improvements on the Route 147 Over the Westfield River project. Agawam regularly attends Pioneer Valley Joint Transportation Committee meetings which are hosted/managed by the PVPC. We anticipate the PVPC playing an active role in the development of this project.

**6. MATCHING FUNDS FROM GOVERNMENTAL OR OTHER ENTITY**

**a) Please demonstrate that the governmental or other entity will provide significant funding to match or partially match the assistance required from the Community Mitigation Fund.**

The Town of Agawam is committed to contributing at least up to an additional \$25,000.00 in funding to cover the total cost of the design. This translates to up to a 25% matching contribution to the \$100,000 request. The Town currently has these funds available and will reserve them for this project.

**b) Please provide detail on what your community will contribute to the planning projects such as in-kind services or planning funds.**

In addition to the funding mentioned in 6a, the Town of Agawam will contribute engineering in-kind services as it related to the design development of the intersection. This may include but not be limited to: plan research, traffic data collection, survey data collection, meetings with the selected consultant, public outreach, right of way (ROW) impact research, ROW takings, funding for independent appraisals/review appraisals, legal services, and funding for any land takings/easement takings.

**7. RELEVANT EXCERPTS FROM HOST OR SURROUNDING COMMUNITY AGREEMENTS AND MASSACHUSETTS ENVIRONMENTAL POLICY ACT (MEPA) DECISION**

**a) Please describe and include excerpts regarding the transportation impact and potential mitigation from any relevant sections of any Host or Surrounding Community Agreement.**

In Agawam's Surrounding Community Agreement - Exhibit "A", Section A. Study Scope, Part 1. Potential Areas of Adverse Impact, Item b. it states that: "Traffic Improvement Needs Directly Related to Travel to and from the Project Site based upon traffic analysis conducted by, or at the direction of, the Pioneer Valley Planning Commission (PVPC), similar in scope and process as that being conducted by PVPC as of the date of this agreement."

**b) Where applicable, please also briefly summarize and/or provide page references to the most relevant language included in the most relevant MEPA certificate(s) or comment(s) submitted by the community to MEPA.**

The MEPA Certificate for the casino did not include the area within the anticipated limits of this intersection improvement project. It did include Memorial Avenue in West Springfield (page 9 of the December 21, 2014 FEIR). With improvements recently completed at the Route 147 Bridge between Agawam and West Springfield and proposed improvements starting next year on Memorial Ave to the bridge into Springfield, this intersection is the next in line along this corridor between Connecticut and the Casino (along routes 75 and 147). No MEPA certificates or comments have been made regarding this specific project yet as the design process has not yet begun.

**c) Please explain how this impact was either anticipated or not anticipated in that Agreement or such MEPA decision.**

The MEPA Certificate for the casino did not include the area within the anticipated limits of this intersection improvement project. Any additional information related to this specific project can be provided once a consultant is selected and the project design begins.

**d) If transportation planning funds are sought for mitigation not required under MEPA, please provide justification why funding should be utilized to plan for such mitigation. For example, a community could provide information on the significance of potential impacts if trip generation totals exceed projected estimates.**

The original traffic study for the casino primarily focused on passenger vehicle volumes through the study area but didn't focus in detail on unanticipated impacts to other modes of travel such as walking, bicycling, and transit. We believe that an increase in vehicular volumes due to casino traffic will have an impact on the level of service for not only motorists but also pedestrian, bicyclists and transit in this area. This intersection is also within the student walking areas for two schools (Agawam High School and Middle School). More detailed information regarding anticipated impacts and how we plan to mitigate them can be provided once a consultant is selected and the project design begins.

**8. CERTIFICATION BY MUNICIPALITY/GOVERNMENTAL ENTITY**

On behalf of the aforementioned municipality/governmental entity I hereby certify that the funds that are requested in this application will be used solely for the purposes articulated in this Application.

*William P. Sapelli*

Date:

*9/24/21*

Signature of Responsible Municipal  
Official/Governmental Entity

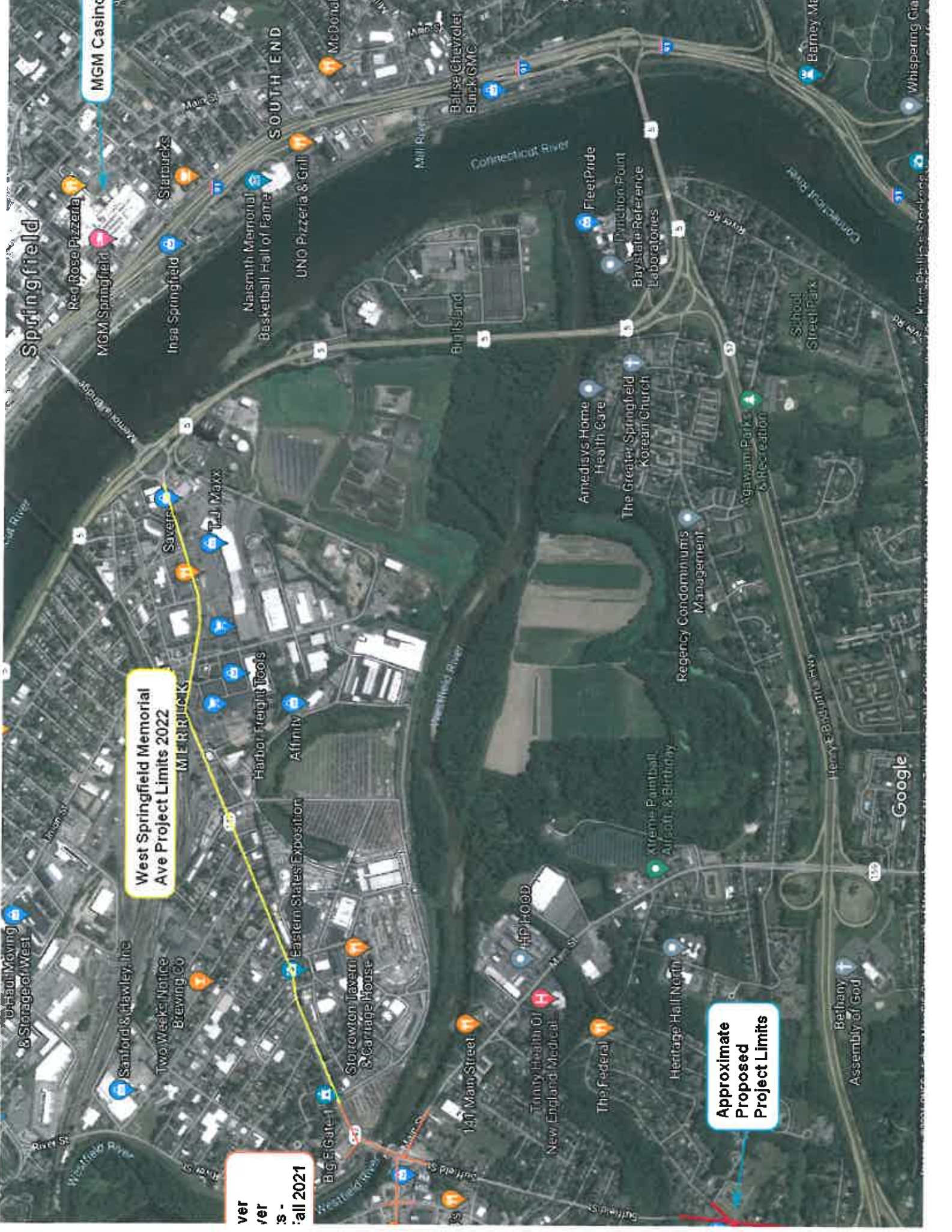
*William P. Sapelli*

(print name)

*Mayor*

Title:





MGM Casino

West Springfield Memorial Ave Project Limits 2022

Approximate Proposed Project Limits

ver  
er  
s -  
: all 2021

Springfield

Sanford & Hawley Inc  
Two Weeks Notice Brewing Co  
BIG FIGHT 1  
Westfield River  
River St  
Westfield River

Insa Springfield  
Starbucks

METRAKOS  
Savere  
T.J. Maxx  
Harbor Freight Tools  
Affinity

Naismith Memorial Basketball Hall of Fame  
UNO Pizzeria & Grill

Storowton Tavern & Carriage House  
Eastern States Exposition  
14th Main Street  
Tommy Health Of New England Medical  
The Federal

McDonald's  
Ballise Chevrolet Buick GMC

Bulls Island

Amedisys Home Health Care  
The Greater Springfield Korean Church  
FleetPride  
Dyction Point Baystate Reference Laboratories

Regency Condominiums Management

Bethany Assembly of God

Ngawang Parks & Recreation  
Subdol Street Park

Google

Whispering Ciar