

*Wynn* RESORTS<sup>®</sup>

Wynn Resorts

---

# ACTIVITIES FOLLOWING LICENSURE

# Payments to Surrounding Communities

**Cambridge:** \$200,000

**Chelsea:** \$300,000

**Medford:** \$250,000

**Malden:** \$1,000,000

**Somerville:** \$150,000

**TOTAL:** \$1.9 million

# Satisfaction of License Conditions

1. **Section 2, Item 4:** Payment of \$85 million License Fee ✓
2. **Section 2, Item 5:** Payment of Assessment Fee ✓
3. **Section 2, Item 7:** Issued \$122,510,00 Deposit Bond ✓
4. **Section 2, Item 8:** Acquired land for Gaming Establishment ✓
5. **Section 2, Item 12:** Submitted Diversity Plan for MGC approval (unanimously approved) ✓
6. **Section 3, Item 2:** \$1 million payment for the benefit of City of Boston (submitted in escrow to MGC) ✓

# Satisfaction of License Conditions

## 7. **Section 4, Item 6:** Community Outreach to Charlestown neighborhood


- February 11, 2015: Public Meeting
- March 9, 2015: Environmental Remediation
- March 10, 2015: Jobs
- March 11, 2015: Transportation
- **SCHEDULED** March 24, 2015: Sullivan Square/Rutherford Avenue

## 8. **Section 4, Item 8:** Submission of PIC application relating to Wynn's Sullivan Square mitigation

# Satisfaction of License Conditions

**9. Section 5, Item 1:** Reconsideration of exterior design of the buildings 

- Revised renderings presented to MGC on January 22, 2015

**10. Section 5, Item 3:** Hiring preference to qualified Suffolk Downs employees 

Wynn Resorts

---

**SFEIR**

# Timeline

**Filed on**  
February 17, 2015

**Comments due on**  
March 27, 2015

**Anticipated Secretary's  
Certificate on**  
April 3, 2015



# Project Refinement



# Project Refinement

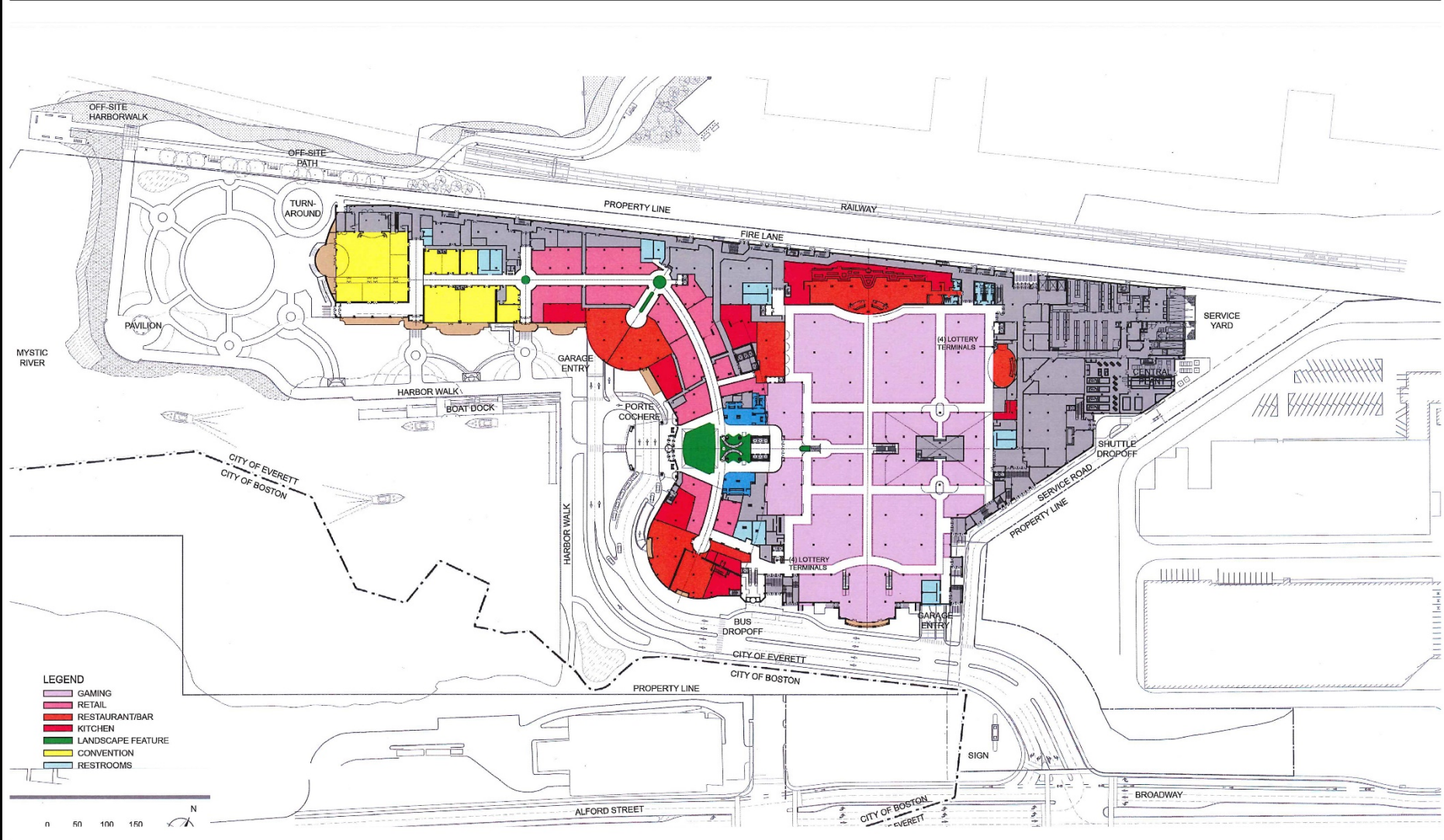
Element	As Described in FEIR (square feet unless otherwise noted)	As refined and evaluated in SFEIR (square feet unless otherwise noted)	Change number	Change: square feet
Hotel Rooms	504 keys	629 keys	125	
Hotel Tower	543,677	621,774		78,097
Gaming	192,543	190,461		(2,082)
Total Gaming Positions	4,160	4,580	420	
Retail (includes hotel and gaming areas)	77,250	52,632		(24,618)
Food/Beverage	64,593	54,680		(9,913)
Convention / Meeting	32,942	37,068		4,126
Spa / Gym	13,130	15,405		2,275
Entertainment / Nightclub	30,392	0		(30,392)
Back-of-House (includes MEP)	383,725	411,058		27,333
Front-of-House Support (includes restrooms, lobbies, etc.)	75,473	58,548		(16,925)
Total Parking Spaces	4,500 spaces	4,200 spaces	(300)	
Parking Spaces on-site	3,700 spaces	3,400 spaces	(300)	
Parking Spaces off-site	800 spaces	800 spaces		
Parking Garage	1,624,970	1,627,751		2,781
<b>Total On-Site Gross Floor Area</b>	<b>3,038,695</b>	<b>3,096,700</b>		<b>58,005</b>



# Proposed Conceptual Site Plan

Wynn Resort in Everett

Supplemental Final Environmental Impact Report



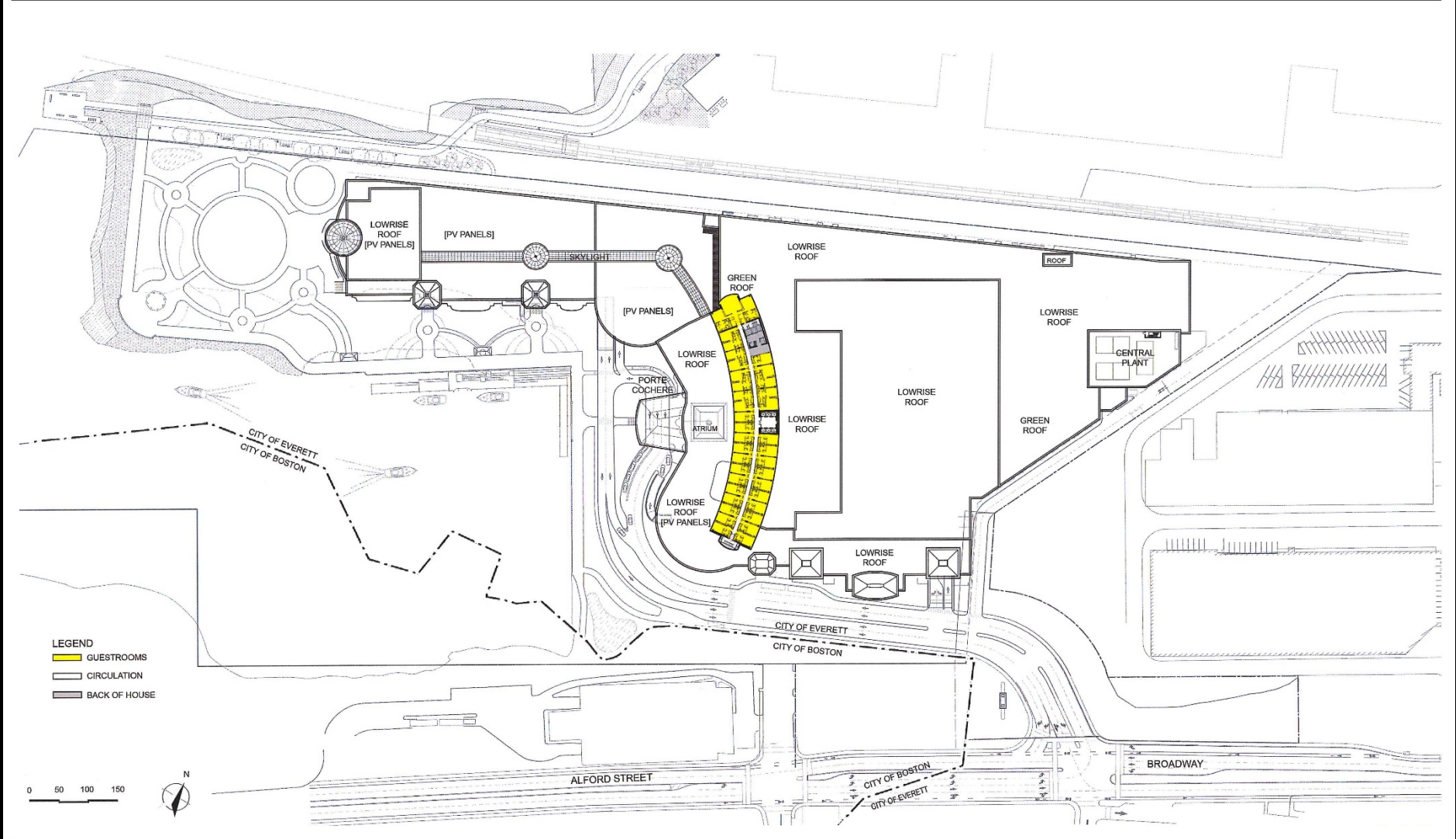
Wynn Everett  
Everett, Massachusetts

Figure 1-5  
Proposed Conceptual Site Plan  
Source: Lifescapes International, Inc., 2015

# High Rise Floor Plan Levels 1-22

Wynn Resort in Everett

Supplemental Final Environmental Impact Report



Wynn Resort in Everett  
Everett, Massachusetts

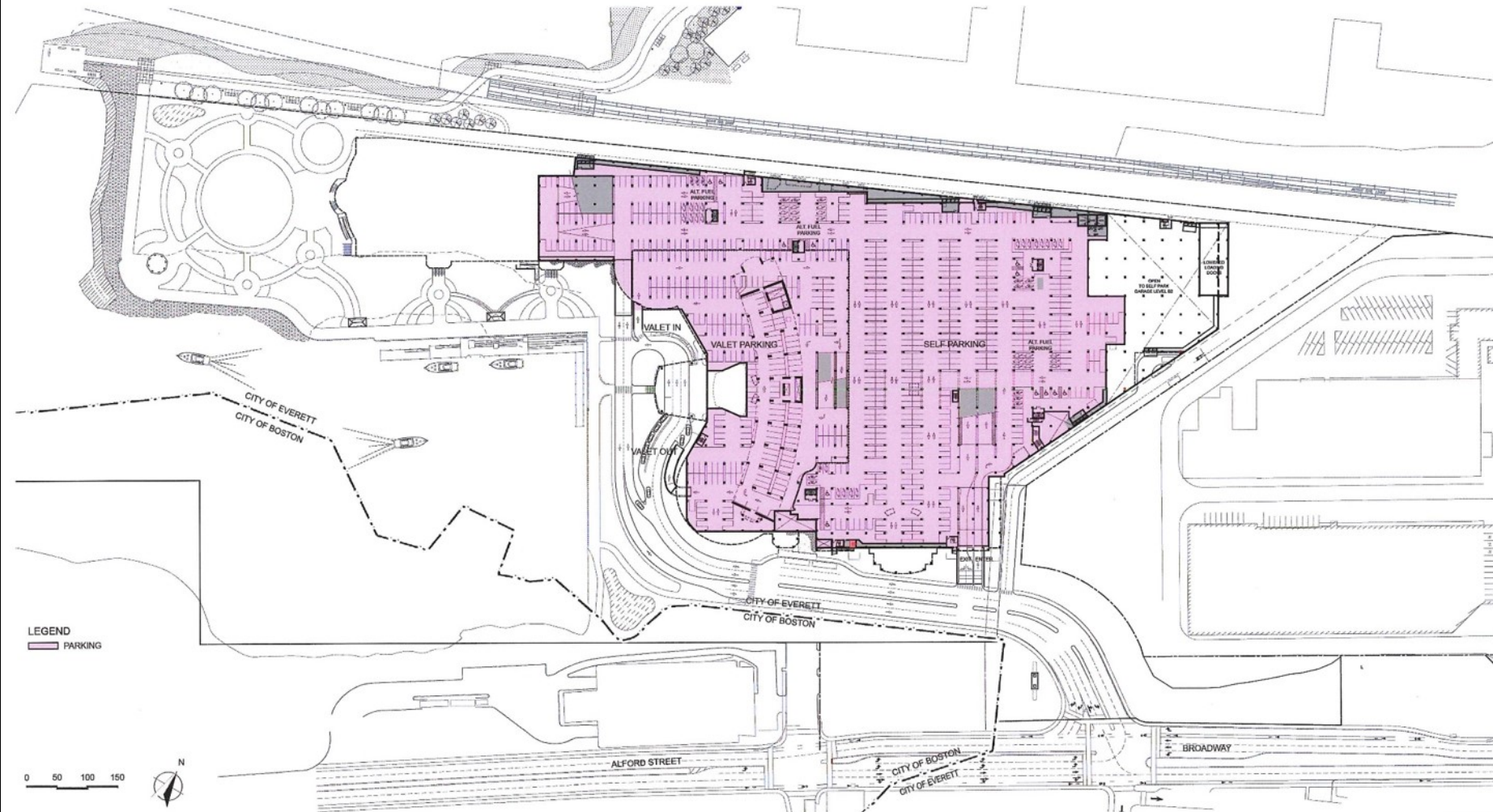
Figure 1-9  
**High Rise Floor Plan Levels 1-22**  
Source: Lifescapes International, Inc., 2015



# Parking Level B1

Wynn Resort in Everett

Supplemental Final Environmental Impact Report



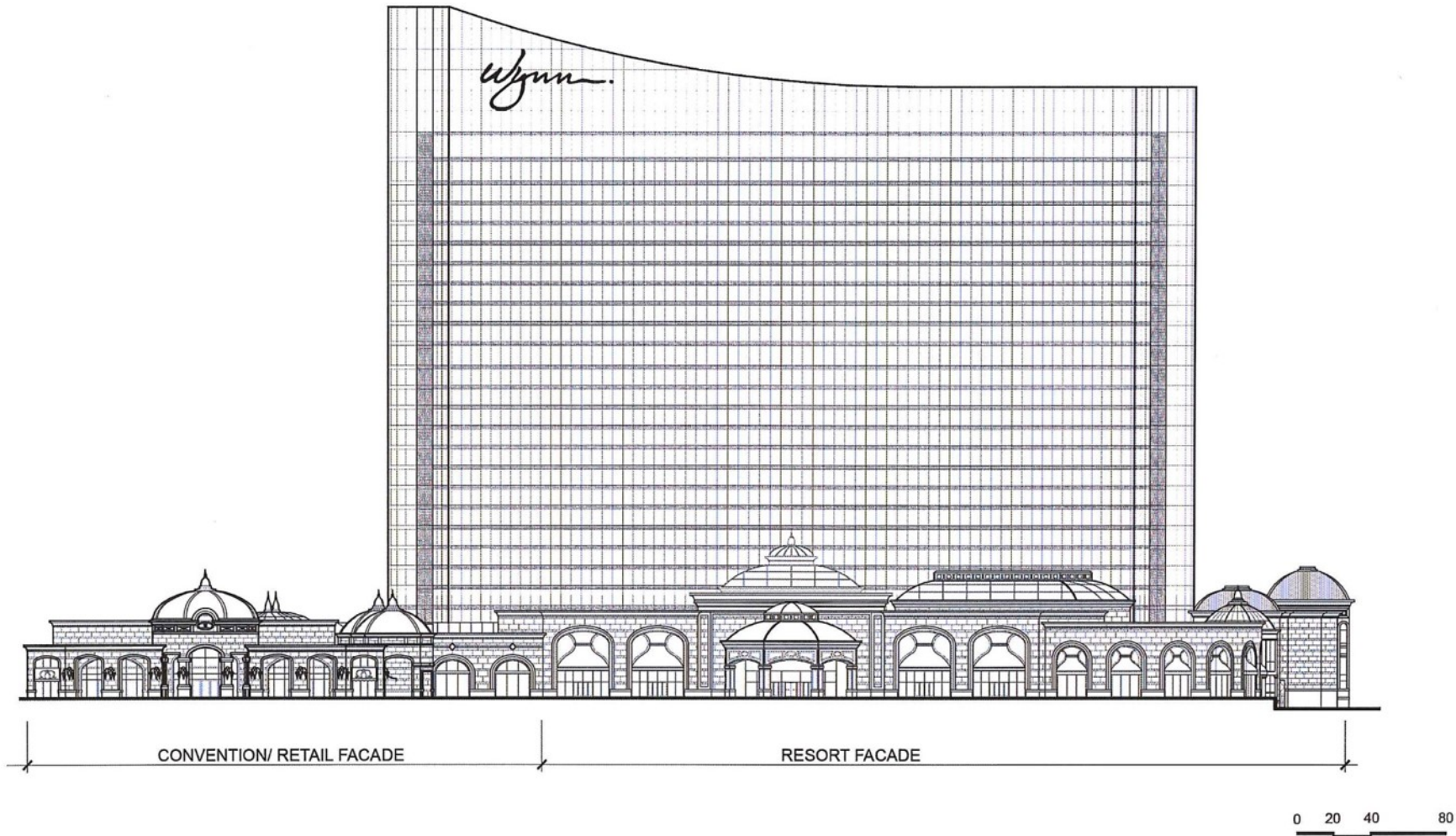
Wynn Resort in Everett  
Everett, Massachusetts

Figure 1-12  
Parking Level B1  
Source: Lifescapes International, Inc., 2015

# Overall South Elevation

Wynn Resort in Everett

Supplemental Final Environmental Impact Report



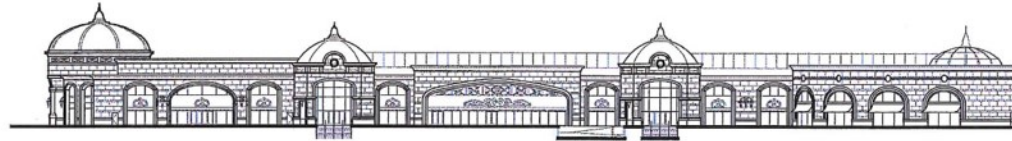
Wynn Resort in Everett  
Everett, Massachusetts

Figure 1-21  
**Overall South Elevation**  
Source: Wynn Design & Development, LLC, 2015

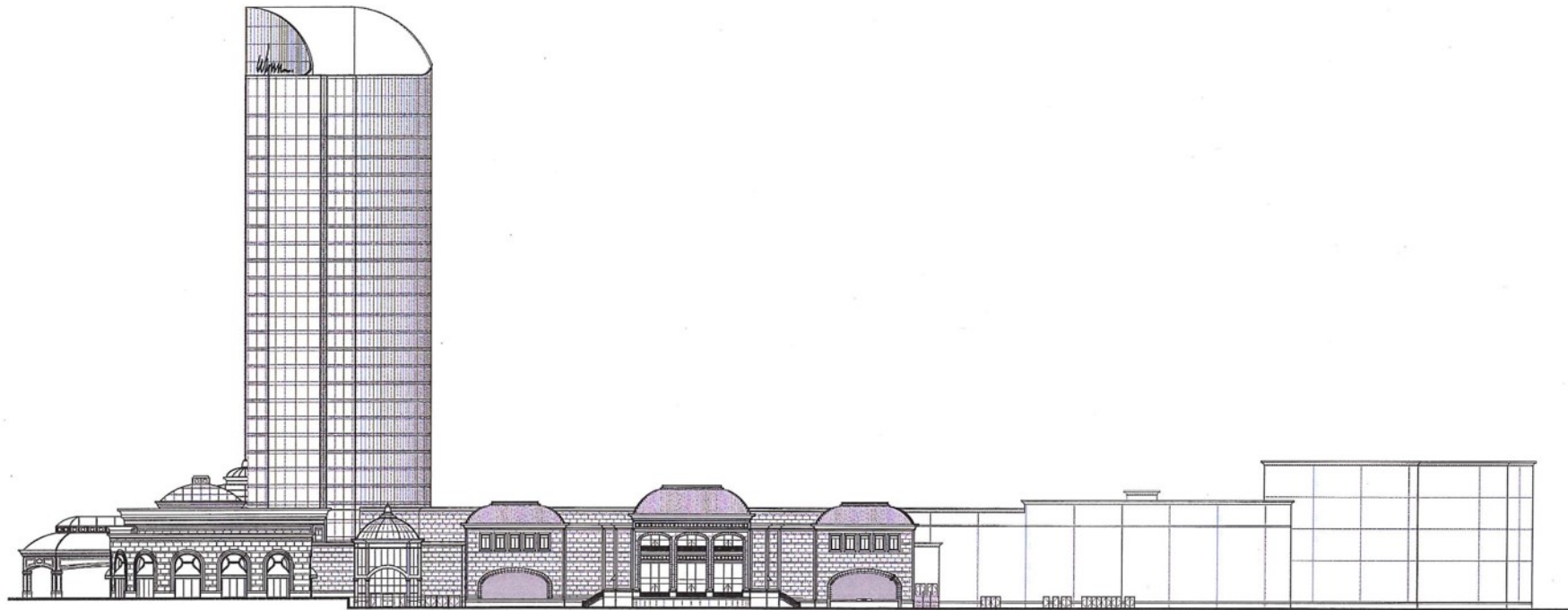
# Overall East Elevation

Wynn Resort in Everett

Supplemental Final Environmental Impact Report



CONVENTION/RETAIL FACADE



EAST RESORT FACADE

0 20 40 80

Wynn Resort in Everett  
Everett, Massachusetts

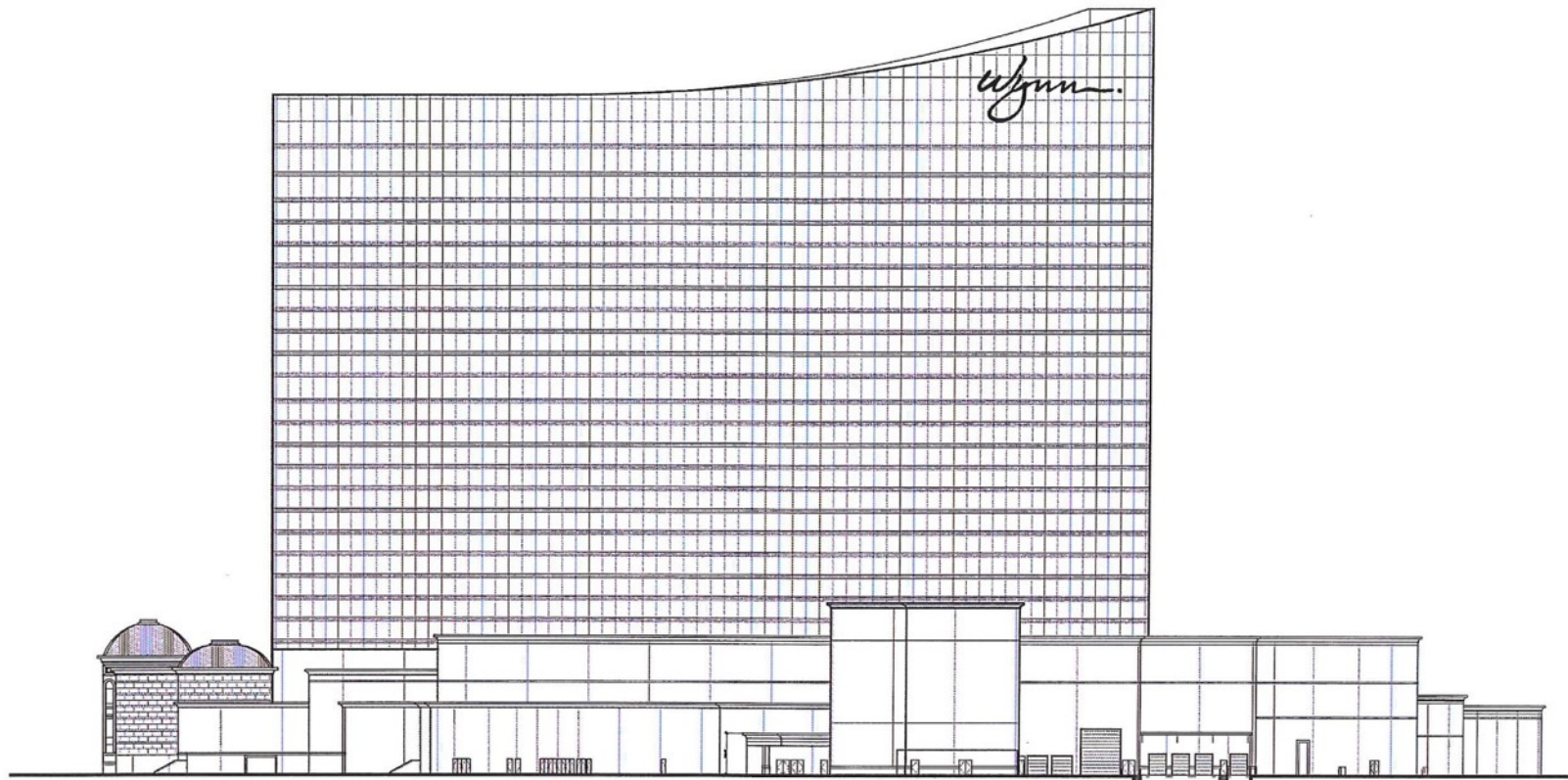
Figure 1-20  
**Overall East Elevation**  
Source: Wynn Design & Development, LLC, 2015



# Overall North Elevation

Wynn Resort in Everett

Supplemental Final Environmental Impact Report



Wynn Resort in Everett  
Everett, Massachusetts

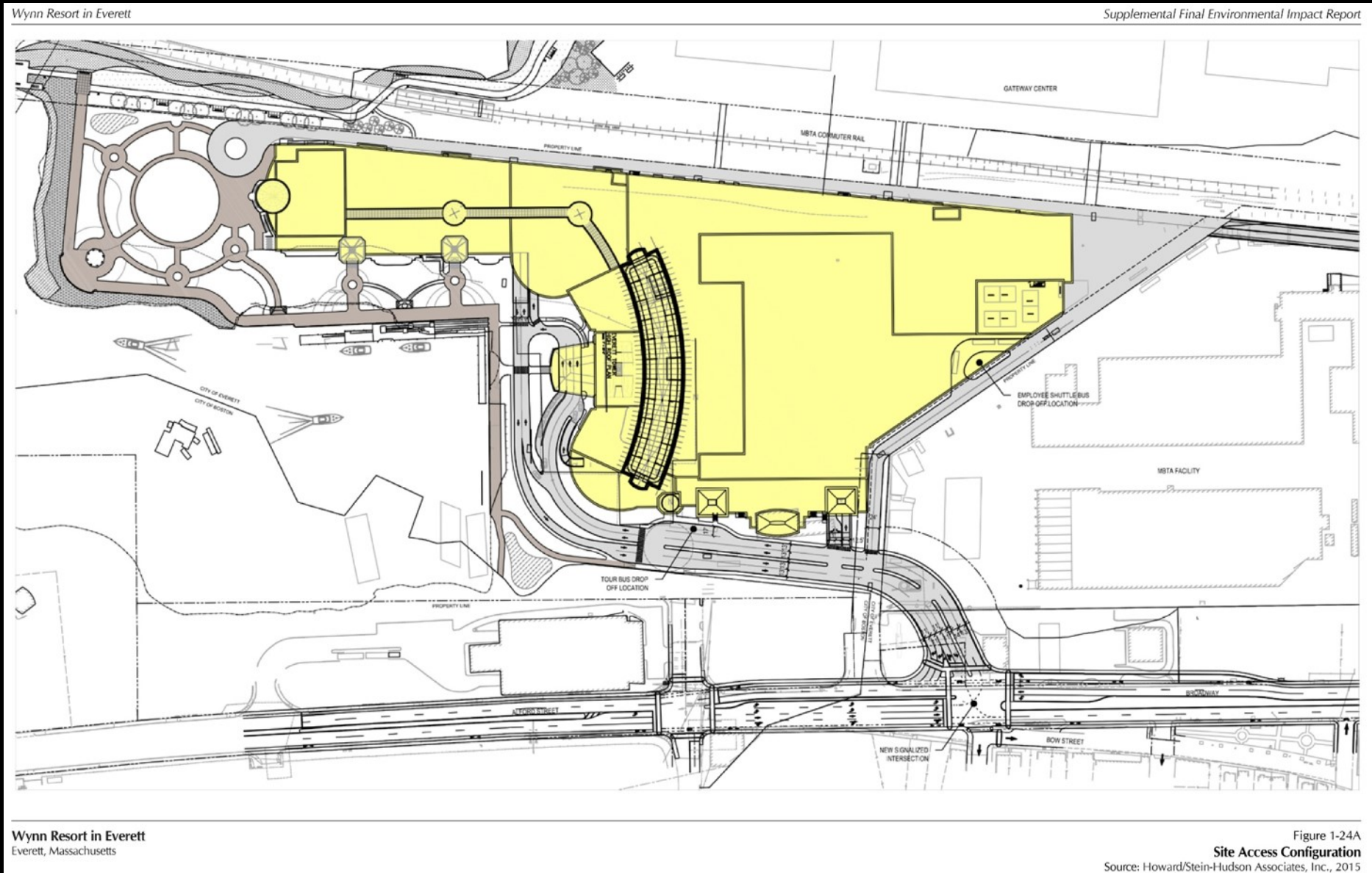
Figure 1-22

Overall North Elevation

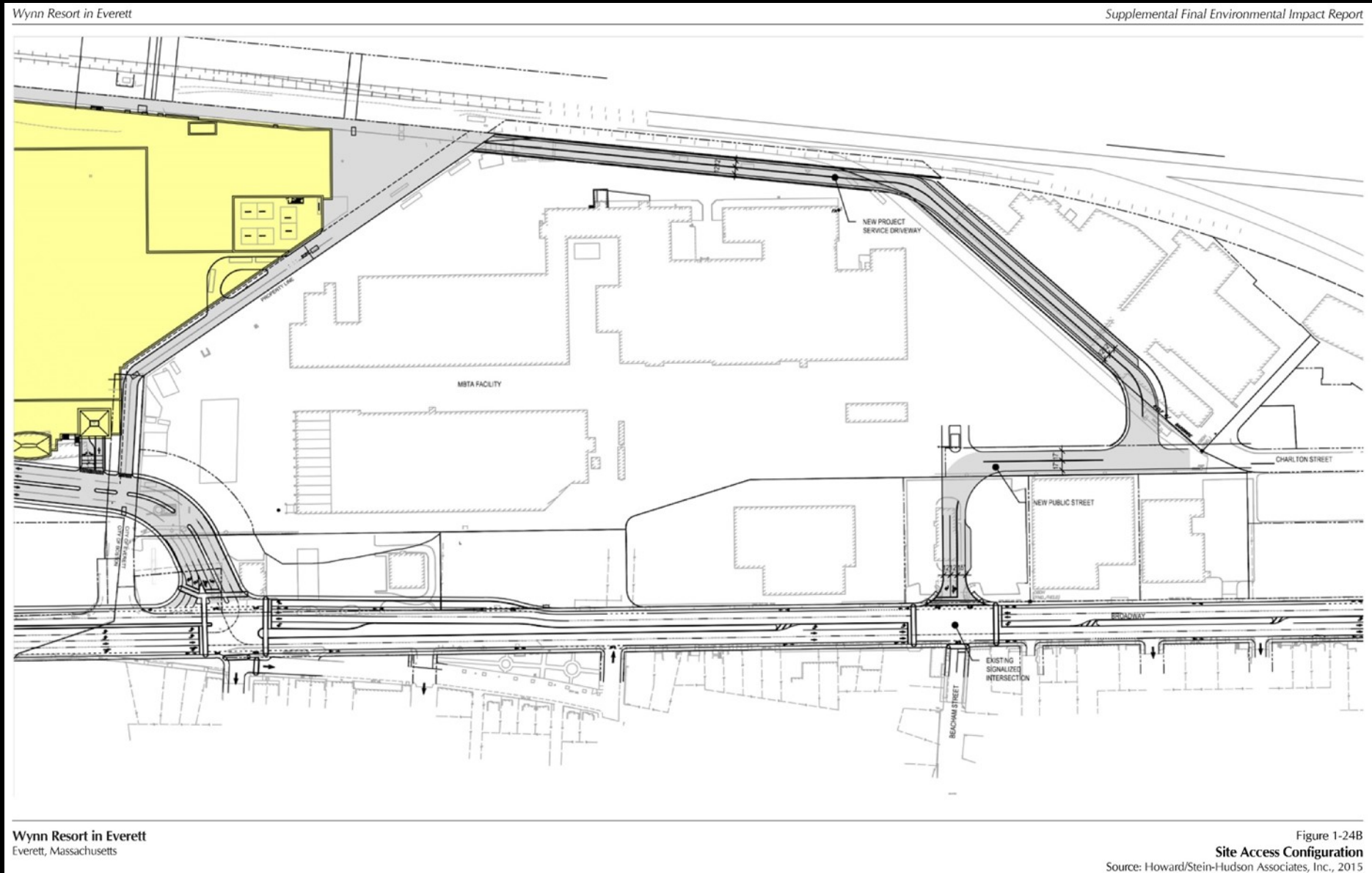
Source: Wynn Design & Development, LLC, 2015



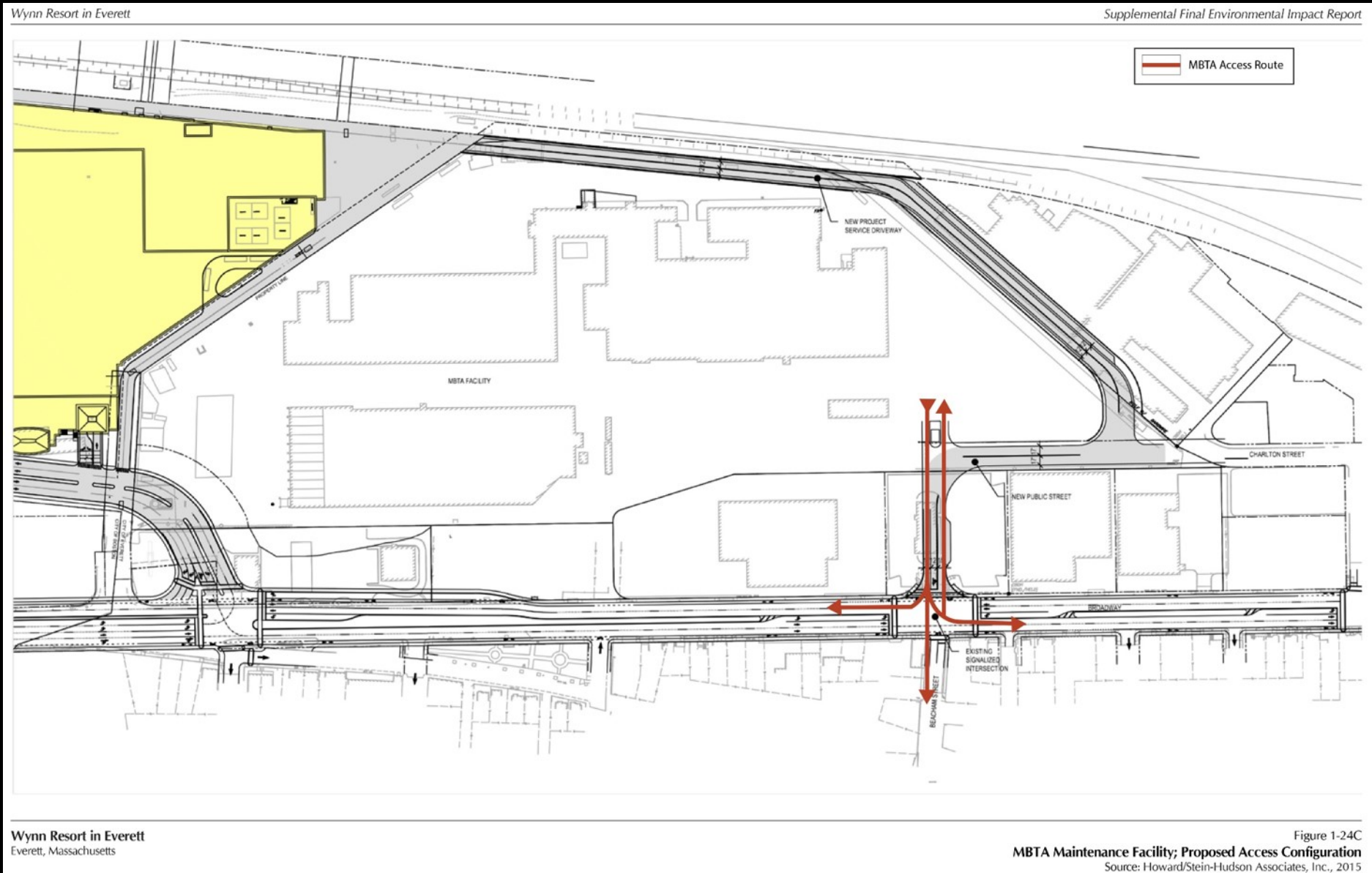
# Site Access Configuration



# Site Access Configuration



# MBTA Maintenance Facility



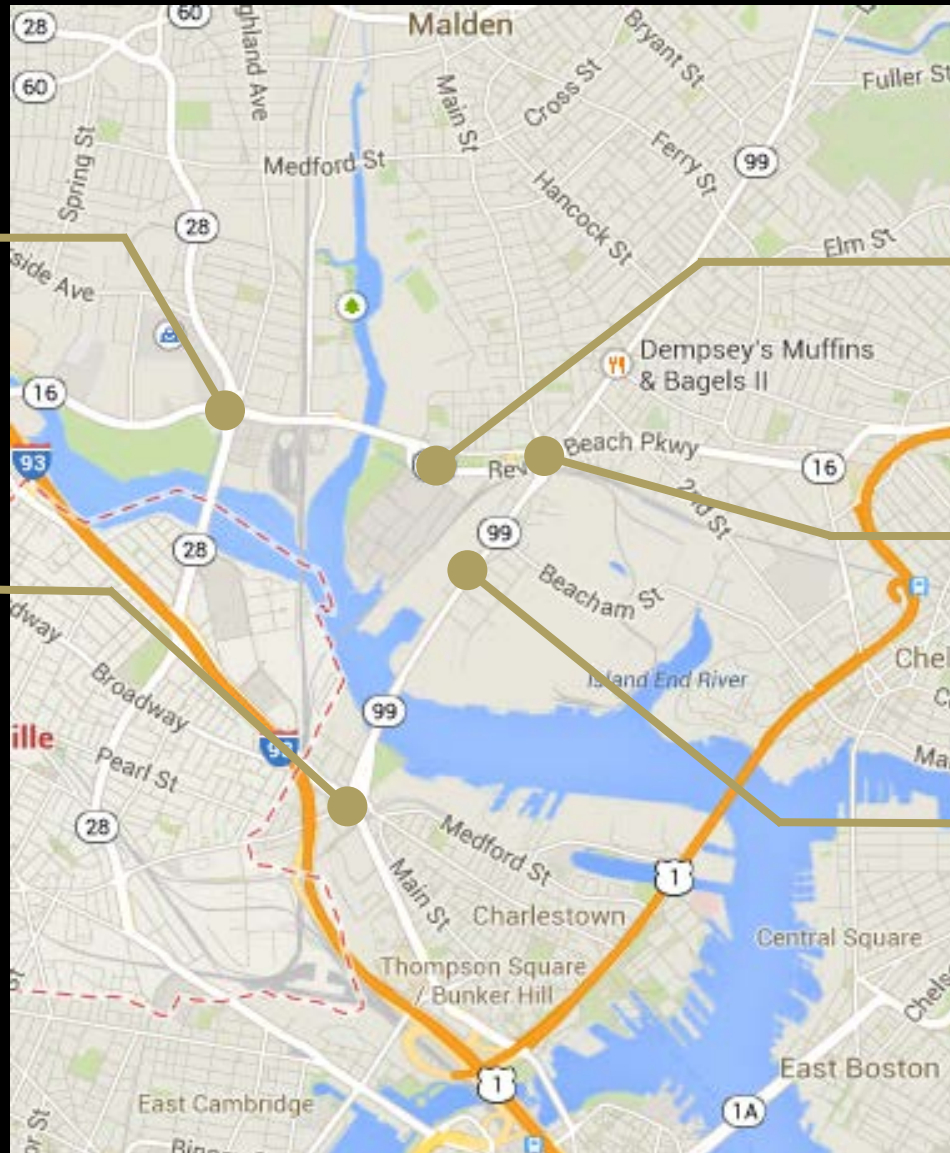


# Wynn's Roadway Improvement Plan

\$65-85 Million

Wellington Circle,  
Medford

Sullivan Square and  
Cambridge Street,  
Boston



Santilli Circle,  
Everett

Sweetser Circle,  
Everett

Lower Broadway  
Everett

*Wynn* RESORTS<sup>®</sup>