

# THE TOWN OF LONGMEADOW

PETITION FOR SURROUNDING COMMUNITY  
DESIGNATION

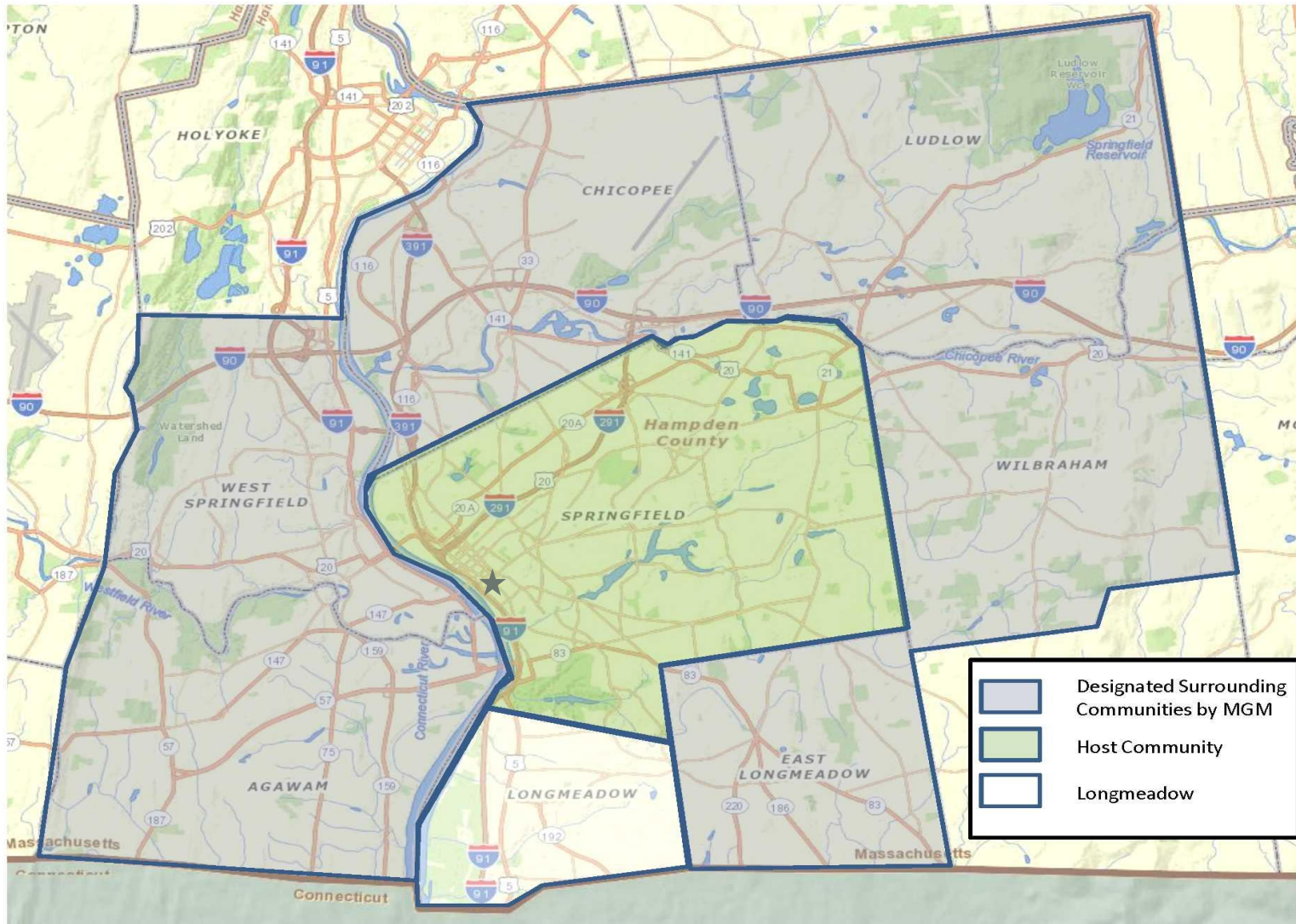


# LONGMEADOW

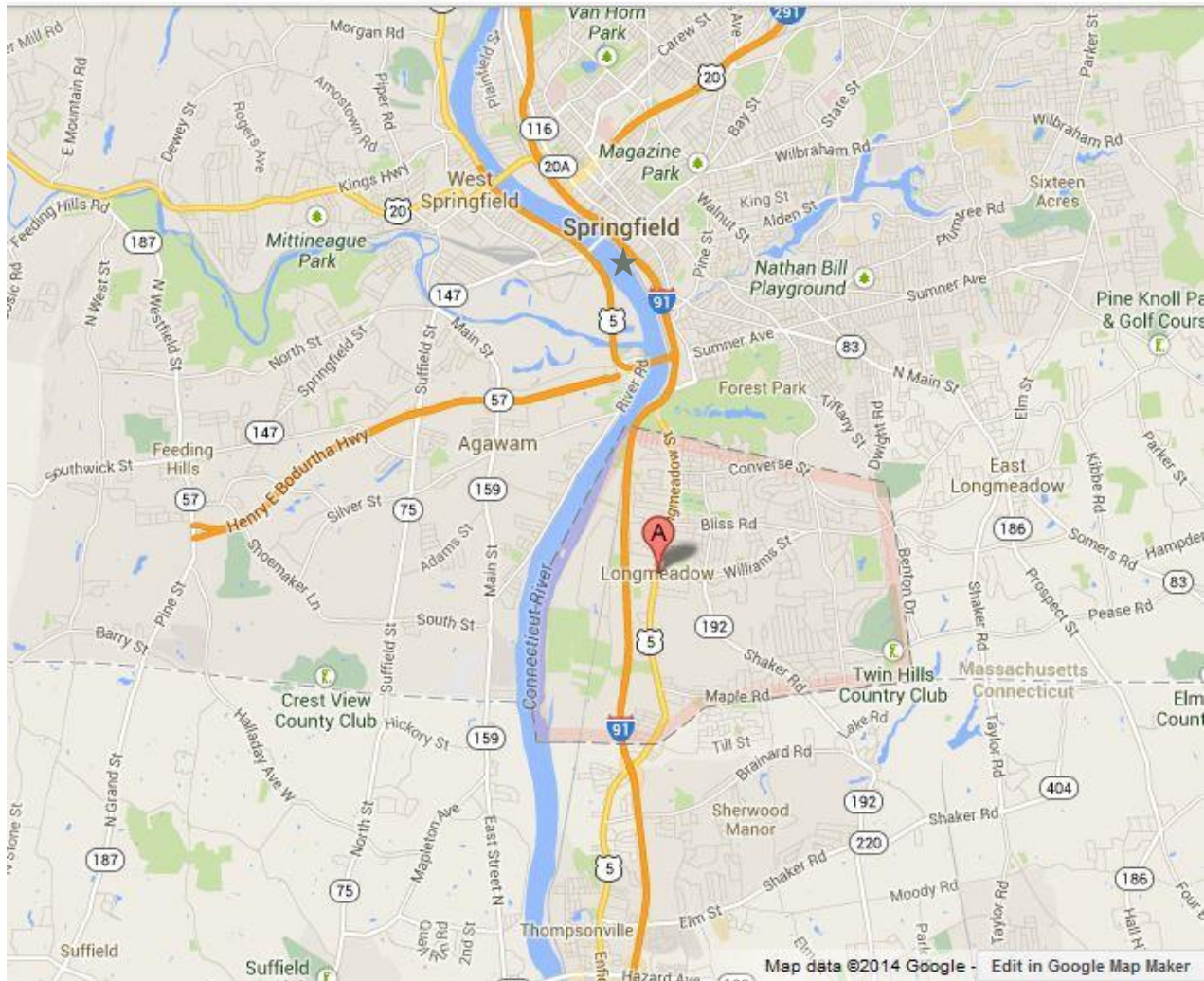
- Proximity
  - MGM does not contest MGM's proximity
- Traffic/Transportation Infrastructure
  - MGM's focus includes Connecticut – including Hartford/West Hartford – 30% of MGM's predicted market is in Connecticut
  - MGM's trip distribution modeling identified the largest number of vehicles traveling to MGM Springfield from the south
  - Through the Regional Planning Agency, Greenman-Pedersen, Inc. (GPI) was retained to conduct an independent peer review

# LONGMEADOW



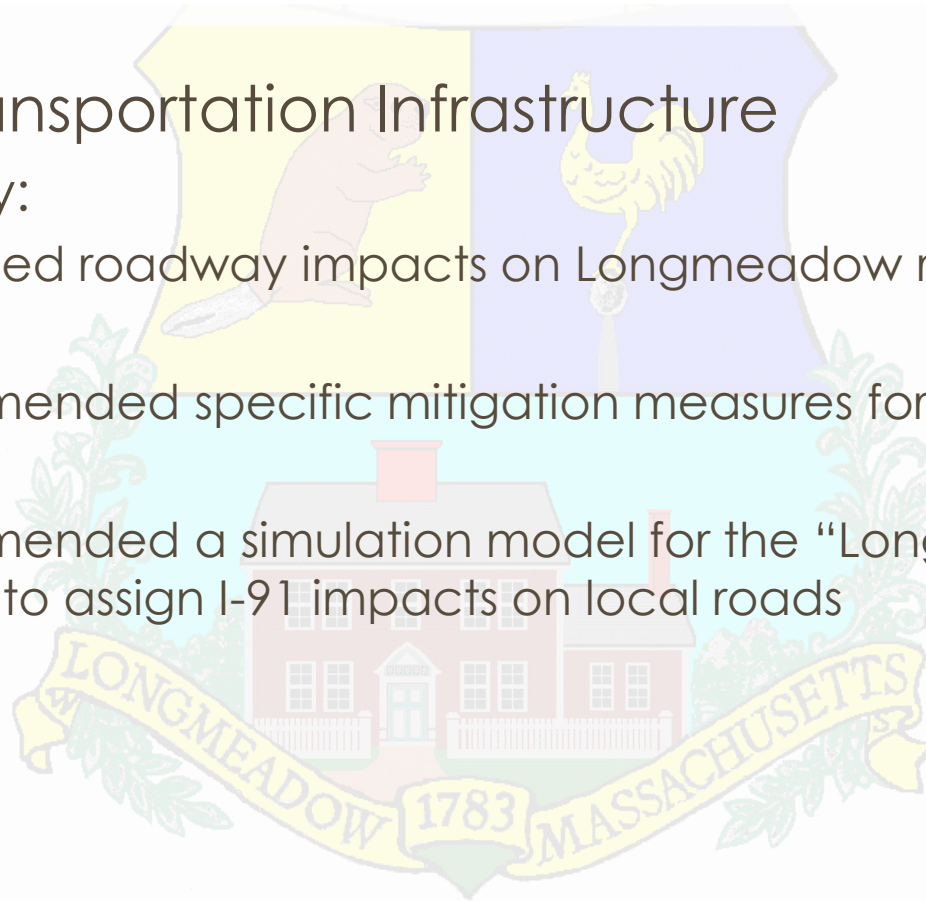


# LONGMEADOW



# LONGMEADOW

- Traffic/Transportation Infrastructure
  - GPI Study:
    - confirmed roadway impacts on Longmeadow roads
    - recommended specific mitigation measures for local roads
    - recommended a simulation model for the “Longmeadow Curve” to assign I-91 impacts on local roads



# LONGMEADOW

- Traffic/Transportation Infrastructure
  - MGM fails to account for the use of Longmeadow roads as a bypass to the I-91 – **which was confirmed by MassDOT** in a letter dated January 9, 2014 (Exhibit 36):
    - “Longmeadow St./Converse St. (U.S. 5) [is] a National Highway System arterial with regional significance, especially as the **only viable North-South alternative** to travel on the Interstate in that area.”
    - “Longmeadow St. and Laurel St. corridors are listed as regional congestion ‘bottlenecks’”

(Emphasis added)

# LONGMEADOW

- Traffic/Transportation Infrastructure
- The GPI Study recommended that Longmeadow seek specific funds to mitigate the signalized intersections at:
  - Longmeadow Street (Route 5) at Converse Street
  - Longmeadow Street (Route 5) at Forest Glen Road
  - Converse Street at Laurel Street





# LONGMEADOW

- Traffic/Transportation Infrastructure
  - Parsons Brinckerhoff recommended and provided estimates for mitigation measures at the following intersections/roads:
    - Longmeadow Street (Route 5)/Forest Glen Road
    - Longmeadow Street (Route 5)/Converse Street
    - Converse Street at Laurel Street
    - Longmeadow Street (Route 5)/Bliss Drive
    - Converse Street at Dickinson Street
    - Along Longmeadow Street (Route 5)
  - Parsons Brinckerhoff recommended annual monitoring of 15 locations

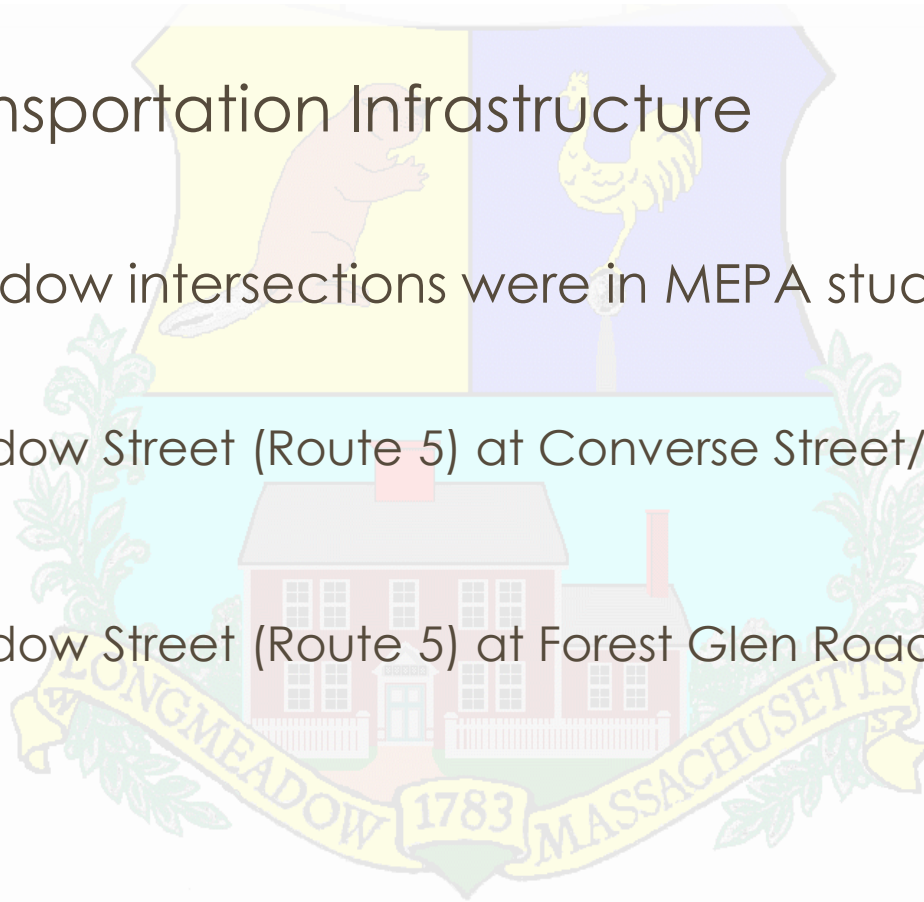
# LONGMEADOW

- Traffic/Transportation Infrastructure
- The GPI Study recommended monitoring for signalized locations along:
  - Longmeadow Street (Route 5)
  - Shaker Road
  - Dwight Road

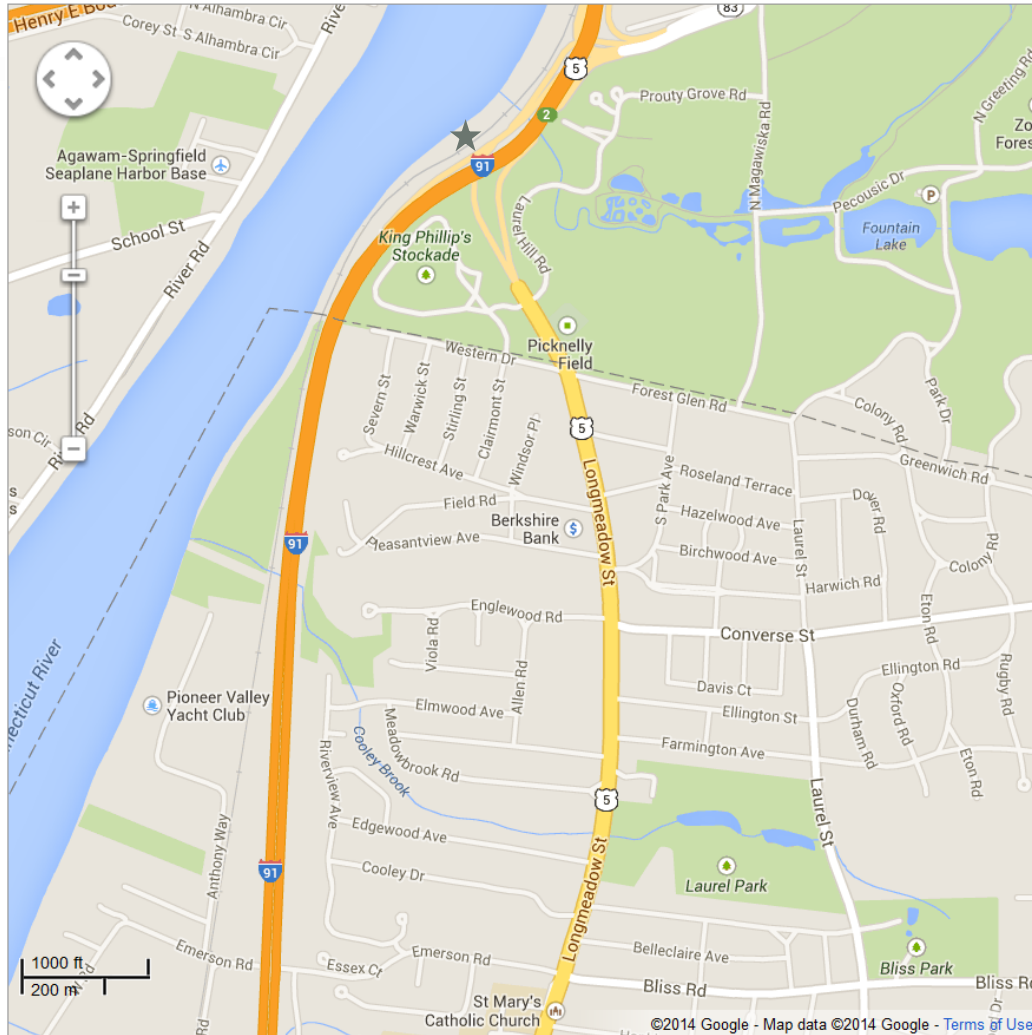
“as the most likely locations to experience impact as a result of the casino proposal”

# LONGMEADOW

- Traffic/Transportation Infrastructure
- 2 Longmeadow intersections were in MEPA study:
  - Longmeadow Street (Route 5) at Converse Street/Englewood Road
  - Longmeadow Street (Route 5) at Forest Glen Road



# LONGMEADOW



# LONGMEADOW



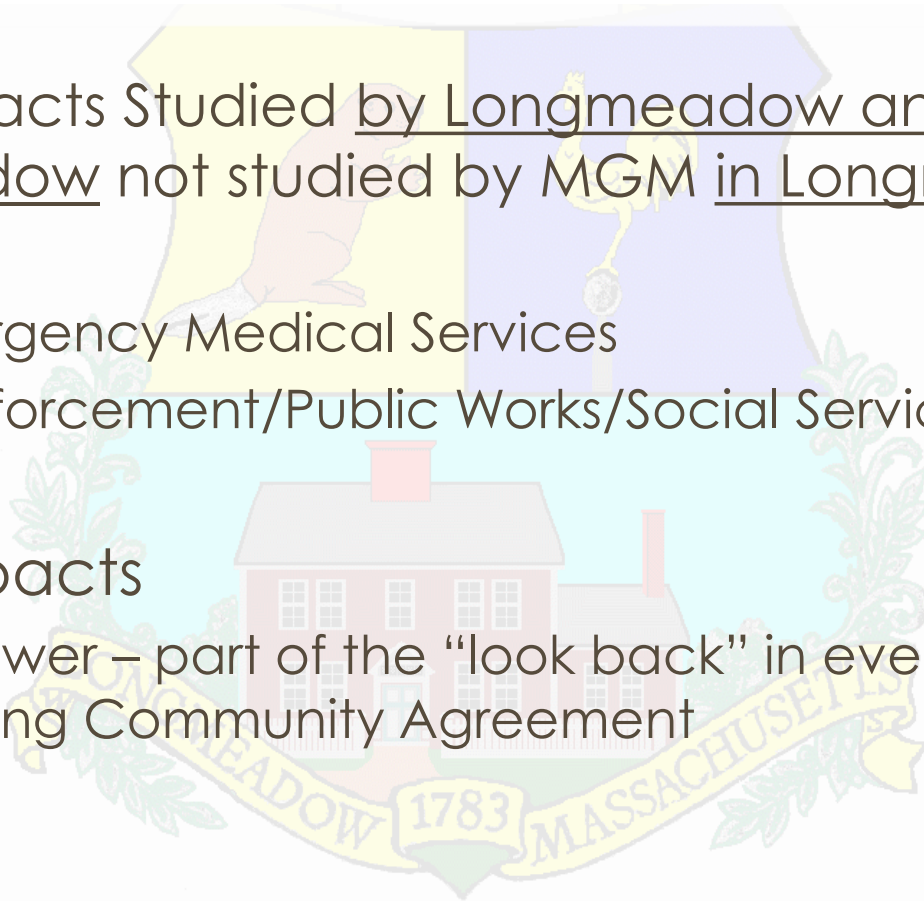
01.02.2014 | LONGMEADOW -- Massachusetts State Police direct southbound traffic on Rt. 91 up exit 1 and through Longmeadow Thursday morning due to a jack-knifed tractor trailer on Rt. 91 south in Longmeadow. Southbound cars were also turned around and directed to go back north in the southbound lane to exit 1. Those cars are visible at right.

Credit:

[http://www.masslive.com/news/index.ssf/2014/01/tractor\\_trailer\\_crash\\_prompts.html](http://www.masslive.com/news/index.ssf/2014/01/tractor_trailer_crash_prompts.html)

# LONGMEADOW

- Other Impacts Studied by Longmeadow and in Longmeadow not studied by MGM in Longmeadow:
  - Police
  - Fire/Emergency Medical Services
  - Code Enforcement/Public Works/Social Services
- Other Impacts
  - Water/Sewer – part of the “look back” in every MGM Surrounding Community Agreement



# LONGMEADOW

- Thank you for your time and consideration.
- Questions?
- Comments?

Michael C. Lehane, Katherine A. Hesse, and Brandon H. Moss  
Murphy, Hesse, Toomey & Lehane, LLP  
300 Crown Colony Drive, Suite 410  
Quincy, MA 02169  
Phone: (617) 479-5000  
Fax: (617) 479-6469

Stephen J. Crane, Town Manager  
Town of Longmeadow  
Town Hall  
20 Williams Street  
Longmeadow, MA 01106  
Phone: (413) 565-4110

