



MASHPEE WAMPANOAG TRIBE
WELCOMES THE MASSACHUSETTS GAMING COMMISSION

MARCH 15 • 2016





AGENDA

THE MASHPEE WAMPANOAG TRIBE

WORLD CLASS DEVELOPMENT TEAM

FIRST LIGHT RESORT AND CASINO

MASTER PLANNING AND PHASING

PROJECT BENEFITS

ENVIRONMENTAL

TRAFFIC

RESPONSIBLE GAMING

LITIGATION UPDATE

CONCLUSION



THE MASHPEE WAMPANOAG TRIBE

MASHPEE WAMPANOAG TRIBAL COUNCIL

Cedric Cromwell - Chairman

Jessie 'little doe' Baird - Vice Chairwoman

Marie Stone - Secretary

Robert Hendricks - Treasurer

Charles Foster - Council Member

Cheryl Frye- Cromwell - Council Member

Winona Pocknett - Council Member

Edwina Johnson – Graham - Council Member

Carlton Hendricks - Council Member

Robert Dias - Council Member

Yvonne Avant - Council Member

Vernon Lopez – Tribal Chief

Earl “Guy” Cash – Tribal Medicine Man



MASHPEE WAMPANOAG TRIBAL GAMING AUTHORITY

Cedric Cromwell - Gaming Authority President

Robert Hendricks - Gaming Authority Treasurer

Yvonne Avant – Gaming Authority Secretary

Daniel Nuey – Gaming Authority Board Member

Charles Foster - Gaming Authority Board Member

THE MASHPEE WAMPANOAG TRIBE

History:

- ❖ Archeological evidence and oral tradition show our presence in Massachusetts, including Taunton, for approximately 12,000 years
- ❖ Shared History between the Mashpee Wampanoag Tribe and the City of Taunton

Today:

- ❖ Federally recognized tribe with approximately 2,797 citizens
- ❖ Responsibility to provide government services to our citizens
- ❖ Goal of economic self-determination

Gaming:

- ❖ Gaming is envisioned as an economic development tool for federally recognized tribes.
- ❖ The Tribe now meets all of the requirements under IGRA as well as the Massachusetts Gaming Law to build First Light Resort and Casino



A STRONG COMMUNITY PARTNERSHIP

The City of Taunton and the Mashpee Wampanoag Tribe:

- ❖ Working cooperatively to produce a first class destination resort casino that will be a source of pride for the Tribe, City and Commonwealth of Massachusetts
- ❖ Has signed an Intergovernmental Agreement (IGA) with the City of Taunton which mitigates any impacts of the destination resort casino

Common Goals:

- ❖ Economic Development for the Tribe and Region
- ❖ Job creation
- ❖ Revenue for constituent services
- ❖ Commitment to public safety
- ❖ Promoting Taunton as a tourist destination
- ❖ Speed to market and Tribe as first mover



THE TRIBE'S IMMEDIATE BUSINESS GOALS

Build a First Class Destination Resort:

- ❖ Comprehensive, family-friendly concept
- ❖ Great centralized location and community partnership
- ❖ Responsible, sustainable development approach
- ❖ Maximum local job creation

Build a First Class Management Team:

- ❖ Genting: a World Class Experienced, successful partner
- ❖ Strong development and management expertise
- ❖ Executing the Mashpee Wampanoag Tribe's vision



THE MASHPEE WAMPANOAG TRIBE FEDERAL AND STATE REQUIREMENTS HAVE ALL BEEN MET

**Federal Recognition
FEBRUARY 2007**

Summary Under the Criteria and Evidence
for
Final Determination for Federal Acknowledgment
of the
Mashpee Wampanoag Indian Tribal Council, Inc.
Prepared in response to a petition submitted to the
Assistant Secretary - Indian Affairs for Federal
acknowledgment that this group exists as an Indian
tribe.
Approved: 2/15/07
James E. Casan
Associate Deputy Secretary

**TRIBAL-STATE COMPACT
BETWEEN
THE MASHPEE WAMPANOAG TRIBE
AND
THE COMMONWEALTH OF MASSACHUSETTS**
This compact is made and entered into on July 12, 2012 by and between the MASHPEE
WAMPANOAG TRIBE, a federally recognized Indian tribe ("Tribe") and the
COMMONWEALTH OF MASSACHUSETTS ("Commonwealth" or "State"), with respect to
the operation of Gaming on the Tribe's Indian lands pursuant to the Indian Gaming Regulatory
Act, as amended, and codified at 25 U.S.C. §§ 2701 to 2721, inclusive, and 18 U.S.C. §§ 1166 to
1168, inclusive.

**Massachusetts Compact
NOVEMBER 2013**

**Reservation
Proclamation
issued
by Department
of Interior
DECEMBER 2015**

**Land into
Trust
NOVEMBER
2015**

**Intergovernmental Agreement
MAY 2012**

INTERGOVERNMENTAL AGREEMENT
By and Between the Mashpee Wampanoag Tribe
and
the City of Taunton, Massachusetts
THIS AGREEMENT is made and entered into as of the 17th day of May, 2012, by and
between the Tribe, whose address is 483 Great Neck Road South, Mashpee, Massachusetts
02649, and the City, whose address is 141 Oak Street, Taunton, Massachusetts 02780. All
capitalized terms used herein shall have the meanings ascribed to them in Section 1, below.

**Voter Referendum
City of Taunton
63% Approval
MARCH 2012**

**Record of Decision
SEPTEMBER 2015**

RECORD OF DECISION
Trust Acquisition and Reservation Proclamation for 151 Acres in the City of Taunton,
Massachusetts, and 170 Acres in the Town of Mashpee, Massachusetts, for the Mashpee
Wampanoag Tribe
September 2015
Agency: Bureau of Indian Affairs
Action: Record of Decision (ROD) for the acquisition in trust and issuance of
a Reservation Proclamation for 170 acres +/- in the Town of Mashpee,
Massachusetts, and 151 acres +/- in the City of Taunton, Massachusetts,
by the Department of the Interior (Department) for the Mashpee
Wampanoag Tribe (Tribe) for gaming and other purposes.





WORLD CLASS DEVELOPMENT TEAM

WORLD CLASS TEAM - GENTING



THE DEVELOPER & MANAGER

- ❖ Genting Americas currently operates Resorts World Casino New York City in Queens New York and Resorts World Bimini Bahamas. RW Casino NYC generates an astonishing \$450 win per unit per day for 5,244 Video Lottery Terminals, the highest in United States. In 2016 GGR will exceed \$835m.
- ❖ In May 2015 Genting broke ground on the famous Las Vegas Strip where they are building a \$4B destination resort. It is scheduled to open in 2019.

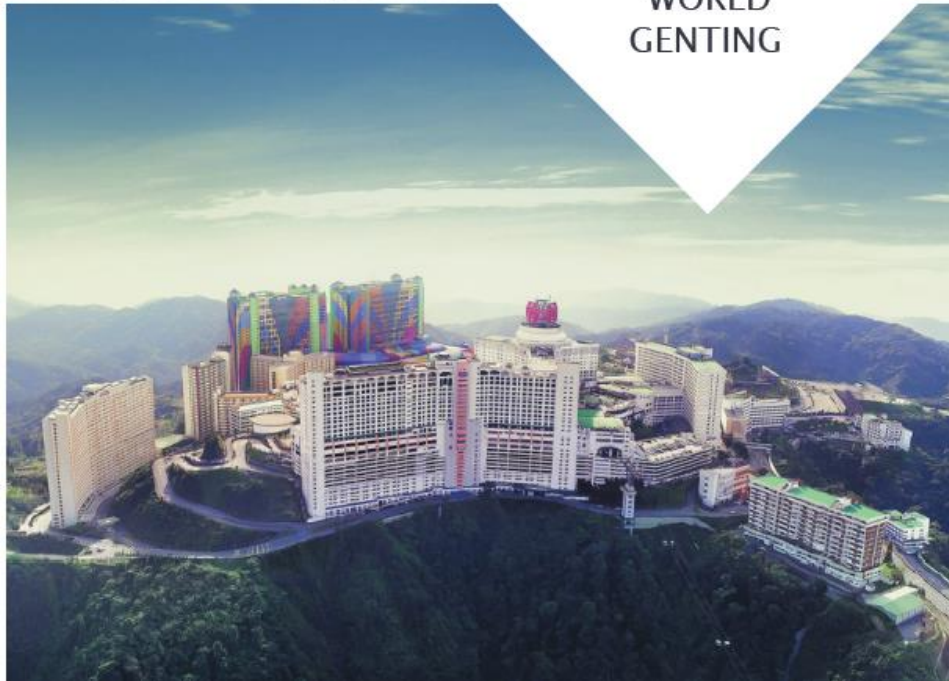


GLOBAL REACH OF GENTING



A Unique Resort in a Unique Setting

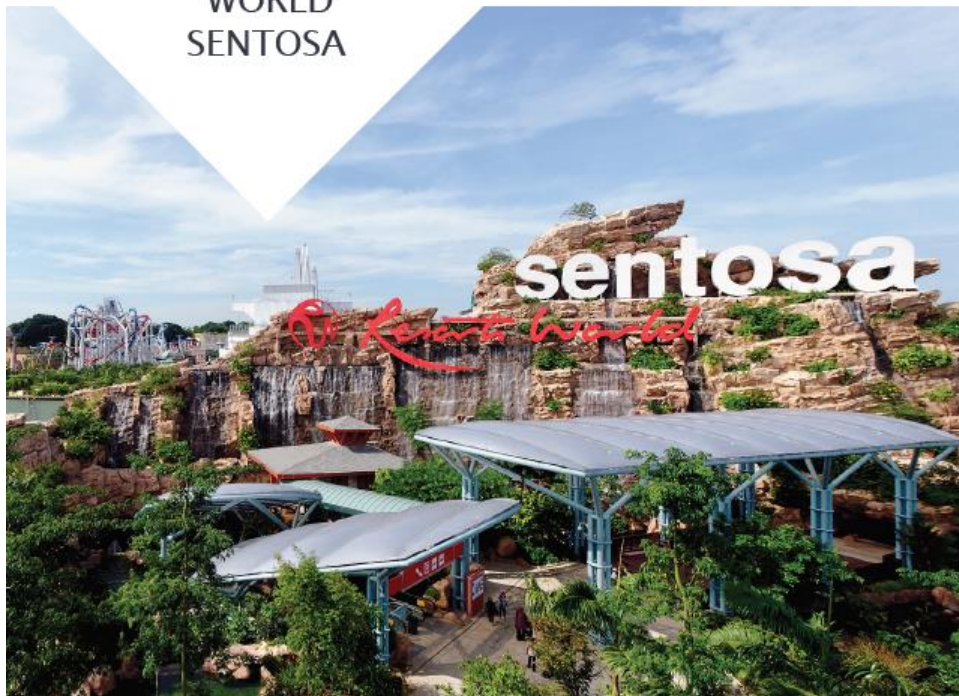
Resorts World Genting is a Multi-Billion Dollar Integrated Resort in the Malaysian Highlands



GLOBAL REACH OF GENTING



RESORTS
WORLD
SENTOSA



A Model Integrated Resort for the World

The USD 5 billion resort on the holiday island of Sentosa in Singapore has become the model others try to emulate



GLOBAL REACH OF GENTING



RESORTS
WORLD
MANILA



The Philippines' First Integrated Resort

A world class, multi-faceted entertainment destination with multiple hotels, retail offerings, and restaurants



GLOBAL REACH OF GENTING



Genting UK Operations

*Forty-seven unique casinos
across the country including the
new Resorts World Birmingham*



GLOBAL REACH OF GENTING



RESORTS
WORLD CASINO
NEW YORK CITY



New York City's Only
Casino

*Located just minutes from
JFK Airport and Manhattan,
RWNY broke the mold for
urban destination gaming*



GLOBAL REACH OF GENTING



WORLD CLASS TEAM - GENTING

- ❖ Publicly traded in 3 major stock exchanges
- ❖ Approximately \$45B in capitalization
- ❖ 50,000 employees worldwide
- ❖ Operating over 50 casinos worldwide
- ❖ 6 million member customer database
- ❖ Delivering 60 million customer visits each year



WORLD CLASS TEAM – STEELMAN PARTNERS

ARCHITECTURE, PLANNING & DESIGN

Steelman Partners™

- ❖ Based in Las Vegas, Nevada, Steelman Partners and its affiliates are award winning international design firms specializing in the multi-disciplinary facets of entertainment architecture, interior design, graphic design, planning, theater design, 3D design and lighting.
- ❖ Established in 1987, Steelman Partners has positioned ourselves as the premier touchstone in entertainment architecture and are well known within the gaming and hospitality industries. Comprised of the industry's most talented and acclaimed architects, designers, planners, and artists - Steelman Partners' professional services will come together to design a world class destination resort casino for the Mashpee Wampanoag Tribe



WORLD CLASS TEAM – DEDICATED CONSULTANTS

- ❖ RGB Architects - Owners Representative
- ❖ Howard/Stein-Hudson Associates - Traffic Studies
- ❖ Epsilon Associates Inc. - Environmental Studies
- ❖ Dimeo Construction Company – Pre-Construction Services
- ❖ Penta Building Group, LLC – Pre-Construction Services
- ❖ Talako Construction, LLC – Pre-Construction Services
- ❖ Fay, Spofford & Thorndike Inc. - Civil Engineering
- ❖ Kimley – Horn & Associates, Inc. – Civil Engineering
- ❖ AKRF Inc. – Socio-Economic
- ❖ Bank of America - Financial Advisors
- ❖ Sovereign Finance – Financial Advisors

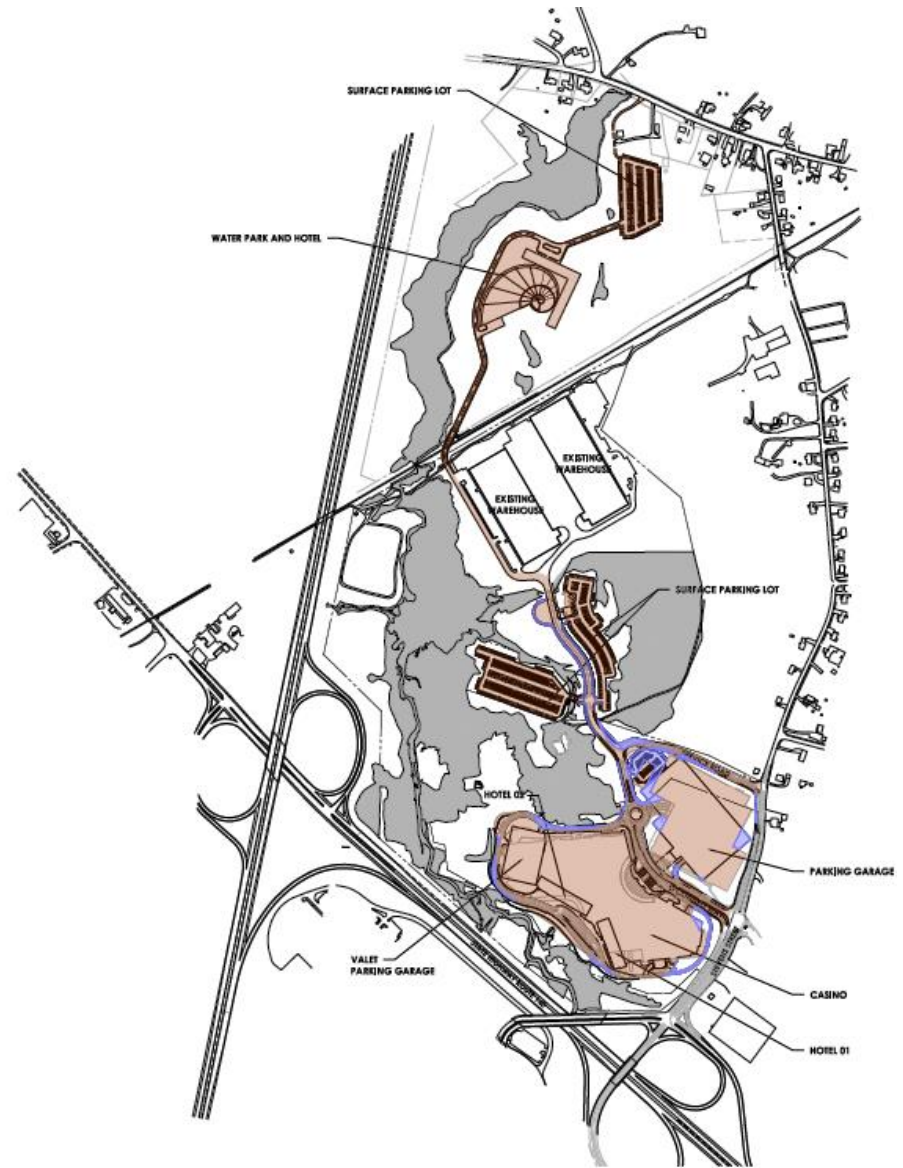




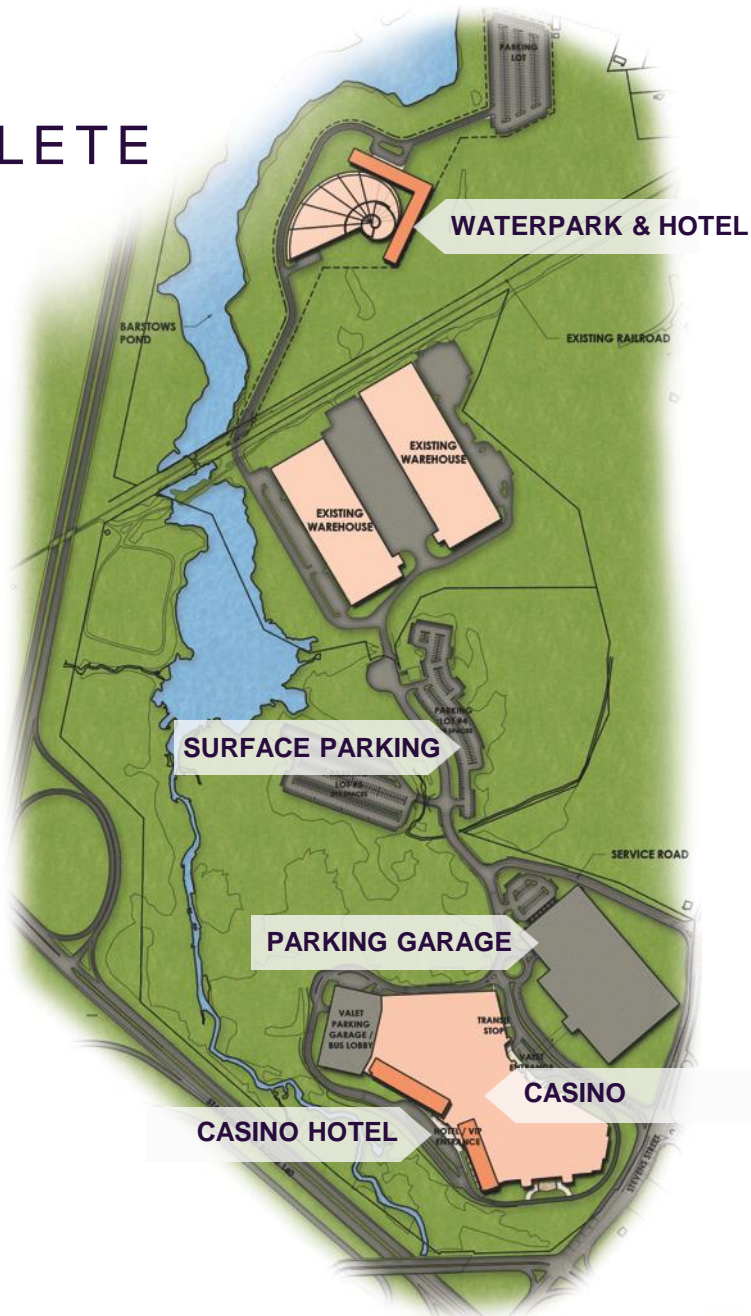
FIRST LIGHT RESORT AND CASINO

FIRST LIGHT RESORT AND CASINO - LOCATION

- ❖ First Light Resort Site and Casino is situated directly off Routes 24 and 140
- ❖ 38 miles from Boston
- ❖ 28 miles from Quincy
- ❖ 23 miles from New Bedford
- ❖ 17 miles from Fall River
- ❖ 20 miles from Providence



WHEN COMPLETE



A FIRST CLASS RESORT DESTINATION

CASINO

- ❖ 3,000 Slots
- ❖ 40 Poker Tables
- ❖ 150 Table Games

FINE DINING & ENTERTAINMENT VENUES

- ❖ Fine Dining Restaurants
- ❖ Food Court
- ❖ Center Bar with Stage
- ❖ Entertainment Lounge
- ❖ 24 Hour Café
- ❖ International Buffet
- ❖ Indoor Pool/Nightclub

HOTEL

- ❖ 900 Guest Rooms and Suites in Three, 15-Story Luxury Hotel Towers

RETAIL

- ❖ 9 Retail Stores

MEETING CENTER

- ❖ 31,000 SF Ballroom with Stage
- ❖ 5 Break-out Meeting Rooms

RECREATION

- ❖ Spa
- ❖ Water Park

PARKING

- ❖ 3,980 Parking Spaces in Garage
- ❖ 738 Surface Parking Spaces







CASINO



HOTELS





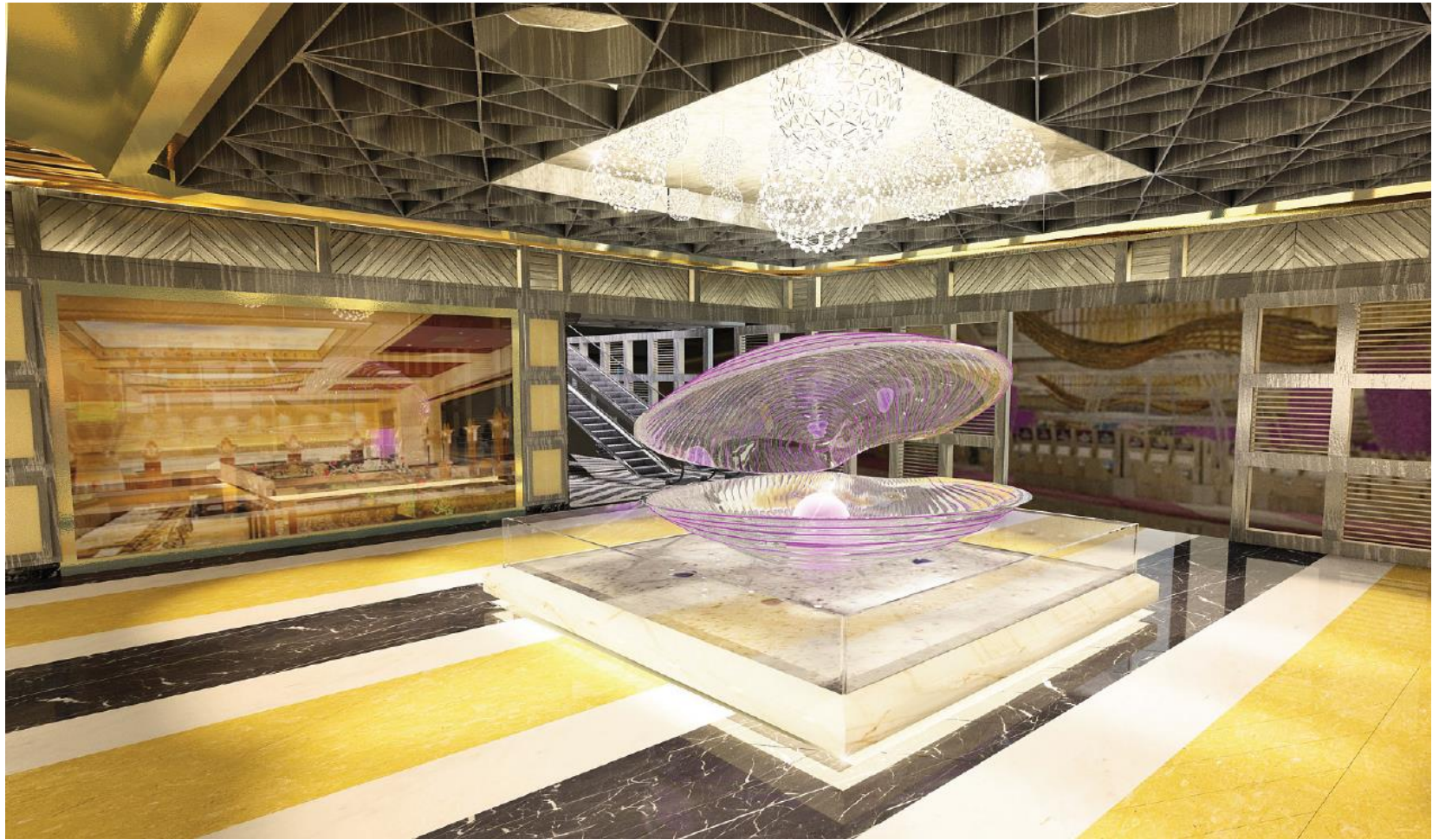
RESTAURANTS, LOUNGES & RETAIL AMENITIES



RESTAURANTS, LOUNGES & RETAIL AMENITIES

















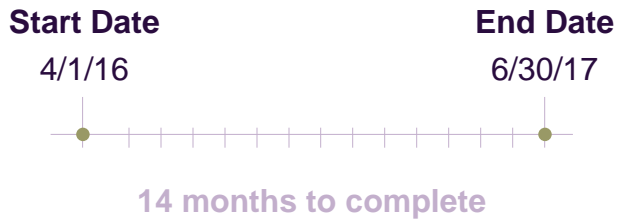






MASTER PLANNING AND PHASING

PHASE I – 14 MONTH CONSTRUCTION TIMELINE



CASINO

- ❖ 1,941 Slots
- ❖ 60 Table Games

FINE DINING & ENTERTAINMENT VENUES

- ❖ 165 Seat Steakhouse
- ❖ 275 Seat Food Court
- ❖ 50 Seat Noodle Bar
- ❖ VIP Lounge
- ❖ Entertainment Lounge

RETAIL

- ❖ Sundries Shop

PARKING

- ❖ 2,500 Surface Parking Spaces



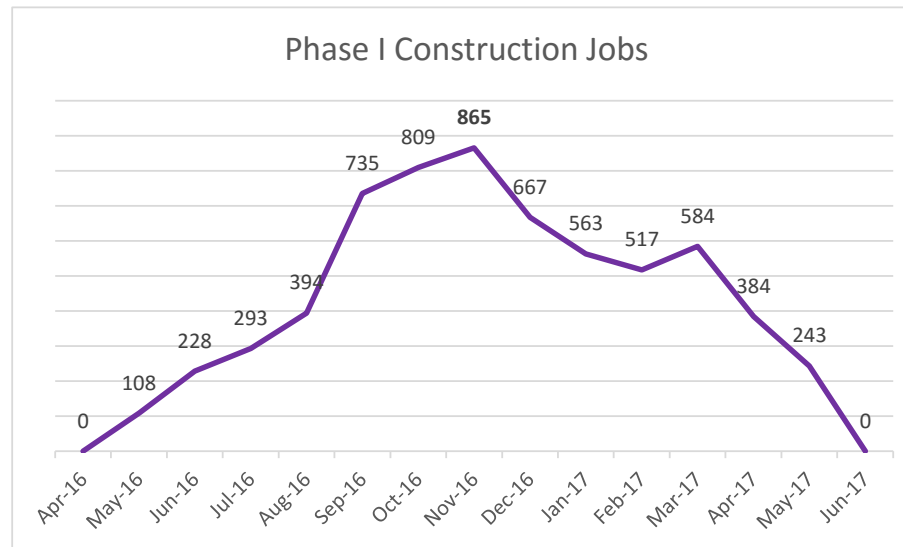
FAST-TRACKING BENEFITS BY PHASING





PROJECT BENEFITS

EMPLOYMENT-CONSTRUCTION



865 Total Construction Jobs – Phase I

- ❖ Tribe and Taunton Preference
- ❖ \$230 million in construction payroll over the duration of the project
- ❖ Long term construction employment as the facility will be completed in phases
- ❖ Project Labor Agreements (PLA) with the Unions under negotiation



EMPLOYMENT - PERMANENT JOBS

Direct Payroll Estimated at \$60 Million (1st Full Year of Operation)

- ❖ Good paying jobs: wages and benefits over \$50,000
- ❖ Job specific and customer service training will be provided
- ❖ Good Benefits: health insurance, meals, paid vacations
- ❖ Opportunity for a career not just a job

	Phase I	Phase II	Phase III	Phase IV
Administration	45	60	65	70
F&B	301	650	700	740
Finance	103	157	174	191
Hotel	-	105	205	308
IT	12	19	21	20
Marketing	114	130	150	160
Property Operations	113	201	235	265
Security and Surveillance	87	133	148	162
Slots	85	123	134	143
Table Games	386	569	620	657
TOTAL DIRECT RESORT JOBS	1,247	2,147	2,451	2,715
TOTAL LOCAL INDIRECT JOBS	1,060	2,040	2,378	2,634
TOTAL MASSACHUSETTS JOBS	2,306	4,186	4,829	5,349



OPERATIONAL PURCHASING

As with Employment, the purchasing of the tens of millions of dollars spent annually on goods and services required to operate, give the local and regional businesses the opportunity to participate

- ❖ Meat
- ❖ Seafood
- ❖ Produce
- ❖ Fruit
- ❖ Baked Goods
- ❖ Laundry Service
- ❖ Linen
- ❖ Paper Products





ENVIRONMENTAL

ENVIRONMENTAL – NEPA REVIEW

NEPA REVIEW COMPLETE



May 31, 2012	BIA Notice of Intent to prepare an EIS appears in the Federal Register
June 20, 2012	BIA holds Public scoping meeting at Taunton High School
July 2, 2012	Close of comment period (78 comment letters received)
November 2012	BIA makes the Scoping Report available
November 22, 2013	U.S. EPA publishes a Notice of Filing of the Draft EIS in the Federal Register
December 3, 2013	BIA holds public hearing on the DEIS
January 17, 2014	Close of extended comment period (44 comment letters received)
September 5, 2014	BIA publishes the NOA of the Final EIS in the Federal Register
October 6, 2014	Close of the 30-day waiting period
<u>September 2015</u>	<u>BIA issues the Record of Decision (ROD)</u>



ENVIRONMENTAL – MEPA REVIEW

MEPA REVIEW COMPLETE



- | | |
|-------------------------|---|
| July 2, 2012 | Tribe files Environmental Notification Form (ENF) |
| July 24, 2012 | MEPA holds public scoping meeting at Taunton High School |
| August 14, 2012 | Close of extended comment period
(53 letters, including 25 from members of the public) |
| August 24, 2012 | EEA Secretary issues Certificate on ENF |
| May 15, 2013 | Tribe files Draft Environmental Impact Report (DEIR) |
| July 12, 2013 | Close of extended comment period
(18 comment letters, including one from a member of the public) |
| July 19, 2013 | EEA Secretary issues Certificate on DEIR |
| December 1, 2014 | Tribe files Final Environmental Impact Report (FEIR) |
| January 9, 2015 | Close of comment period (eight comment letters
including one from a member of the public) |
| January 16, 2015 | EEA Secretary issues Certificate on FEIR |





TRAFFIC

INFRASTRUCTURE IMPROVEMENTS

LOCAL – CITY OF TAUNTON IMPROVEMENTS

- ❖ Geometric and Signal Upgrades, Pavement Markings, Signage at Stevens Street/140 NB/SB Ramps
- ❖ Geometric and Signal, Pavement Markings, Signage at Steven's Street/O'Connell Way
- ❖ New Access, Pavement Markings, Signage at Steven's Street/Service Road
- ❖ Widening of Stevens Street between Service Road and Route 140
- ❖ Emergency Vehicle Traffic Signal Pre-Emption System - 13 Intersections and Outfit 10 Vehicles
- ❖ High Street/Winthrop Street Signal Retiming | Highland Street/Winthrop Street Signal Retiming
- ❖ County Street/ Riverway Extension Signal Retiming
- ❖ Truck Exclusion Implementation - Stevens Street North of Service Road and Pinehill Street
- ❖ ADA improvements, Flashing Beacon, Radar Signage at Stevens Street/Middleboro Avenue
- ❖ ADA Improvements and Radar Signage at Stevens Street/Pinehill Street
- ❖ Flashing School Zone at Elementary School on Stevens Street
- ❖ Signalize Middleboro Street/Pinehill Street | Signalize Middleboro Street/Liberty Street
- ❖ Realignment and Flashing Warning Beacon at Hart Street/Poole Street/BP High Drive
- ❖ Post opening Traffic Monitoring



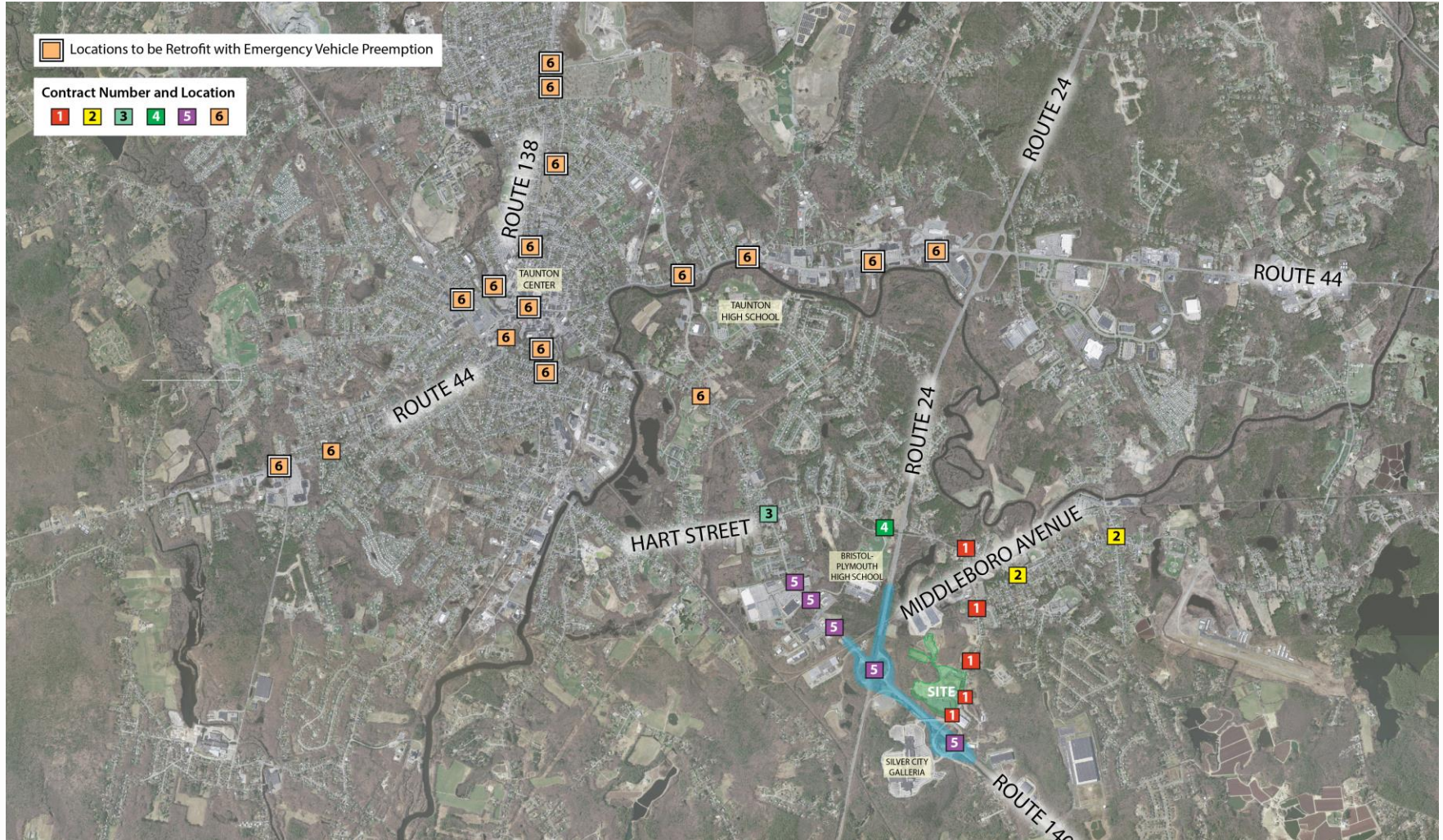
INFRASTRUCTURE IMPROVEMENTS

STATE – MASSDOT IMPROVEMENTS

- ❖ Geometric and Signal Upgrades, Pavement Markings, Signage at Stevens Street/140 NB/SB Ramps
- ❖ Widening of 140 SB right turn, Signal Retiming at Route 24 SB Ramp/140 Interchange - MassDOT Bottleneck Project
- ❖ New Slip Ramp Route 24 Southbound to Route 140 Northbound
- ❖ Geometric, Circulation, Signal, Signage and Pavement Marking Improvements at Route 24/140 NB & SB
- ❖ Signal Improvements and New Installation - Route 140 North of Route 24
- ❖ Post opening Traffic Monitoring
- ❖ Geometric and Signal Upgrades, Pavement Markings, Signage at Harts Four Corners



Improvement Locations



Harts Four Corners: EXISTING CONDITIONS



County Street

Hart Street



Not to scale.



Harts Four Corners: PROPOSED CONDITIONS



Middleboro Avenue and Pinehill Street: EXISTING CONDITIONS



Middleboro Avenue and Pinehill Street: PROPOSED CONDITIONS



Middleboro Avenue, Old Colony Avenue, and Liberty Street: EXISTING CONDITIONS



Middleboro Avenue, Old Colony Avenue, and Liberty Street: PROPOSED CONDITIONS



Stevens Street from Route 140 to Middleboro Avenue: EXISTING CONDITIONS



Stevens Street from Route 140 to Middleboro Avenue: PROPOSED CONDITIONS



Not to scale.



East Taunton Neighborhood Signage



Bristol-Plymouth Regional High School Driveway at Hart Street: EXISTING CONDITIONS



Bristol-Plymouth Regional High School Driveway at Hart Street: PROPOSED CONDITIONS



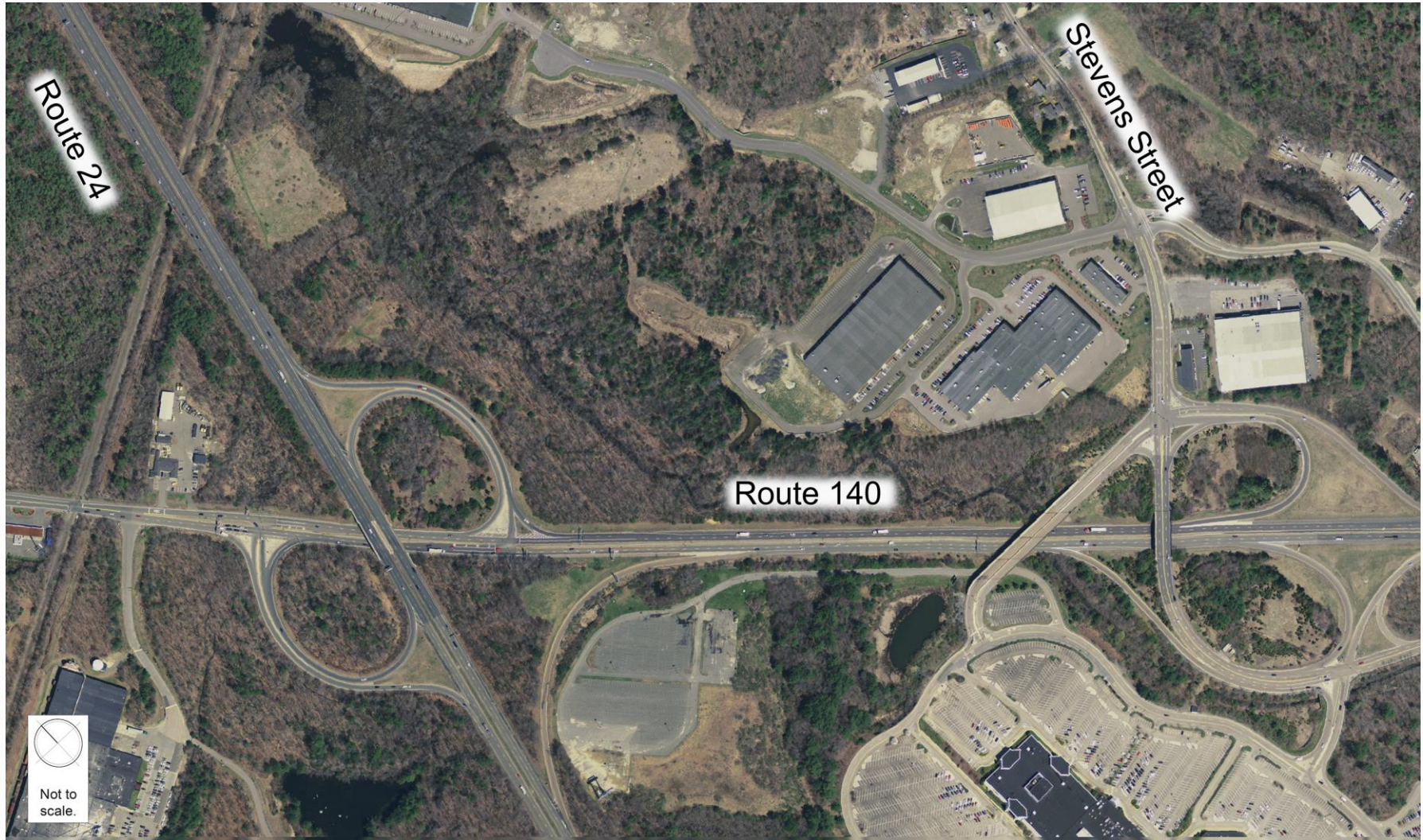
Bristol-Plymouth Regional High School Driveway at Route 140: EXISTING CONDITIONS



Bristol-Plymouth Regional High School Driveway at Route 140: PROPOSED CONDITIONS



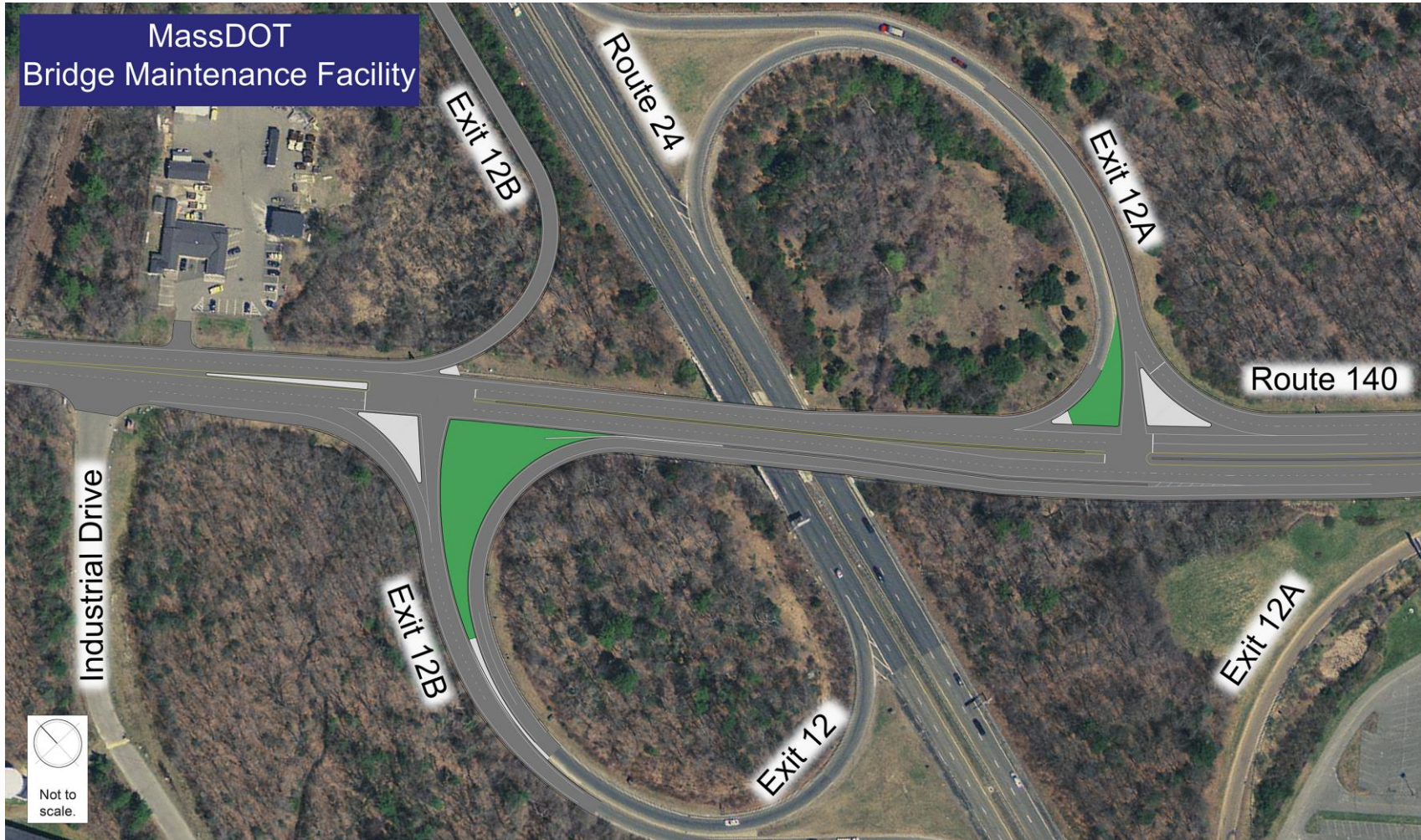
Route 140 and Route 24 Interchange: EXISTING CONDITIONS



Route 140 and Route 24 Interchange: EXISTING CONDITION



Route 140 and Route 24 Interchange: PROPOSED CONDITION



Route 140 and Stevens Street Interchange: EXISTING CONDITION



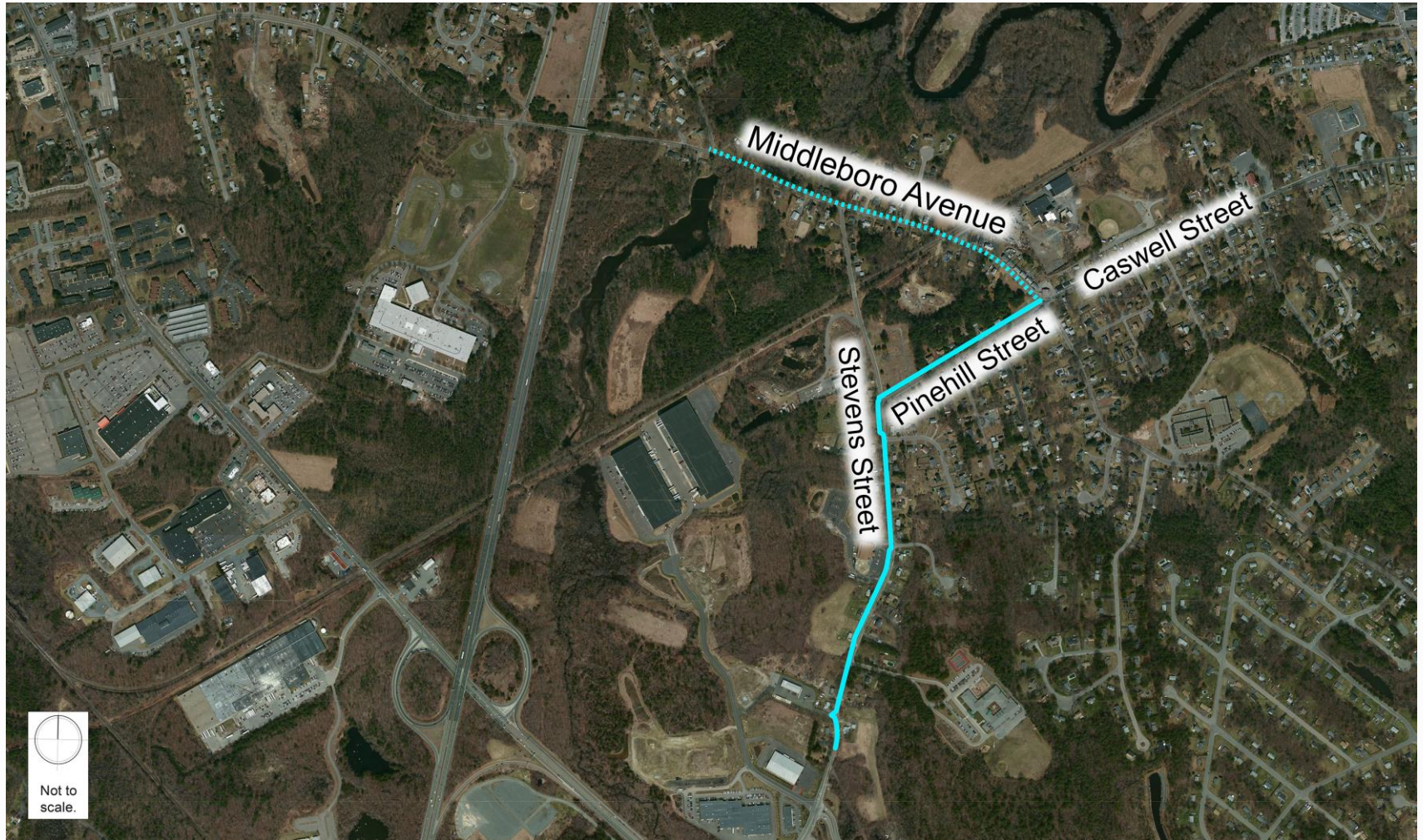
Route 140 and Stevens Street Interchange: PROPOSED CONDITION



Not to scale.



Water Main Upgrades





RESPONSIBLE GAMING

RESPONSIBLE GAMING



As part of its requirement under the Compact, The Mashpee Wampanoag Tribal is committed to developing and implementing a very robust problem gaming initiative.

Most specifically:

- ❖ Making ongoing financial contributions, as specifically detailed in the Compact, to the State sanctioned collaborative effort on Problem Gambling and the National Council on Problem Gambling
- ❖ Educating its employees about problem and underage gambling and instituting a comprehensive training and education program to assist all employees in identifying problem gamblers
- ❖ Creating and maintaining a public awareness campaign for support resources
- ❖ Encouraging those who have a problem to obtain help and to support specialized services that address the problem
- ❖ Promoting and making available self-limitation and Self-Exclusion Options





LITIGATION UPDATE



IN SUMMARY

SUMMARY

- ❖ The Mashpee Wampanoag Tribe is a Federally Recognized Tribe with Reservation Land in Trust and a Compact with the Commonwealth of Massachusetts which entitles the Tribe to build and operate a casino under IGRA.

SUMMARY

- ❖ The Tribe's World Class Team of Developers, Consultants and Managers are in place and actively working to ensure the long-term vision and business goals of the Mashpee Wampanoag Tribe are executed

SUMMARY

- ❖ The design and plans are 100% complete. Construction documents are also 100% complete. Ground breaking is scheduled to take place next month - April 2016

SUMMARY

- ❖ First Light Resort and Casino provides the best opportunity to recapture gaming revenues that is leaving the Commonwealth of Massachusetts for other casino destinations

SUMMARY

- ❖ The Tribe is committed to its regulatory obligations under the compact in full cooperation with the Massachusetts Gaming Commission as it has done since the Land in Trust decision.



THANK YOU

