

MGM Springfield

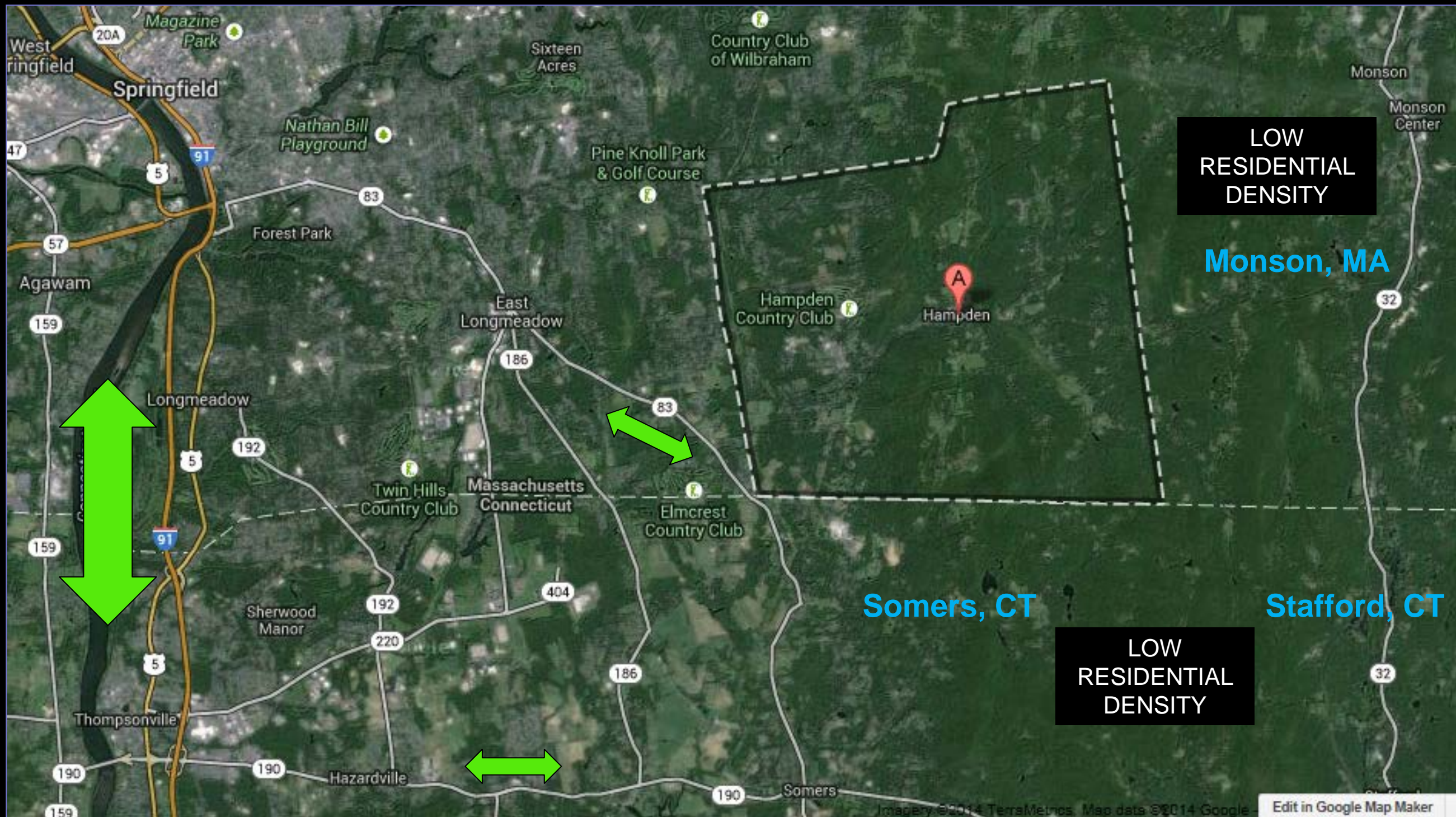


Technical Response to
Hampden's
Petition for Surrounding
Community Designation



January 28, 2014

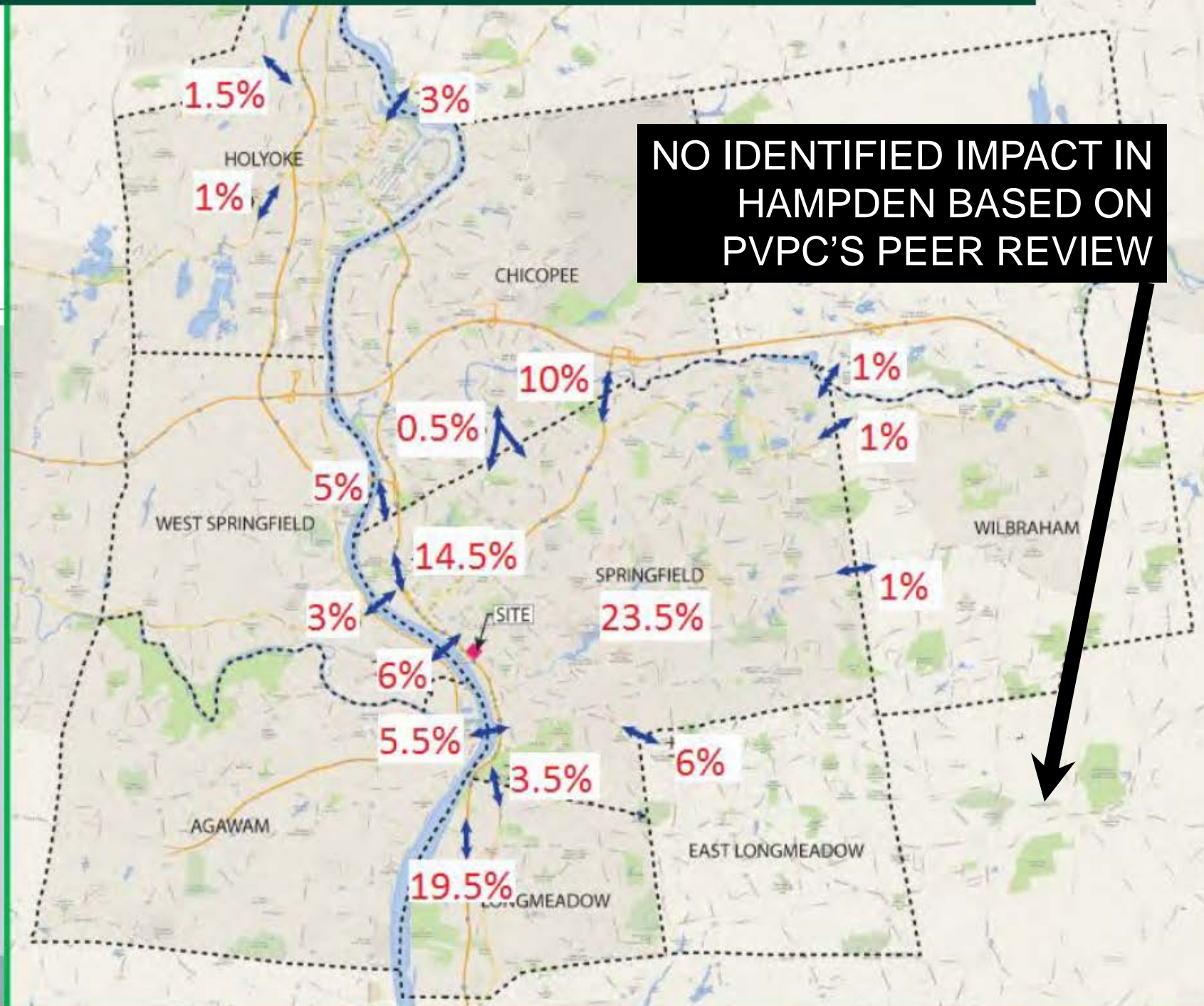
Travel Routes near Hampden



Local Trip Distribution – by Percentage From GPI Peer Review

Review Summary – GPI % Trips to Neighboring Communities

GPI



Traffic Engineering Conclusions:

- There are no state routes or logical cut-through route in Hampden
- The closest corner of Hampden is >5 miles away
- There is very little residential density to draw trips from in South Monson and the northern CT towns
- Data-driven and quantitative analysis by TEC indicates no perceivable traffic impact in Hampden
- MGM Springfield will result in less than 12 trips on Allen Street during the Friday peak period (6 in / 6 out)
- **Hampden will not experience any significant and adverse impact to its transportation infrastructure**