



Meeting Minutes

Date/Time: January 8, 2015 – 10:30 a.m.

Place: Boston Convention and Exhibition Center
415 Summer Street, Room 107B
Boston, Massachusetts

Present: Chairman Stephen P. Crosby
Commissioner Gayle Cameron
Commissioner James F. McHugh
Commissioner Bruce Stebbins
Commissioner Enrique Zuniga

Call to Order

See transcript page 2

10:30 a.m. Chairman Crosby called to order the 142nd Commission Meeting.

Approval of the Minutes

See transcript page 2

10:30 a.m. *Commissioner McHugh moved for the approval of the December 18, 2014 minutes. Motion seconded by Commissioner Zuniga. Motion passed unanimously. Commissioner Stebbins was absent.*

Administration

See transcript pages 3-107

10:31 a.m. Director Day presented the Commission with an administrative update regarding staffing, vendor licensing, and racing staffing and licensing.

10:36 a.m. CFAO Derek Lennon, CIO John Glennon, Deputy Director of Investigations and Enforcement Bureau Bruce Band, Financial Investigator Vanessa Orso, and Jackie Mancini and Matt Cedor from GTECH presented an update on the Central Management proposal and the preferred RFR response.

- 11:53 a.m. Commission took a brief recess.
- 12:01 p.m. Meeting resumed.
- 12:01 p.m. Central Management System update continued with comments from Jed Nosal, counsel for MGM; Marty Natasia from Brown Rudnick, consultant to MGM; and Matt Cedor from GTECH.
- 12:22 p.m. CIO John Glennon presented an update on the Gaming Technology Laboratory.

Investigations and Enforcement Bureau

See transcript pages 107- 115

- 12:37 p.m. Director Wells presented a region C update
- 12:40 p.m. Director Wells presented a request for a temporary Key Gaming Employee executive licenses to Seth Stratton with MGM, and a temporary Key Gaming Employee standard license for Mary Katherine Murren with MGM.
- 12:43 p.m. *Motion made by Commissioner Stebbins that the Commission issue a temporary Key Gaming Employee executive license to Seth Stratton and a Key Gaming Employee standard license to Mary Katherine Murren. Motion seconded by Commissioner Cameron. Motion passed unanimously.*

Research and Problem Gaming

See transcript pages 115- 124

- 12:44 p.m. Director Vander Linden presented the final draft of the Play Management RGF policy and gave an update regarding ATM locations at gaming establishments.
- 12:54 p.m. *Having no further business, a motion to adjourn was made by Commissioner Cameron. Motion passed unanimously.*



List of Documents and Other Items Used

1. Massachusetts Gaming Commission January 8, 2015 Notice of Meeting and Agenda.
2. Massachusetts Gaming Commission December 18, 2014 Meeting Minutes.
3. Massachusetts Gaming Commission presentation on Central Management/Monitoring System (CMS)
4. Massachusetts Gaming Commission Gaming Technology Laboratory- Status Update

5. Massachusetts Gaming Commission January 8, 2015 memorandum regarding Play Management recommendation.
6. Massachusetts Gaming Commission August 8, 2014 memorandum regarding ATMs at a gaming establishment.

/s/ Catherine Blue
Catherine Blue
Assistant Secretary

DRAFT



January 15, 2015

Massachusetts Gaming Commission
101 Federal St.,
23rd Floor
Boston, MA 02110

Dear Commissioners:

Enclosed please find two new renderings of the proposed Wynn Resort in Everett.

The Wynn Resort in Everett has been modified to more closely resemble the Wynn "Signature" resort in Las Vegas as a graceful, curved bronze glass tower with cream colored banding and the distinctive swooping top. The number of rooms has been increased to 629, and we have adjusted the number of suites to match the anticipated market, including two duplex end suites overlooking the Mystic River and dramatic Boston skyline.

We look forward to presenting more detail regarding the new design to the Commission at the upcoming meeting.

Regards,

A handwritten signature in cursive script that reads "Jacquie Krum".

Jacqui Krum
Senior Vice President and General Counsel,
Wynn Resorts Development

cc: Rick Day, Executive Director
John Ziemba, Ombudsman

Wynn.[®]
EVERETT



Wynn



Wynn.[®]
EVERETT



**Monitoring of
Project Construction
and
Licensee Requirements
205 CMR 135**

**Quarterly Report
as of
December 31, 2014**





Monitoring of Project Construction and Licensee Requirements Quarterly Report as of 12-31-14

Table of Contents

Project Schedules and Reporting	205 CMR 135.2 Reference	Appendix Reference
Updated Guidelines	1	1
Project Schedule	2(a)(c).....	2
Affirmative Action Program	3	3
Project Schedule Changes (if applicable)	4	4
Quarterly Status Report		
Cost of Construction	5(a)	5
Capitalization of Gaming License	5(b)	5
Design & Construction Contracts	5(c)	6
Status of Work Completed	5(d)	7
Work Force Statistics	5(e)	8
Minority Contracts	5(f)	9
Permits	6	10
Organized Labor Letter	7	11
Operational Affirmative Action Plan.....	8	12

APPENDIX 1

Plainridge Park Casino Quarterly Report to MGC Updated Guidelines As of December 31, 2014

Reference 205 CMR 135.02 – (1)

Updates received during the quarter ended December 31, 2014 are as follows:

- 205 CMR 122: DRAFT Amendments – Capital Investments
(Public Hearing Held October 7, 2014)
- 205 CMR 134: EMERGENCY Amendments – Licensing and Registration
(Amendments passed by emergency November 20, 2014)
- 205 CMR 149: EMERGENCY - Race Horse Development Fund
(Enacted by emergency November 20, 2014)

Received draft / comment period open for the following:

- 205 CMR 14: EMERGENCY - Supplemental Licensure Procedures
(Comment period ends January 19, 2015)
- 205 CMR 134: EMERGENCY Amendments – Licensing and Registration
(Comment period ends January 19, 2015)
- 205 CMR 138: DRAFT - Uniform Standards of Accounting Procedures and Internal Controls
(Comment period ends January 19, 2015)
- 205 CMR 146: DRAFT - Gaming Equipment
(Comment period ends January 9, 2015)
- 205 CMR 149: EMERGENCY - Race Horse Development Fund
(Comment period ends January 19, 2015)

APPENDIX 2

Plainridge Park Casino Quarterly Report to MGC Project Schedule As of December 31, 2014

Reference 205 CMR 135.02 – (2)(a)(c)

Construction Activities

- Project schedule (two pages attached) was approved by MGC during meeting of July 10, 2014. The project is still on track for a June 2015 completion.
- Current construction progress schedule update included in Appendix 4.

Non-Construction Activities

- Also attached is the Plainridge Park Casino Non-Construction Activities Schedule updated January 14, 2015. Various items identified on the schedule are under evaluation. SG&R and MGC are currently in communication to get dates in line with current activities.



**PENN NATIONAL
GAMING, INC.**

PLAINRIDGE PARK CASINO NON-CONSTRUCTION ACTIVITY PROJECT SCHEDULE
EXTERNAL INTERFACES

Activity ID	Activity Name	Rem. Dur.	%	Start	Finish	Total Float
Plainridge Park Casino Project Schedule - DD-05.16.14		584		03-Mar-14 A	12-Sep-16	0
Non-Construction Activity Schedule (Activities)		584		03-Mar-14 A	12-Sep-16	0
SG&R Procurement		395		03-Mar-14 A	10-Dec-15	189
PPC-NON/CONSTR-0020	SG&R - Provide Plans For Contracting With Local Business Owners (Statute Check List # 8)	11	0%	03-Mar-14 A	02-Jun-14	573
PPC-NON/CONSTR-0310	SG&R - Slot Machine Procurement & Manufacturing	102	0%	01-Oct-14*	27-Feb-15	0
PPC-NON/CONSTR-0410	SG&R - Slot Machine Delivery & Installation	41	0%	01-Apr-15*	29-May-15	0
PPC-NON/CONSTR-0040	SG&R - Design & Construct To LEED Gold Certification	0	0%		03-Jul-15	189
PPC-NON/CONSTR-0050	SG&R - Apply To USGBC For LEED Gold Certification	30	0%	06-Jul-15	14-Aug-15	189
PPC-NON/CONSTR-0030	SG&R - Provide LEED Certification To MGC (Statute Check-List # 12)	80	0%	17-Aug-15	10-Dec-15	189
Hosting & Surroundings Communities		584		03-Mar-14 A	12-Sep-16	0
PPC-NON/CONSTR-0080	SG&R - Identify Infrastructure Costs + Commit To Mitigation Plan (Statute C.L. # 23)	83	0%	03-Mar-14 A	12-Sep-14	196
PPC-NON/CONSTR-0090	SG&R - Implement Measures To Address Problem Gaming (Statute C.L. # 23)	251	0%	03-Mar-14 A	15-May-15	333
PPC-NON/CONSTR-0100	SG&R - Conduct Baseline Studies (License # 9 Other)	63	0%	02-Mar-15*	29-May-15	0
PPC-NON/CONSTR-0110	SG&R - Traffic Related Baseline Studies (RFA # 2)	63	0%	02-Mar-15	29-May-15	324
PPC-NON/CONSTR-0120	SG&R - Conduct Job/airs (SCA Foxboro, Mansfield, North Attleboro, Wrentham)	409	0%	03-Mar-14 A	31-Dec-15	175
PPC-NON/CONSTR-0370	SG&R - Monitor & Assess Initial Impacts To Community (Starting Post Opening Day)	254	0%	06-Jul-15	08-Jul-16	0
PPC-NON/CONSTR-0380	SG&R - Prepare Initial Reports On Post Opening Monitoring	45	0%	11-Jul-16	12-Sep-16	0
Regulatory Approvals		260		03-Mar-14 A	29-May-15	324
PPC-NON/CONSTR-0350	MGC - Approve Mass. Community College Training Plans (License # 12)	0	0%		15-Jul-14*	0
PPC-NON/CONSTR-0150	MGC - Finalize & Approve Gaming Office Requirements (RFA # 2)	51	0%	19-Jun-14*	29-Aug-14	0
PPC-NON/CONSTR-0260	SG&R - Submit Exterior Design Plans For MGC Approval (FDC # 9)	34	0%	15-Jul-14*	29-Aug-14	0
PPC-NON/CONSTR-0270	SG&R - Submit Floor Plan For MGC Approval (FDC # 9)	34	0%	15-Jul-14*	29-Aug-14	0
PPC-NON/CONSTR-0400	SG&R - Submit Required Approvals List & MGC Approval (Summary Item # 25)	33	0%	16-Jul-14*	29-Aug-14	0
PPC-NON/CONSTR-0170	MGC - Develop & Issue Surveillance System Specifications	88	0%	03-Mar-14 A	19-Sep-14	458
PPC-NON/CONSTR-0240	MGC - Issue Free Play Standards (License # 26)	65	0%	19-Jun-14*	19-Sep-14	0
PPC-NON/CONSTR-0290	MGC - Issue State Slot Monitoring System Requirements	65	0%	19-Jun-14*	19-Sep-14	0
PPC-NON/CONSTR-0010	MGC - Provide Regulation / Full Descriptions Of Internal Controls (Statute Check-List # 4)	95	0%	03-Mar-14 A	30-Sep-14	406
PPC-NON/CONSTR-0280	MGC - Approve Slot Machine Requirements	64	0%	01-Jul-14*	30-Sep-14	0
PPC-NON/CONSTR-0320	MGC - License Slot Machine Vendors	64	0%	01-Jul-14*	30-Sep-14	0
PPC-NON/CONSTR-0200	SG&R - Submit Slot Monitoring System For MGC Approval	20	0%	19-Sep-14*	17-Oct-14	0
PPC-NON/CONSTR-0180	SG&R - Submit Surveillance System Plan For MGC Approval (RFA C.L. # 5 & 6)	38	0%	22-Sep-14	14-Nov-14	458
PPC-NON/CONSTR-0060	SG&R - File & Submit Internal Controls To MGC	51	0%	01-Oct-14	15-Dec-14	406
PPC-NON/CONSTR-0160	MGC - Approve Internal Controls	32	0%	16-Dec-14	30-Jan-15	406
PPC-NON/CONSTR-0220	SG&R - Submit Slot Machine Testing Program For MGC Approval	22	0%	15-Jan-15*	13-Feb-15	0
PPC-NON/CONSTR-0390	SG&R - Submit "12.15.14" Bank Secrecy Act Plan To MGC For Approval "02.27.15"	52	0%	15-Dec-14*	27-Feb-15	0
PPC-NON/CONSTR-0140	MGC - Develop & Provide On Site Requirements For Inspection For Pre-Opening Activities (RF...	22	0%	02-Mar-15*	31-Mar-15	0
PPC-NON/CONSTR-0070	SG&R - Submit Responsible Gaming Plan & MGC Approval (FDC # 20)	251	0%	03-Mar-14 A	15-May-15	333
PPC-NON/CONSTR-0130	MGC - Develop & Provide Process & Road Map Requirements For On-Site Operating License I...	260	6.81%	03-Mar-14 A	29-May-15	324
PPC-NON/CONSTR-0190	MGC - On-Site Review & Approval Process Of Surveillance System	54	0%	13-Mar-15*	29-May-15	0
PPC-NON/CONSTR-0230	MGC - Test & Approve Slot Monitoring System	41	0%	01-Apr-15*	29-May-15	0
Other Requirements		130		17-Oct-14	27-Apr-15	0
PPC-NON/CONSTR-0330	SG&R - Execute Amended Lottery Agreement (License # 10)	0	0%		17-Oct-14*	0
PPC-NON/CONSTR-0340	SG&R - Submit Plan Regarding Mass. Office Of Travel & Tourism (License #23)	0	0%		13-Feb-15*	0
PPC-NON/CONSTR-0360	SG&R - Apply For Or Amend Existing & Obtain Alcoholic Beverage License	70	0%	16-Jan-15*	27-Apr-15	0

Plainridge Park Casino - Non-Construction Activities Schedule

Updated: 1/14/2015

Activity ID	Activity Name	%	Start	Finish	Total Float
MGC Contractor Form					
PPC-EVENT1-OP-0050	SG&R Carpet Vendors MGC Form Completion and Signoff - Crossley	100%	05-Nov-14 A	10-Dec-14 A	
PPC-EVENT1-OP-0060	SG&R Lighting Vendors MGC Form Completion and Signoff - Arts Anvil	100%	05-Nov-14 A	10-Dec-14 A	
PPC-EVENT1-OP-0010	* SG&R Carpet Vendors MGC Form Completion and Signoff	60%	05-Nov-14 A	9-Jan-15	0
PPC-EVENT1-OP-0020	* SG&R Wallcovering Vendors MGC Form Completion and Signoff	60%	05-Nov-14 A	9-Jan-15	5
PPC-EVENT1-OP-0030	* SG&R Lighting Vendors MGC Form Completion and Signoff	60%	05-Nov-14 A	9-Jan-15	10
PPC-EVENT1-OP-0040	* SG&R Signage Vendors MGC Form Completion and Signoff	60%	05-Nov-14 A	9-Jan-15	4
SG&R Procurement					
SG&R - General Procurement and Delivery					
PPC-NON/CONSTR-0020	SG&R - Provide Plans For Contracting With Local Business Owners (Statute Check-List # 8)	100%	03-Mar-14 A	02-Jun-14 A	
PPC-NON/CONSTR-0210	SG&R - Provide Names of All Proposed Vendors of Gaming Equipment	100%	03-Mar-14 A	22-Sep-14 A	
PPC-NON/CONSTR-0250	SG&R - Surveillance Installation	0%	2-Feb-15	16-Mar-15	1
PPC-NON/CONSTR-0040	SG&R - Design & Construct To LEED Gold Certification	0%		30-Jun-15	144
PPC-NON/CONSTR-0050	SG&R - Apply To USGBC For LEED Gold Certification	0%	1-Jul-15	11-Aug-15	144
PPC-NON/CONSTR-0030	SG&R - Provide LEED Certification To MGC (Statute Check-List # 12)	0%	12-Aug-15	4-Feb-16	144
SG&R - Slot Machines Procurement and Delivery					
PPC-NON/CONSTR-0305	SG&R - Activate Security Cameras (Gaming Floor / Lobby Area) (6dc)	0%	7-Mar-15	24-Mar-15	24
PPC-NON/CONSTR-0310	* SG&R - Slot Machine Procurement & Manufacturing	20.27%	26-Jan-15	1-Apr-15	13
PPC-NON/CONSTR-0315	SG&R - Deliver & Install Slot Machine Bases (7dc)	0%	4-Apr-15	4-May-15	17
PPC-NON/CONSTR-0410	SG&R - Slot Machine Delivery & Installation	0%	24-Apr-15	5-Jun-15	0
PPC-NON/CONSTR-0415	SG&R - Slot Machine Start-Up & Check-Out	0%	28-Apr-15	9-Jun-15	0
PPC-NON/CONSTR-0425	SG&R/MGC - Slot Machine Certification	0%	10-Jun-15	23-Jun-15	0
Host & Surrounding Communities					
PPC-NON/CONSTR-0080	SG&R - Identify Infrastructure Costs + Commit To Mitigation Plan (Statute C.L. # 23) - Released Marois	100%	03-Mar-14 A	12-Nov-14 A	
PPC-NON/CONSTR-0120	SG&R - Conduct Jobfairs (SCA Foxboro, Mansfield, North Attleboro, Wrentham)	75%	03-Mar-14 A	26-Jun-15	
PPC-NON/CONSTR-0090	SG&R - Implement Measures To Address Problem Gaming (Statute C.L. # 23)	0%	16-Apr-15	15-May-15	26
PPC-NON/CONSTR-0100	SG&R - Conduct Baseline Studies (License # 9 Other)	0%	31-Mar-15	29-Jun-15	-1
PPC-NON/CONSTR-0110	SG&R - Traffic Related Baseline Studies (RFA # 2)	0%	31-Mar-15	29-Jun-15	-1
PPC-NON/CONSTR-0370	SG&R - Monitor & Assess Initial Impacts To Community (Starting Post Opening Day)	0%	1-Jul-15	5-Jul-16	0
PPC-NON/CONSTR-0380	SG&R - Prepare Initial Reports On Post Opening Monitoring	0%	6-Jul-16	30-Aug-16	0
Regulatory Approvals					
SG&R					
PPC-NON/CONSTR-0260	SG&R - Submit Exterior Design Plans For MGC Approval (FDC # 9)	100%	28-May-14 A	18-Jul-14 A	
PPC-NON/CONSTR-0270	SG&R - Submit Floor Plan For MGC Approval (FDC # 9)	100%	01-Jul-14 A	07-Aug-14 A	
PPC-NON/CONSTR-0400	SG&R - Submit Required Approvals List & MGC Approval (Summary Item # 25)	100%	03-Mar-14 A	29-Aug-14 A	
PPC-NON/CONSTR-0180	* SG&R - Submit Surveillance System Plan For MGC Approval (RFA C.L. # 5 & 6)	100%	22-Sep-14 A	31-Dec-14 A	
PPC-NON/CONSTR-0390	* SG&R - Submit "12.15.14" Bank Secrecy Act Plan To MGC For Approval "02.27.15"	85.71%	01-Oct-14 A	15-Jan-15	110
PPC-NON/CONSTR-0060	* SG&R - File & Submit Internal Controls To MGC	88.24%	01-Oct-14 A	15-Jan-15	78
PPC-NON/CONSTR-0070	SG&R - Submit Responsible Gaming Plan (FDC # 20)	40%	03-Mar-14 A	2-Feb-15	26
PPC-NON/CONSTR-0200	SG&R - Submit Slot Monitoring System For MGC Approval	40%	22-Sep-14 A	2-Feb-15	27
PPC-NON/CONSTR-0220	SG&R - Submit Slot Machine Testing Program For MGC Approval	0%	01-Oct-14 A	2-Mar-15	17
MGC Approvals					
PPC-NON/CONSTR-0350	MGC - Approve Mass. Community College Training Plans (License # 12)	100%	03-Mar-14 A	15-Jul-14 A	
PPC-NON/CONSTR-0150	MGC - Finalize & Approve Gaming Office Requirements (RFA # 2)	100%	03-Mar-14 A	07-Aug-14 A	
PPC-NON/CONSTR-0170	MGC - Develop & Issue Surveillance System Specifications	100%	03-Mar-14 A	19-Sep-14 A	
PPC-NON/CONSTR-0240	MGC - Issue Free Play Standards (License # 26)	100%	03-Mar-14 A	19-Sep-14 A	
PPC-NON/CONSTR-0290	MGC - Issue State Slot Monitoring System Requirements	100%	03-Mar-14 A	19-Sep-14 A	
PPC-NON/CONSTR-0010	MGC - Provide Regulation / Full Descriptions Of Internal Controls (Statute Check-List # 4)	100%	03-Mar-14 A	30-Sep-14 A	
PPC-NON/CONSTR-0280	MGC - Approve Slot Machine Requirements	100%	03-Mar-14 A	30-Sep-14 A	
PPC-NON/CONSTR-0320	* MGC - License Slot Machine Vendors	100%	03-Mar-14 A	23-Jan-15	13
PPC-NON/CONSTR-0710	* MGC - Approve Exterior Design (FDC #9)	100%	21-Jul-14 A	31-Dec-14 A	
PPC-NON/CONSTR-0720	* MGC - Approve Floor Plan For MGC Approval (FDC # 9)	0%	08-Aug-14 A	15-Jan-15	65
PPC-NON/CONSTR-0340	* MGC - Approve Surveillance System	19.05%	02-Jan-15 A	30-Jan-15	16
PPC-NON/CONSTR-0160	* MGC - Approve Internal Controls	0%	16-Jan-15	3-Mar-15	78
PPC-NON/CONSTR-0730	MGC - Approve Slot Monitoring System	0%	3-Feb-15	16-Mar-15	27
PPC-NON/CONSTR-0140	MGC - Develop & Provide On Site Requirements For Inspection For Pre-Opening Activities (RFA # 2)	0%	2-Mar-15	31-Mar-15	58
PPC-NON/CONSTR-0740	MGC - Approve Slot Machine Testing Program	0%	3-Mar-15	31-Mar-15	17
PPC-NON/CONSTR-0700	MGC - Approval of Responsible Gaming Plan (FDC # 20)	0%	3-Feb-15	15-Apr-15	26
PPC-NON/CONSTR-0190	MGC - On-Site Review & Approval Process Of Surveillance System	0%	24-Feb-15	15-May-15	16
PPC-NON/CONSTR-0130	MGC - Develop & Provide Process & Road Map Requirements For On-Site Operating License Issuance	64.52%	03-Mar-14 A	29-May-15	17
PPC-NON/CONSTR-0230	MGC - Test & Approve Slot Monitoring System for Use	0%	1-Apr-15	29-May-15	17
Other Requirements					
PPC-NON/CONSTR-0450	SG&R - Submit Plan for Regional Tourism (License #23)	100%	30-Mar-14 A	30-Apr-14 A	
PPC-NON/CONSTR-0420	SG&R - Submit Affirmative Marketing Program for Design & Construction and On-site Workforce	100%	28-Mar-14 A	26-Jun-14 A	
PPC-NON/CONSTR-0430	SG&R - Submit Affirmative Marketing Plan for Businesses Providing Goods & Services	100%	28-May-14 A	07-Aug-14 A	
PPC-NON/CONSTR-0440	SG&R - Submit Plan to Work with MA DOL on Employment Opportunities	100%	28-May-14 A	07-Aug-14 A	
PPC-NON/CONSTR-0460	SG&R - Gas Line Easement	100%	05-May-14 A	22-Aug-14 A	
PPC-NON/CONSTR-0330	* SG&R - Execute Amended Lottery Agreement (License # 10)	74.29%	05-Nov-14 A	2-Feb-15	98
PPC-NON/CONSTR-0360	SG&R - Apply For Or Amend Existing & Obtain Alcoholic Beverage License	14.29%	05-Jan-15 A	2-Feb-15	98
PPC-NON/CONSTR-1000	SG&R - Install Security / IT Equipment	0%	18-Feb-15	14-Apr-15	5

* The dates on various items identified above are under evaluation. SG&R and MGC are currently in communication to get dates in line with current non-construction activities.

APPENDIX 3

Plainridge Park Casino Quarterly Report to MGC Affirmative Action Program Design & Construction As of December 31, 2014

Reference 205 CMR 135.02 – (3)

Diversity Plan for the Design and Construction Phase of Plainridge Park Casino previously approved during MGC meeting held May 15, 2014 and project remains in compliance with said plan.

Specifics of said progress addressed in the following Appendix 8 and Appendix 9 of this quarterly report.

APPENDIX 4

Plainridge Park Casino Quarterly Report to MGC Project Schedule Changes As of December 31, 2014

Reference 205 CMR 135.02 – (4)

No circumstances have arisen that would necessitate a major change to the project schedule or impact the completion date of June 2015.

In addition to SGR and Turner Construction monitoring the schedule, on a monthly basis, Turner Construction provides MGC consultants the current project schedule for construction and non-construction activities.

Attached hereto is a report of aerial photos taken as of December 2, 2014 and various project photos taken between January 2 and January 7, 2015.



PENN NATIONAL
GAMING, INC.



Turner

PLAINRIDGE PARK CASINO - PROJECT PHOTOS

Aerial Photos Taken as of 12/2/14





Various Project Photos Taken between 1/2/15 and 1/7/15

Photovoltaic Array on East-Side of Casino



Overlooking West Side of Casino – Photovoltaic Array and Roof Top Units



Northeast Exterior Wall of Casino



View of North Side of Garage Taken at Porte Cochere



Porte Cochere Exterior Wall Progress



North Side of Casino Rooftop Units and Cultured Stone



West Side of Casino Exterior Wall in Progress of Being Caulked



Parking Garage PG-2 Level 4 Lobby



Stair #5 Wall Panels and Cultured Stone



Stair #5 Cultured Stone and Northeast Casino Exterior Wall



Curtain Wall and Main Entry at Porte Cochere



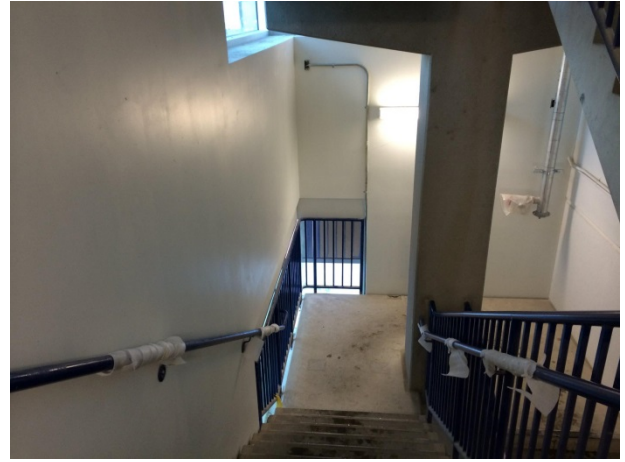
Porte Cochere



West Lean-To of Casino and Supports
for PV Array



Parking Garage PG2 Stairwell Finishes



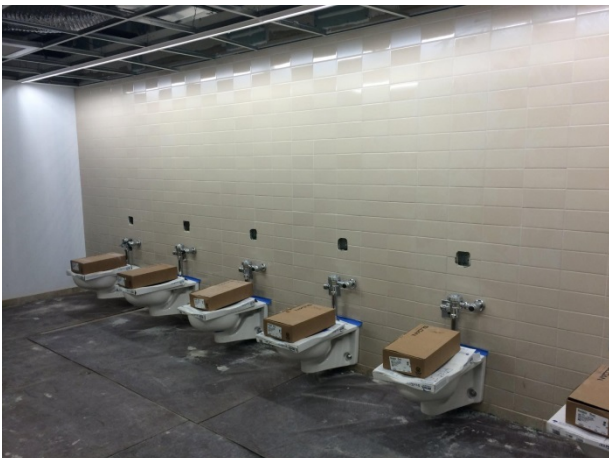
North Side of Parking Garage Finishes



North Side of Parking Garage Office
Finish Installation



Parking Garage Women's Bathroom



Parking Garage Employee
Dining Room



Casino Flutie's Pub and Kitchen High-Wall Taping and Boarding



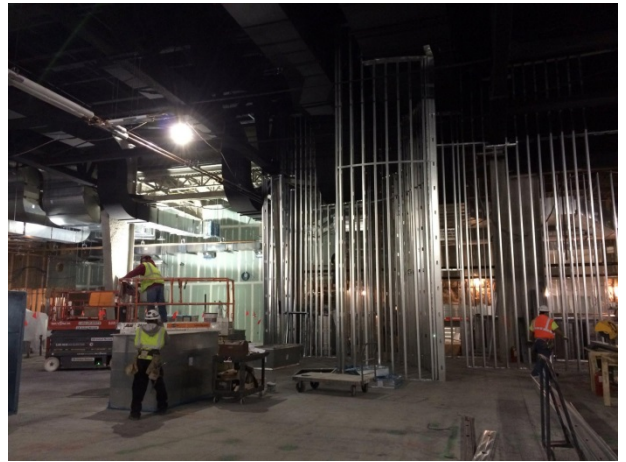
Casino Area 6 Bathrooms



Casino Area 7 Framing



Casino Flutie's Pub Framing



Overall Framing at East Side of Casino



Simulcast Early Turn-over Area



Simulcast Early Turnover Temporary Bar



Simulcast Early Turnover Area



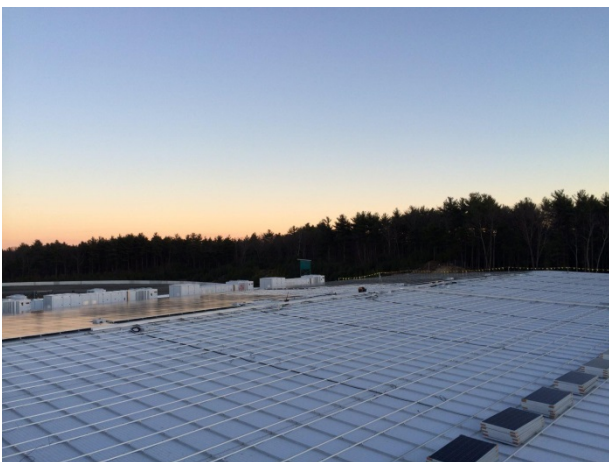
Simulcast Early Turnover Area



Simulcast Early Turnover Area Offices



Photovoltaic Array on Roof



Photovoltaic Array on Roof



APPENDIX 5

**Plainridge Park Casino
Quarterly Report to MGC
Cost of Construction and Capitalization of Gaming Licensee
As of December 31, 2014**

Reference 205 CMR 135.02 – (5)(a)(b)

Financial information requested by this section is currently being prepared by the licensee. Such information will be submitted to MGC concurrent with its release to the public, which is currently anticipated to be January 29, 2015.

**Plainridge Park Casino
Quarterly Report to MGC
Design and Construction Contracts
As of December 31, 2014**

Reference 205 CMR 135.02(5)(c)

LIST OF DESIGN AND CONSTRUCTION CONTRACTS ISSUED QUARTER ENDING DECEMBER 31, 2014			
<u>Vendor/Contractor</u>	<u>Date</u>	<u>Services</u>	<u>MGC Status</u>
Control Point Technology	12/09/14	Audio / Visual Install	NGV - Registrant
AJ Conveyor and Laundry Systems, LLC	12/16/14	Laundry Conveyor System Install	NGV – Pending
Beverage Management Systems	12/16/14	Beverage Dispensing System Install	NGV – Registrant
New England Office Supply	12/30/14	Furniture Install	NGV – Registrant
Southwest Surveillance Systems	12/30/14	Install of Audio / Visual Equipment	NGV – Registrant

Copies of contracts are available at the construction site for review purposes.

APPENDIX 7

Plainridge Park Casino Quarterly Report to MGC Status Report of Construction Activities As of December 31, 2014

Reference 205 CMR 135.02 – (5)(d)

Status Report Reflecting Progress of Construction

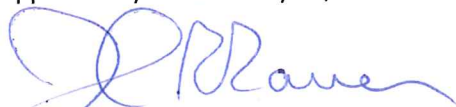
- Significant construction activities to date are in line with approved schedule (see Appendix 2) and include:
 - All contracts have been awarded with exception to landscaping
 - Anticipate awarding in February 2015
 - Exterior of casino building is 95% complete
 - Photovoltaic panels on casino building roof are 40% complete
 - Roof Top Units on casino roof are all set and running
 - Providing temperature control for the gaming floor
 - Asphalt paving binder course has been installed on all site roads and parking lots
 - Site lighting is installed and energized
 - Work has been awarded for the MassDOT offsite improvements and submittals are currently in progress
 - Still awaiting permit for off-site work
 - Interior fitout of casino building is in progress
 - Simulcast operations temporarily relocated to the completed second floor multi-purpose room
 - Balance of simulcast renovation phases in progress; first floor renovations to be completed by March 15, to support live racing start up on April 1
 - Expect certificate of occupancy to be issued end of February for the garage and office spaces; occupancy of offices expected early March

Areas of non-compliance with approved schedule

- None

Certification Statement

I certify that construction activities through December 31, 2014, are in compliance with the project schedule approved by MGC on July 10, 2014.



John R. Rauen
Authorized Representative
Springfield Gaming and Redevelopment, LLC

APPENDIX 8

Plainridge Park Casino Quarterly Report to MGC Project Construction Work Force As of December 31, 2014

Reference 205 CMR 135.02 – (5)(e)

Project Construction Work Force reports the following for WBE/MBE/VBE participation:

Minority	15% participation to date vs. goal of 16%
Female	4% participation to date vs. goal of 7%
Veteran	10% participation to date vs. aspirational goal of 3%

Detailed statistical reports attached:

- Subcontractors Workforce Percentages
- Total Weekly Manpower Chart
- Weekly Hours and Percentages
- Workers Onsite by Company Log

Deviation from established goals:

Minority	15% participation to date vs. goal of 16%
Female	4% participation to date vs. goal of 7%

- Overall manpower has increased from last quarter, therefore diluting the M/W workforce. Turner continues to hold corrective action meetings with subcontractors in noncompliance.
- Licensee and Turner will continue to monitor work force participation and established goals

Weekly Manpower Report:

- Certain periods in November/December were directly affected by drop in manpower due to holidays and four-day workweeks.

SUBCONTRACTORS WORKFORCE PERCENTAGES ~ Plainridge Park Casino

WEEK ENDING	SUBCONTRACTOR	THIS WEEKS HOURS	LAST WEEKS HOURS	Y-T-D JOB HOURS	Minority Y-T-D HOURS	LAST WEEK Minority %	THIS WEEK Minority %	Minority YEAR TO DATE %	Female Y-T-D HOURS	LAST WEEK Female %	THIS WEEK Female %	Female YEAR TO DATE %	Veteran Y-T-D HOURS	LAST WEEK Veteran %	THIS WEEK Veteran %	Veteran YEAR TO DATE %
12/28/2014	Turner Construction	352.0	392.0	9,737.0	2,857	38	31	29	1,341.0	10	11	14	0.0	0	0	0
12/28/2014	Marois Brothers	312.0	488.0	21,046.0	2,581	13	21	12	132.0	0	0	1	2,413.0	10	10	11
12/28/2014	S&F Concrete	42.0	116.5	6,195.5	542	9	0	9	0.0	0	0	0	0.0	0	0	0
12/28/2014	NB Kenney	486.0	430.0	15,073.5	611	6	0	4	1,100.0	6	9	7	1,973.0	12	12	13
12/28/2014	Prime Steel	0.0	94.0	5,055.0	768	0	0	15	389.0	0	0	8	168.5	0	0	3
12/28/2014	Ostrow Electrical	799.0	1,069.0	17,711.5	2,174	13	13	12	1,258.5	4	4	7	4,609.5	23	24	26
12/28/2014	Kone	136.0	168.0	1,115.0	0	0	0	0	0.0	0	0	0	0.0	0	0	0
12/28/2014	Costa Brothers	12.0	102.0	5,548.0	398	0	0	7	0.0	0	0	0	1,035.5	8	50	19
12/28/2014	Modern Glass	160.0	277.0	2,168.5	0	0	0	0	0.0	0	0	0	184.0	14	0	8
12/28/2014	Chapman Waterproofing	56.0	85.0	2,686.5	746	0	0	28	72.5	0	0	3	268.0	0	0	10
12/28/2014	TJ McCartney	211.0	336.0	13,330.5	4,056	0	0	30	0.0	0	0	0	682.0	0	0	5
12/28/2014	Pro Cut	4.0	20.0	425.0	0	0	0	0	0.0	0	0	0	0.0	0	0	0
12/28/2014	RM Technologies	40.0	0.0	2,746.0	1,535	0	50	56	0.0	0	0	0	35.0	0	0	1
12/28/2014	Arden Engineering	257.0	268.5	3,741.5	0	0	0	0	0.0	0	0	0	134.0	0	0	4
12/28/2014	Island International	136.0	290.0	5,247.0	1,119	20	40	21	0.0	0	0	0	634.0	0	0	12
12/28/2014	Ryan Iron	0.0	48.0	1,925.0	177	0	0	9	0.0	0	0	0	0.0	0	0	0
12/28/2014	Titan Roofing	114.0	278.5	3,811.0	155	0	0	4	0.0	0	0	0	557.5	14	21	15
12/28/2014	DDS Industries	302.5	319.5	3,908.3	0	0	0	0	0.0	0	0	0	521.0	12	9	13
12/28/2014	Cox Engineering	445.0	1,002.0	8,575.0	1,338	16	14	16	0.0	0	0	0	982.0	10	8	11
12/28/2014	Coghlin Electric	1,217.0	1,353.5	8,371.5	0	0	0	0	492.0	5	6	6	380.0	4	2	5
12/28/2014	Commonwealth Scaffold	88.0	114.0	1,946.0	113	0	0	6	0.0	0	0	0	27.0	0	0	1
12/28/2014	Atlantic Contracting	24.0	56.0	505.0	0	0	0	0	0.0	0	0	0	0.0	0	0	0
12/28/2014	Reid Electric	24.0	40.0	520.0	0	0	0	0	0.0	0	0	0	520.0	100	100	100
12/28/2014	E.S. Boulos	220.0	392.0	2,322.0	216	20	18	9	0.0	0	0	0	84.0	10	9	4
12/28/2014	Soep Painting	116.0	280.0	1,551.0	428	29	22	28	0.0	0	0	0	0.0	0	0	0
12/28/2014	H. Carr & Sons	553.5	1,704.0	8,948.5	2,019	26	30	23	52.0	0	9	1	569.0	7	7	6
12/28/2014	High Point Interiors	20.0	160.0	630.0	0	0	0	0	0.0	0	0	0	0.0	0	0	0
12/28/2014	Circle Floors	0.0	0.0	93.0	93	0	0	100	0.0	0	0	0	0.0	0	0	0
	TOTALS	5,217.5	7,137.5	149,035.1	21,672.9	15	12	15	5,653.5	3.0	5	4	14,633.0	11.0	9	10

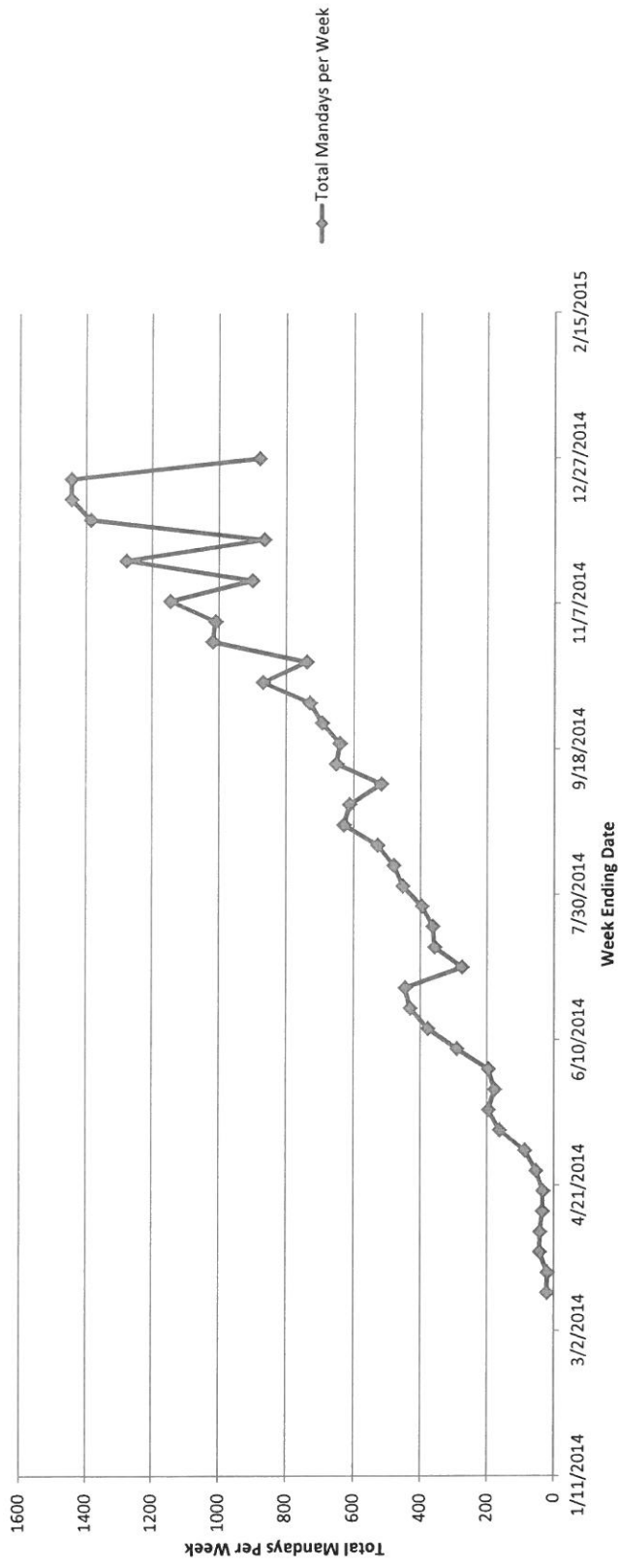
Project Goals
 Minority 16%
 Female 7%
 Veteran *Aspirational 3%

Year To Date
 15 %
 4 %
 10 %

WEEKLY HOURS AND PERCENTAGES ~ Plainridge Park Casino

SUBCONTRACTOR	Minority HOURS	Minority %	Last week Minority %	Female HOURS	Female %	Last Week Female %	Veteran HOURS	Veteran %	Last Week Veteran %	TOTAL HOURS	Last Weeks Hour	Week Ending
Turner Construction	110	31	38.0	40.0	11	10	0.0	0	0	9737.0	392.0	12/28/2014
Marois Brothers	64	21	13.0	0.0	0	0	32.0	10	10	21046.0	488.0	12/28/2014
S&F Concrete	0	0	9.0	0.0	0	0	0.0	0	0	6195.5	116.5	12/28/2014
NB Kenney	0	0	6.0	45.0	9	6	57.0	12	12	15073.5	1,170.0	12/28/2014
Prime Steel	0	0	0.0	0.0	0	0	0.0	0	0	5055.0	94.0	12/28/2014
Ostrow Electrical	106	13	13.0	35.0	4	4	193.0	24	23	17711.5	1,069.0	12/28/2014
Kone	0	0	0.0	0.0	0	0	0.0	0	0	1115.0	168.0	12/28/2014
Costa Brothers Masonry	0	0	0.0	0.0	0	0	6.0	50	8	5548.0	102.0	12/28/2014
Modern Glass	0	0	0.0	0.0	0	0	0.0	0	14	2168.5	277.0	12/28/2014
Chapman Waterproofing	0	0	0.0	0.0	0	0	0.0	0	0	2686.5	85.0	12/28/2014
TJ McCartney	0	0	0.0	0.0	0	0	0.0	0	0	13330.5	336.0	12/28/2014
Pro Cut	0	0	0.0	0.0	0	0	0.0	0	0	425.0	20.0	12/28/2014
RM Technologies	20	50	0.0	0.0	0	0	0.0	0	0	2746.0	0.0	12/28/2014
Arden Engineering	0	0	0.0	0.0	0	0	0.0	0	0	3741.5	268.5	12/28/2014
Island International	55	40	20.0	0.0	0	0	0.0	0	0	5247.0	290.0	12/28/2014
Ryan Iron	0	0	0.0	0.0	0	0	0.0	0	0	1925.0	48.0	12/28/2014
Titan Roofing	0	0	0.0	0.0	0	0	24.0	21	14	3811.0	278.5	12/28/2014
DDS Industries	0	0	0.0	0.0	0	0	28.5	9	12	3908.3	319.5	12/28/2014
Cox Engineering	61	14	16.0	0.0	0	0	36.0	8	10	8575.0	1,002.0	12/28/2014
Coghlin Electric	0	0	0.0	72.0	6	5	24.0	2	4	8371.5	1,353.5	12/28/2014
Commonwealth Scaffold	0	0	0.0	0.0	0	0	0.0	0	0	1946.0	114.0	12/28/2014
Atlantic Contracting	0	0	0.0	0.0	0	0	0.0	0	0	505.0	56.0	12/28/2014
Reid Electric	0	0	0.0	0.0	0	0	24.0	100	100	520.0	40.0	12/28/2014
ES Boutos	40	18	20.0	0.0	0	0	20.0	9	10	2322.0	392.0	12/28/2014
Seep Painting	26	22	29.0	0.0	0	0	0.0	0	0	1551.0	280.0	12/28/2014
H. Carr & Sons	165	30	26.0	52.0	9	0	36.0	7	7	8948.5	1,704.0	12/28/2014
High Point Interiors	0	0	0.0	0.0	0	0	0.0	0	0	630.0	160.0	12/28/2014
Circle Floors	0	0	0.0	0.0	0	0	0.0	0	0	93.0	0.0	12/28/2014
TOTAL HOURS FOR THE WEEK	647.0			244.0			480.5			165610.6		
TOTAL % FOR THE WEEK	12			5			9					

Plainridge Park Casino Total Weekly Manpower



The Total Mandays per Week is the sum of the total number of days worked by each worker in a given week.

Plainridge Park Casino	
Cumulative individuals onsite through Dec 31 2014	
Company	Number of Workers
Axiom	3
Arden Engineering	12
Atlantic	5
Baldwin	2
Boston Lightning Rod	2
Briggs	3
Bristol Fire	1
Chapman	18
Circle Floors	8
Clifford & Galvin	3
Coghlin	39
Collins Overhead	1
Commonwealth Scaffold	19
Cook Landclearing	2
Cosco Inc.	8
Costa	14
Cox Engineering	37
Currie	1
DDS	8
Don Martin	11
ESB	17
FEI	3
Food Equipment Inst.	2
Glancy	4
H. Carr & Sons	56
H.A.S.	2
Hallmore	3
Haron	1
HAS Construction	6
Heritage	2
High Point	2
High Voltage Maintenance	2
Imperatore	3
Island	13
JCJ Arch.	2
JME	1
Johnson Insul	3
King	18
Kone	6
MBI	29
MD Drilling	11
Melo Rod	12
Modern Glass	20
MTK Const.	4
NBK	40
New England Finish	1
Ostrow	27
Penn Game	4
Perry Assoc.	1
Pinck	1
Prime	18
Pro Cut	5
Richard Reed Electric	1
RM Tech	14
Ryan Iron	8
S&F Concrete	67
S.O.S.	1
Security Fence	6
Soep Painting	8
Soini	5
Steelco	2
Sully Mac	6
Tilton	4
Titan	26
TJ McCartney	55
Turner	38
Ver-tex	1
Waterman	1
Willow Tree	3
Total	762

APPENDIX 9

**Plainridge Park Casino
Quarterly Report to MGC
Contracts and Payments to Minority, Women and
Veteran Business Enterprises for Construction Phase
As of December 31, 2014**

Reference 205 CMR 135.02 – (5)(f)

Detailed statistical reports attached:

M/W/VBE Tracking Report updated through 12/31/14

- Turner has issued \$82.2 million in construction contracts and change orders and received commitments of the following M/W/VBE participation:

Minority	12% participation to date vs. goal of 4%
Female	13% participation to date vs. goal of 7%
Veteran	10% participation to date vs. aspirational goal of 3%

Actual Payments to Minority Business Enterprises

- As of December 31, 2014, commitments totaling \$27,587,509 have been made to MBE/WBE/VBE enterprises.
- Through December 31, 2014, payments to MBE/WBE/VBE amounted to \$9,974,175.

updated: 12/30/2014

Trade	Contract Award Date	Award Amount	Revised Amount	Awarded Prime Subcontractor	MBE / WBE / VBE Opportunity	Updated At award						Updated Prior to start and during construction						Updated as payments are made		
						Original Commitment						Current Amount						Payments to Date		
						MBE	%	WBE	%	VBE	%	MBE	%	WBE	%	VBE	%	MBE	WBE	VBE
Existing Conditions Demo and Structure lower tier	05/16/14			Turner	None															
Temp Stair lower tier	05/16/14			Commonwealth	None															
Earthwork lower tier	04/11/14			Marois	Don Martin Corporation FC Corporation Security Fence Company Willow Tree Outdoor Markings, Inc. Dagle Electric Fabiano Oil		15% 6%			4% 2% 1%			8%				2% 1% 4% 2%			
Earthwork - Garage lower tier	05/12/14			Marois	None															
Concrete lower tier	04/04/14			S&F	S&F Rebars and Mesh Melo's Rod Busters		88%			6% 6%			91%				5% 5%			
Concrete - Garage lower tier	05/12/14			S&F	S&F Rebars and Mesh Melo's Rod Busters		88%			7% 5%			88%				7% 5%			
Precast Garage	07/09/14			Blakeslee Prestress	None															
Demolition Award	07/16/14			R M Technologies	R M Technologies		100%						100%							
Masonry lower tier	06/10/14			Costa Brothers Masonry	Costa Brothers Masonry		100%						100%							
Steel Framing lower tier	04/11/14			Industries Canatal	Erection and Welding		11%						6%							
Misc Metal lower tier	07/09/14			Ryan Iron Works	None															
Damproofing & Waterproofing lower tier	06/19/14			Chapman	Gilbert & Becker Villanova Supplies Exchange		9%			3%			8%				3%			
Membrane Roofing lower tier	05/16/14			Titan Roofing	Titan Roofing		100%						100%							
Spray on Fireproofing and Garage Spray Insulation lower tier	07/24/14			Island International	Iroquois Bar Corp		8%													
Spray Foam lower tier	06/17/14			Island International	Iroquois Bar Corp		2%													
Doors & Frames lower tier	09/10/14			Eaton Door and Frame	None															
Entrances Storefronts & Curtainwall lower tier	06/17/14			Modern Glass	Material Hardware Coulter Construction		9%			2%			8%							
Plaster & Gypsum Board lower tier	06/10/14			TJ McCartney	TJ McCartney					100%							100%			
Folding Partitions lower tier	11/12/14			CRF, Inc Interior Systems	None															
Millwork lower tier	11/26/14			Allegheny Millwork	None															
Flooring lower tier	11/26/14			Circle Flooring	None															
Theming lower tier	11/26/14			Adirondack Studios	Penn Staines Products													0.7%		

updated: 12/30/2014

Trade	Contract Award Date	Award Amount	Revised Amount	Awarded Prime Subcontractor	MBE / WBE / VBE Opportunity	Updated At award					Updated Prior to start and during construction					Updated as payments are made			
						Original Commitment					Current Amount					Payments to Date			
						MBE	%	WBE	%	VBE	MBE	%	WBE	%	VBE	MBE	WBE	VBE	
Paint lower tier	11/25/14			Soep Painting	Passomo Paints Inc JH Bennett				0.06%		0.4%			0.1%		0.4%			
Photovoltaic Solar Generation Award lower tier	09/21/14			E.S. Boulos of Westbrook	Senices Enterprise		11%						11%						
Kitchen Equipment lower tier	10/02/14			Johnson-Lancaster	Certified Connections Inc.		23%						23%						
Pre-Engineered Metal Building lower tier	04/11/14			Currie Building Systems	None														
Resinous Flooring lower tier	11/26/14			New England Decks and Floors	New England Decks and Floors					100%						100%			
Elevators - Garage lower tier	05/16/14			Kone	None														
Fire Protection- Garage lower tier	06/05/14			Arden Engineering	E.L. Waterman				12%				12%						
Temp Fire Protection lower tier	05/20/14			Bristol Fire Protection	None														
Fire Protection- Casino lower tier	09/11/14			Arden Engineering	E.L. Waterman				11%				10%						
Plumbing- Casino lower tier	09/22/14			NB Kenney	Construction Planners Hat Creek Outfit, Inc Total Mechanical				11%	3%			7%	4%		3%			
Plumbing - Garage lower tier	05/16/14			NB Kenney	None														
Temp Plumbing lower tier	04/11/14			NB Kenney	None														
Underground Plumbing lower tier	06/17/14			NB Kenney	None														
HVAC Parking Garage lower tier	08/14/14			DDS Industries	General Safety Services				0.1%					0.1%					
HVAC Casino lower tier	09/22/14			Cox Engineering	Cox Engineering					100%						100%			
Casino Elevator lower tier	08/08/14			ThyssenKrupp	None														
MEP Equipment - Casino and Garage lower tier	04/11/14			Turner Logistics	None														
MEP Equipment - Simulcast lower tier	06/17/14			Turner Logistics	None														
Overhead Door & Loading Dock Equipment lower tier	09/11/14			Collins Overhead Door, Inc	Dagle Electric				3%					3%					
Electrical- Casino lower tier	09/22/14			Coghlin Electric	Coghlin Electric				100%					100%					
Electrical - Garage lower tier	05/12/14			Ostrow Electric	Reid Electric Fire Code Design		13%		4%				13%		4%				
Underground and Site Electrical lower tier	06/17/14			Ostrow Electric	Reid Electric Granite City Electric		3%		10%				3%		8%				
Casino GWB/Casino & Garage ACT lower tier	11/25/14			H. Carr & Sons	Tavares, LLC/Essex		11%						11%						

updated: 12/30/2014

Trade	Contract Award Date	Award Amount	Revised Amount	Awarded Prime Subcontractor	MBE / WBE / VBE Opportunity	Updated At award					Updated Prior to start and during construction					Updated as payments are made				
						Original Commitment					Current Amount					Payments to Date				
						MBE	%	WBE	%	VBE	%	MBE	%	WBE	%	VBE	%	MBE	WBE	VBE
Title and Interior Stone lower tier	11/25/14			High Point Interiors	None															
Specialties lower tier	11/26/14			Ver-Tex	None															
TOTALS TO DATE		\$ 72,317,833.00	\$ 82,223,229.00			\$ 8,373,091.77	12%	\$ 9,514,755.00	13%	\$ 8,014,368.00	11%	\$ 9,468,955.32	12%	\$ 10,293,593.46	13%	\$ 7,824,960.91	10%	\$ 5,683,913.30	\$ 2,119,589.00	\$ 2,170,673.00

Total Contracts and Change Orders Awarded to Date	\$ 82,223,229.00
Total W/M/VBE Original Commitments	\$ 25,902,214.77
Total W/M/VBE Commitments to Date	\$ 27,587,509.69
Total W/M/VBE Payments through September 30, 2014	\$ 2,683,379.00
Total W/M/VBE Payments through December 31, 2014	\$ 9,974,175.30

Original Commitment	\$25,902,214.77	Current Commitment	\$27,587,509.69	Payments to Date	\$ 9,974,175.30
---------------------	-----------------	--------------------	-----------------	------------------	-----------------

PROJECT GOALS	COMMITMENT TOTALS
MBE - 4%	MBE Amount 12%
WBE - 7%	WBE Amount 13%
VBE - 3%	VBE Amount 10%

APPENDIX 9

Plainridge Park Casino Quarterly Report to MGC Contracts and Payments to Minority, Women and Veteran Business Enterprises for Design Phase As of December 31, 2014

Reference 205 CMR 135.02 – (5)(f)

Detailed statistical report:

Minority	0% participation to date vs. goal of 4%
Female	0% participation to date vs. goal of 7%
Veteran	0% participation to date vs. aspirational goal of 3%

Deviation from established goals:

- Unique set of circumstances, as described in the June 30 quarterly report, remain the same.
- JCJ, project architect, has identified a WBE structural engineer to assist with modifications being made to the existing racing building. Contract not yet awarded but anticipated that work starting this upcoming quarter.
- JCJ has contracted with a disadvantaged subcontractor in the amount of \$20,000 and made payments of \$21,000 as of December 31, 2014; however, we understand this sub does not fall into any of the M/W/VBE categories.
- SGR will continue to work with design team members to identify any further MBE/WBE/VBE opportunities.

Actual Payments to Minority Business Enterprises

As of December 31, 2014, no payments were contractually due to any design team M/W/VBE enterprises.

APPENDIX 10

Plainridge Park Casino Quarterly Report to MGC Permits As of December 31, 2014

Reference 205 CMR 135.02 – (6)

Permit Chart and Corresponding Documents (pursuant to 205 CMR 120.01)

- Permit Status Report dated January 12, 2015 attached.
- Casino Build-Out Permit received October 20, 2014.

Updates to MassDOT/MEPA Process

- Received MassDOT/MEPA Section 61 Findings for offsite traffic improvements
- Received comments on final design plans submitted to MassDOT Boston and District 5 offices
 - Expect highway access permit in January and commencement of Route 1 off-site work March 2015
 - Currently working with contractor in reviewing shop drawings/RFIs/procurement.

Permit Amendments

- Expect to file a special permit amendment January 13, 2015 in reference to the areas identified below:
 - Expanded Parking for Patrons and Employees
 - Racing Regulatory Building
 - Smoking Area Expansion
 - Armored Car Bay Relocation
 - Signage
- None of the above proposed improvements fall within the A+B+C Open Space as required by LEED Credit SSc5.2.

Permit Appeals

- None

Plainridge Park Casino Permit Status Report

Report Updated January 12, 2015

<u>PERMIT</u>	<u>DATE ISSUED</u>
1. <u>Plainville Conservation Commission</u>	
• Negative Determination of Applicability (sitework) (no number assigned)	10/23/2012
• Order of Conditions (electrical transformer substation) Mass DEP File No. SE 265-0322	11/19/2013
• Order of Conditions (additional surface parking) Mass DEP File No. SE 265-0323	11/19/2013
• Order of Conditions (offsite highway improvements) Mass DEP File No. SE 265-0324	11/19/2013
2. <u>Plainville Board of Health</u>	
• Environmental Health Impact Permit (no number assigned)	07/09/2013
• Modified Environmental Health Impact Permit Stormwater Treatment Units (no number assigned)	08/11/2014
3. <u>Plainville Planning Board</u>	
• Amended Special Permit (no number assigned)	08/29/2013
4. <u>Plainville Building Department</u>	
• Building Permit (Core Shell Structure) Permit Number 14-134	06/18/2014
• Building Permit (Simulcast Demolition) Permit Number 14-153	08/06/2014
• Building Permit (Parking Garage Transfer) Permit Number 14-131A	10/07/2014
• Building Permit (Casino Fitout) Permit Number 14-257	10/20/2014
5. <u>Mass. Department of Transportation (MassDOT)</u>	
• Attractions Guide Signage Permit Number 5-2012-0130	09/05/2012
• Section 61 Findings (Reference MEPA EEA #11431)	10/07/2014
• Soil Borings for Design and Signals Permit Number 5-2014-0506	11/20/2014

6. Mass. Division of Fisheries and Wildlife (Mass DFW)
 - Confirmation of “No-Take” Letter under Mass. Natural Heritage and Endangered Species Program **NHESP Tracking No. 10-27867** 04/12/2013

7. Mass. Exec. Office of Energy & Environmental Affairs
 - Certificate of the Secretary of Energy and Environmental Affairs on the Final Environmental Impact Report under the Massachusetts Environmental Policy Act (MEPA FEIR) **EEA Number 11431** 12/27/2013
 - E-mail from MEPA Director N-Grid Distribution Line to MITS – no review required **EEA Number 11431** 10/01/2014

8. U. S. Environmental Protection Agency (US EPA)
 - Confirmation of No Permit Required under the National Pollutant Discharge Elimination System (NPDES) Permitting requirements 06/12/2013

9. Massachusetts Gaming Commission
 - Section 61 Findings (Reference MEPA EEA #11431) 12/31/2014

Pending Project Permits:

- * MassDOT Highway & Entrance Modifications
Permit # 5-2014-0416 Under review

Future Project Permits:

- A.) Plainville Conservation Commission - Notice of Intent
Racing Regulatory Building and Parking Updates Filing January 2015

- B.) Plainville Planning Board – Amendment to Special Permit
Racing Regulatory Building
Smoking Area Expansion Filing January 2015
Armored Car Bay Relocation
Expanded Parking for Patrons and Employees
Corporate Branding and Wayfinding Signage Modifications

- C.) Plainville Board of Health – Amendment to Environmental Health Permit
Racing Regulatory Building
Smoking Area Expansion Filing January 2015
Armored Car Bay Relocation
Expanded Parking for Patrons and Employees

APPENDIX 11

**Plainridge Park Casino
Quarterly Report to MGC
Notice to Organized Labor
As To Licensees Commitments for Affirmative Action
As of December 31, 2014**

Reference 205 CMR 135.02 – (7)

No change from last quarter. Remain in compliance with licensing requirements and commitments pursuant to MGL. C23K various sections.

Turner's relationship with the Business Agents and Managers remains positive and receptive and they continue to be cooperative in reinforcing the goals of 16% minority, 7% female and 3% aspirational veterans.

APPENDIX 12

Plainridge Park Casino Quarterly Report to MGC Operational Affirmative Action Plan As of December 31, 2014

Reference 205 CMR 135.02 – (8)

Detailed Statistical Report Attached:

Minority	6% participation to date vs. goal of 6%
Female	5% participation to date vs. goal of 12%
Veteran	23% participation to date vs. aspirational goal of 3%

- As of December 31, 2014, total commitments of \$5.9 million have been made for procurement of non-construction goods and services.
- SGR anticipates higher participation of M/W/VBE enterprises as further contracts are issued in first and second quarters as planned.
- SGR continues to reach out to M/W/VBE enterprises to identify and further opportunities for participation.

Actual Payments to Minority Businesses

- As of December 31, 2014, no payments have been contractually due to any M/W/VBE enterprises.

Vendor Outreach Programs:

- SGR participated as a guest speaker at a CEO Roundtable Discussion event held by the Greater New England Minority Supplier Diversity Council in Boston. The event was well attended by approximately 100 – 125 people from numerous surrounding area businesses.
- SGR is slated to speak at another Minority Business Development Agency CEO Roundtable Discussion event hosted by Greater New England Minority Supplier Diversity Council in Boston late January.

<u>Category</u>	<u>Payments as of 12/31/14</u>	<u>Purchase Order Balance</u>	<u>Executed Contracts as of</u>		<u>MBE</u>	<u>WBE</u>	<u>VBE</u>
			<u>12/31, not in Wennsoft</u>	<u>Total Commitment</u>			
Audio Visual							
Signage							
Furnishings							
Gaming Equipment							
Surveillance							
Operations Equipment							
IT Equipment							
	\$ 230,663	\$ 1,763,292	\$ 3,929,293	\$ 5,923,248	\$ 335,636	\$ 290,944	\$ 1,341,644
					6%	5%	23%

MBE Details Value
New England Office Supply

WBE Details
Beverage Management Systems

VBE Details
Southwest Surveillance Systems (Phase #1)
Z-Band (Subcontractor to Control Point - A/V)

Note: No payments made to Diverse Vendors as of 12/31/14.

No Documents



MEMORANDUM

DATE: January 18, 2015

TO: Stephen Crosby, Chairman
Gayle Cameron, Commissioner
Jim McHugh, Commissioner
Bruce Stebbins, Commissioner
Enrique Zuniga, Commissioner

FROM: Rick Day / John Glennon / Derek Lennon

SUBJECT: Central Management System – Technical Discussion Summary

As agreed to at the last Commission meeting MGC hosted a 2 hour meeting of our licensees at our Boston offices on January 15th, 2015. The meeting was chaired by Executive Director Day, and the agenda was focused on the introduction of new information to the process, and a candid technical discussion of the CMS architecture and requirements. The meeting agenda and attendee list are attached (attachments A & B).

Meeting Summary

CMS Prior Experience

- Wynn and Penn National Gaming both have experience with GTECH's CMS operating concurrently with their Slot Management Systems. Both reported no significant issues with the use of GTECH.
- GTECH's Intelligen system will be installed at MGM's operation in Maryland,

Player Management Systems –

- MGM expressed concern about CMS and Player Management Systems that are integrated/connected to their Slot Management System (SMS). There is no requirement for any interoperability with either the house SMS or Player Management Systems.



Massachusetts Gaming Commission

101 Federal Street, 23rd Floor, Boston, Massachusetts 02110 | TEL 617.979.8400 | FAX 617.725.0258 | www.massgaming.com



Data Security / Protection of Personally Identifiable Information (PII)

- Concerns about the protection of confidential information were addressed. Because there are no interoperability requirements between the CMS and SMS/Slot Management System, there is no access to any PII. Please note: Research data sets, required to be provided to the Commission by licensees, will be anonymized and stored by a third party vendor. The vendor will to be engaged by Director Vander Linden and his research partners.

Conflict of Interest

- The issue of Conflict of Interest will be addressed by the ongoing IEB background investigation of GTECH.

G2S / S2S requirements

- Significant discussion took place regarding the Gaming Standards Association (GSA) protocol requirements in MGC regulations 205 CMR 143.16: Communications Protocols (attachment C). Licensees expressed concerns about the slow speed of standards adoption by manufacturers, the availability of popular/profitable games running only on the G2S platform, and the potential for limiting choice of game mix on floor. Licensees were reminded that the Commission is open to discussing the G2S/S2S requirement further, and could take the matter up concurrently with changes to regulations being considered related to the implementation of the Responsible Gaming Framework, as well as Server Based Gaming and Progressive Slots.

Server Based Gaming

- Server based gaming, which is enabled by GSA G2S protocols, is the distribution of game level software from a central computer/server to individual EGD's on the gaming floor. MGM expressed a concern that regulations for the CMS would require the implementation of IGT's SBx platform. GTECH confirmed that CMS does not require any server based gaming functionality.

Hybrid Gaming Floors

- MGM expressed concern with GTECH's experience supporting a hybrid gaming floor (a mix of SAS and G2S EGD's) GTECH has Intelligen installations with hybrid EGD floors as was discussed in the meeting





Outages

- Penn National Gaming expressed concern about minimizing any impact the installation of CMS may have on their planned opening of the Plainridge Park Casino in June. In addition, there was discussion regarding integration of CMS into the gaming floor after the startup of operations. While it is preferable to install the CMS system concurrently with the SMS/Player Management Systems in advance of a facility opening, post opening integration of CMS is possible with minimal disruption to the gaming floor operations.

Cost Benefit Analysis

- Discussion of the financial models used in the RFR process yielded no new information.

Next Steps:

- MGM requested additional time on the January 22 Commission meeting agenda to address remaining areas of concern. Executive Director Day allowed for 20 minutes.
- Executive Director Day requested that any additional material for the January 22 meeting be submitted by 9AM, Tuesday morning.



Massachusetts Gaming Commission



Attachment A

CMS Tech Discussion January 14, 2015 - 9:30 to Noon Agenda

What's New?

- **Cost Benefit Analysis**
- **Exception Reports**
- **Installation of a CMS**
- **Outages**
- **New Jersey's DGE IGaming Process**
- **Compatibility with CMS (G2S, S2S, SAS)**
- **Other**



Massachusetts Gaming Commission

101 Federal Street, 23rd Floor, Boston, Massachusetts 02110 | TEL 617.979.8400 | FAX 617.725.0258 | www.massgaming.com



Attachment B
CMS Tech Discussion
January 14, 2015 - Participants

MGC

Rick Day – Executive Director
John Glennon – CIO
Derek Lennon – CFAO
Todd Grossman – Deputy General Counsel
Vanessa Orso – IEB Financial Investigator

GTECH

Matt Cedor - Regional Vice President, Operations,
Gary Cherwinski, General Manager of GTECH operations in Pennsylvania and Maryland

Penn National Gaming

Lance George – VP/General Manager - Plainridge Park Casino
Jason Gittle – IT Director – Plainridge Park Casino
Bill Haynes - IT Infrastructure – Penn National Gaming

Wynn

Robert DeSalvio – Senior Vice President - Wynn Resorts Development

MGM

Rick Heil - Chief Architect – Applications - MGM Resorts International
Mike Mathis, President and COO of MGM Springfield
Seth Stratton, Vice President and General Counsel for MGM Springfield
Joshua Soliz, Vice President & CTO Global Infrastructure Management, MGM Resorts Intl
Marty Nastasia, Director of Government Law & Strategies, Brown Rudnick LLP

Participants via Conference Bridge

MGC Consultant

Frank Neborsky – PowerStrategies

Gaming Laboratories International

Ali Ghanavati - Gaming Development Representative **Attachment C**



Massachusetts Gaming Commission

101 Federal Street, 23rd Floor, Boston, Massachusetts 02110 | TEL 617.979.8400 | FAX 617.725.0258 | www.massgaming.com



205 CMR 143.16: Communications Protocols

(1) A gaming licensee shall not operate any slot machine in a gaming establishment unless the slot machine: (a) is able to bi-directionally communicate with the commission's central control system (if required by the commission); (b) transmits, on a per bet basis, data relative to amounts wagered, amounts won, cash in, cash out, and similar financial information necessary for tax collection and auditing; (c) allows remote verification of gaming device software using a SHA-1 or similar hashing system; (d) allows remotely activating and disabling slot machines; and (e) transmits data relative to any restarts, shutdowns, resets, game changes, door open, and other maintenance events;

(2) A gaming licensee shall not operate any slot machine in a gaming establishment after January 1, 2017 unless that slot machine is able to directly communicate with the commission's central control system (if required by the commission) using the Gaming Standards Association's G2S Message Protocol and Point-to-Point Transport Specification. Provided, however, any slot machine that is registered and operating in a gaming establishment prior to January 1, 2017 may use protocol convertor board, or other similar devices, to communicate with the commission's central control system.

(3) The required versions of the Gaming Standards Association's G2S Message Protocol and Point-to-Point Transport Specification referenced in 205 CMR 143.16(2), as well as the required protocol options, commands, meters, and events, shall be specified by the commission and posted on the commission's website.



Massachusetts Gaming Commission

101 Federal Street, 23rd Floor, Boston, Massachusetts 02110 | TEL 617.979.8400 | FAX 617.725.0258 | www.massgaming.com

Glennon, John R. (MGC)

From: Nastasia, Martin T. <MNastasia@brownrudnick.com>
Sent: Monday, January 19, 2015 9:23 PM
To: Lennon, Derek (MGC); Glennon, John R. (MGC)
Cc: Grossman, Todd (MGC); Mathis, Michael; lance.george@pngaming.com; Day, Rick (MGC); robert.desalvio@wynnresorts.com
Subject: CMS Package for Commissioners and MGC Staff
Attachments: Additional Questions for GTECH CMS Evaluation 2015-01-18v2.pdf; Hybrid Slot Floor Layouts-2015-01-18v03.pdf; 20120919 - Intelligen Certification - GSACT20120920001.pdf

John, Derek,

Thank you once again for meeting with us last Thursday to discuss the Central Monitoring System (CMS) currently under consideration by the MGC. Enclosed I have attached materials for the Commissioner's review. These documents have been reviewed, approved and respectfully submitted by all three licensees. We would like to have these three documents included in the Commissioner's packet for this week's hearing. We look forward to discussing these materials in greater detail during our presentation on Thursday. In addition we would welcome the opportunity to answer any questions from the Commissioners on the documents and the CMS proposal during our presentation. Please let me know if you have any questions.

Best,
Marty

Marty Nastasia
Director of Government Law & Strategies
Brown Rudnick, LLP

The information contained in this electronic message may be legally privileged and confidential under applicable law, and is intended only for the use of the individual or entity named above. If the recipient of this message is not the above-named intended recipient, you are hereby notified that any dissemination, copy or disclosure of this communication is strictly prohibited. If you have received this communication in error, please notify Brown Rudnick LLP, (617) 856-8200 (if dialing from outside the US, 001-(617)-856-8200) and purge the communication immediately without making any copy or distribution.

Additional Questions re
Central Monitoring System Request for Response (RFR)
BD-15-1068-1068C-1068L-00000001399

Hybrid Slot Floor Experience and Concerns

In section 5.2.4, subsection 12 of the RFR, a requirement is listed to not be obtrusive to players or employees of an operator facility. Based on the following information, MGM is concerned regarding the fulfillment of that requirement based on our experience with server based gaming environments, specifically in a hybrid slot floor environment which we will define below.

A hybrid slot floor, in our definition, is a slot floor that employs the use of multiple EGDs types that were designed to communicate to other systems utilizing specific protocols such as SAS and G2S. Specifically and in our opinion, the underlying protocol such as serial or TCP/IP can be converted, but the conversion of EGD protocols should be avoided if possible.

In a recent meeting with GTECH, MGM technical representatives asked if GTECH had experience implementing a Hybrid Slot Floor as described above and a GTECH technical representative re-confirmed (the question was asked previously months ago) they had not. In the same meeting and after further discussion, the GTECH sales representative contradicted that confirmation and stated they had the experience but also noted the scale and volume of their deployments (which are in a distributed model) for a single establishment are significantly lower than what we anticipate to potentially use in our casino (5-10 vs. thousands).

Our understanding of G2S machines is that they only have one network port for G2S communications. According to GTECH, they will be able to use a secondary port to utilize for their proposed CMS, but we were unclear as to whether this port would run native G2S or convert from SAS to G2S. There are two reasons for concern on this question. The first reason is regarding the conversion from one EGD protocol to another and thus, whether each feed would be identical as is the case in a SAS environment. The second reason, and regardless of conversion or not, would be related to volume. We currently have only run a slot floor with roughly half (1600) of the maximum amount of slots (3200) we can potentially run in our new Springfield facility. On that deployment, which has been in operation for 5 years, we have had many issues with G2S protocol adherence and interoperability resulting in significant stability issues. Specifically, many low level protocol issues regarding timeouts and retries from as low as 32 EGD's have resulted in multiple, entire floor outages.

In our case, if a CMS were to be deployed for a full G2S floor, it will dictate that each game network (one for the operator and one for MGC) will have twice as many G2S connections and 4 times the total amount of G2S connections we have seen active on any of our slot floors to date. Based on our experience and on our current understanding of GTECH's Intelligen

certification with the GSA dated 9/19/2012 (that had defects noted as non-compliant), we are concerned that the supposed passive CMS system may cause EGD instability or interoperability between games.

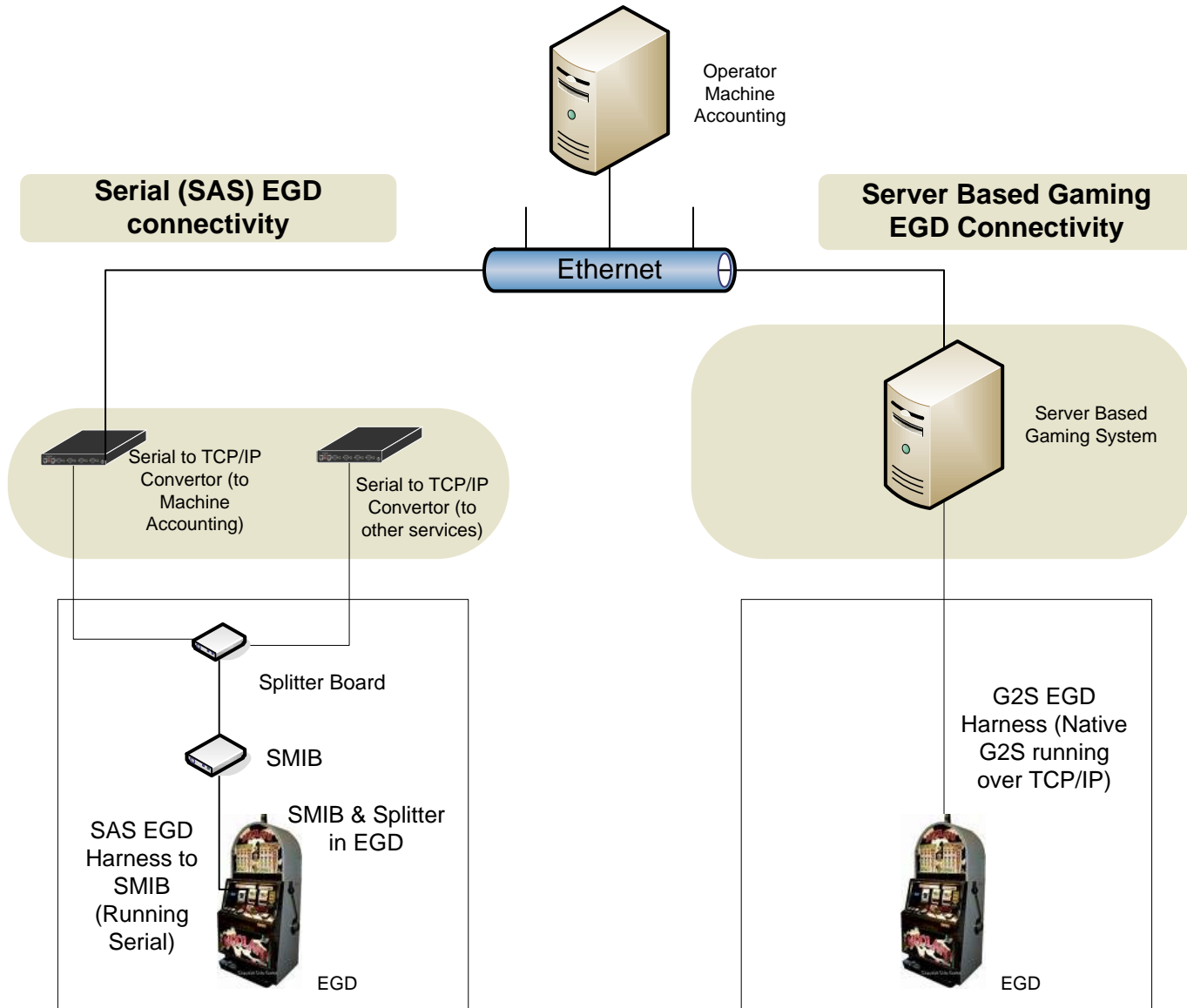
For these reasons, we ask that at a minimum SAS based gamed be allowed on all Massachusetts facilities and we strongly urge the commission to consider our technical concerns when making a final decision on utilizing a CMS.

RFR Reference:

5.2.4 CMS REQUIREMENTS

12. The functions of the CMS shall not be obtrusive for the players, for employees who require real-time monitoring of security events, financial transactions, or service of the EGDs. Performance of the CMS shall not degrade noticeably during normal functionality. In addition, the CMS shall provide capacity to accommodate EGD populations, play volumes, and event recording consistent with all specifications.

MA Operator Planned Hybrid Floor

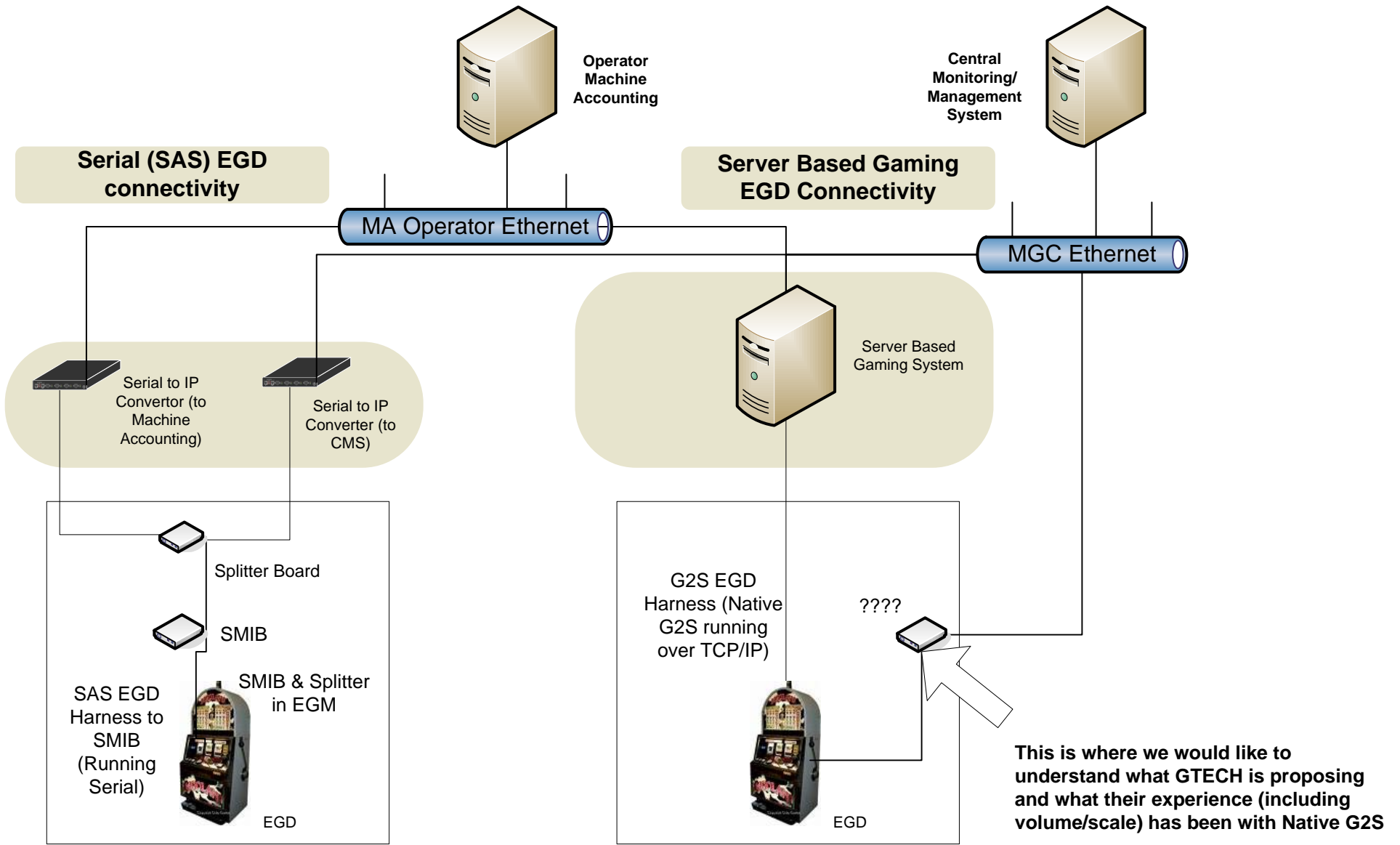


Definitions

EGD – Electronic Gaming Device
 G2S – Game to System Protocol
 SAS – Slot Accounting System Protocol
 SMIB – Slot Machine Interface Board
 TCP/IP - Transmission Control Protocol/
 Internet Protocol

Proprietary and Confidential.

GTECH's Hybrid Floor



Definitions

- EGD – Electronic Gaming Device
- G2S – Game to System Protocol
- SAS – Slot Accounting System Protocol
- SMIB – Slot Machine Interface Board
- TCP/IP - Transmission Control Protocol/ Internet Protocol

Proprietary and Confidential.

The Gaming Standards Association

awards this

Certificate of Compliance

to

Spielo International

for

Product: Spielo Intelligen System; DGM v2.2, ILink v2.2

MPI: Spielo Intelligen System; DGM v2.2, ILink v2.2

The above product was GSA Certified on September 20, 2012, found compliant with GSA standard G2S Message Protocol v1.1 as detailed in the attached Certificate Record.



Certification Authority



Certificate No: **GSACT20120920001**

GSA Product Certification Record

Manufacturer	Spielo International
Product Name	Spielo Intelligen System; DGM v2.2, ILink v2.2
Product MPI	Spielo Intelligen System; DGM v2.2, ILink v2.2
Certification Basis	<input checked="" type="checkbox"/> Conformance Testing <input type="checkbox"/> Self-Determination
Testing Laboratory	Gaming Laboratories International, LLC
Testing Completed	09/19/2012
GSA Standard	G2S Message Protocol v1.1
Product Status	<input checked="" type="checkbox"/> Certified <input type="checkbox"/> Not Certified
Effective Date	09/19/2012
Verified Faults	None

The product identified above has been certified as compliant with the GSA Standard listed above to the extent indicated for each functional group listed below. Some functional groups may be fully compliant. Other functional groups may not be fully compliant and may contain defects or restrictions. Any such defects or restrictions are listed with those functional groups. Some functional groups may not have been tested at all. For the most current information on this product certification, go to the GSA Certified Product Registry on the GSA web site and search for this record using the product MPI shown above.

Functional Group	Compliant	Not Compliant	Not Tested
Central Server (DGM v2.2.10.0) – g2sMessage Class Defects: 1) When the EGM sends a response to the Central Server (sessionType="G2S_response") with a commandId that is less than the previous, the Central Server responds to the command with G2S_MSX999 instead of G2S_MSX007 (Commands Not In commandId Order). 2) When the EGM sends an expired message to the Central Server (timeToLive has passed), the Central Server still processes the command instead of sending G2S_APX011 (Time-to-live Expired).		X	
Central Server (DGM v2.2.10.0) – communications Class – Core Communications Functionality – Owner - setCommsState	X		

Functional Group	Compliant	Not Compliant	Not Tested
Central Server (DGM v2.2.10.0) – communications Class – Core Communications Functionality – Owner – getCommsProfile	X		
Central Server (DGM v2.2.10.0) – communications Class – Core Communications Functionality – Owner – getDescriptor	X		
Central Server (DGM v2.2.10.0) – communications Class – Core Communications Functionality – Owner – setKeepAlive	X		
Central Server (DGM v2.2.10.0) – communications Class – Core Communications Functionality – Owner – EGM-Initiated Communications	X		
Central Server (DGM v2.2.10.0) – cabinet Class – Core Cabinet Functionality – Owner – setCabinetState	X		
Central Server (DGM v2.2.10.0) – cabinet Class – Core Cabinet Functionality – Owner – getCabinetStatus	X		
Central Server (DGM v2.2.10.0) – cabinet Class – Core Cabinet Functionality – Owner – getCabinetProfile	X		
Central Server (DGM v2.2.10.0) – cabinet Class – Core Cabinet Functionality – Owner – setDateTime	X		
Central Server (DGM v2.2.10.0) – eventHandler Class – Core Event Reporting Functionality – Owner – setEventHandlerState	X		
Central Server (DGM v2.2.10.0) – eventHandler Class – Core Event Reporting Functionality – Owner – getEventHandlerStatus	X		
Central Server (DGM v2.2.10.0) – eventHandler Class – Core Event Reporting Functionality – Owner – setEventSub	X		
Central Server (DGM v2.2.10.0) – eventHandler Class – Core Event Reporting Functionality – Owner – getEventSub	X		
Central Server (DGM v2.2.10.0) – eventHandler Class – Core Event Reporting Functionality – Owner – clearEventSub	X		
Central Server (DGM v2.2.10.0) – eventHandler Class – Core Event Reporting Functionality – Owner – EGM-Initiated Events	X		
Central Server (DGM v2.2.10.0) – gamePlay Class – Core Game Play Functionality – Owner – setGamePlayState	X		
Central Server (DGM v2.2.10.0) – gamePlay Class – Core Game Play Functionality – Owner – getGamePlayStatus	X		
Central Server (DGM v2.2.10.0) – gamePlay Class – Core Game Play Functionality – Owner – setActiveDenoms	X		
Central Server (DGM v2.2.10.0) – gamePlay Class – Core Game Play Functionality – Owner – getGameDenoms	X		

Functional Group	Compliant	Not Compliant	Not Tested
Central Server (DGM v2.2.10.0) – commConfig Class – Core Communications Configuration Functionality – Owner – enterCommConfigMode	X		
Central Server (DGM v2.2.10.0) – commConfig Class – Core Communications Configuration Functionality – Owner – getCommConfigModeStatus	X		
Central Server (DGM v2.2.10.0) – commConfig Class – Core Communications Configuration Functionality – Owner – getCommConfigProfile	X		
Central Server (DGM v2.2.10.0) – commConfig Class – Core Communications Configuration Functionality – Owner – getCommHostList	X		
Central Server (DGM v2.2.10.0) – commConfig Class – Core Communications Configuration Functionality – Owner – setCommChange Comment: 1) Ownership of the handpay device cannot be configured remotely. When an EGM first comes online the G2S_handpay device is reported in the commHost list. The Central Server then sends setCommChange indicating which devices each host owns, is a guest of, or is the configurator of. The G2S_handpay device is not included in the setCommChange command. This means that the Central Server does not set the Site Controller to be the owner of the handpay device.	X		
Central Server (DGM v2.2.10.0) – commConfig Class – Core Communications Configuration Functionality – Owner – EGM-Initiated Comms Configurations	X		
Central Server (DGM v2.2.10.0) – optionConfig Class – Core Option Configuration Functionality – Owner – enterOptionConfigMode	X		
Central Server (DGM v2.2.10.0) – optionConfig Class – Core Option Configuration Functionality – Owner – getOptionConfigModeStatus	X		
Central Server (DGM v2.2.10.0) – optionConfig Class – Core Option Configuration Functionality – Owner – getOptionList	X		
Central Server (DGM v2.2.10.0) – optionConfig Class – Core Option Configuration Functionality – Owner – setOptionChange	X		
Central Server (DGM v2.2.10.0) – optionConfig Class – Core Option Configuration Functionality – Owner – EGM-Initiated Option Configuration	X		

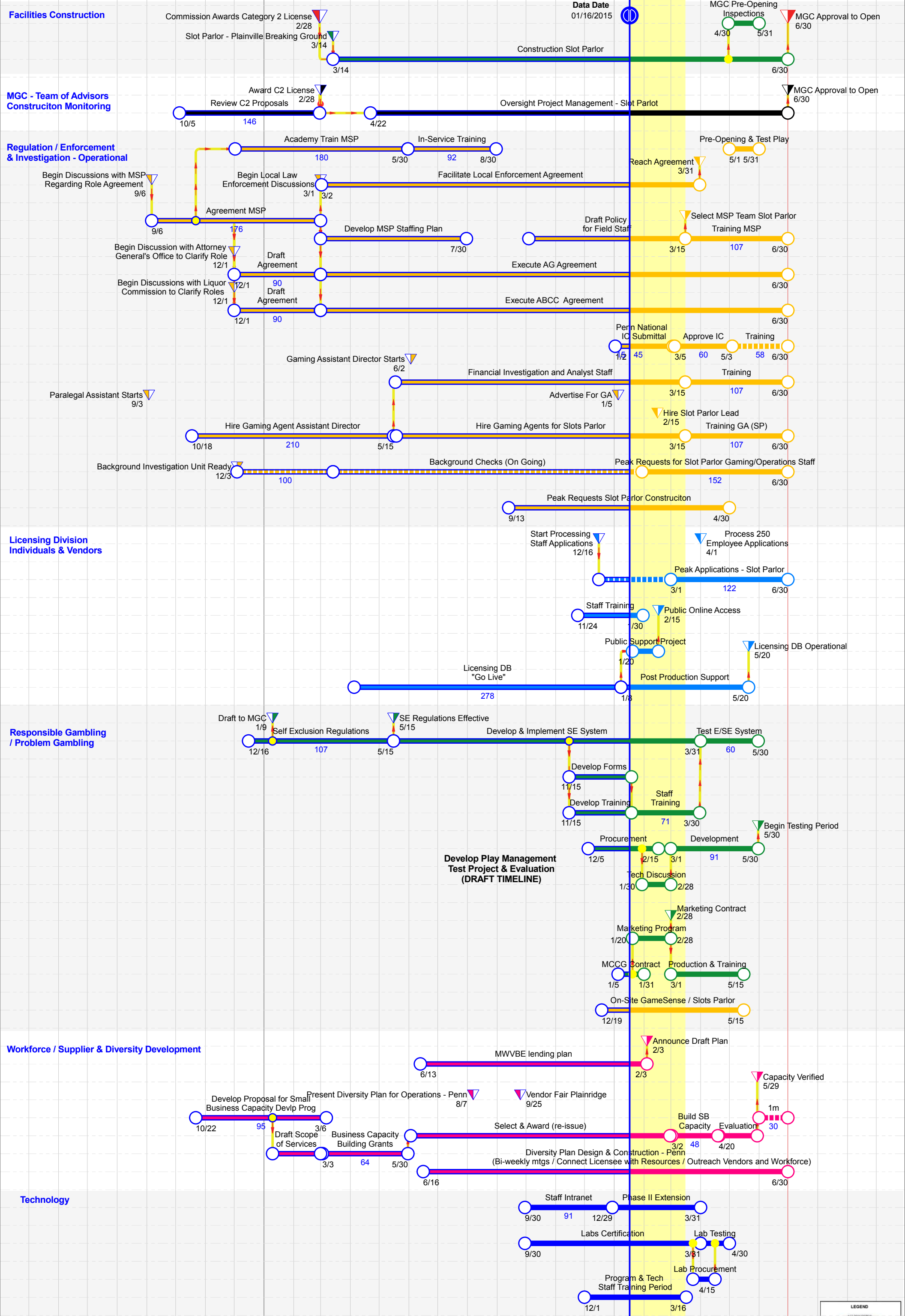
Functional Group	Compliant	Not Compliant	Not Tested
Central Server (DGM v2.2.10.0) – download Class – Core Software Download Functionality – Owner – setDownloadState	X		
Central Server (DGM v2.2.10.0) – download Class – Core Software Download Functionality – Owner – getDownloadStatus	X		
Central Server (DGM v2.2.10.0) – download Class – Core Software Download Functionality – Owner – getDownloadProfile	X		
Central Server (DGM v2.2.10.0) – download Class – Core Software Download Functionality – Owner – deletePackage	X		
Central Server (DGM v2.2.10.0) – download Class – Core Software Download Functionality – Owner – addPackage	X		
Central Server (DGM v2.2.10.0) – download Class – Core Software Download Functionality – Owner – getPackageList	X		
Central Server (DGM v2.2.10.0) – download Class – Core Software Download Functionality – Owner – setScript	X		
Central Server (DGM v2.2.10.0) – download Class – Core Software Download Functionality – Owner – getScriptStatus	X		
Central Server (DGM v2.2.10.0) – download Class – Core Software Download Functionality – Owner – getModuleList	X		
Central Server (DGM v2.2.10.0) – download Class – Core Software Download Functionality – Owner – EGM-Initiated Download	X		
Central Server (DGM v2.2.10.0) – gat Class – Core Game Authentication Functionality – Guest – getGatProfile	X		
Central Server (DGM v2.2.10.0) – gat Class – Core Game Authentication Functionality – Guest – getComponentList	X		
Central Server (DGM v2.2.10.0) – gat Class – Core Game Authentication Functionality – Guest – getSpecialFunctions	X		
Site Controller (ILink v2.2.6.1) – g2sMessage Class	X		
Site Controller (ILink v2.2.6.1) – communications Class – Core Communications Functionality – Owner – setCommsState	X		
Site Controller (ILink v2.2.6.1) – communications Class – Core Communications Functionality – Owner – getCommsStatus	X		
Site Controller (ILink v2.2.6.1) – communications Class – Core Communications Functionality – Owner – getDescriptor	X		
Site Controller (ILink v2.2.6.1) – communications Class – Core Communications Functionality – Owner – setKeepAlive	X		

Functional Group	Compliant	Not Compliant	Not Tested
Site Controller (ILink v2.2.6.1) – communications Class – Core Communications Functionality – Owner – EGM-Initiated Communications	X		
Site Controller (ILink v2.2.6.1) – cabinet Class – Core Cabinet Functionality – Owner – setCabinetState	X		
Site Controller (ILink v2.2.6.1) – cabinet Class – Core Cabinet Functionality – Owner – getCabinetStatus	X		
Site Controller (ILink v2.2.6.1) – cabinet Class – Core Cabinet Functionality – Owner – setDateTime	X		
Site Controller (ILink v2.2.6.1) – cabinet Class – Core Cabinet Functionality – Owner – getDateTime	X		
Site Controller (ILink v2.2.6.1) – cabinet Class – Operating Hours Support (Extension 1d) – Owner – setOperatingHours	X		
Site Controller (ILink v2.2.6.1) – cabinet Class – Operating Hours Support (Extension 1d) – Owner – getOperatingHours	X		
Site Controller (ILink v2.2.6.1) – eventHandler Class – Core Event Reporting Functionality – Owner – setEventHandlerState	X		
Site Controller (ILink v2.2.6.1) – eventHandler Class – Core Event Reporting Functionality – Owner – getSupportedEvents	X		
Site Controller (ILink v2.2.6.1) – eventHandler Class – Core Event Reporting Functionality – Owner – setEventSub	X		
Site Controller (ILink v2.2.6.1) – eventHandler Class – Core Event Reporting Functionality – Owner – getEventSub	X		
Site Controller (ILink v2.2.6.1) – eventHandler Class – Core Event Reporting Functionality – Owner – clearEventSub	X		
Site Controller (ILink v2.2.6.1) – eventHandler Class – Core Event Reporting Functionality – Owner – EGM-Initiated Events	X		
Site Controller (ILink v2.2.6.1) – meters Class – Core Meter Reporting Functionality – Owner – getMeterInfo	X		
Site Controller (ILink v2.2.6.1) – meters Class – Core Meter Reporting Functionality – Owner – setMeterSub	X		
Site Controller (ILink v2.2.6.1) – meters Class – Core Meter Reporting Functionality – Owner – clearMeterSub	X		
Site Controller (ILink v2.2.6.1) – meters Class – Core Meter Reporting Functionality – Owner – getMeterSub	X		
Site Controller (ILink v2.2.6.1) – meters Class – Core Meter Reporting Functionality – Owner – EGM-Initiated Meters	X		
Site Controller (ILink v2.2.6.1) – gamePlay Class – Core Game Play Functionality – Guest – getGamePlayStatus	X		

Functional Group	Compliant	Not Compliant	Not Tested
Site Controller (ILink v2.2.6.1) – optionConfig Class – Core Option Configuration Functionality – Guest – getOptionList	X		
Site Controller (ILink v2.2.6.1) – handpay Class – Core Handpay Functionality – Owner – setHandpayState	X		
Site Controller (ILink v2.2.6.1) – handpay Class – Core Handpay Functionality – Owner – EGM-Initiated Handpay	X		
Site Controller (ILink v2.2.6.1) – coinAcceptor Class – Core Coin Acceptor Functionality – Owner – setCoinAcceptorState	X		
Site Controller (ILink v2.2.6.1) – noteAcceptor Class – Core Note Acceptor Functionality – Owner – setNoteAcceptorState	X		
Site Controller (ILink v2.2.6.1) – printer Class – Core Printer Functionality – Owner – setPrinterState	X		
Site Controller (ILink v2.2.6.1) – printer Class – Core Printer Functionality – Owner – getPrinterStatus	X		
Site Controller (ILink v2.2.6.1) – voucher Class – Issue Voucher Support – Owner – EGM-Initiated Issue Voucher	X		
Site Controller (ILink v2.2.6.1) – voucher Class – Redeem Voucher Support – Owner – EGM-Initiated Redeem Voucher Comment: 1) If an expired voucher (issueVoucher.expireCredits="true") with non-cashable credits is inserted into an EGM the host authorizes the voucher and the credits are added to the EGMs credit meter. The voucher should be rejected and the authorizeVoucher command sent by the ILink should have hostAction="G2S_reject" and hostException="3" (Voucher expired).	X		
Site Controller (ILink v2.2.6.1) – gat Class – Core Game Authentication Functionality – Owner – getComponentList	X		
Site Controller (ILink v2.2.6.1) – gat Class – Core Game Authentication Functionality – Owner – doVerification	X		
Site Controller (ILink v2.2.6.1) – gat Class – Core Game Authentication Functionality – Owner – EGM-Initiated GAT	X		

MGC 2015-01-16 Schedule Update / Slot Parlor Activities

Data Date
01/16/2015



LEGEND

- Start Date
- End Date
- Subactivity
- Start Date
- End Date

General Admin

Regulations

Responsible Gaming (Comm. Zuniga & Crosby)

Internal Controls (Comm. Zuniga)

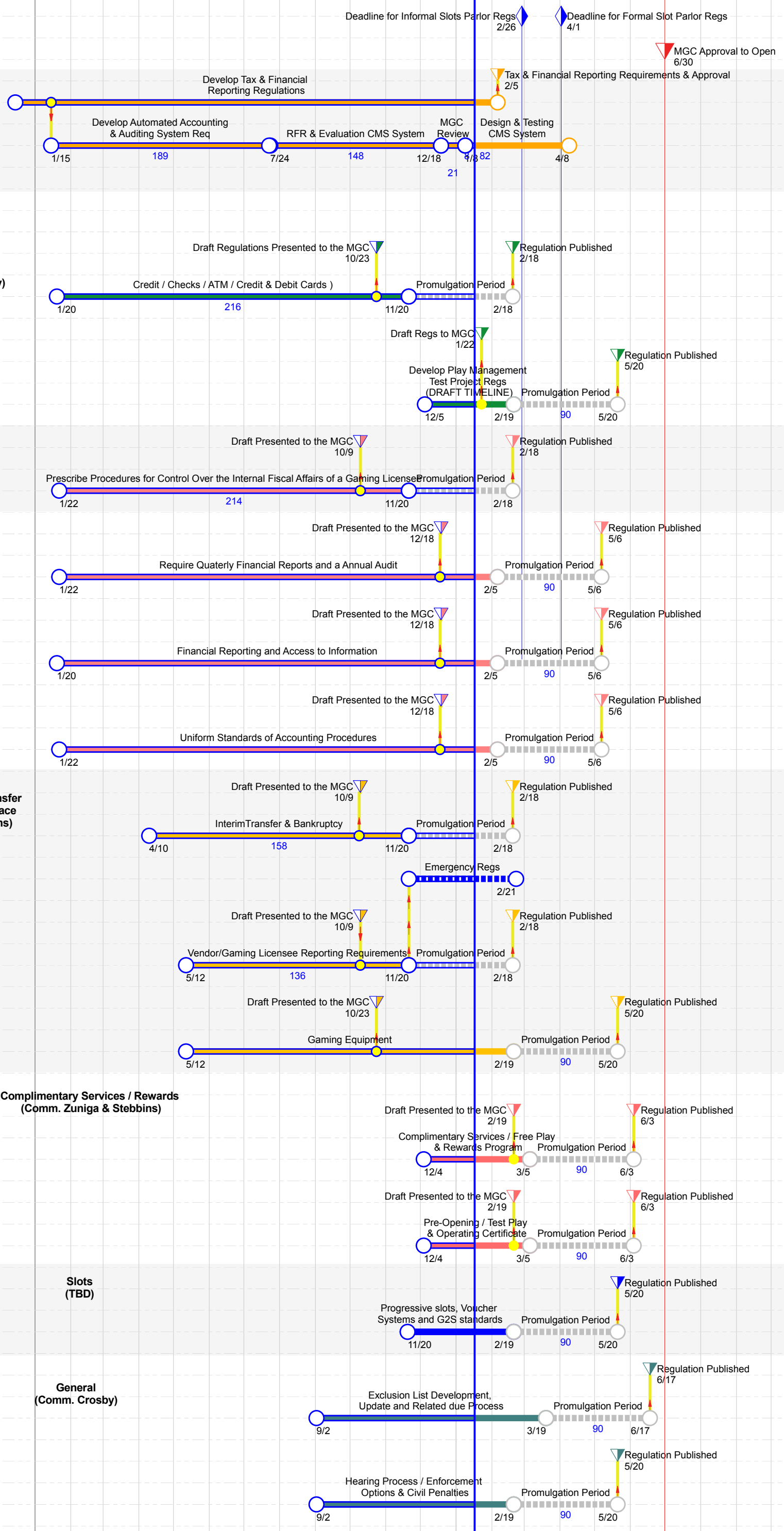
Financial Reporting (Comm. Zuniga)

Licensing / Reporting / Transfer & Bankruptcy / On-site Space (Comm. Crosby & Stebbins)

Complimentary Services / Rewards (Comm. Zuniga & Stebbins)

Slots (TBD)

General (Comm. Crosby)



LEGEND

- ACT DESCRIPTION
- Start Date
- End Date
- SUMMARY ACTIVITY
- Start Date
- End Date